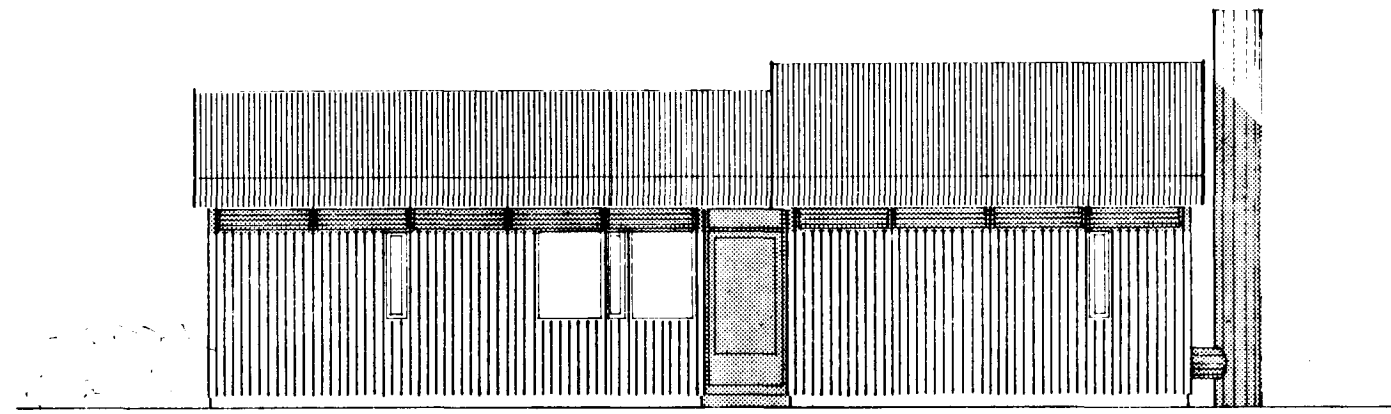
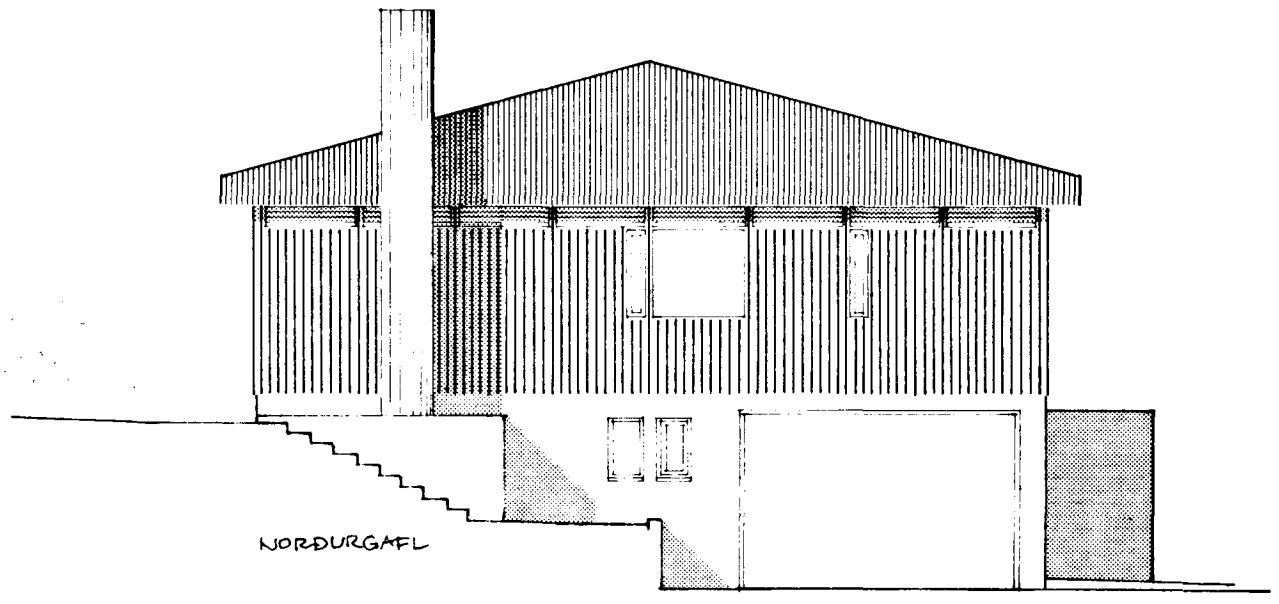


*H. Hafþórsson*

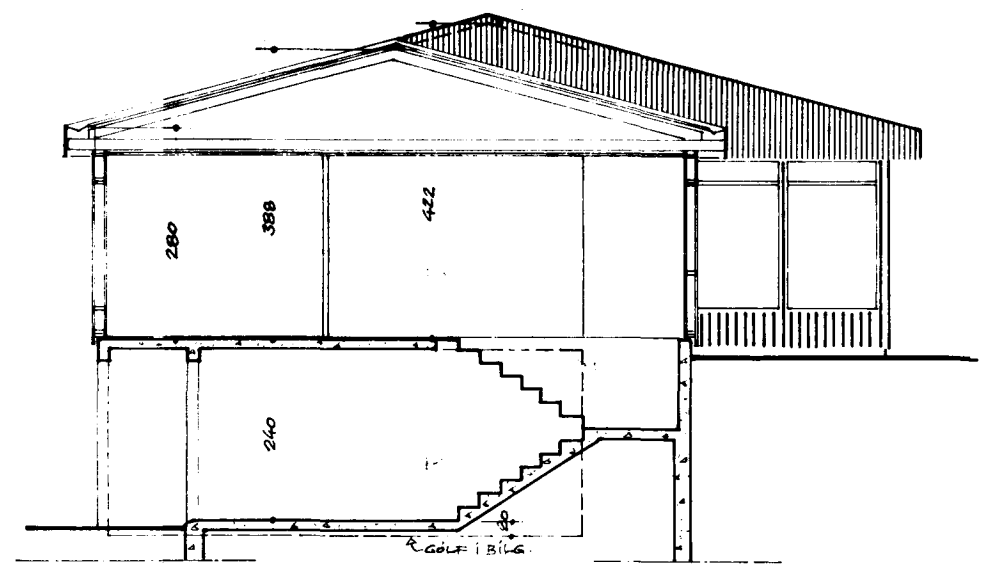
Ganga skal frá opnu  
eðstæði í samráði við  
slökkviliðsliðjóra



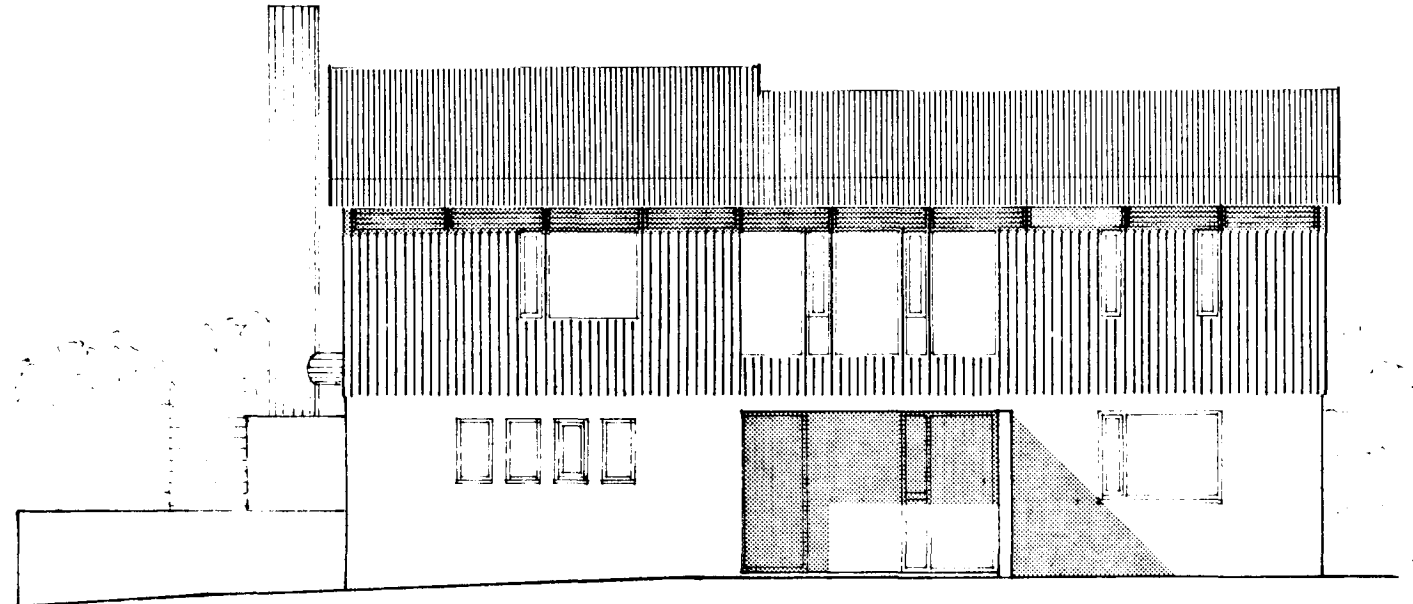
AUSTURHLÍÐ



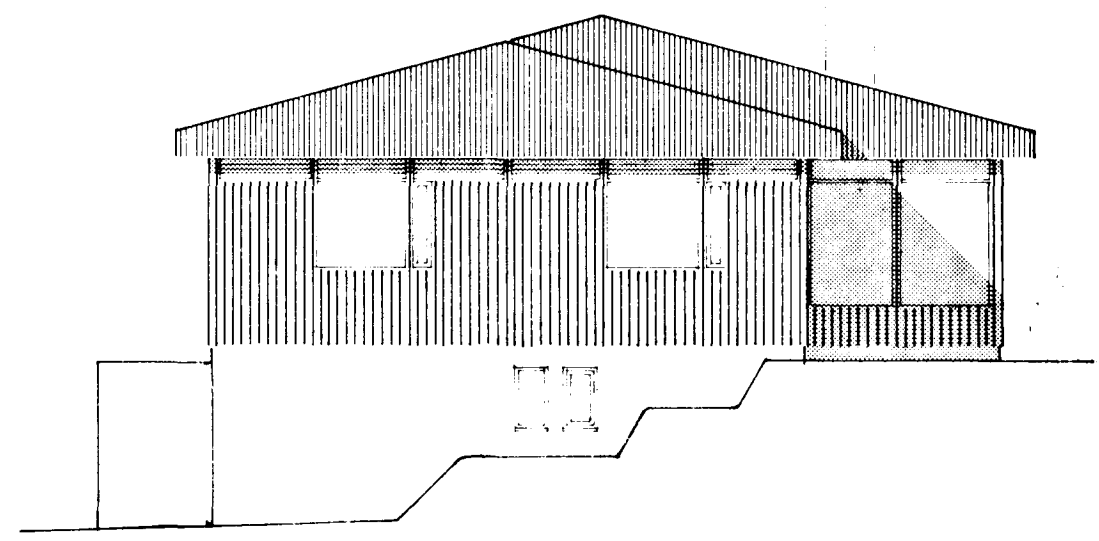
NORÐURGAFL



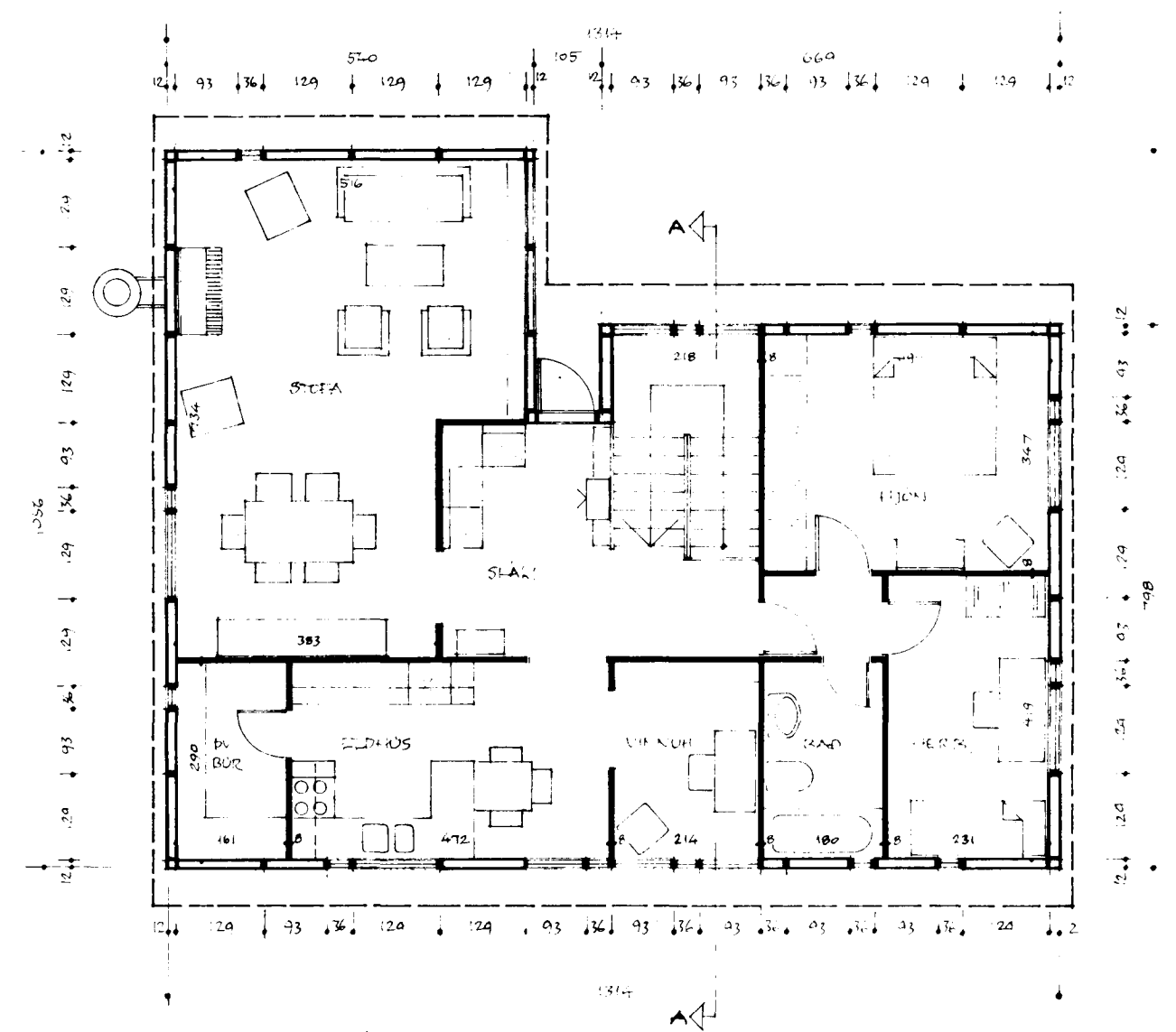
SKURÐUR A-A



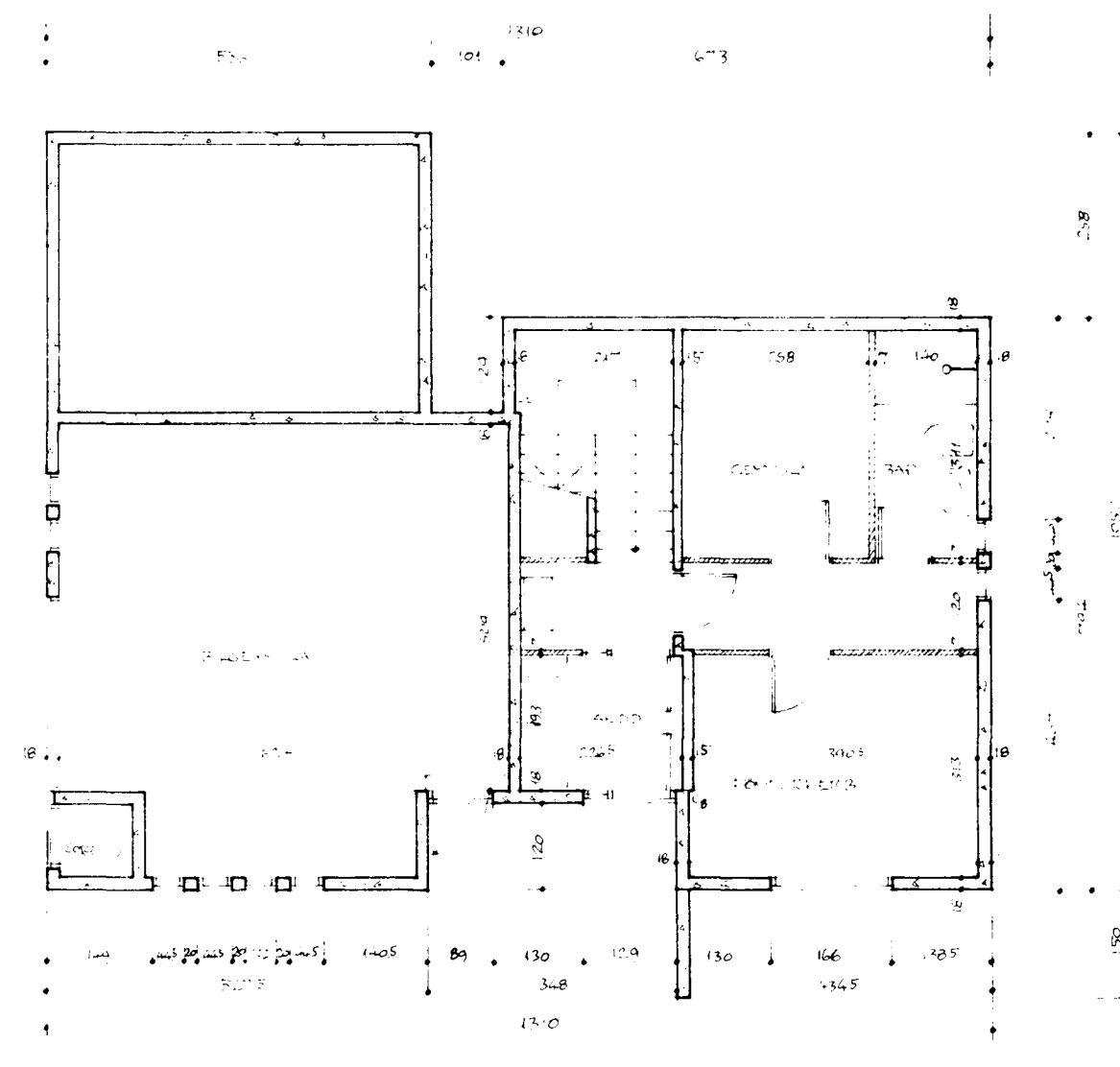
VESTURHLÍÐ



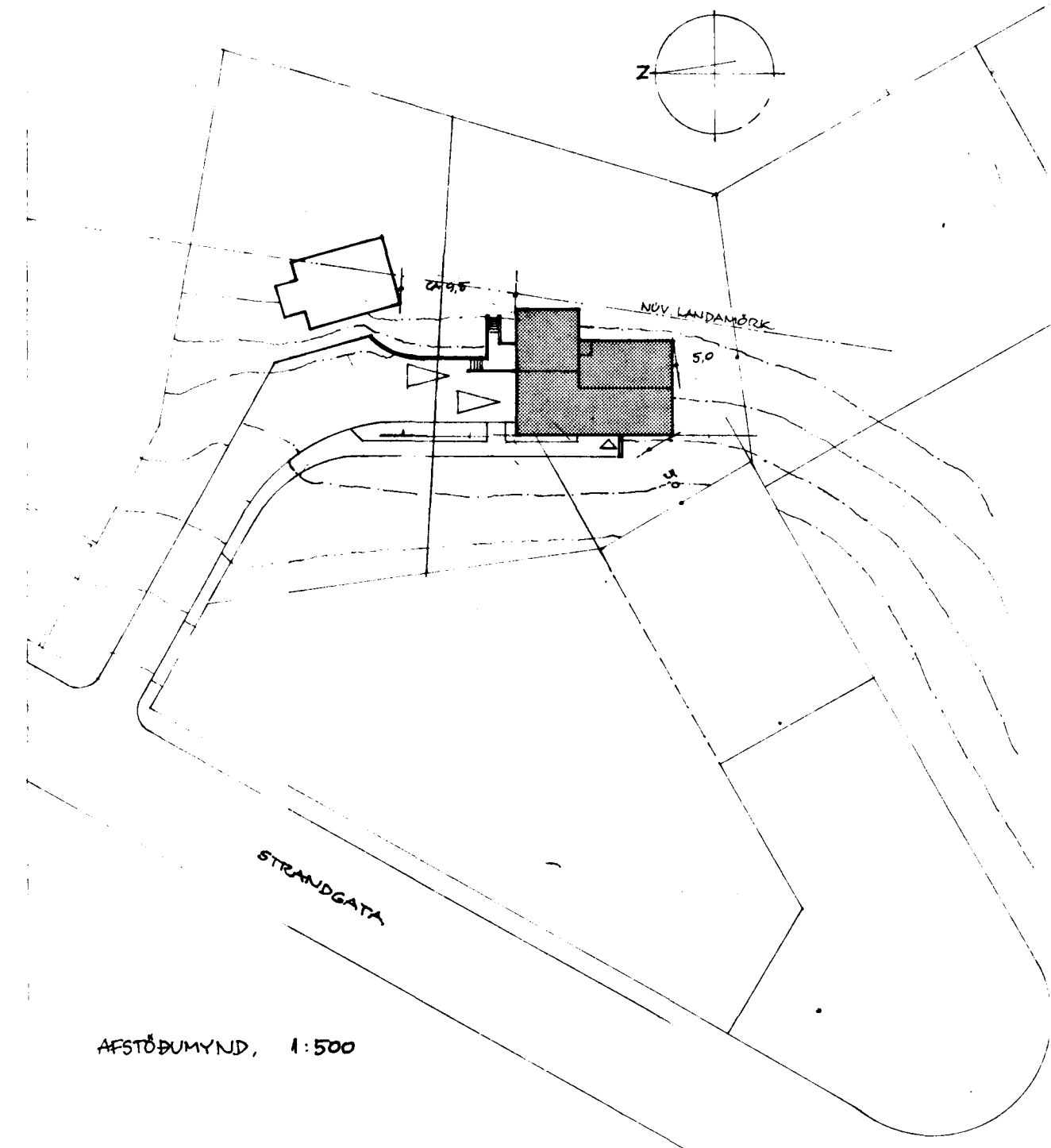
SÚÐURGAFL



GRUNNMYND IBÚÐARHÉÐAR 1:100



GRUNNMYND KJALLARA (INNGANGSHÉÐAR) 1:100



AFSTÖÐUMYND 1:500

	FLATARMÁL (BRÚTT)	RÚMMÁL (BRÚTT)
IBÚÐARHÉÐ	117,4 m <sup>2</sup>	410 m <sup>3</sup>
KJALLARI (MEÐ BÍLG)	91,6 -	229 -
	209,0 m <sup>2</sup>	639 m <sup>3</sup>

HÚS ÚR TIMBURREININGUM FRÁ HUSEININGUM HF, SIGLUFIRDI  
(STEINSTEYPTUR KJALLARI)  
A HELLULÖÐ (VIÐ STRANDGÖTU) - HAFNARFIRDI  
HÚS SEIRS GÍSLASONAR

GRUNNMYNDIR,  
ÚTLIT, SKURÐUR - MÆLIKV. 1:100  
AFSTÖÐUMYND - - 1:500

REYKJAVÍK Í AGÚST 1977  
HELGI HAFÞÓRSSON, ARKITEKT F.A.  
SKIPHOLTI 1 - Sími 221 49  
*Helgi Hafþórsson*