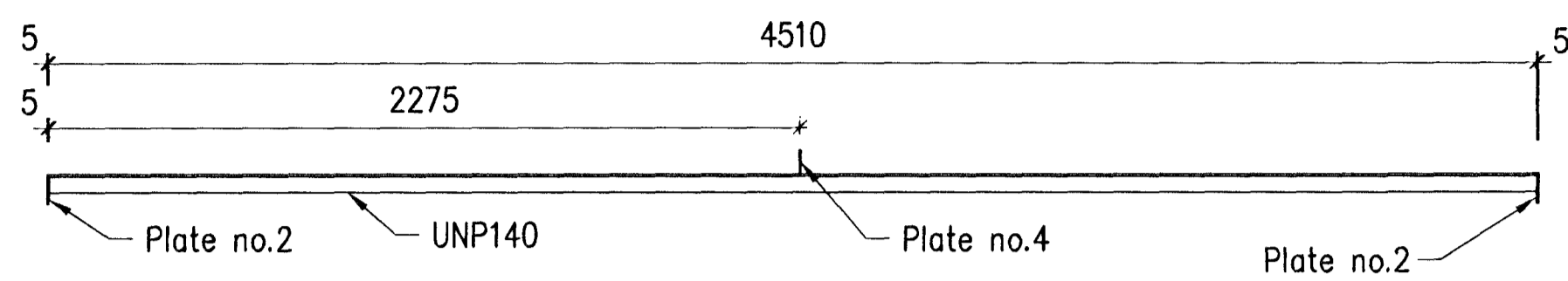
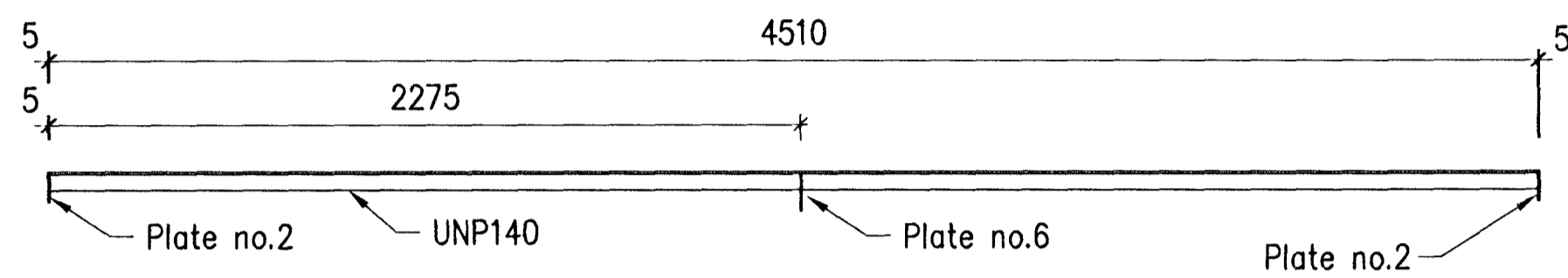


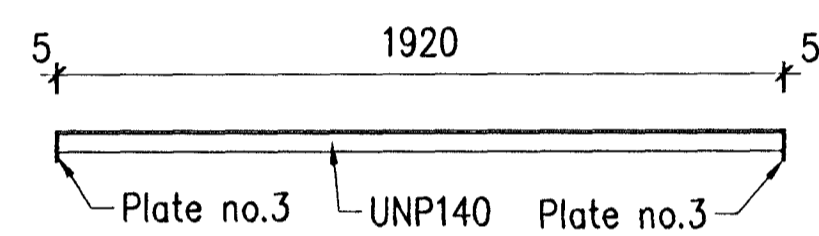
BEAM no.3, 1:20, 8 pcs



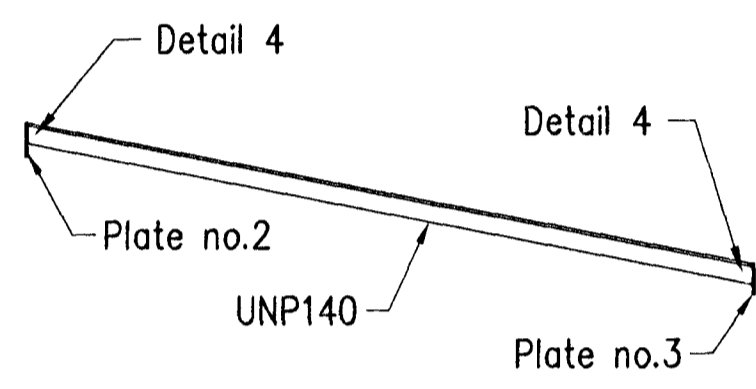
BEAM no.3a, 1:20, 2 pcs



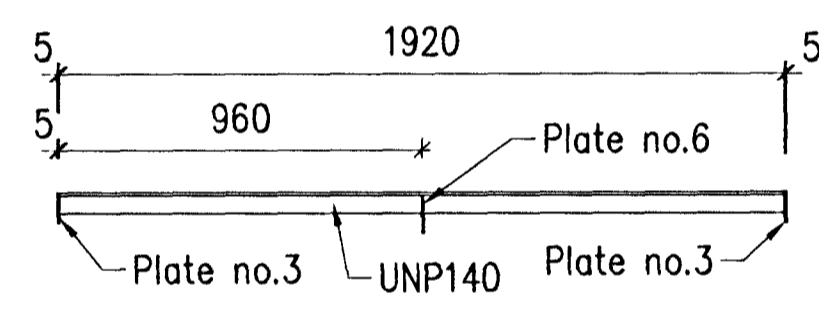
BEAM no.3b, 1:20, 2 pcs



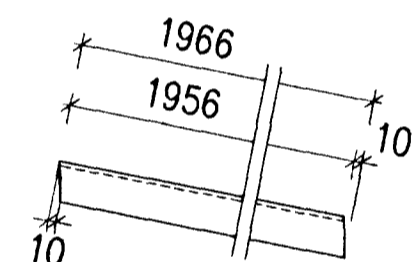
BEAM no.4, 1:20, 8 pcs



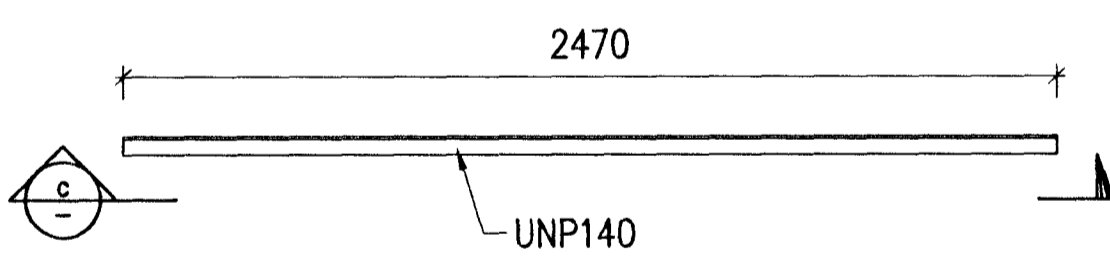
BEAM no.5, 1:20, 2 pcs



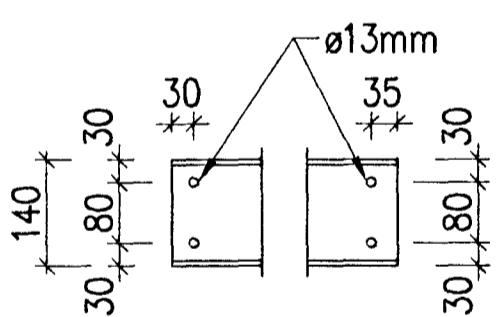
BEAM no.4b, 1:20, 2 pcs



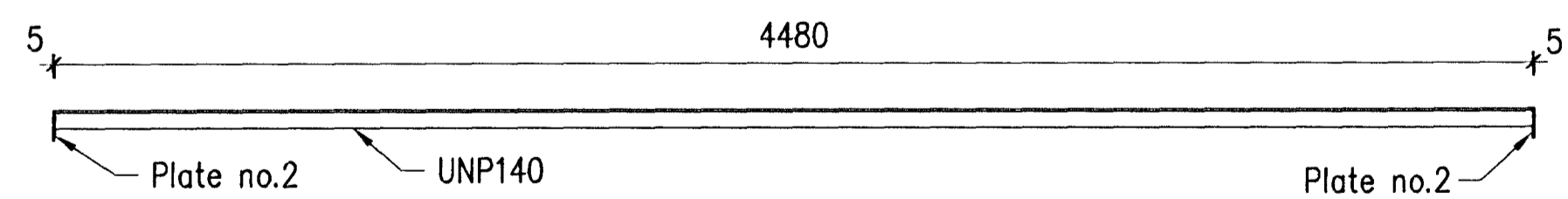
4 DETAIL, 1:10



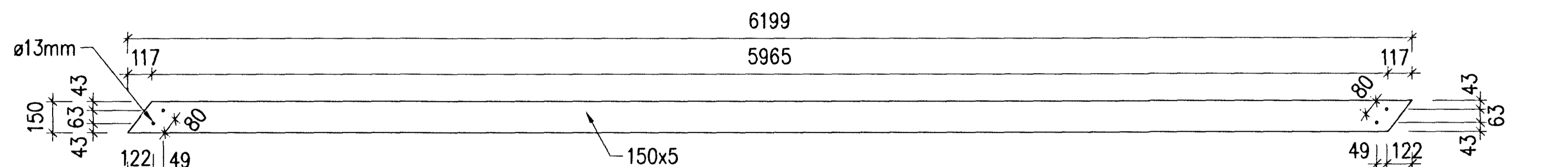
BEAM no.6, 1:20, 2 pcs



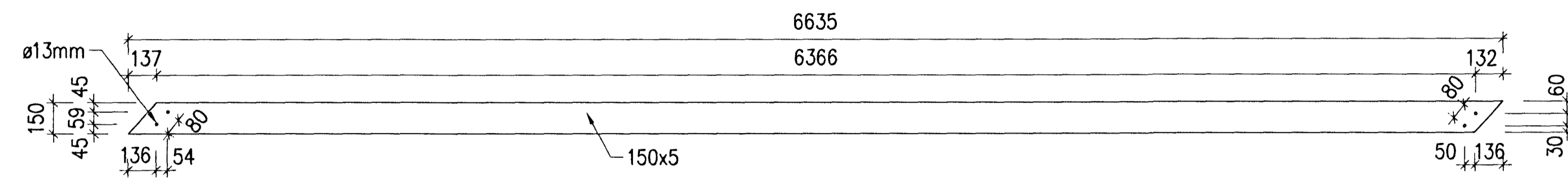
c SECTION, 1:10



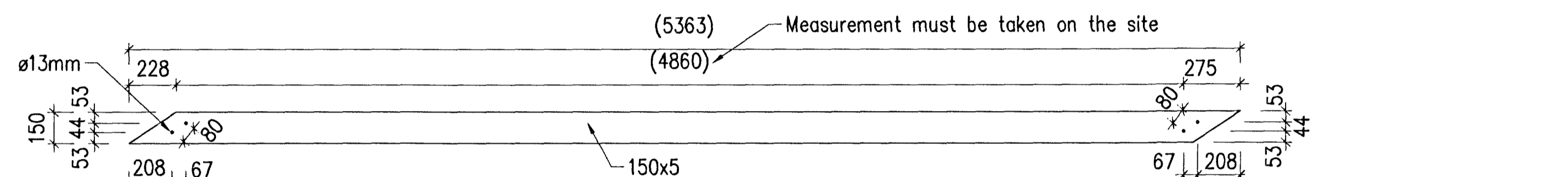
BEAM no.7, 1:20, 1 pc



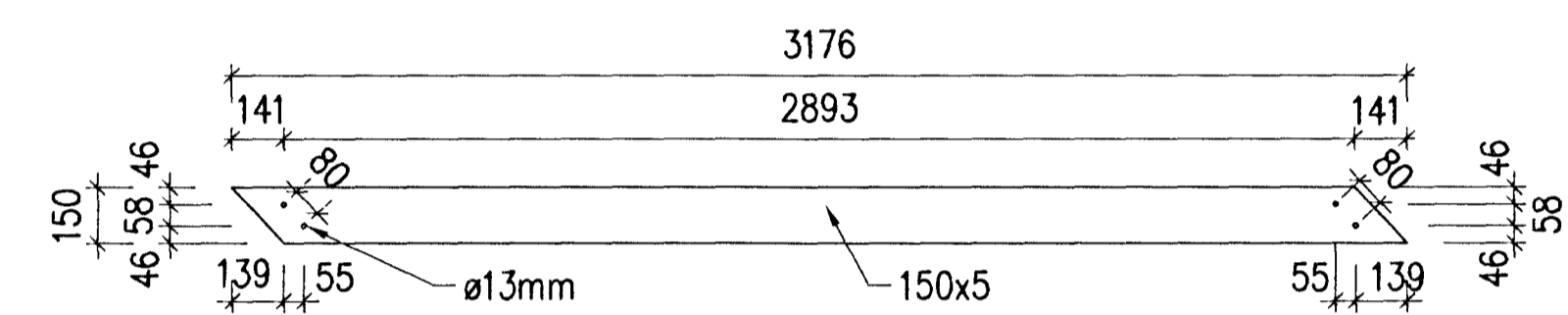
FLAT BAR no.101, 1:20, 4 pcs



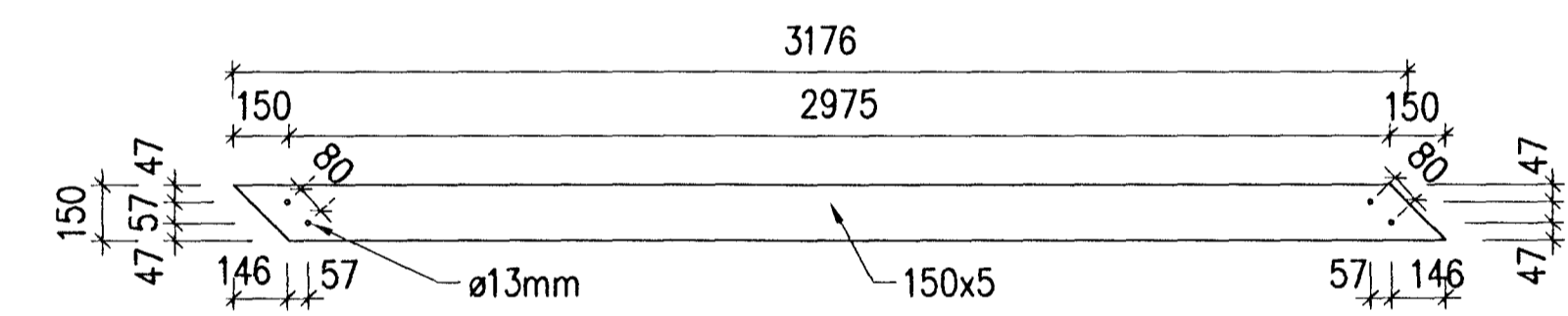
FLAT BAR no.102, 1:20, 2 pcs



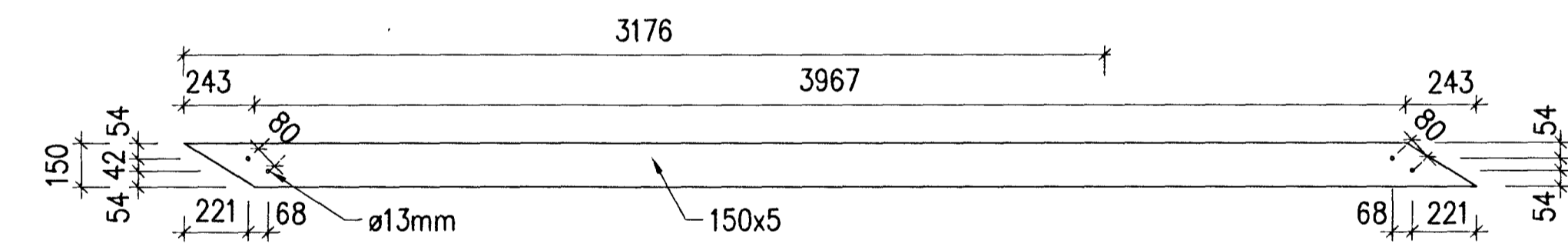
FLAT BAR no.103, 1:20, 2 pcs



FLAT BAR no.104, 1:20, 2 pcs



FLAT BAR no.105, 1:20, 2 pcs



FLAT BAR no.106, 1:20, 2 pcs

Samþykkt þann
20 JAN 2011
Byggingatvönnir í Húfnarfríði
F.n. Hrólfur S. Gunnlaugsson

Nich Indúsaio.
157



Skýringar:
Explanations:
Details, see also drawing no. 266.
All steel material shall be corrosion protected, class C5-M according to (ST EN ISO12944-2:1998



This drawing is the property of the Rio Tinto Alcan Iceland Ltd and handed out for personal use only. It may neither be copied nor made available to others without permission of the Rio Tinto Alcan Iceland Ltd. The receiver is liable for any misuse.

Fjöldi stykkja Number of pieces		Hlutur Object	Atriði Item	Efni Material	eo.stk Weight	totali heild kg Byrgd	Athugasemdir Remarks
IV	II	ICC					Stærð Formul A1 Mkv. Scale 1:20
		CASTHOUSE EXTENSION BUILDINGS, STEP 1					Kostn.nr.-búnr. / Óbno.-Eq.no.
		BUILDING 2					AKS no.
		VENTILATION, INTAKE, DETAIL					Tekn. vertika / Dröno. of suppl./Brot./Rev
		HRV					ICC-611-ZA-518-267 C
		AgS 2010.05.28	Yfirfarið Checked	NI			Samþykkt Approved
		10.11.24	Dags Date	Kgp			Samþykkt Approved
		4	Issued for construction				Dröno. of ISAL / Tekn. ISAL
			Breyting Revision				Notkun heimil Released
			Táv. teikningar nr. ISAL Ref. drawing no. of ISAL				Samsetn. teikningar nr. ISAL Assembly drawing no. of ISAL