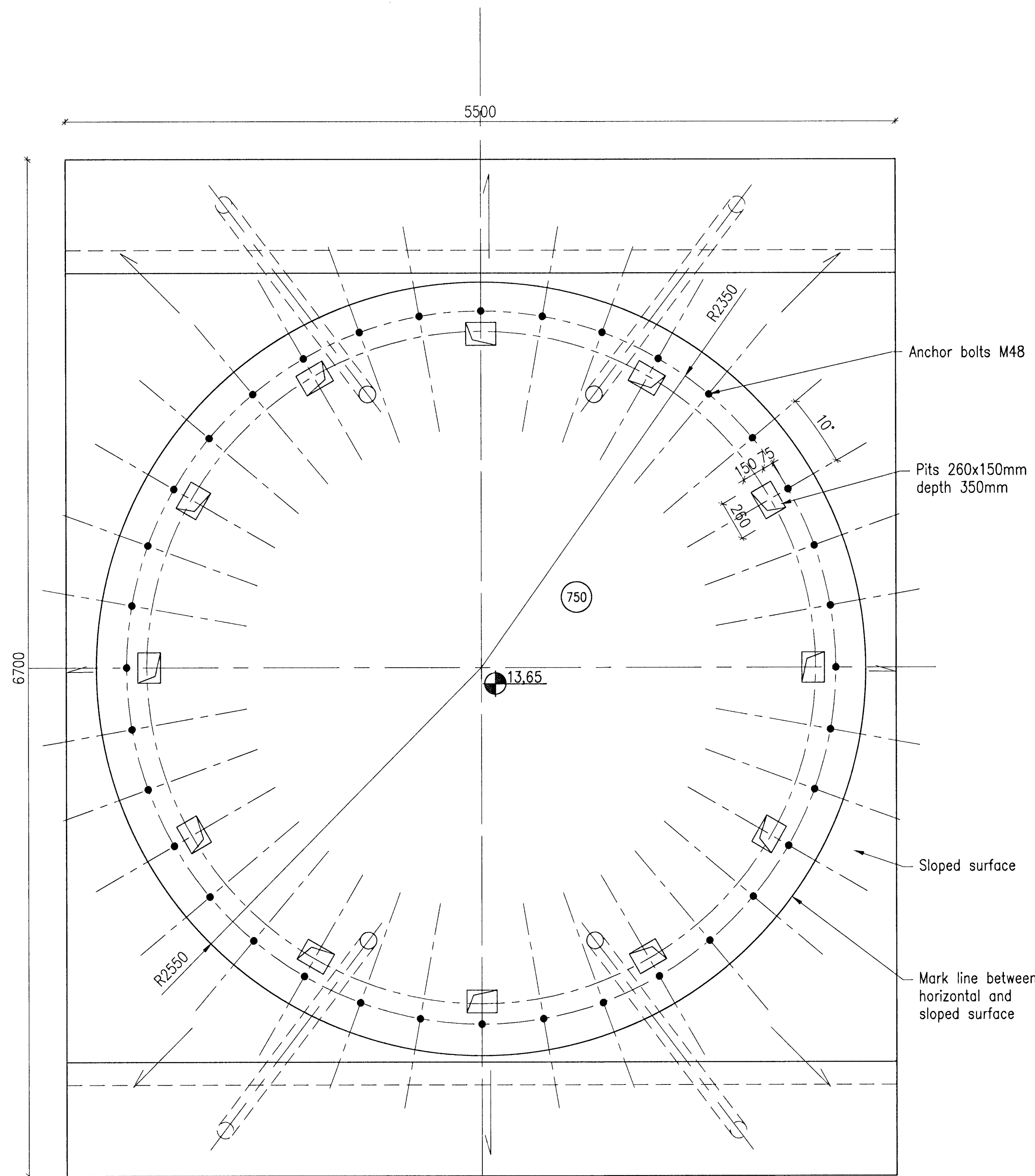
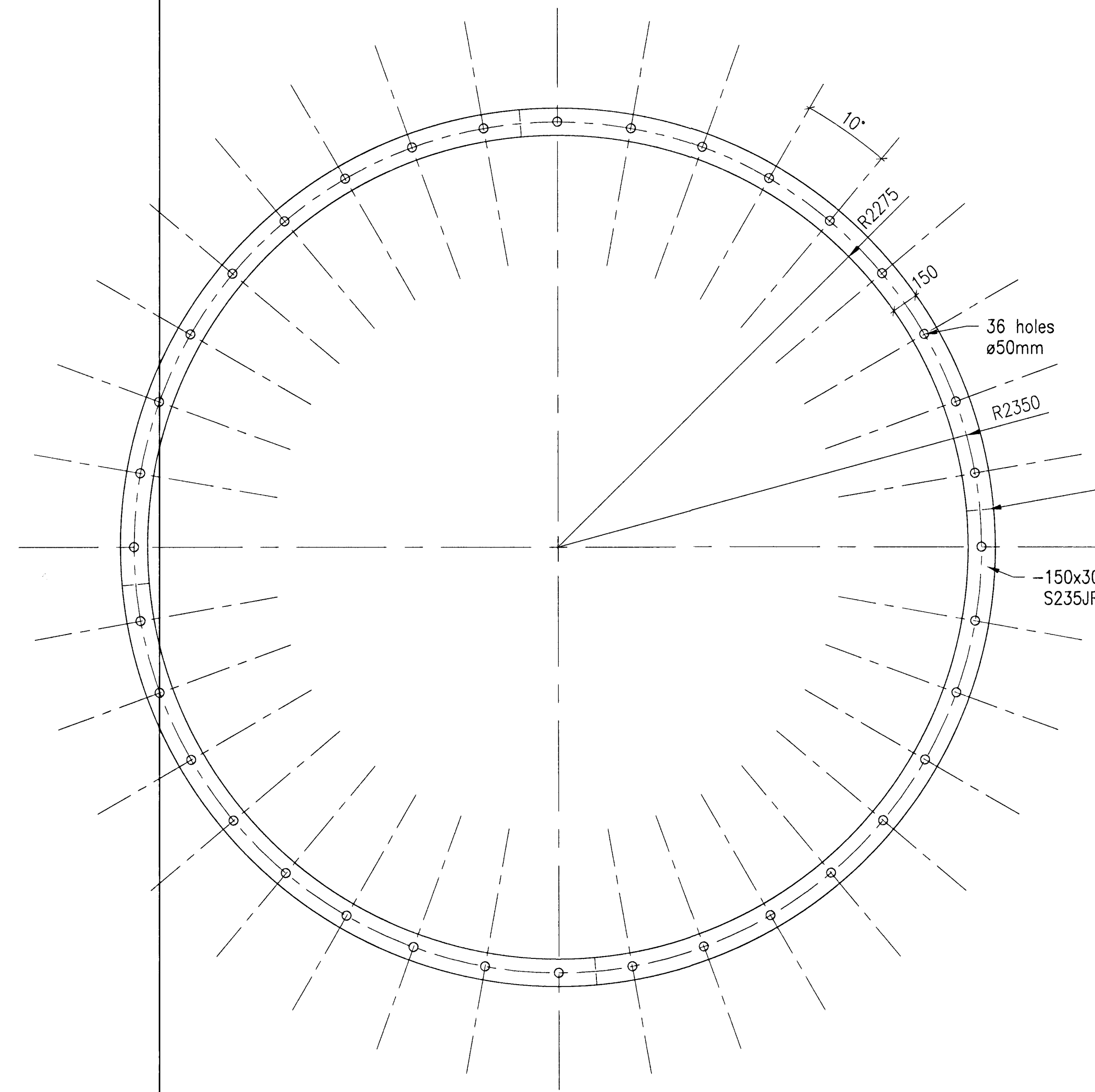


BOLT PLAN AND SURFACE ELEVATIONS 1:20



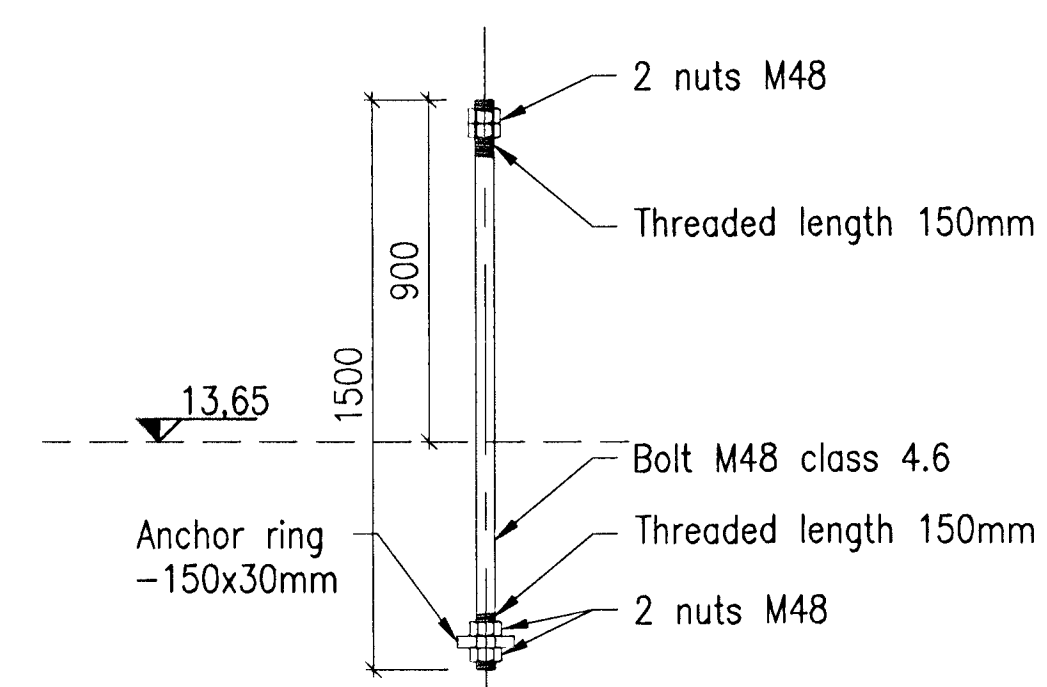
ANCHOR STEEL RING 1:20

1 pcs



ANCHOR BOLT 1:20

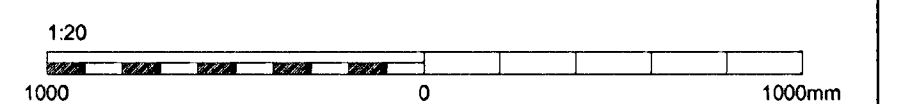
36 pcs



Samþykkt þann
05. júlí 2012
Byggingufulltrúnaði Hálfarvíki
Fh. Pósthúsi S. Gunnlaugsson

Níel Indriðason
Kt. 181144-3949

In the erection phase
the ring can be splitted
in 3 or 4 parts which are
welded together on site.

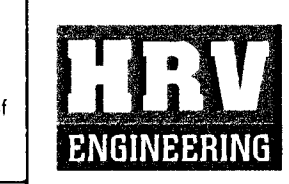


Skýringar: General notes refer to drawing IPU-431-CA-017-101.
Legend: Concrete quality: C30/37:XF3-25

Anchor bolts are to be fixed exactly into position before concreting.
Tread of bolts above top of concrete shall be protected at concrete work.

3	Issued for construction	2011.10.12	SE/LDB	NI	PG															
Fig. nr.	Rev. no.	Issued Date	Des./Draw	Yrkt. Old	Núlk. heiti Suppl. Ref.	Notk. heiti ISAL Ref.														

This drawing is the property of Rio Tinto Alcan Iceland Ltd. and handed out for personal use only. It may neither be copied nor made available to others without permission of Rio Tinto Alcan Iceland Ltd. The receiver is liable for any misuse.
Stærð: A1 Mkv.: 1:20
Formmat: Scale: 1:20
Dimensions without tolerances according to ISO 2768-1 medium.



Dagsetning / Date: 2011.09.15
Hannað / Designed: SE
Tekin / Drawn: ÁFV
Virkjafi / Supplier: HRV
Tekin nr. / verkfaka / Supplier drw. no.: IPU-431-CA-017-135
Samb. / Mkt. / Approved: Yrft / Chkd: NI
Hluti af: / Part of:

IPU-430 GAS TREATMENT
GTC2A
STACK AREA, EMBEDDED ANCHORS IN SLAB EL. 13,65
FORMWORK

Rio Tinto Alcan

Flokkur nr.: Blað nr.: Nasta bl. nr.:
Kostn. nr. - Ccno. / Búnr. - Eq. no.
AKS
Tökn. nr. ISAL / Drw. no. of ISAL: Breyt. / Rev.:
C
ISAL Samþykkt, dags. / ISAL Approved, date