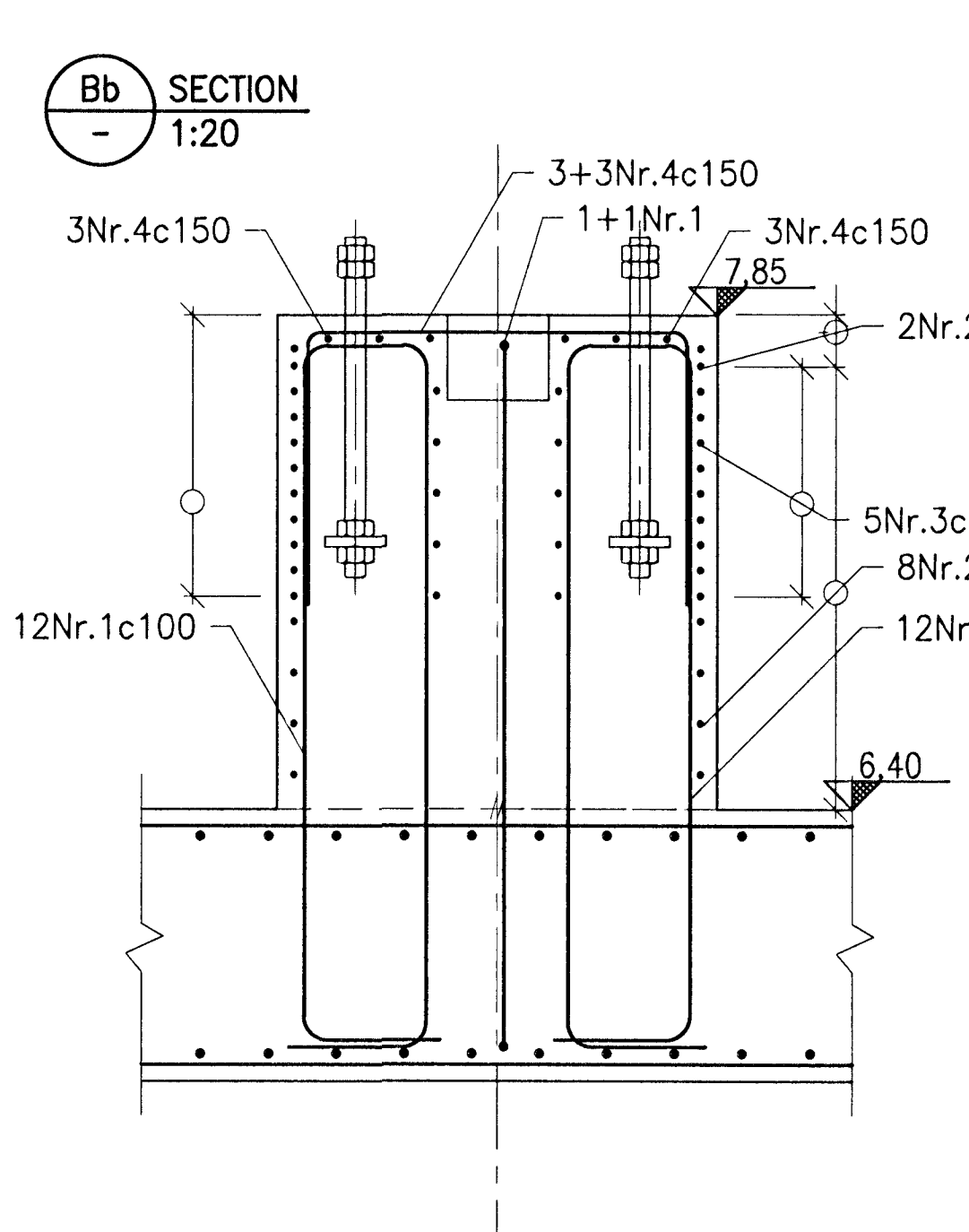
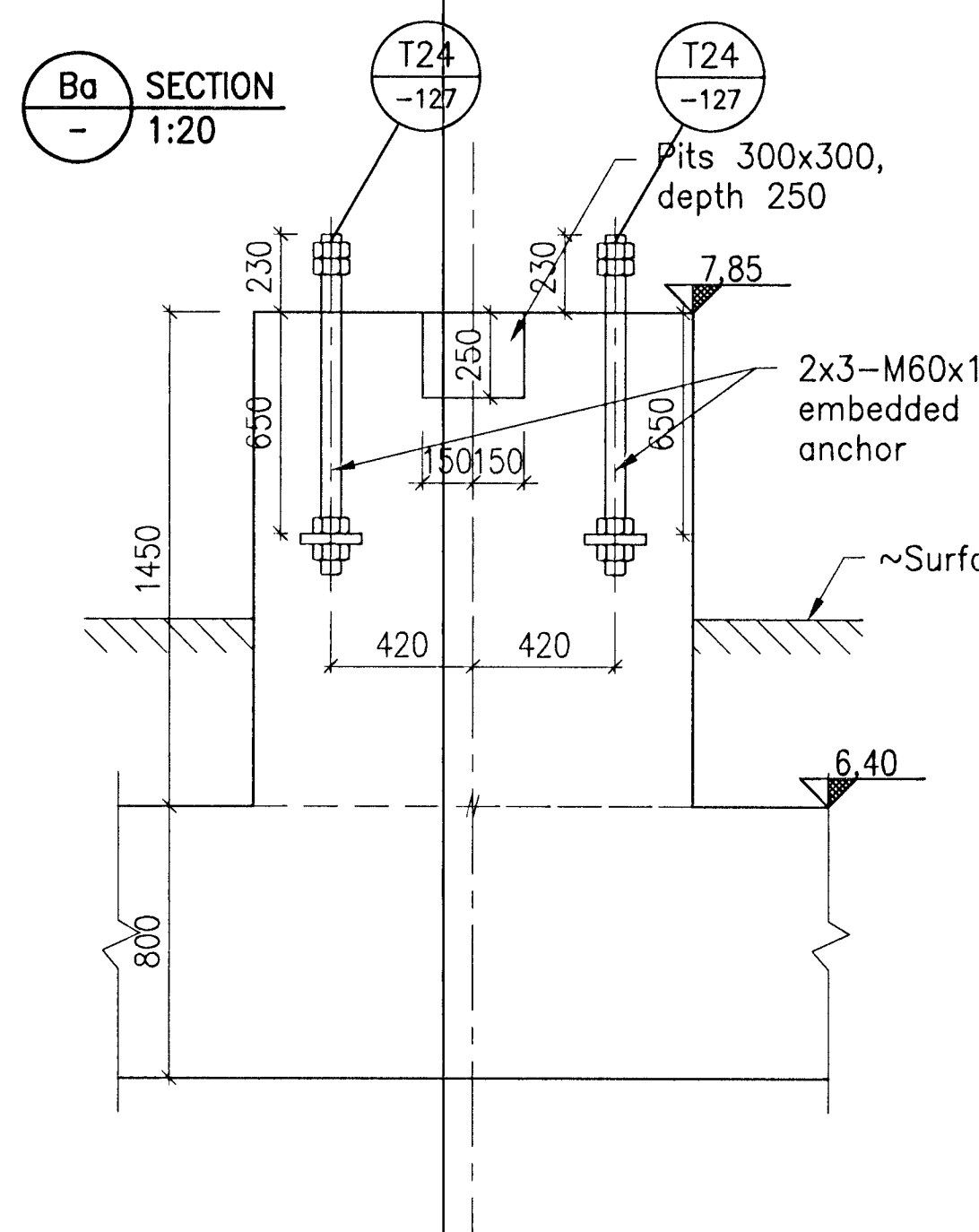
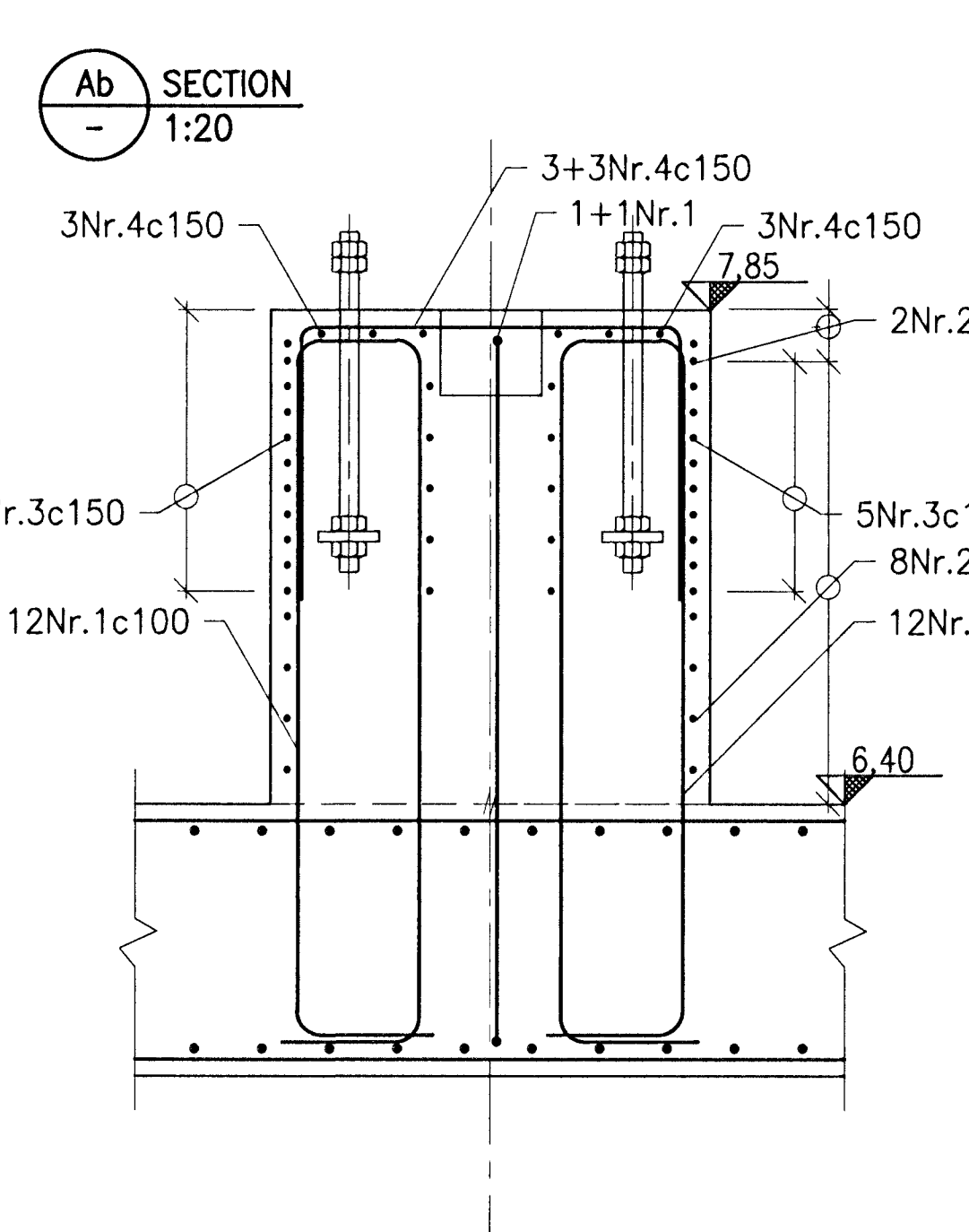
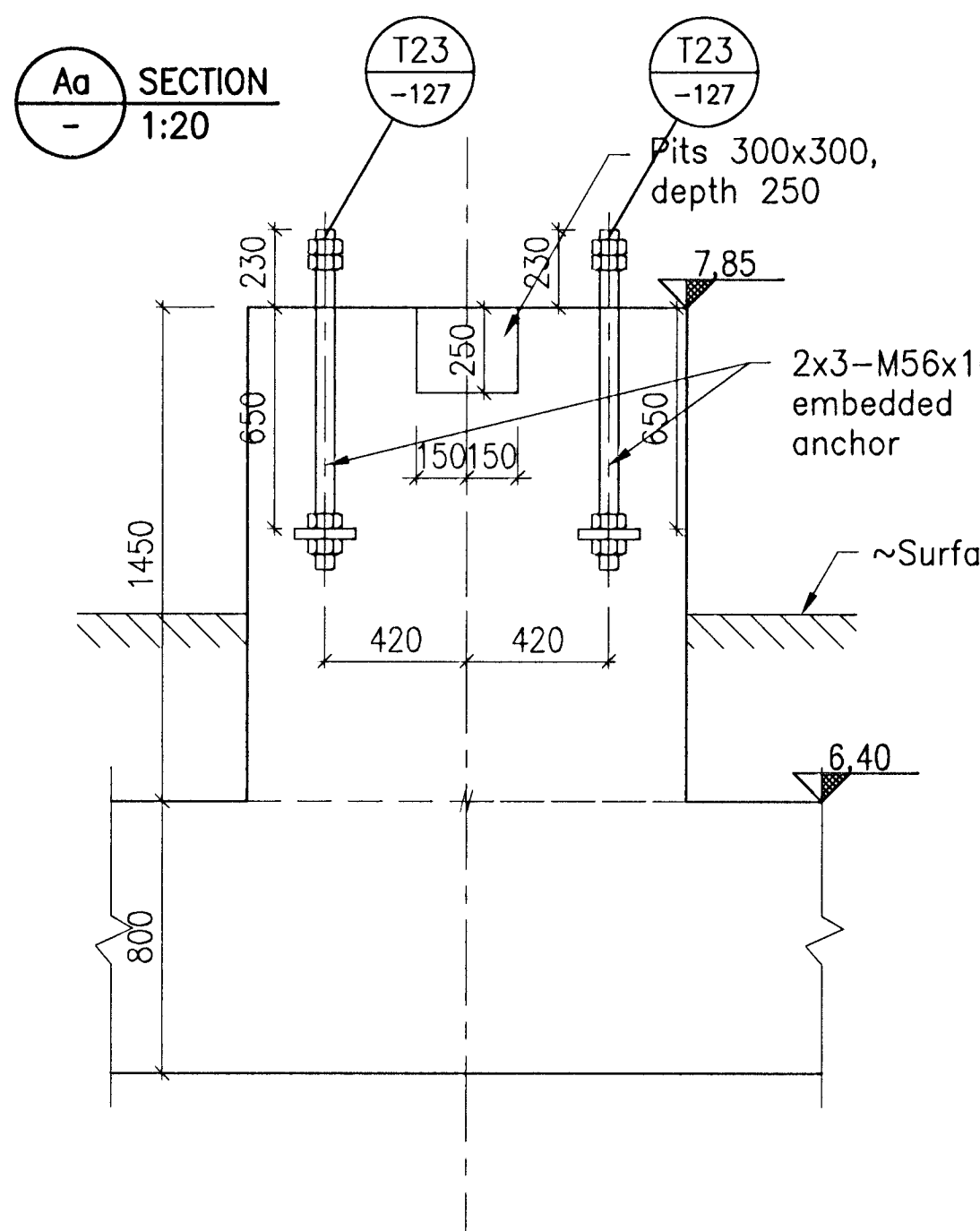
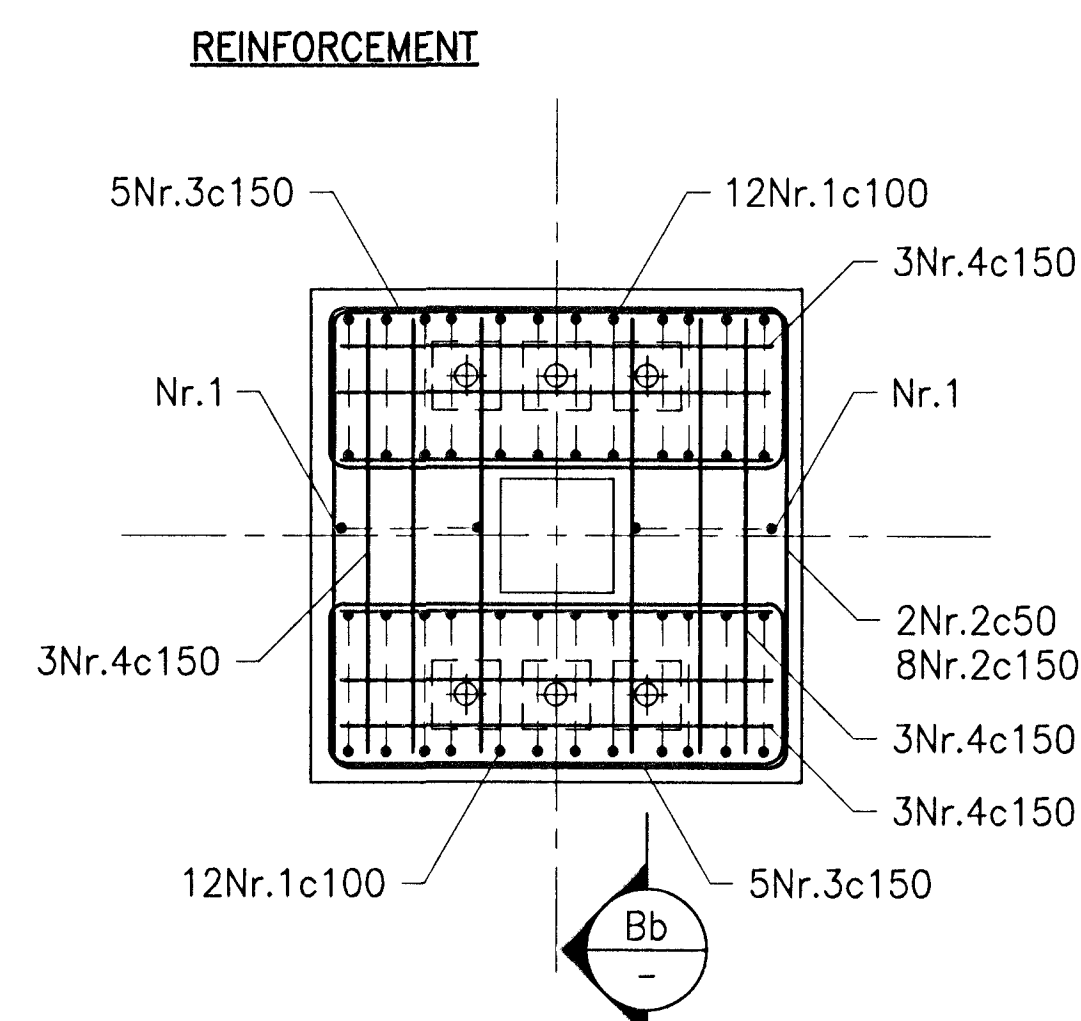
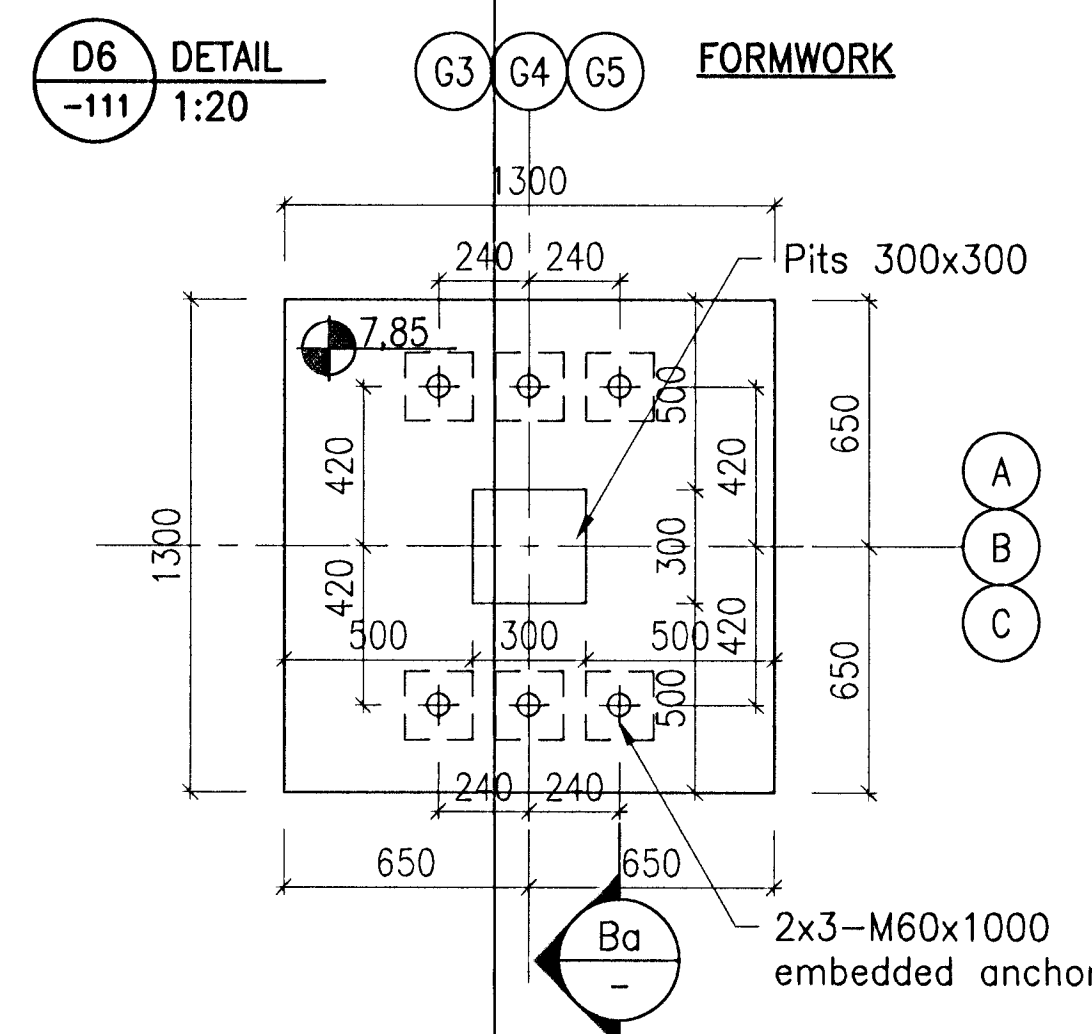
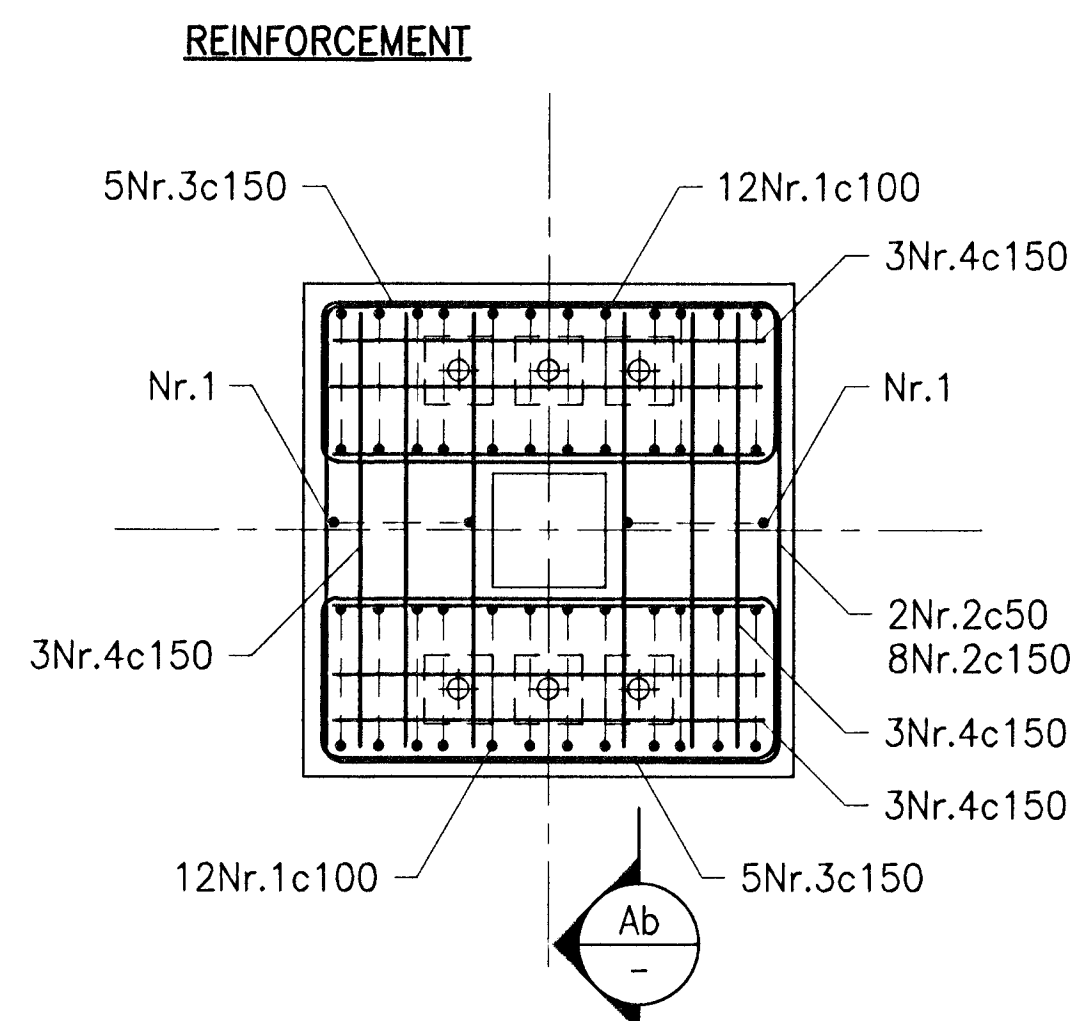
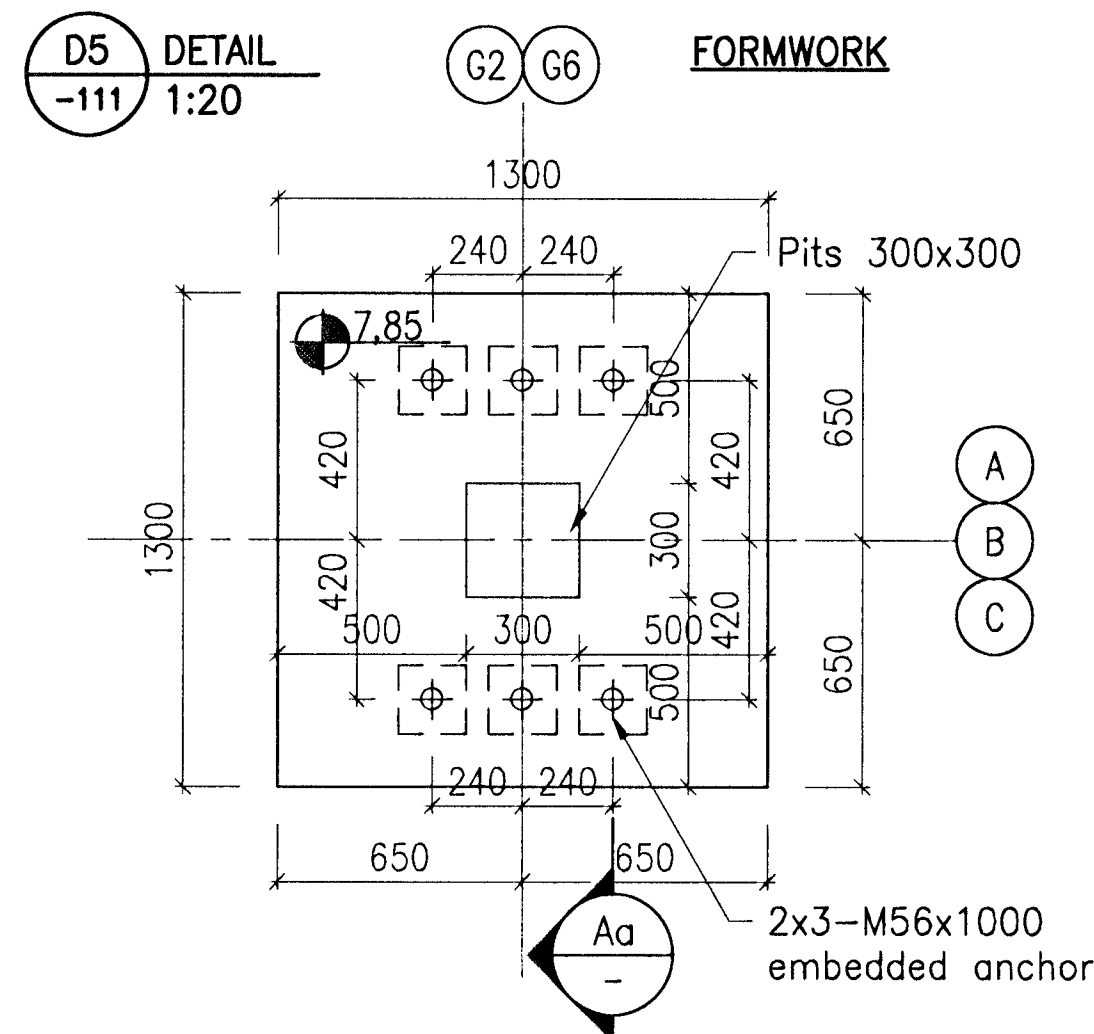
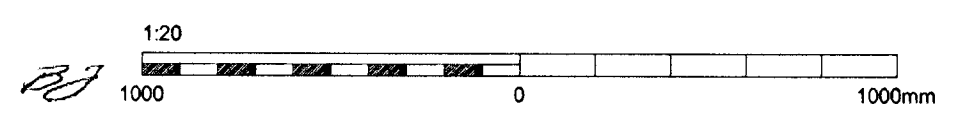
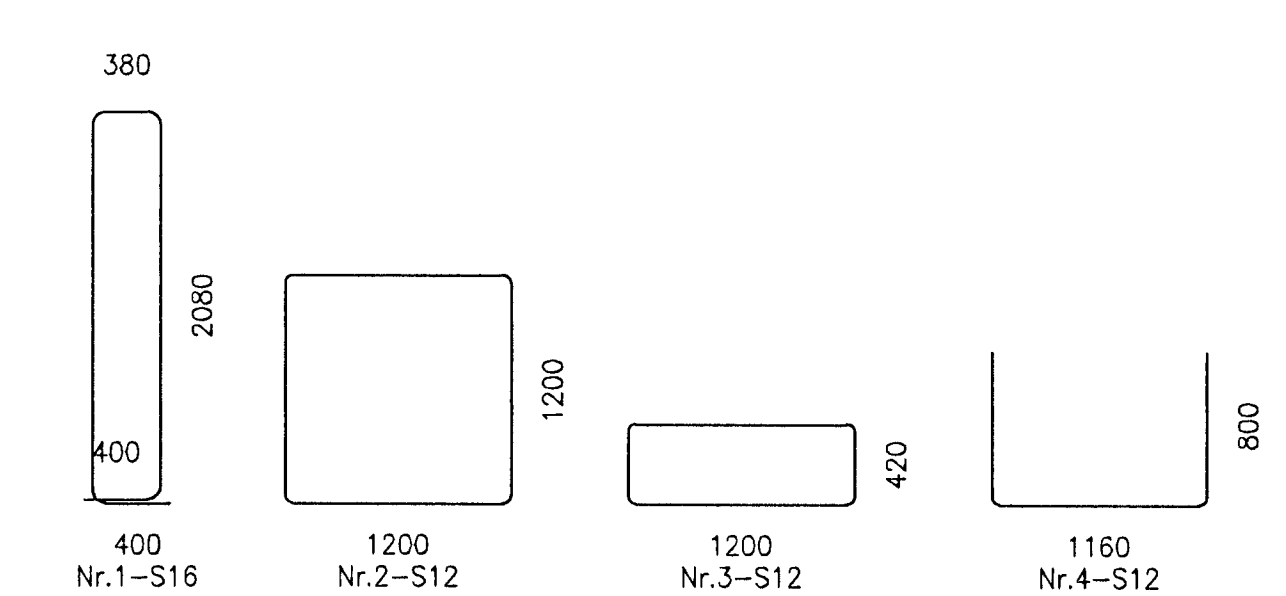


Samþykkt þann
05. júlí 2012
Byggingafræðingur (Hálfarfrétt)
F.h. Höfður S. Gunnlaugsson

Níels Indriðarson
Kt. 181144-3949



BAR SCHEDULE



Skýringar: General notes refer to drawing IPU-431-CA-017-101.
Legend: Concrete quality: C30/37:XF3-25
Forms for outside concrete corners shall be chamfered 30x30 mm.
Forms for pits shall have rough finish and the use of form-oil is not allowed.
Anchor bolts are to be fixed exactly into position before concreting.
Tread of bolts above top of concrete shall be protected at concrete work.

C:\VDP\04 IPU\400 Reduction\430 Gas Treatment\Drawings\Civil\IPU-431-CA-017-123.dwg

3	Issued for construction	2011.11.01	DEL	NI	PE				
Stj nr	Lýsing	Dagsetning	Stj/Te	Yfir	Wsk heim	Wsk heim			
Rev no	Description	Date	Des/Dir	Ord	Suppl	ISAL	ISAL		

This drawing is the property of Rio Tinto Alcan Iceland Ltd. and handed out for personal use only. It may neither be copied nor made available to others without permission of Rio Tinto Alcan Iceland Ltd. The receiver is liable for any misuse.

Stærð: A1 Mkv: 1:20
Format: A1 Mkv: 1:20
Dimensions without tolerances according to ISO 2768-1 medium.

HRV ENGINEERING

Dagsetning / Date: 2011.09.15
Hannað / Designed: DEL
Tekni / Drawn: DEL
Verkfari / Supplier: HRV
Tækn.nr.verktaka / Supplier draw.no: IPU-431-CA-017-123
Samþykkt / Approved: NI
Múti af: / Part of:

IPU-430 GAS TREATMENT
GTC2A
FILTER AREA, FOUNDATION DETAIL D5-D6
FORMWORK, REINFORCEMENT

ISAL Tekn.nr. ISAL / Drawn of ISAL Breyt./Rev: C
Alcan Iceland Ltd Staumark IS-222 Hálfarfréttur Ísland

Flakkur nr.: Blað nr.: Nasta bl.:
Kostn.nr.-Cena. / Búnr.-Eq.no
AKS

ISAL Yfirland og skilb. dags / ISAL Checked, date ISAL Samþykkt, dags / ISAL Approval, date