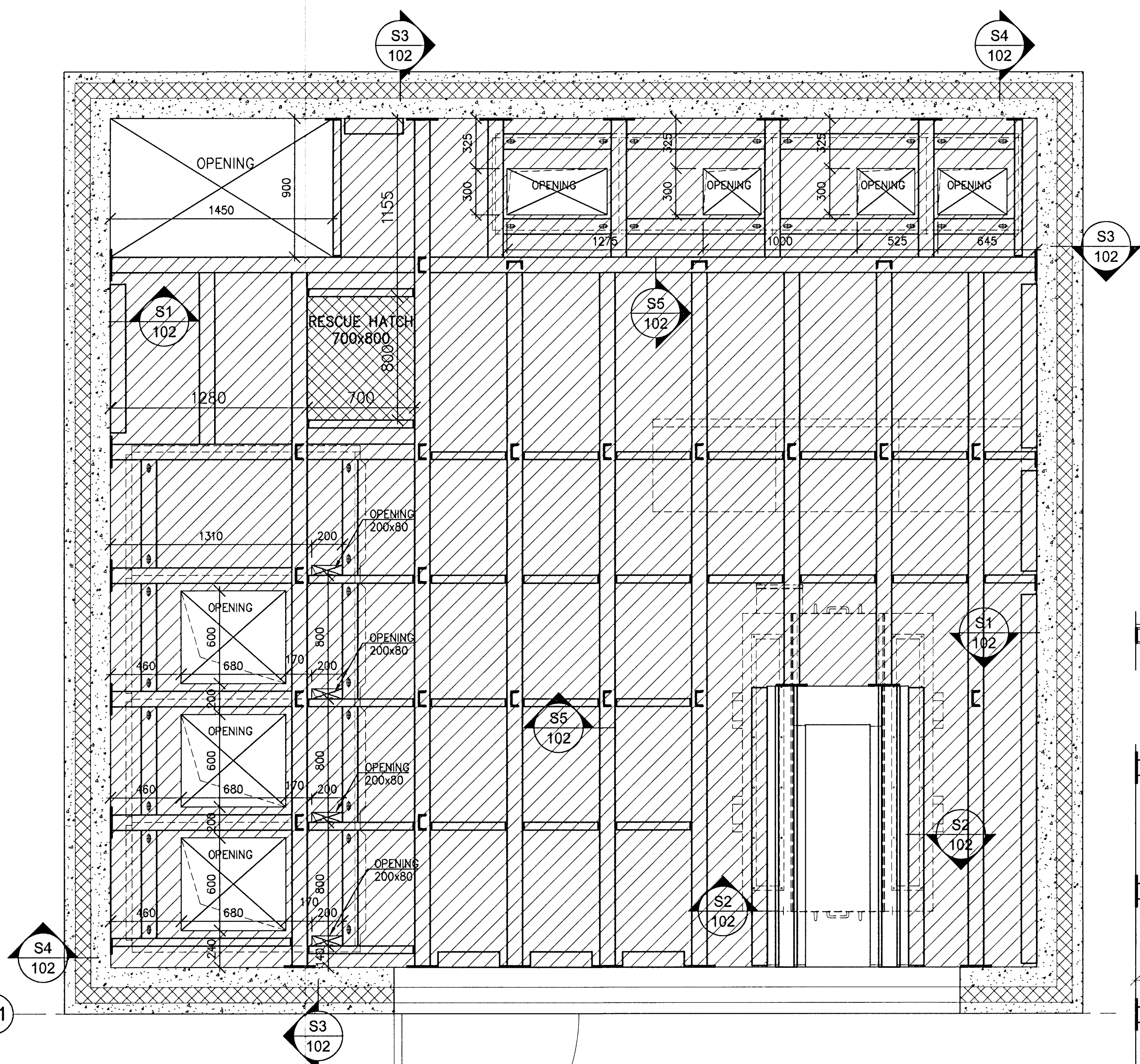
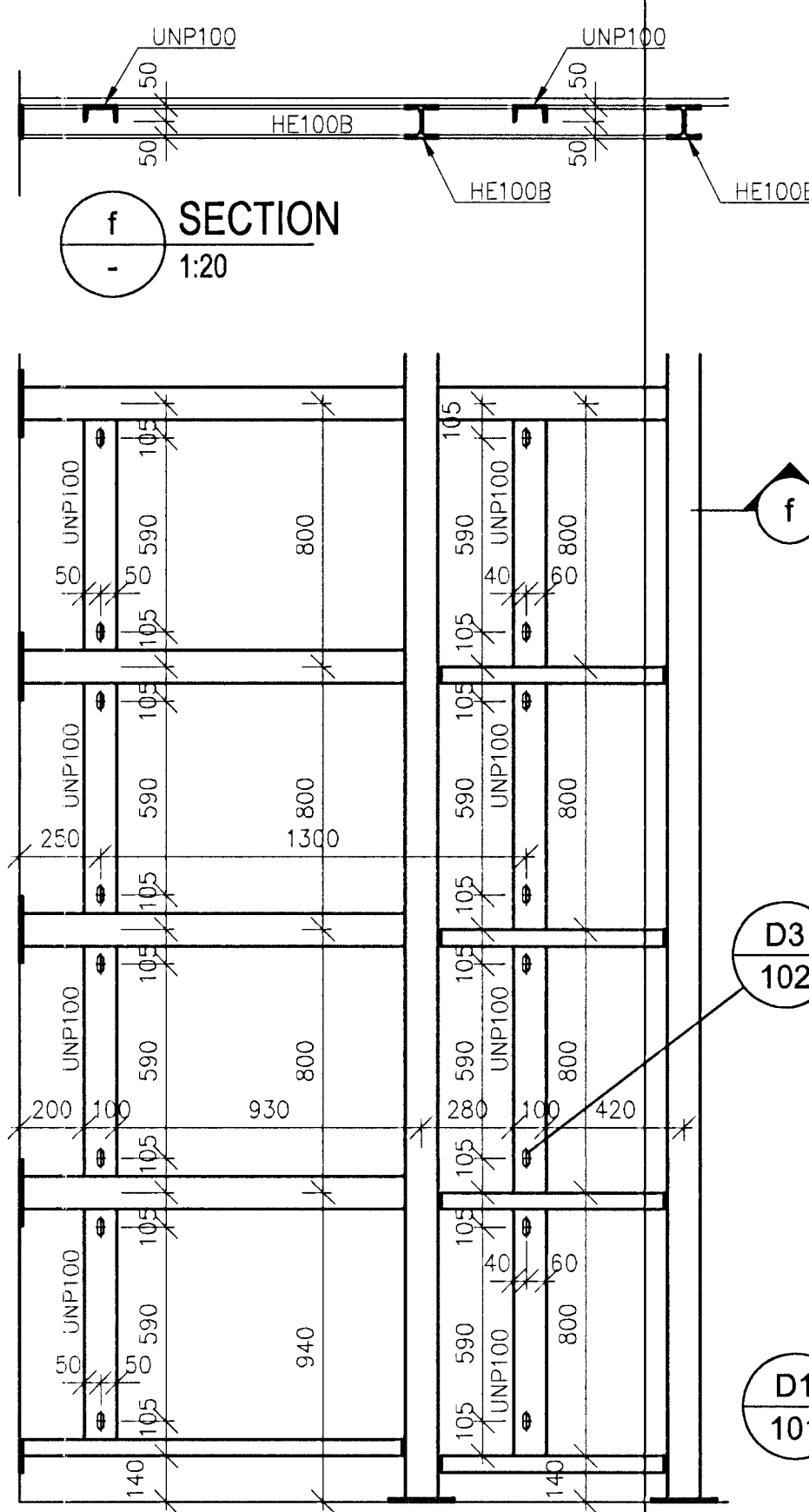
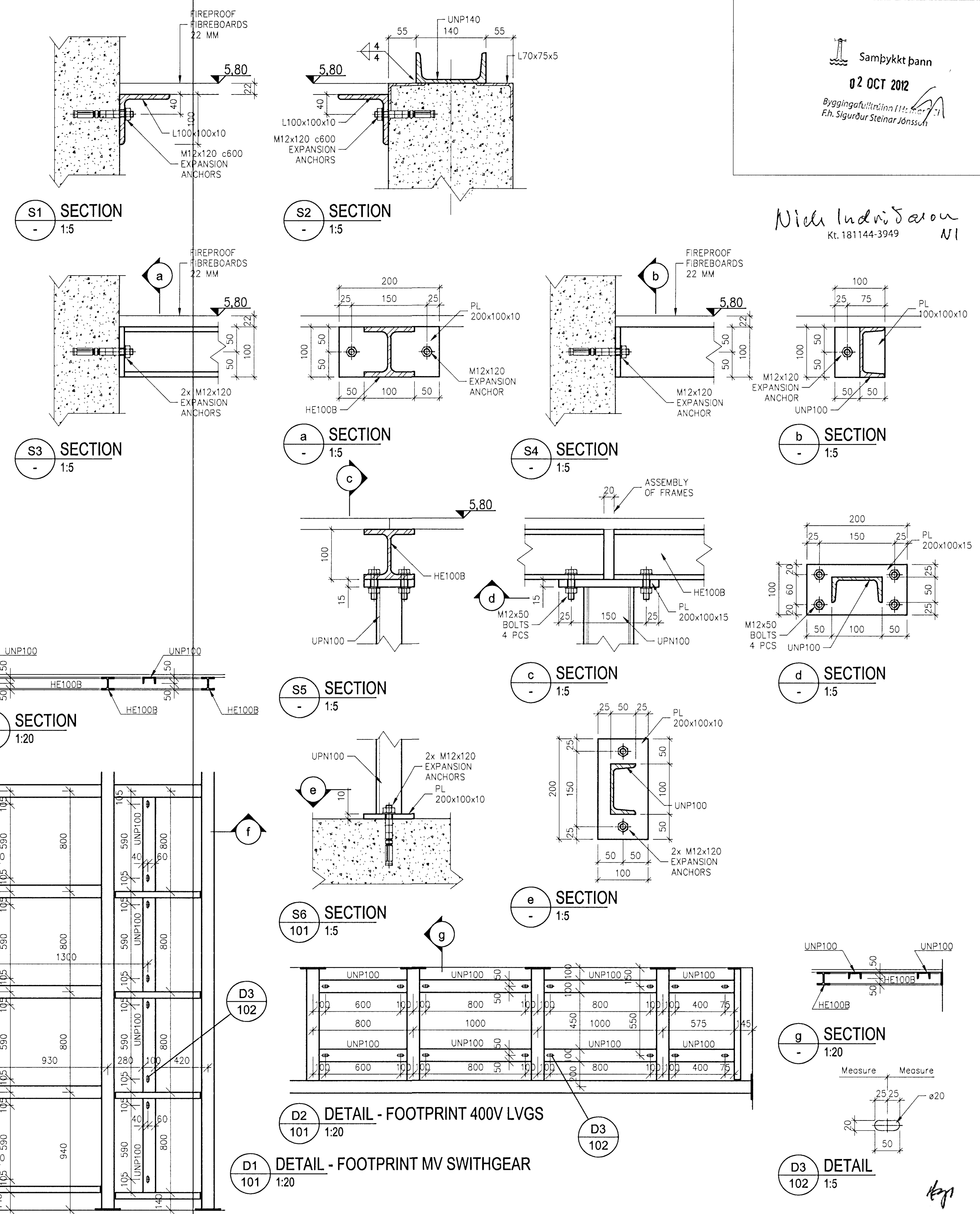


Samþykkt bann  
02 OCT 2012  
Byggingafulltrúiinn í Húsavík  
F.h. Sigurður Steinar Jónsson

Níel Indriðason  
Kt. 181144-3949 NI

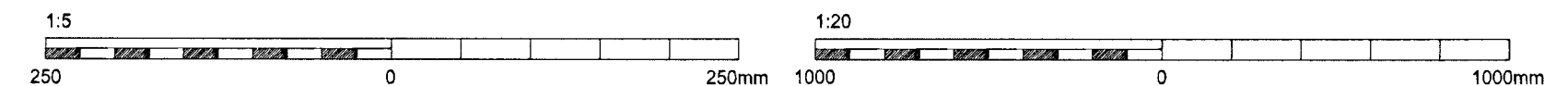


PLAN LEVEL (EL 5,80)  
1:20



D2 DETAIL - FOOTPRINT 400V LVGS  
101 1:20

D1 DETAIL - FOOTPRINT MV SWITCHGEAR  
101 1:20



Skýringar:  
Legend:

PERMISSIBLE TOLERANCE UNLESS OTHERWISE SPECIFIED	
Tolerance for laying the floor frame are: Evenness tolerance: 1 mm within a measuring of 1 m. Straightness tolerance: ±1 mm per 1 m, but not more than 3 mm over entire length of 3 m.	
WELDING QUALITY UNLESS OTHERWISE SPECIFIED	
Welding quality: Level C according to IST EN ISO 5817 Steel: According to IST EN ISO 5817	FOR BUTT WELDS COMPLETE PENETRATION WELDS 4 As Built
FOR FILLET WELDS a=0,7x, lmin a=4 mm	2012.02.16 GMG NI FH

This drawing is the property of Rio Tinto Alcan Iceland Ltd. and handed out for personal use only. It may neither be copied nor made available to others without permission of Rio Tinto Alcan Iceland Ltd. The receiver is liable for any misuse.		Dagsetning / Date: 2010.05.28		Flökkur nr.: Blað nr.: Nasta bl.nr.:	
HRVA HATCH ISAL PRODUCTION OPERATIONS		Hamab / Designed: HFB / Drawn: HFB/AFV		Kostn.nr - Cono. / Bón.nr - Eq.no: 4011 / 16940	
Stærð: A1 Mkv: 1:20/5 Format: A1 Scale: 1:20/5 Dimensions without tolerances according to ISO 2768-M medium.		Verktaki / Supplier: HRV		Teikn.nr verkloka / Supplier drw.no: ICC-212-CA-517-102	
Hluti af: / Part of:		Yfir / Chfd: HJH		Teikn.nr. ISAL / Drw.no of ISAL: 260557	
		ISAL Vefiraf og skráð, dags / ISAL Checked, date		ISAL Samþykkt, dags / ISAL Approval, date	