

Níels Indriðason
Kt. 181144-3949
NI

GENERAL NOTES

- Elevations are in metres in Hafnarfjörður elevation system
- Stands for elevation 0,00 m on sections
- Stands for elevation 0,00 m on plans
- All dimensions shown are either metres or millimetres
- Indicates thickness of wall or slab 200 mm
- Detail no. 12
- Indicates location of section
- Shown on DWG no. 105
- Indicates a construction joint
- Revision no X shown on drawing:

GENERAL NOTES FOR REINFORCEMENT

- Reinforcing bars shall be of the following quality:
B500C conforming to NS 3576-3
K500TE (TEMPCORE) according to NS 3570, marked as S
Plain bars, marked as R, are of quality Fe 360
- Ribbed bar without endhooks located in far face of a wall, or bottom face of a slab
- Ribbed bar without endhooks located in near face of a wall, or top face of a slab
- Bars d=20 mm, length 6000 mm spacing 200 mm over the distance marked.
- Stirrup, d=12 mm, spacing 200 mm
- Bar bent anchorage length into adjoining wall, slab or beam.
- Indicates thickness of construction element and direction of other bars in far face or nearer bars in near face.
- Concrete cover for reinforcement (tolerances acc. to FSENV1992)
Bottom face in foundations 50 mm
Outside surface 40 mm
Top of slab with traffic 60 mm
except slab on filling 40 mm
Other surfaces 30 mm

GENERAL NOTES FOR STRUCTURAL STEEL

- MATERIAL SPECIFICATIONS**
- Bolts, nuts and washers shall be of type 8.8 according to IST EN ISO 4014, IST EN ISO 4032, IST EN ISO 7091 and IST EN ISO 898-1, hot dip galvanized.
- Structural steel: S235JR (EN10025)

TIGHTENING OF BOLTS (CLASS 8.8)

BOLT diameter (mm)	TORQUE (Nm)
10	50 ± 10
12	90 ± 10
16	220 ± 10
20	420 ± 20
24	720 ± 20
27	1050 ± 20
30	1450 ± 20

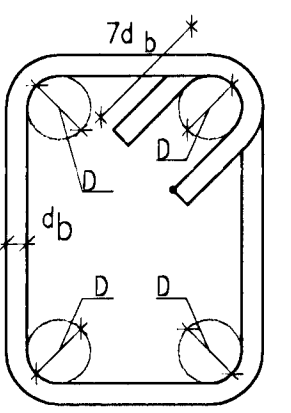
The values in the table do apply, when not otherwise stated on the drawings, or in absence of comparable information from bolt supplier.
The table does not apply for high strength bolts in slip resistant connections.

GENERAL NOTES FOR CONCRETE

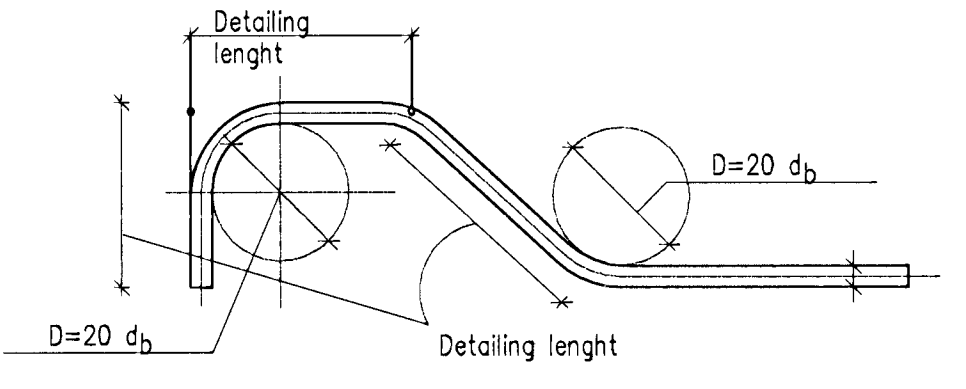
- Concrete production.: see specification.
- Concrete quality will be specified on relevant drawing.
- Drawings will show where special concrete finishes are required.
- Compressive strength will be determined by testing standard 150x300 mm cylinders in accordance with ENV 206: 1990.
- Test cylinders shall be made and cured in accordance with ENV 206: 1990.
- The concrete class prescribed for each structural component will be expressed in the form: Cbb/cc: XEi-D
Where bb is the specified cylinder strength in MPa (ENV 206).
cc is the specified cubic strength in MPa (ENV 206).
XEi is the exposure class.
D is the normal maximum particle size in mm, see standard technical specification.
Ready mix concrete.
Example: C30/37:XF3-38

REINFORCEMENT STIRRUPS

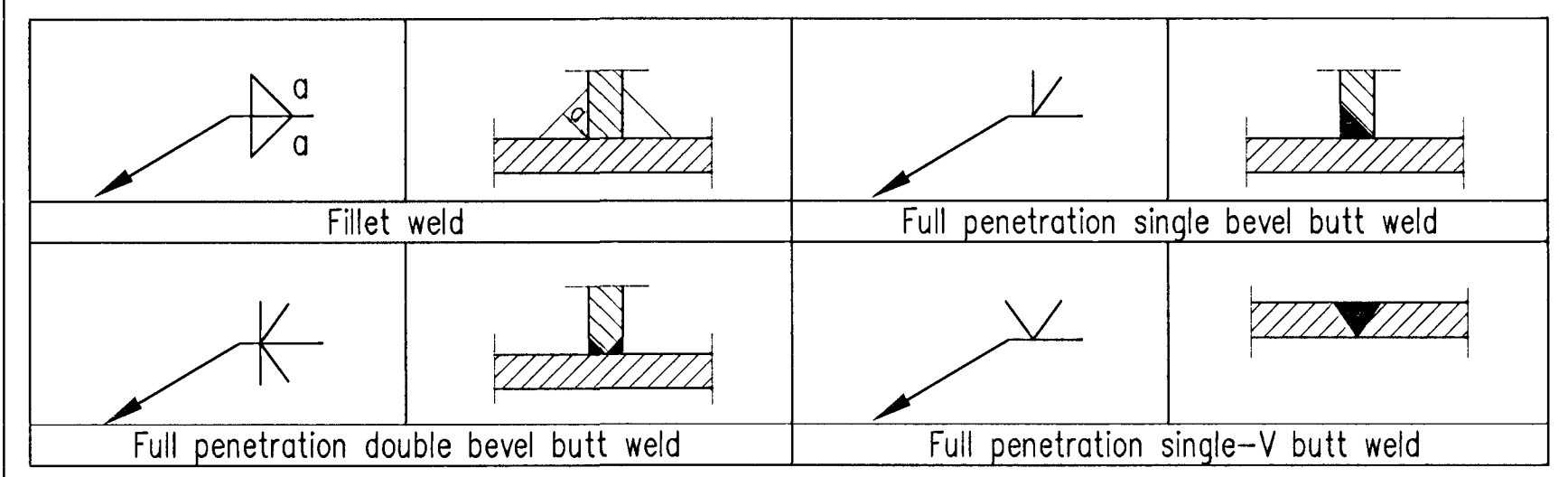
D=3 d_b or diameter of enclosed bar



REINFORCEMENT BENDING



WELDINGS



All unmarked butt welds shall be full penetration weld.
All unmarket fillet welds shall be a= 0,7 x thinner welding element.

Skýringar:
Legend:

Ólg. nr	Revisión	Útdagsetning	Stofn/Des/Drw	Yfirf. Old	Notk. heim	Notk. heim	Notk. heim
4	Record Drawing	2012.07.23	GMG	NI	PS	NI	PS

This drawing is the property of Rio Tinto Alcan Iceland Ltd. and shall not be copied nor made available to others without permission of Rio Tinto Alcan Iceland Ltd. The receiver is liable for any misuse.

HRV HATCH
ISAL PRODUCTION OPERATIONS

2011.05.13
Hannaó / Designed
GMG
Verktaki / Supplier
HRV
Tékn.nr.verktaka / Supplier drw.no.
ICC-611-CA-541-600
Samþykkt / Approved
Yfirf. / Chkd
NI

IPU-CASTHOUSE EXTENSION BUILDINGS, RAMPS
RAMPS 1 AND 2
CONCRETE WORK AND STRUCTURAL STEEL

Flokkur nr.: 5010
Bláð nr.: 16957
Nasta bl.nr.:
Kostn.nr.-Cno. / Bú.nr.-Eq.no.
AKS
UF002
Breyt./Rev.

RioTinto Alcan
ISAL
Tékn.nr. ISAL / Drw.no. of ISAL
253513
A

ISAL Yfirfari og skráð, dags / ISAL Checked, date
ISAL Samþykkt, dags / ISAL Approval, date