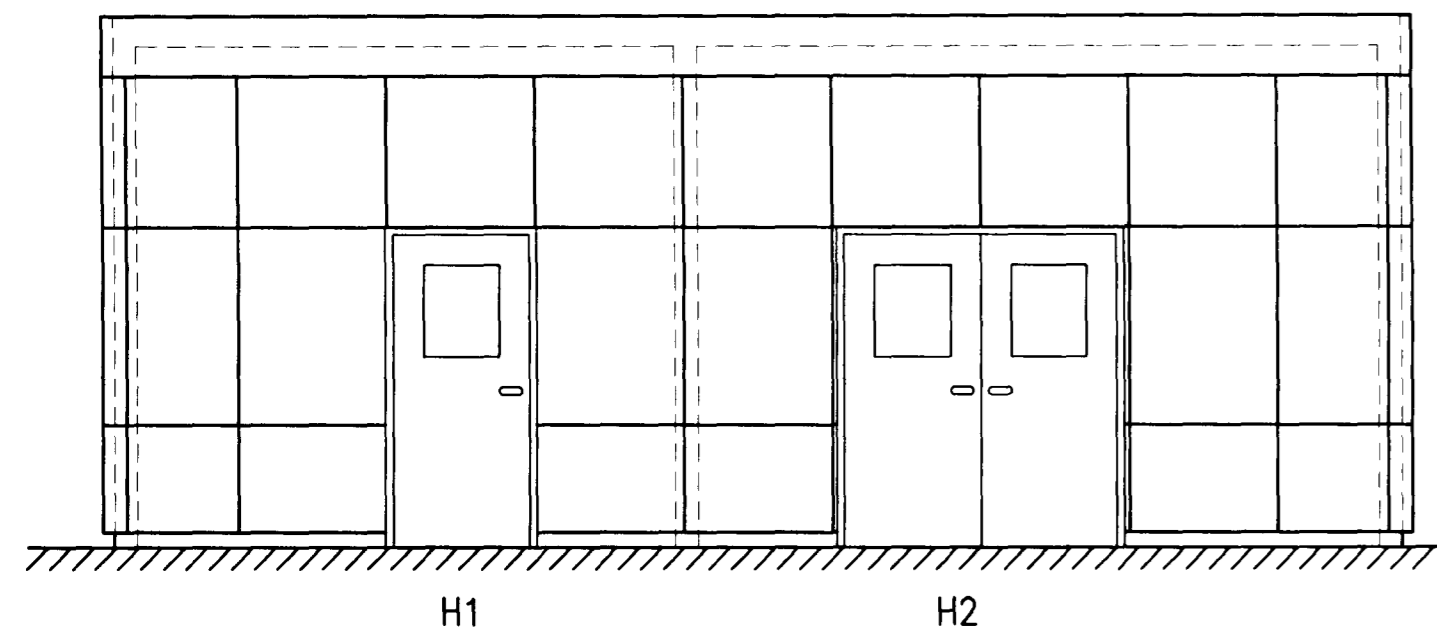
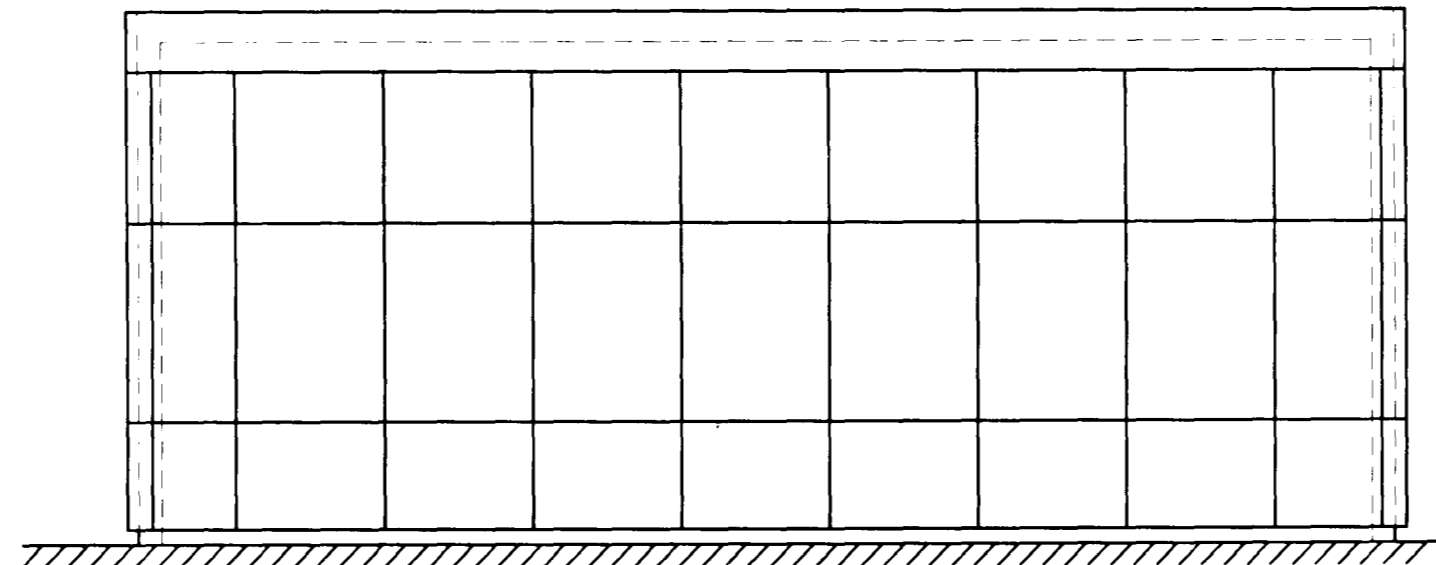


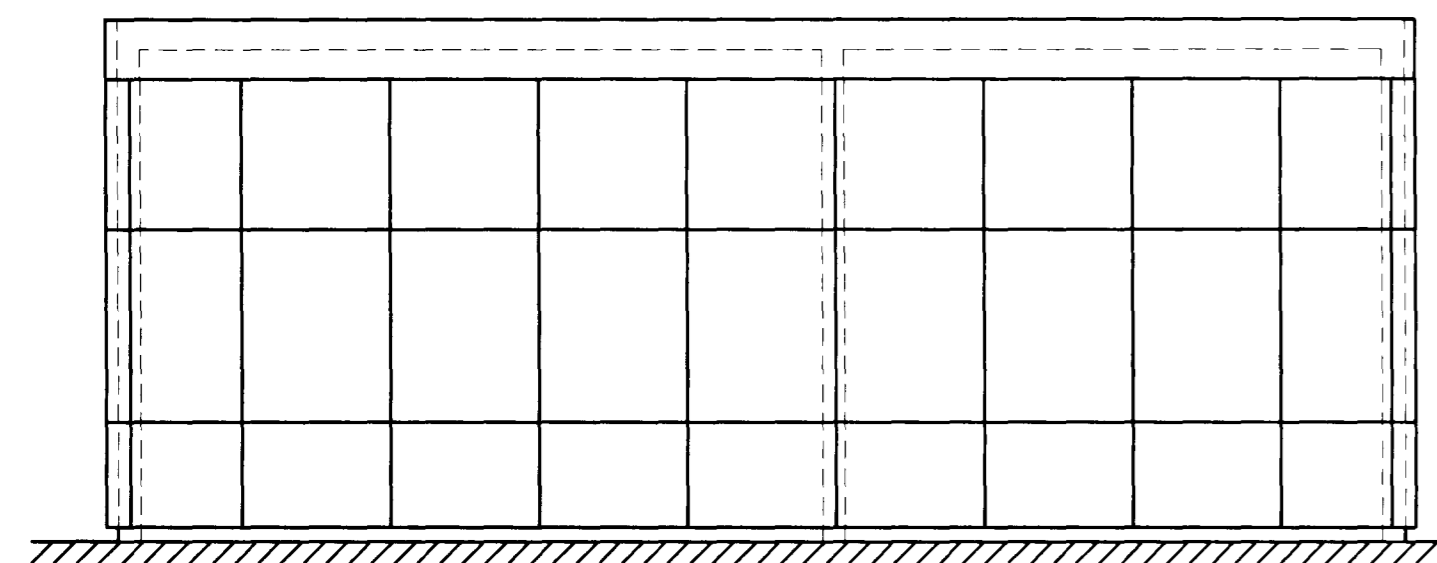
Samþykkt þann
 16.08.2002
 Byggingatulltrúinn í Hafnarfirði
 F.n. Kristján Þorarinsson



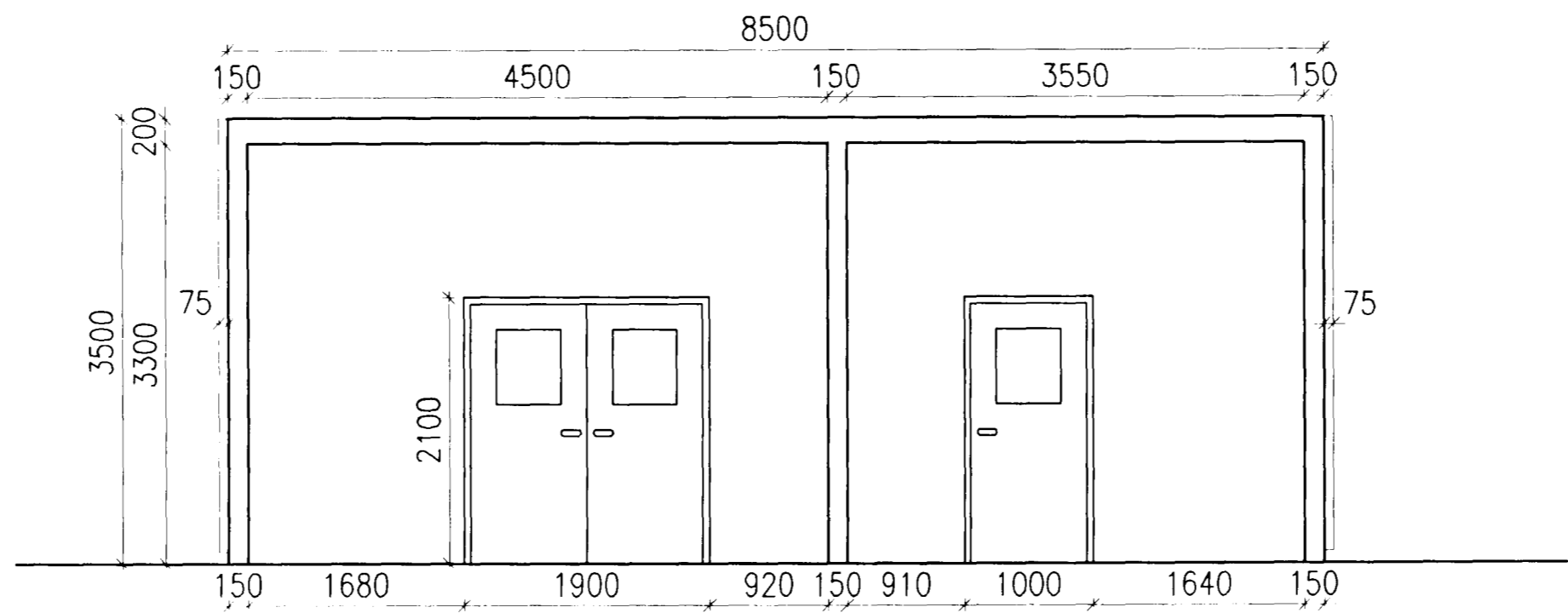
A-HLID



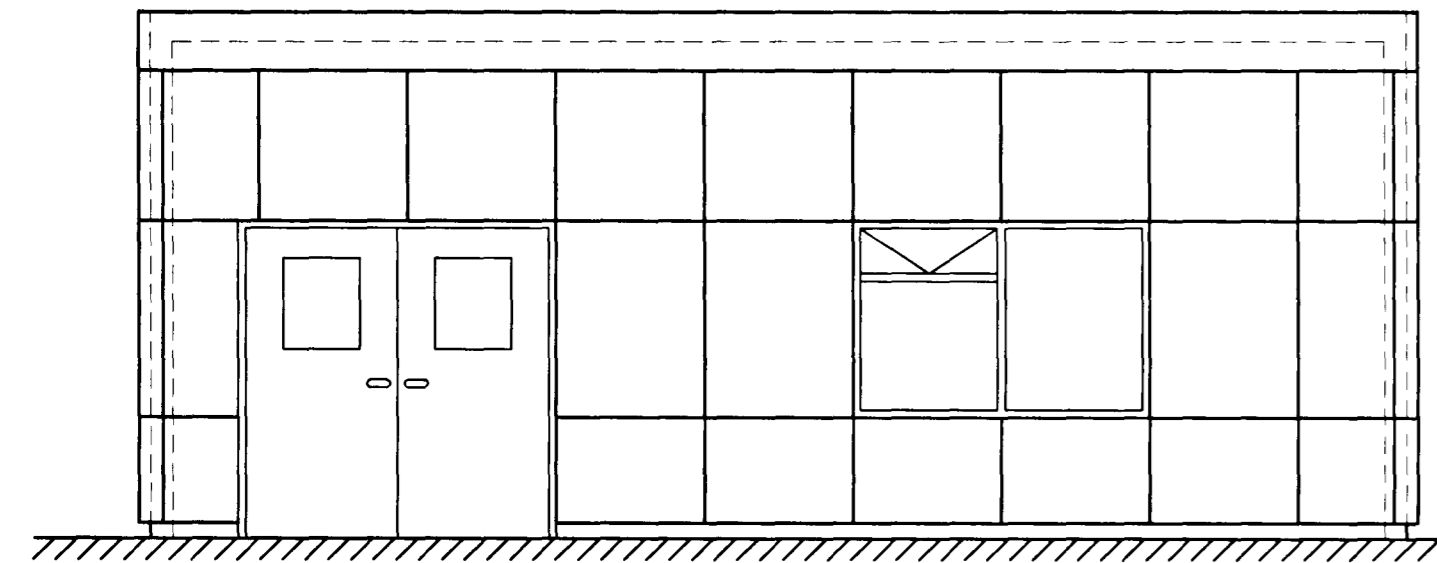
N-HLID



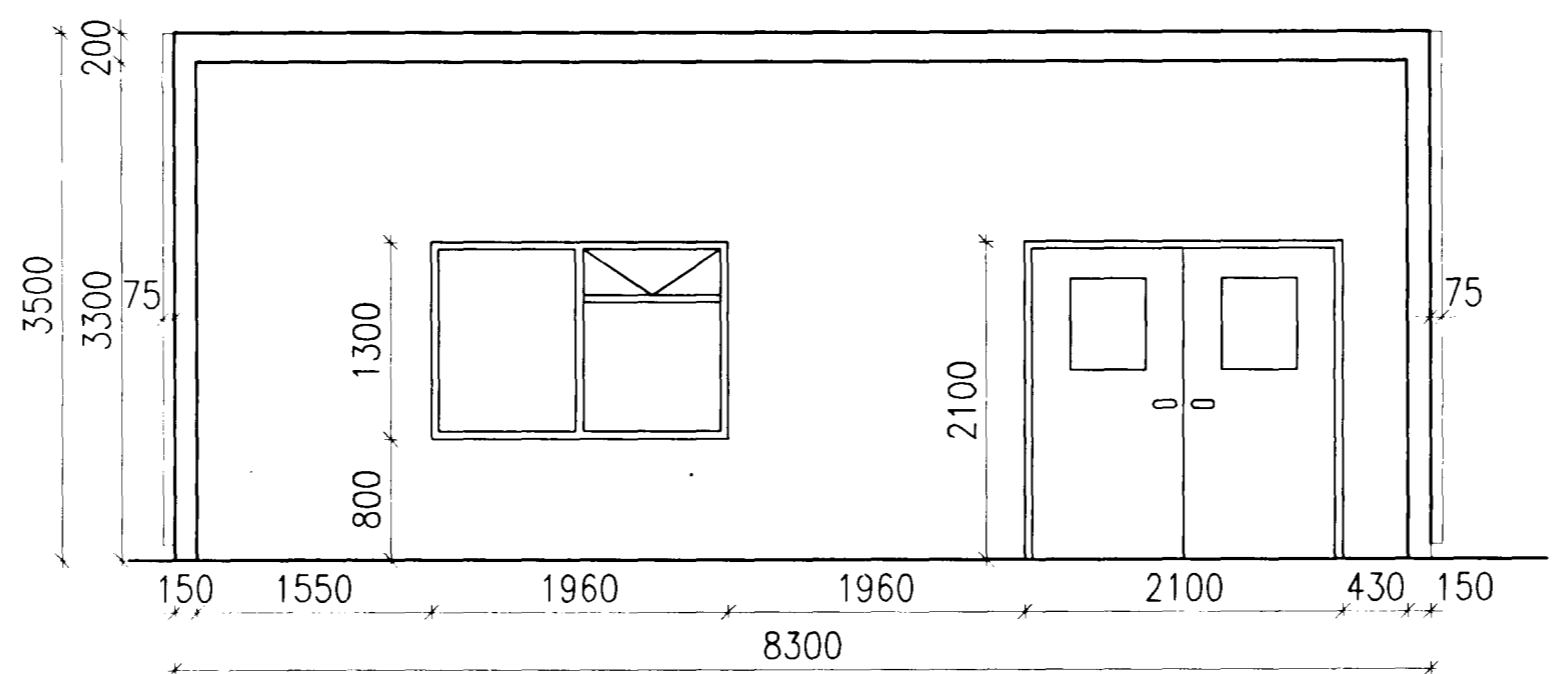
V-HLID



A SNID, 1:50



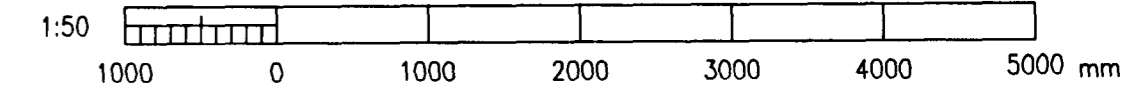
S-HLID



B SNID, 1:50

Stökkvindhöfuðborgarsvæðisins hf.
 11.02.02

Núskráning 15000-1500



J:\{99-1xx}\991110\verkh1 42\Teikn\42-02.dwg

Skýringar:
 Explanations:

This drawing is the property of the ICELANDIC ALUMINIUM CO. LTD. and handed out for personal use only. It may neither be copied nor made available to others without permission of the ICELANDIC ALUMINIUM CO. LTD. The receiver is liable for any misuse.

Fjöldi stúkkja Number of pieces		Hlutur Object	Atriði Item	Efni Material	ea.stk Weight (kg)	totalt heild Total weight	Athugasemdir Remarks
IV	III	II	I				STEYPUKÁLI, MHL. 12
							FRAMLEIÐSLUSKODUNARHÚS
							BYGGINGARTEIKNING, YFIRLIT OG GRUNNMYND
							VERKFRÆÐISTOFA SIGURDAR THORODDSEN HF. 99.110-42.02 1
							TEIKNÖÐ NI/HFB 16.08.2002 Yfirfarið Checked NI 16.08.2002 Samþykkt Approved NI 16.08.2002
							algroup alusulsse primary materials Icelandic aluminium co. ltd p.o. box 244 is-222 hafnarfordur, iceland
							168118 1
							TEIKNÖÐ 16.08.2002 Yfirfarið og skráð Checked and filed 16.08.2002
							16.08.2002

VST Verktæknifélag
 Sigurður Thoroddsen M.
 Arnarhólavegur 51m 105 5000 Fax 599 5010

Teikningar nr. ISAL
 Ref. drawing no. of ISAL

Samsættiteikningar nr. ISAL
 Assembled drawing no. of ISAL

