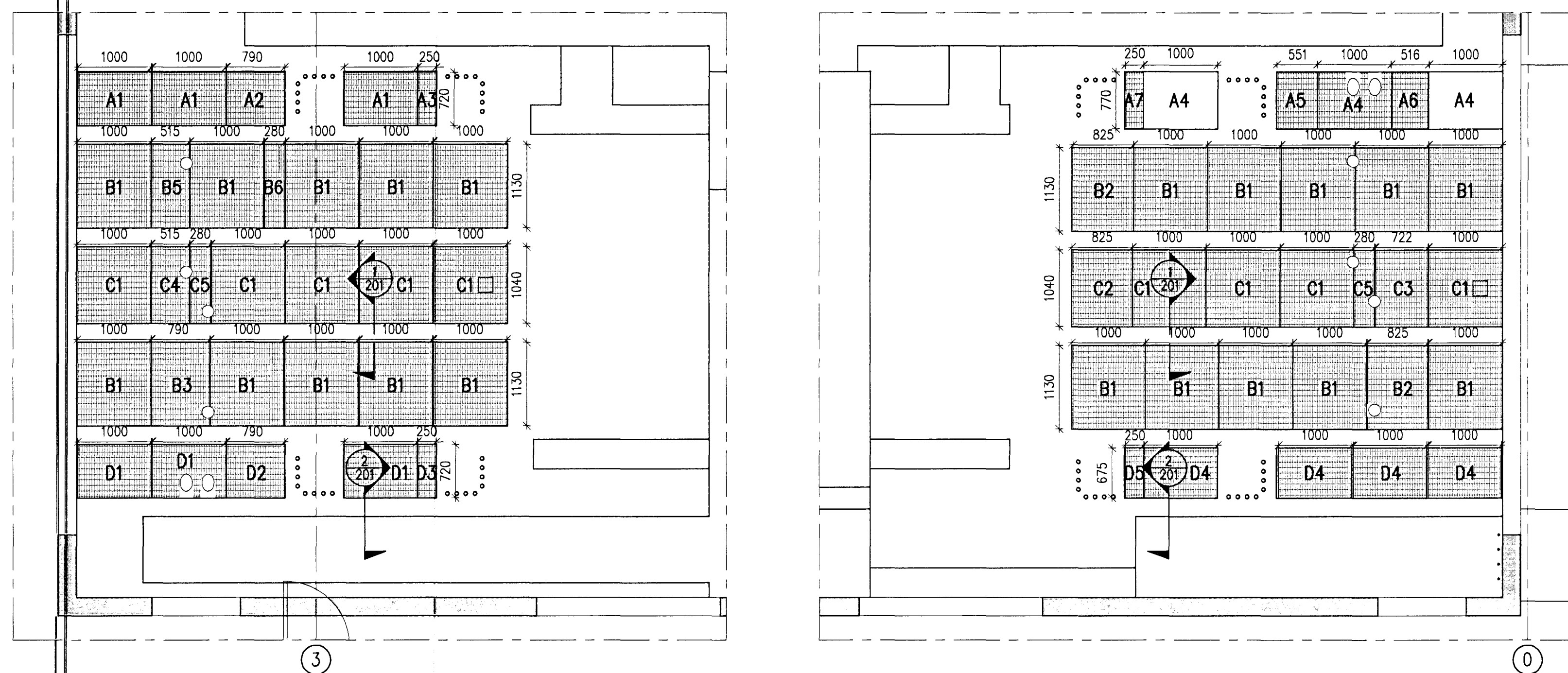


Nick Indriðason
 Kt. 181144-3949
 NI

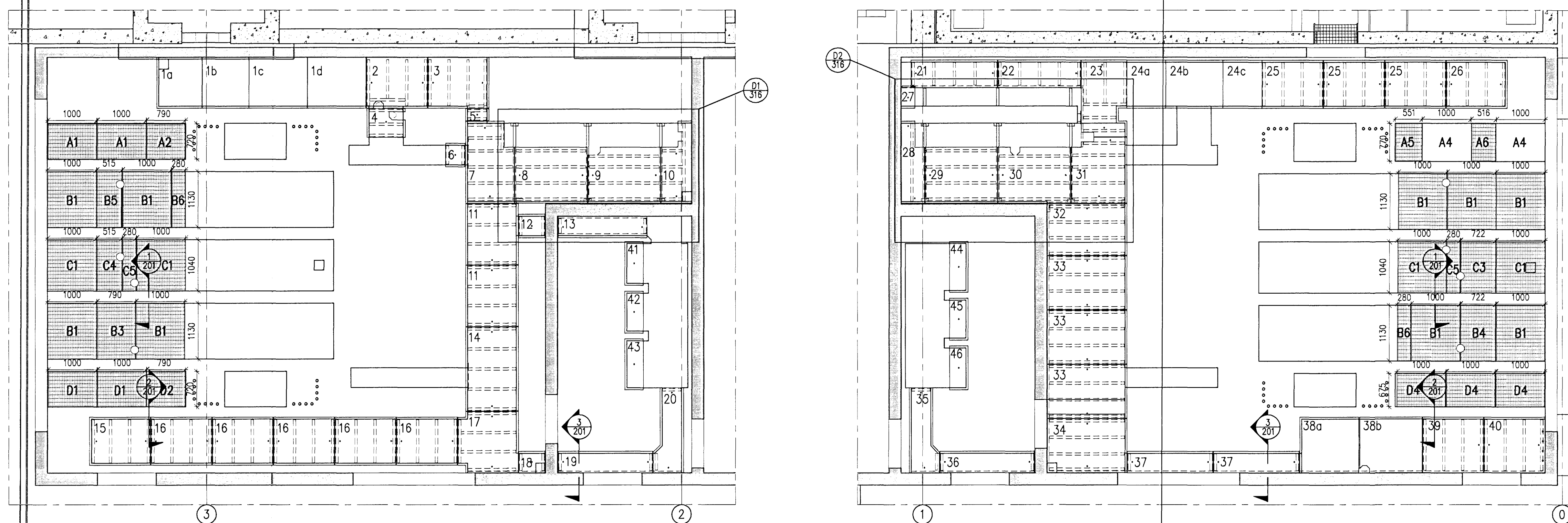
WELAND GRATING H6 40/3, BOTTOM PLAN VIEW, 1:50



GRATING SIZES

Nr.	Length	Width	Pcs.	Note
A1	720	1000	5	
A2	720	790	2	
A3	720	250	1	
A4	770	1000	5	1 pcs with cutout
A5	770	551	2	
A6	770	516	2	
A7	770	250	1	
B1	1130	1000	29	10 pcs with cutout
B2	1130	825	2	1 pcs with cutout
B3	1130	790	2	2 pcs with cutout
B4	1130	722	1	2 pcs with cutout
B5	1130	515	2	2 pcs with cutout
B6	1130	280	3	
C1	1040	1000	13	4 pcs with cutout
C2	1040	825	1	
C3	1040	722	2	2 pcs with cutout
C4	1040	515	2	2 pcs with cutout
C5	1040	280	4	4 pcs with cutout
D1	720	1000	5	2 pcs with cutout
D2	720	790	2	
D3	720	250	1	
D4	675	1000	7	
D5	675	250	1	

WELAND GRATING H6 40/3 AND COVER PLATES, TOP PLAN VIEW, 1:50



Skýringar: GENERAL NOTES

Legend:
 Steel: S235
 Bolts: 8.8
 All grating, support angles, beams and anchorbolts to be hot dip galvanized, min 80µ.
 Grating: Weland H6 40/3 Mesh size 34x75 or similar.
 Dimensions shall be determined on site.

C:\DP\01\DP\400 - Reduction\410 Substation\Drawings\Civil\DP-410-ZA-015-215.dwg

Útg nr	Rev no	Lýsing	Útgáfa	Dagsetning	Stað	Yfirl	Notk heim	Notk heim	ISAL Ref
2		Record drawing		2012.09.12	HS	NI	BS	res->	

This drawing is the property of Rio Tinto Alcan Iceland Ltd and handed out for personal use only. It may neither be copied nor made available to others without permission of Rio Tinto Alcan Iceland Ltd. The receiver is liable for any misuse.

Sheet: A1
 Format: A1
 Scale: 1:50
 Dimensions without tolerances according to ISO 2768-1 medium.

HRV HATCH
 ISAL PRODUCTION UPGRADE

Dagsetning / Date: 2011.09.14
 Hannab / Designed: HS
 Tekn / Drawn: LDB
 Verktaki / Supplier: HRV
 Tekn.nr.verktaka / Supplier drwno: IDP-410-ZA-015-215
 Samþykkt / Approved: NI
 Hluti af: / Part of:

IPU410-RECTIFIER BUILDINGS		Flokkur nr.:	Bláð nr.:	Nasta blnr.:
A5/S1		4011		
GRATING AND COVER PLATES, PLAN VIEWS		Kostn.nr.-Cno. /	Bún.nr.-Eqno	
STRUCTURAL STEEL		4011	13981	
RioTintoAlcan		AKS	UB11	
ISAL		Tekn.nr. ISAL /	Drwno. of ISAL	Breyt / Rev
ISAL		251352		A
ISAL Yfirfari og skráð, dags / ISAL Checked, date		ISAL Samþykkt, dags / ISAL Approval, date		