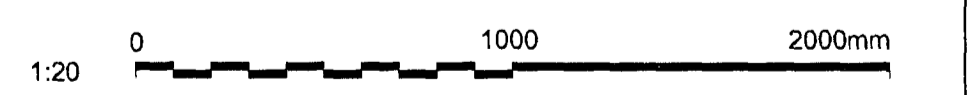
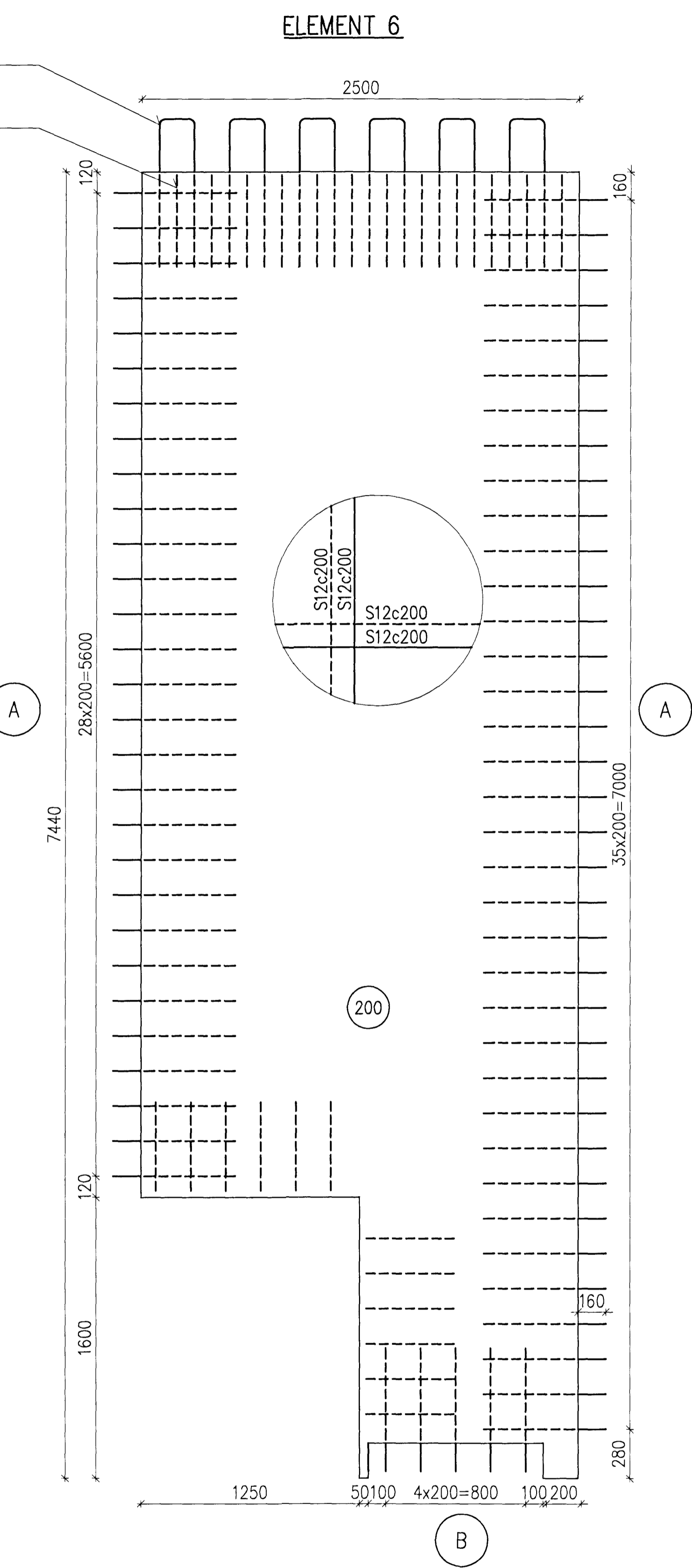
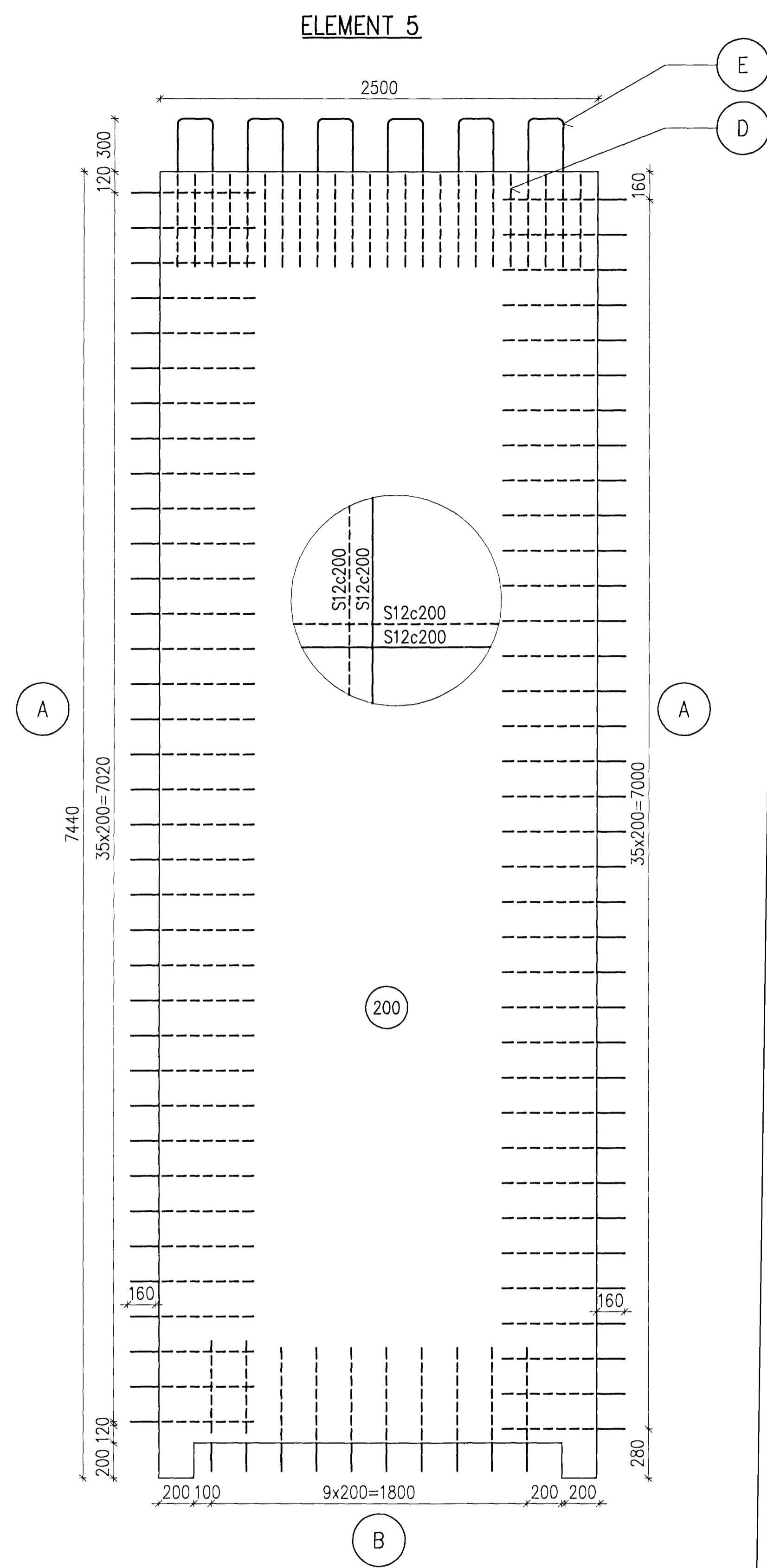
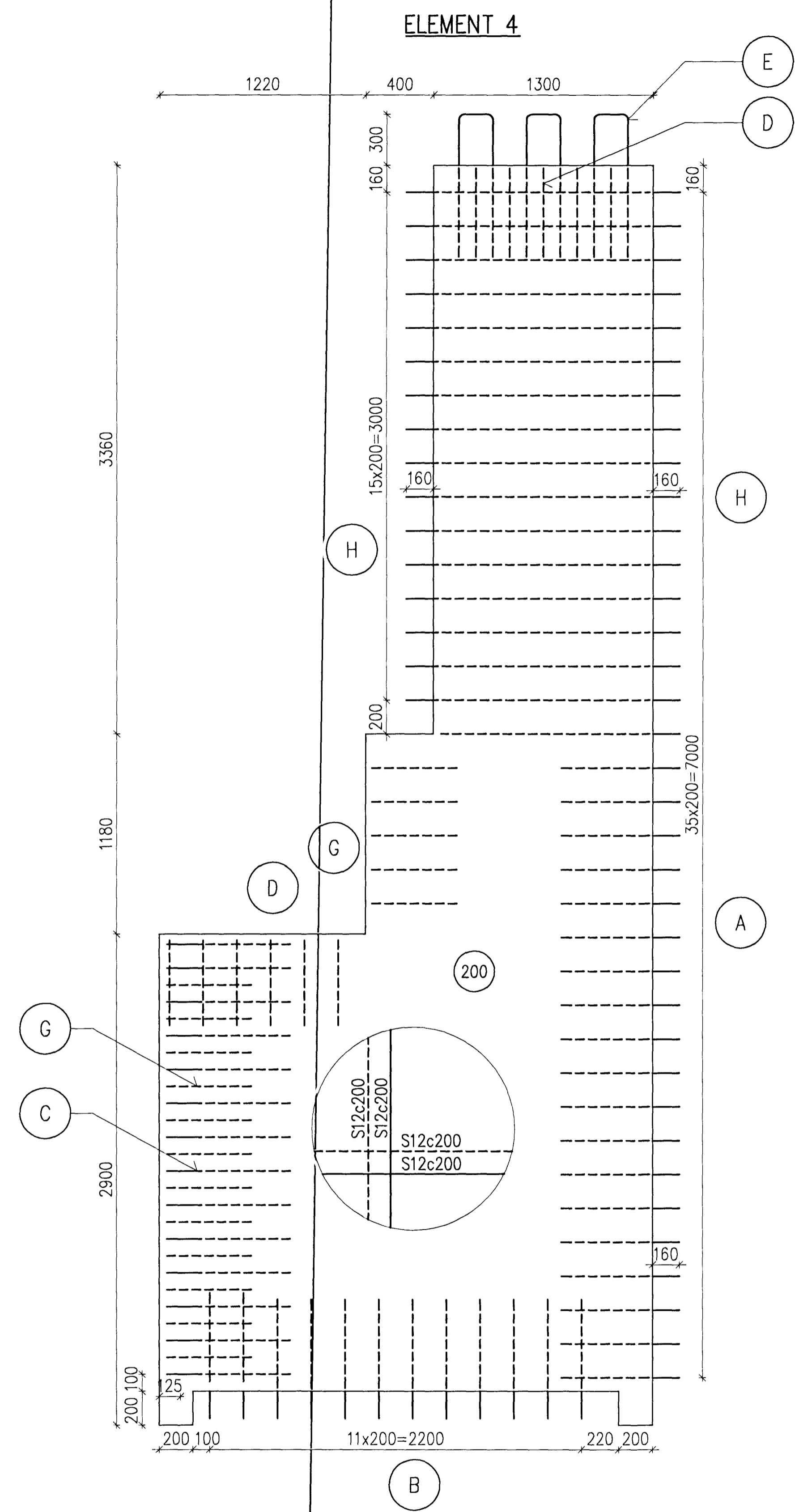


Samþykkt þann
 01 OCT 2012
 Byggingafulltrúðinn / Háfarerfiði
 Fh. Sigurður Steinar Jónsson

Nick Indriðason
 Kt. 181144-3949 NI



Skýringar: Stirrups details see drawing 272.
 Legenda:

| | | | | | | |
|---------|-------------------|-----------------|-----------------|----------|---------------------|-------------------|
| 3 | Record drawing | 2012.09.12 | HS | NI | kg | PER |
| Dwg. nr | Using Description | Dagsetning Date | Har/Tin Des/Drw | Yfir Ckd | Notk heim Suppl Rel | Notk here ISAL Re |

This drawing is the property of Rio Tinto Alcan Iceland Ltd. and handed out for personal use only. It may neither be copied nor made available to others without permission of Rio Tinto Alcan Iceland Ltd. The receiver is liable for any misuse.
 Starð: A1 Mkv: 1:20
 Formát: Scale: Dimensions without tolerances according to ISO 2768-1 medium.



Dagsetning / Date: 2011.03.03
 Hannab / Designed: HS
 Tekn / Drawn: ÁFV
 Verkið / Supplier: HRV
 Tekn.nr.verkiska / Supplier drw.no: IDP-410-CA-015-274
 Sömbúikt / Approved: NI
 Hluti af: / Part of:

IPU 410 - RECTIFIER BUILDINGS
 A5/S1
 PRECAST ELEMENTS
 REINFORCEMENT
RioTinto Alcan
 ISAL Yfirland og aðeð, doops / ISAL Checked, date ISAL Samþykkt, doops / ISAL Approval, date

| | | |
|---------------------------------|-----------|----------------|
| Flokkur nr.: | Blað nr.: | Næsta bl. nr.: |
| Kostn.nr.-Cana. / Bón.nr.-Eg.no | AKS | Breyt./Rev. |
| 4011 | UB01 | A |
| 251274 | | |