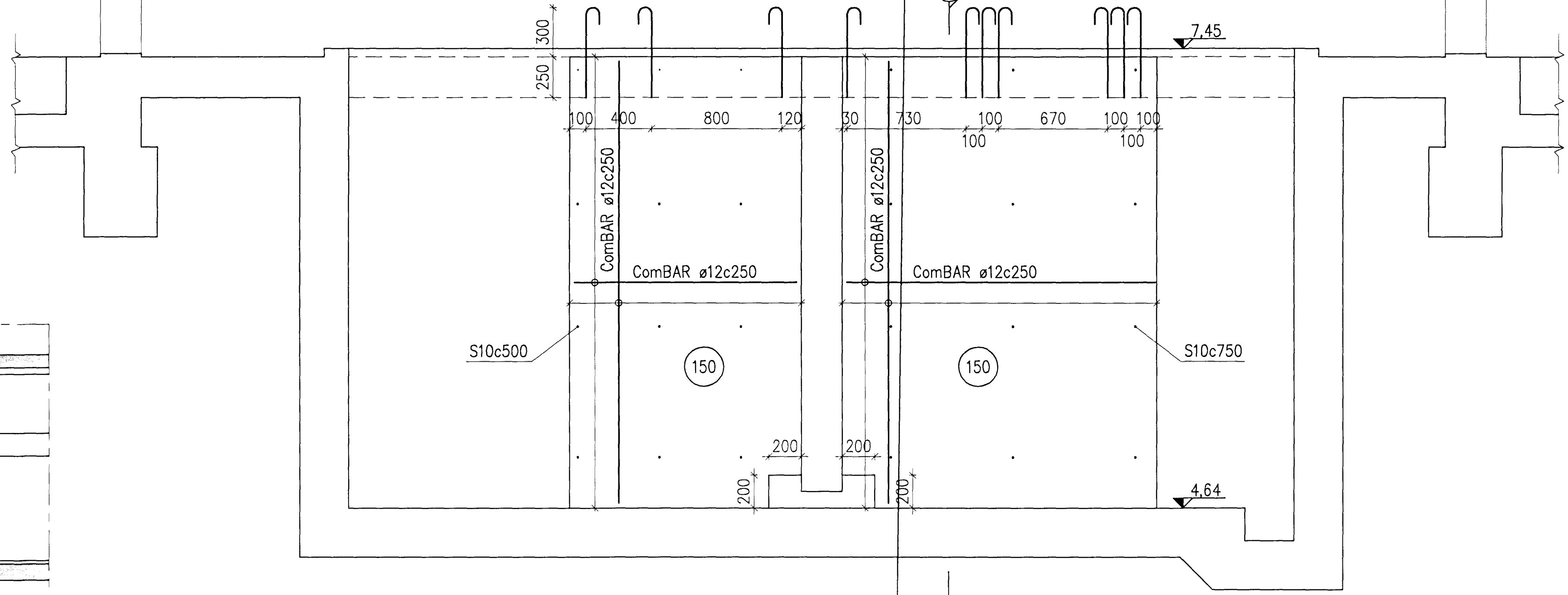


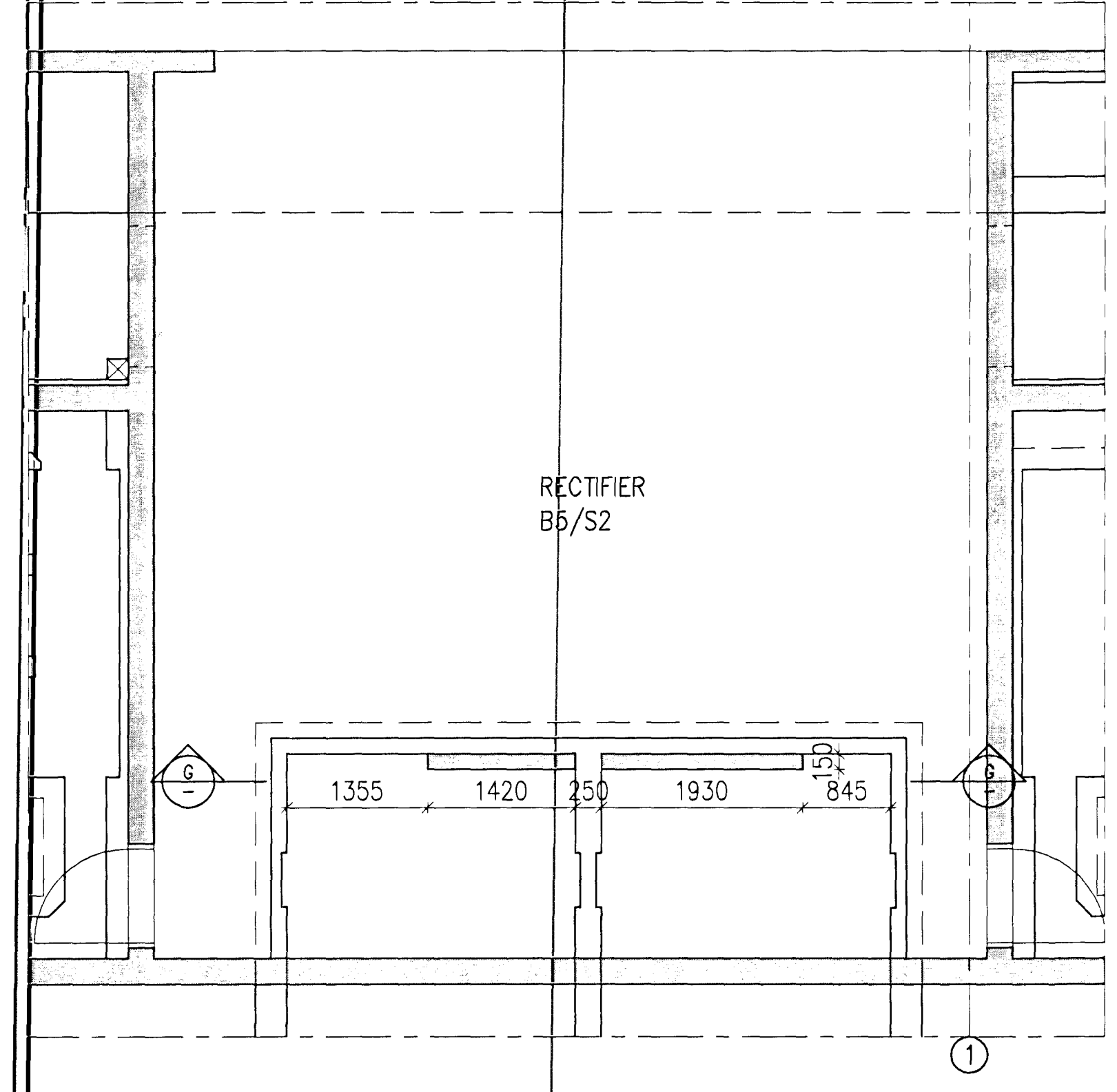
Samþykkt bann
 01 OCT 2012
 Byggingafulltrúinn í Hafnarvík
 F.h. Sigurður Steinar Jónsson

Nick Indriðsson
 Kt. 181144-3949
 NI

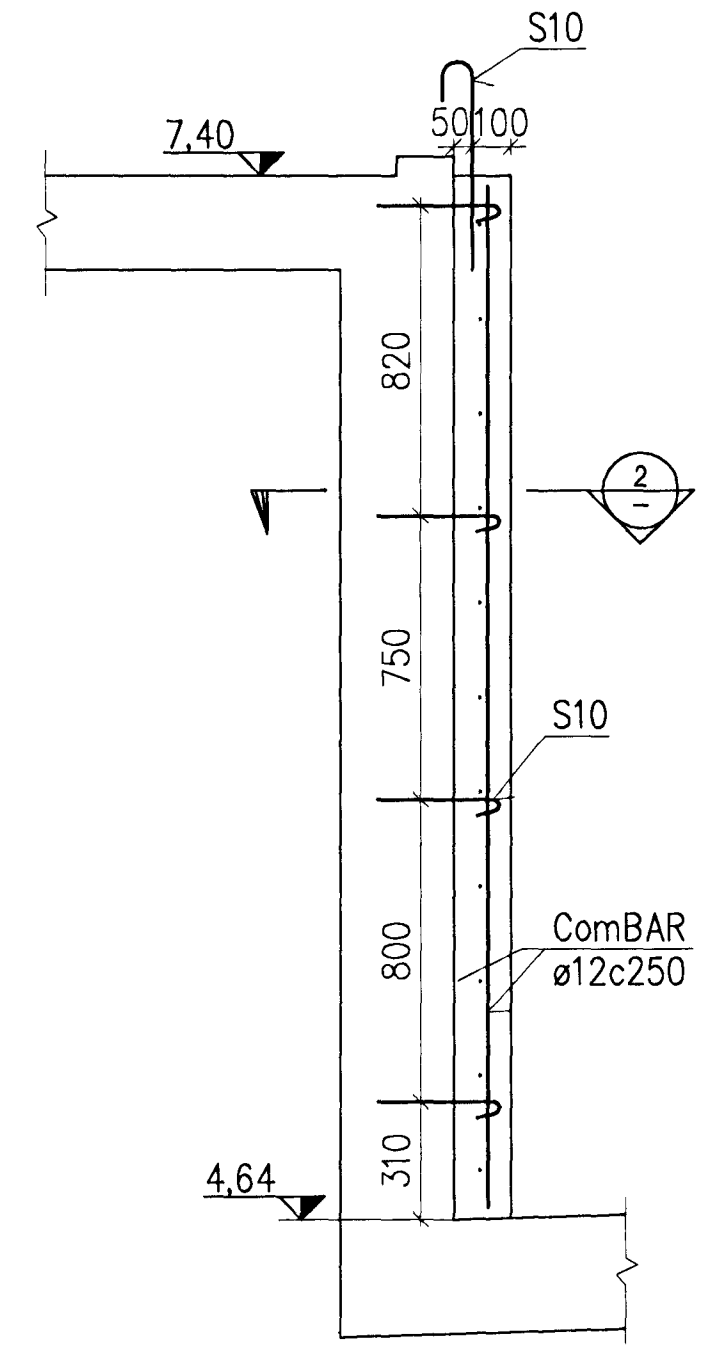
G
331 SIDE VIEW, 1:20



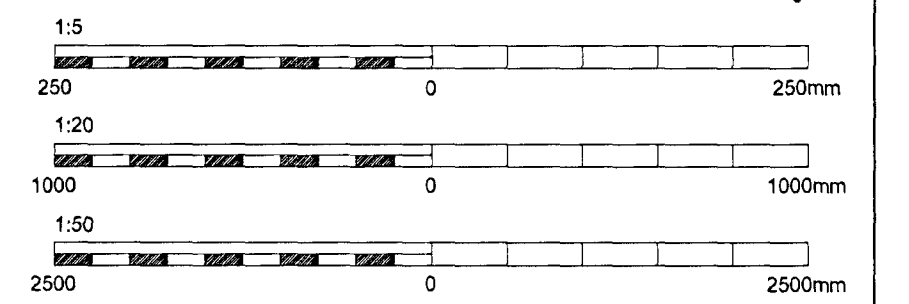
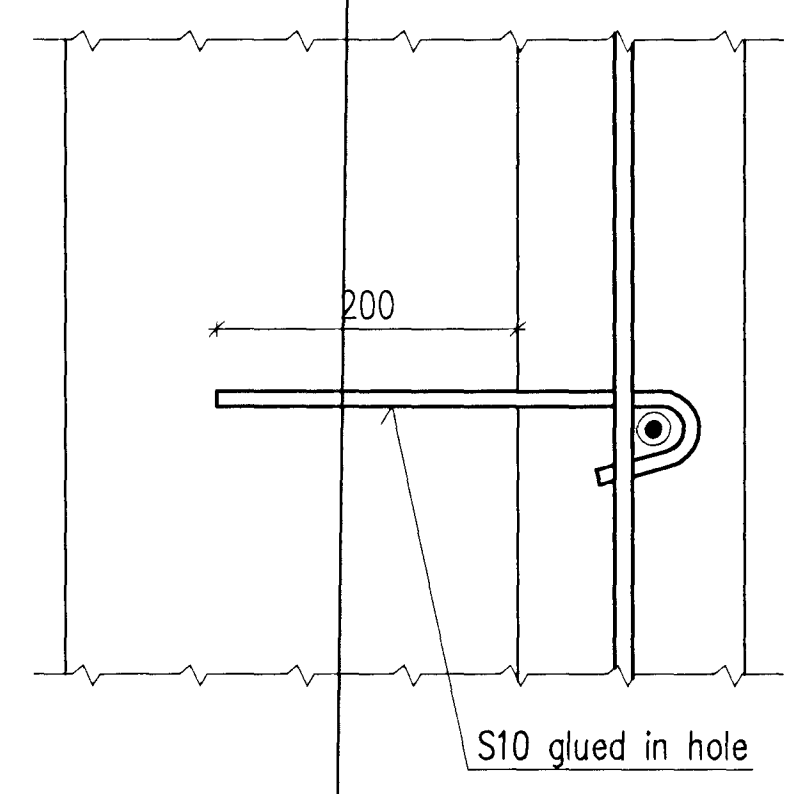
PLAN VIEW, 1:50



1 SECTION, 1:20



2 SECTION, 1:5



Skýringar:
 Legend:
GENERAL NOTES:
 Also see drw. IDP-410-CA-015-030
 Concrete: C30/37:XF3-32
 Reinforcement:
 ComBAR are glass-fibre Reinforced Plastic Reinforcement.
 Ultimate tensile strength = 1000 MPa.

C:\IDP\01\IDP\400 - Reduction\410 Substation\Drawings\Civil\IDP-410-CA-015-250.dwg

Fig. nr	Rev. no	Description	Dagsetning	Date	Hor./Tav	Des./Drw	Yfir	Old	Notk heim	Notk heim	Notk heim
3		Record drawing	2012.09.12		HS	NI	BS				

This drawing is the property of Rio Tinto Alcan Iceland Ltd. and handed out for personal use only. It may neither be copied nor made available to others without permission of Rio Tinto Alcan Iceland Ltd. The receiver is liable for any misuse.		Dagsetning / Date 2012.01.20	
Formal: A1 Mkv. Scale: 1:5/20/50 Dimensions without tolerances according to ISO 2768-1 medium.		Hannað / Designed HS	
Tekn.númer / Supplier IDP-410-CA-015-250		Tegn. / Drawn LDB	
Sambær / Approved NI		Varkjafi / Supplier HRV	
Hluti af / Part of:		Yfir / Chkd NI	

IPU 410 - RECTIFIER BUILDINGS BUSBAR TUNNEL BETWEEN PL2 & PL3 CORRECTED LOCATION OF ENDWALL		Flokkur nr.: Blað nr.: Næsta bl. nr.: 4011 16962	
Tegn. nr. / Supplier IDP-410-CA-015-250		Kostn. nr. - Dæmi / Bón. nr. - Eigna AKS UB23	
Tegn. nr. / Supplier IDP-410-CA-015-250		Tegn. nr. / Dæmi of ISAL / Breyt./Rev. 251257 A	
ISAL Yfirfarið og skráð, dags / ISAL Checked, date		ISAL Samþykkt, dags / ISAL Approved, date	



RioTintoAlcan