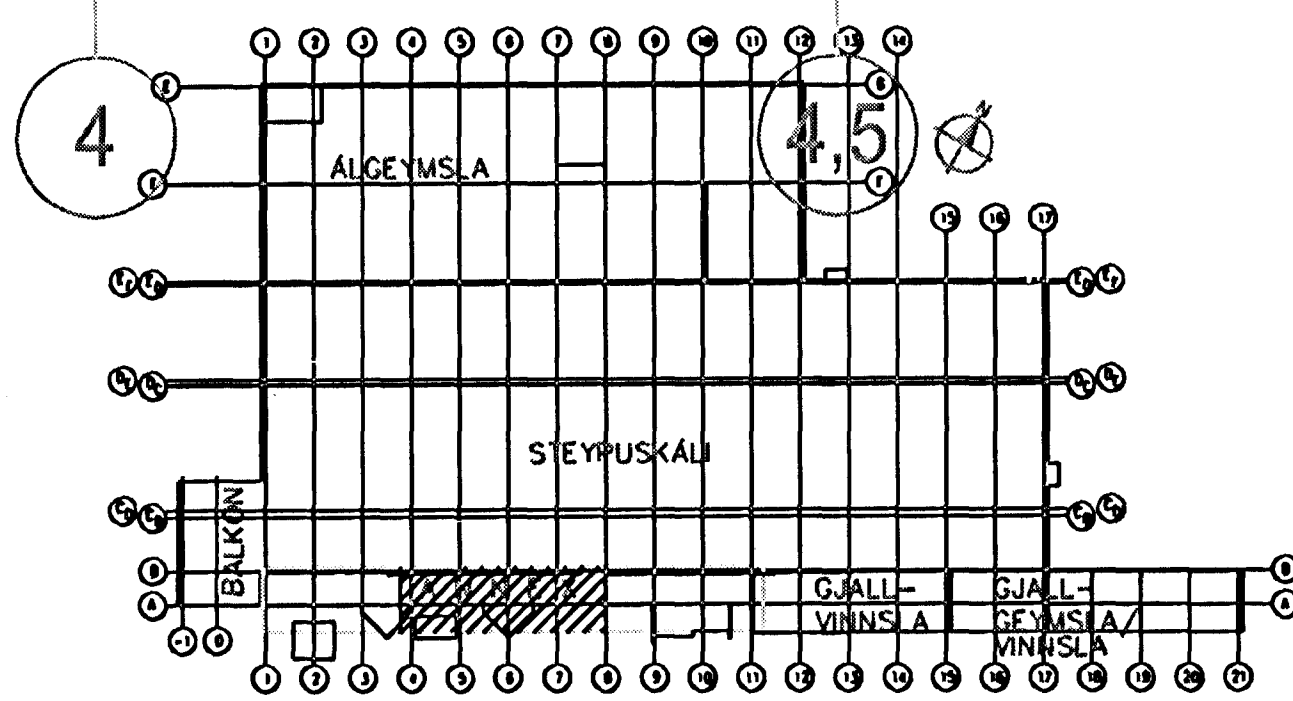


LYKILMYND



— NYJUR LOFTSTOKKAR
 — STOKKAR NIDURRIF
 — GAMLIR STOKKAR

RISTASKRA:

RIST NR.	LOFTMAGN M ³ /T	GERD
R1	420	TST 250+PER 200/250
R2	400	TST 250+PER 200/250
R3	270	TST 250+PER 200/250
R4	250	TST 250+PER 200/250
R5	300	TST 250+PER 200/250
R01	900	AC123B 300X300
R02	150	EFF+RF #125
R03	200	IRISLOKA #160
R04	100	IRISLOKA #125
R05	50	EFF+RF #100
R06	400	AC123B 250X250 +BOX
R07	350	TST 250
R08	200	AC123B 250X250 + BOX
R09	350	AC123B 250X250 + BOX
R10	250	AC123B 250X250 + BOX

Sampykkt þingi
 3. OKT. 2003
 Byggingafrádráttur / Framfarir
 Fh. Sigurbjartur Halldórsson

Skýringar:
 Explanations:

rj **RJ Verkfæðingur**
 Stangarhl 1a, 110 Reykjavík
 Sími: 567-8030, Fax: 567-8015

Rafn Jónsson verkfræðingur
 Herdís Rafnsdóttir verkfræðingur

1	Frámhvarfdeikning	31.01.03			
Breyt. / Rev.	Bræyting / Revision	Dagur / Date	Samb. / Approved	Wsk. / Released	

Tek. teikningar nr. ISAL
 Ref. drawing no. of ISAL

Samsæt. teikningar nr. ISAL
 Assembly drawing no. of ISAL

This drawing is the property of the Alcon Iceland Ltd. and handed out for personal use only. It may neither be copied nor made available to others without permission of the Alcon Iceland Ltd. The receiver is liable for any misuse.

Fjöldi stúka / Number of pieces	Stærð / Size	Alhúsgæðingur / Remarks
IV III II I	1:50	

Steypuskóli
 ANNEX styrkingar / stökun
 3.Hed Loftræsting

RJ Verkfæðingur ehf
 21101.07

ALCON PRIMARY METAL EUROPE
 166281 1