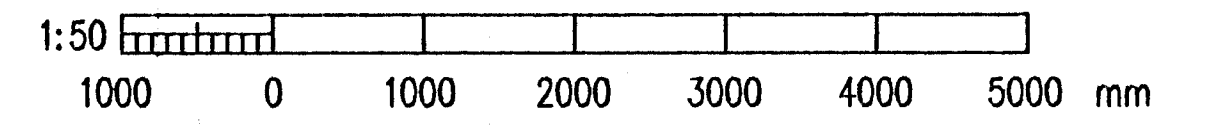
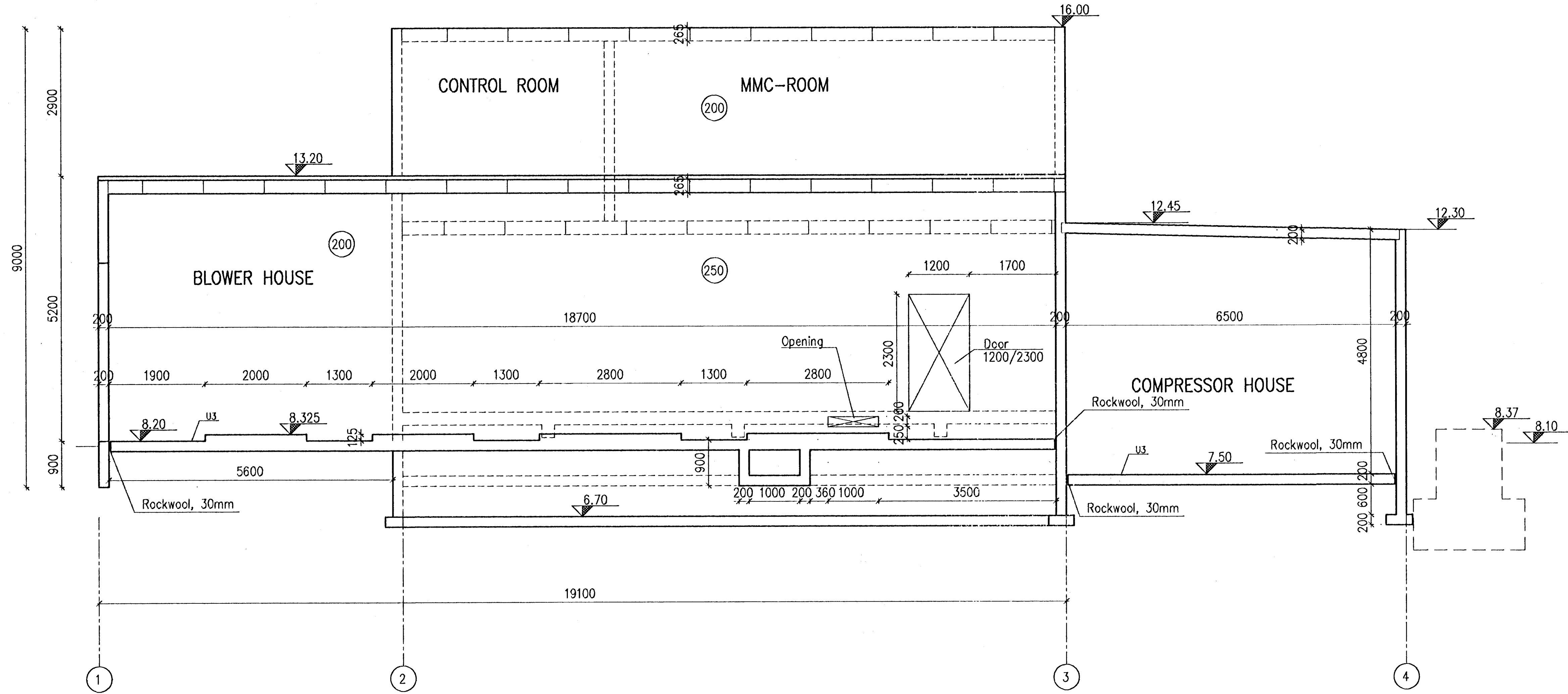


DD
112



CONCRETE: C30/37-38-S2

Dick Holm

VST CONSULTING ENGINEERS Ltd. Armula 4 108 Reykjavik Iceland Tel: +354 569 5000 Fax: +354 569 5010		95.120 - 26.118	
ICELANDIC ALUMINIUM COMPANY LTD.	DRAWN 98.04.10 SGI APPROVED 98.04.10 FGS PROCESS 98.04.10 NI PROJECT 98.04.10 NI SCALE 1:50 PERSAT A1	SUBSTATION 120 CONCRETE WORK SECTION DD FORMWORK	
ALUSUISSE ALESA	ALESA ENGINEERING LTD. ZURICH SWITZERLAND	79000-35418	
ISAL	ICELANDIC ALUMINIUM CO. LTD	188-418	

REV. NO.	DATE	REVISION	BY	APP.	REV. NO.	DATE	REVISION	BY	APP.	NOTES	REFERENCE DRAWING	DRAWING NUMBER
1	1998.07.18	APPROVED FOR CONSTRUCTION	FGS	N.I.								

This drawing is our property and given for personal use only. It may not be copied or made available to others without our permission. The receiver is responsible for any misuse.