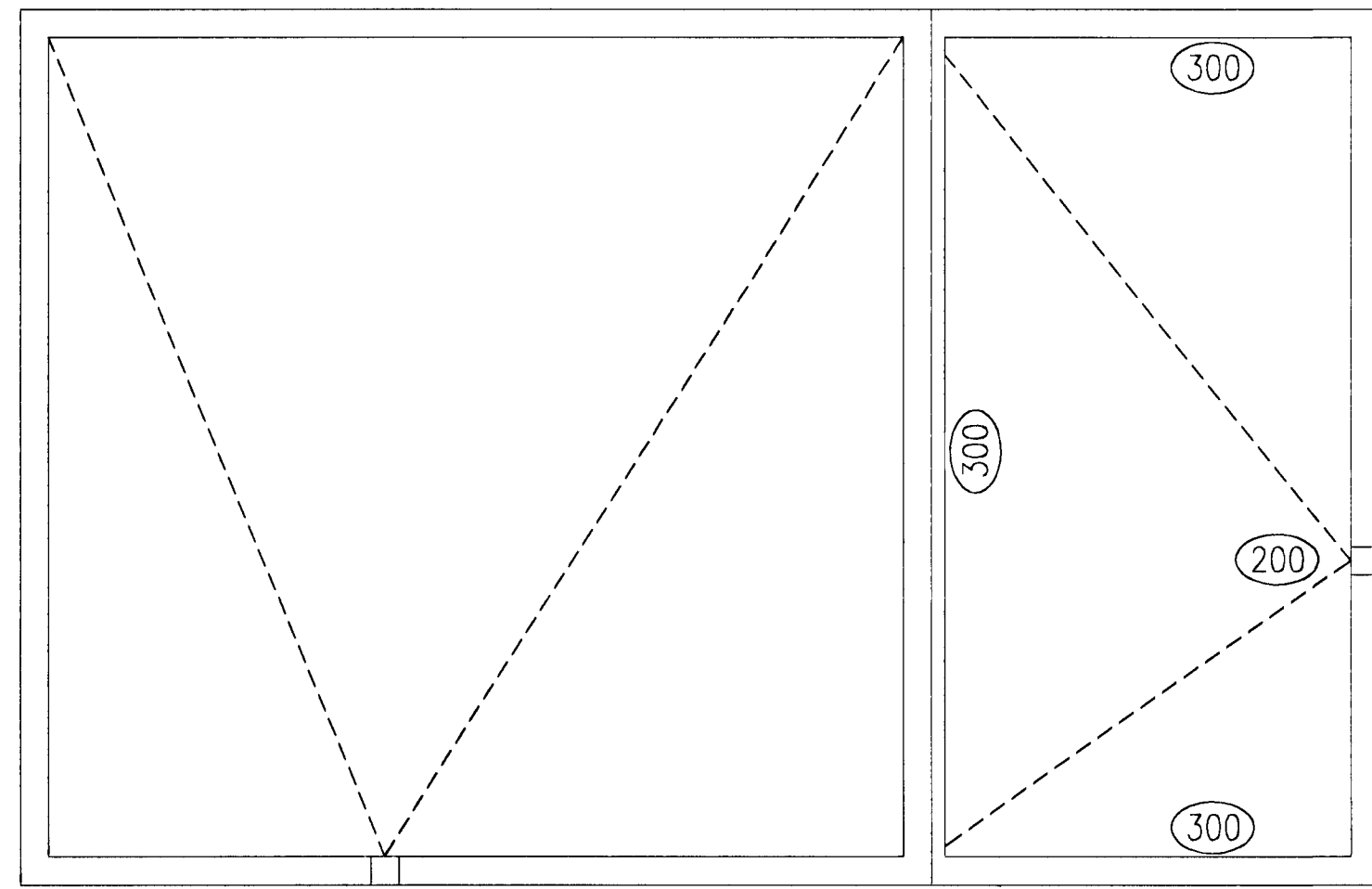
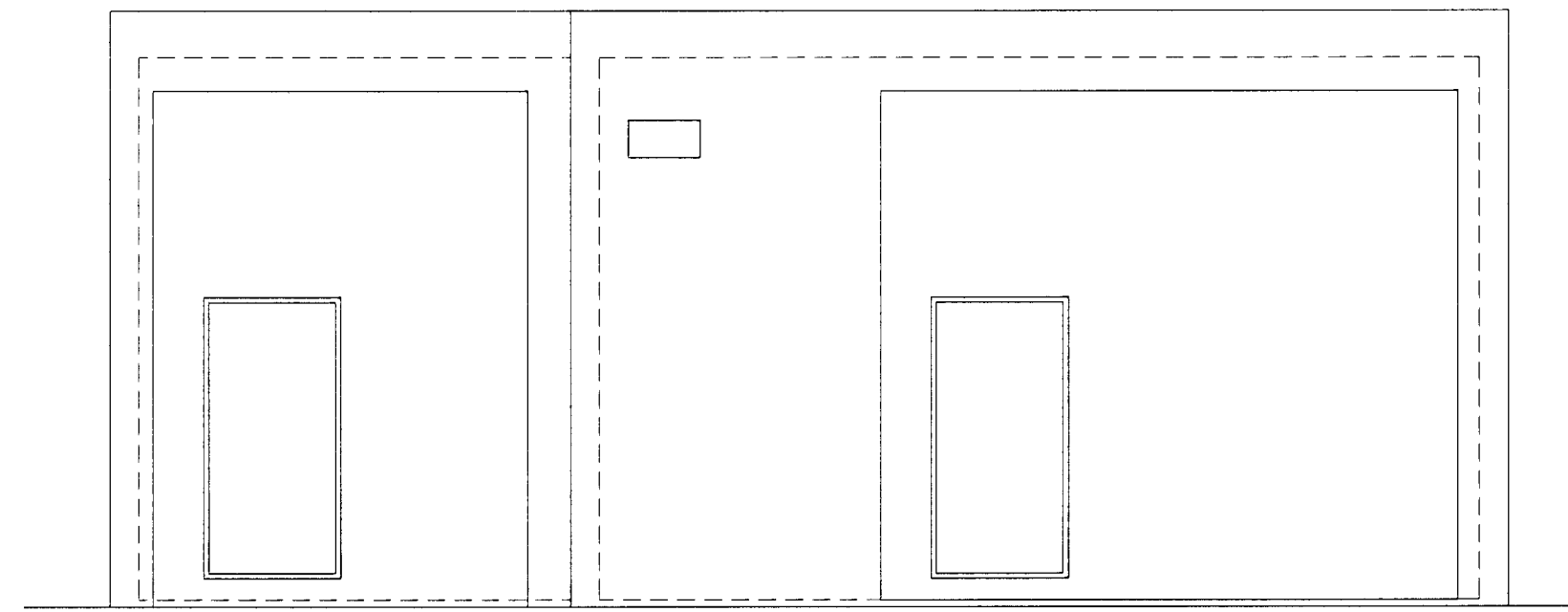


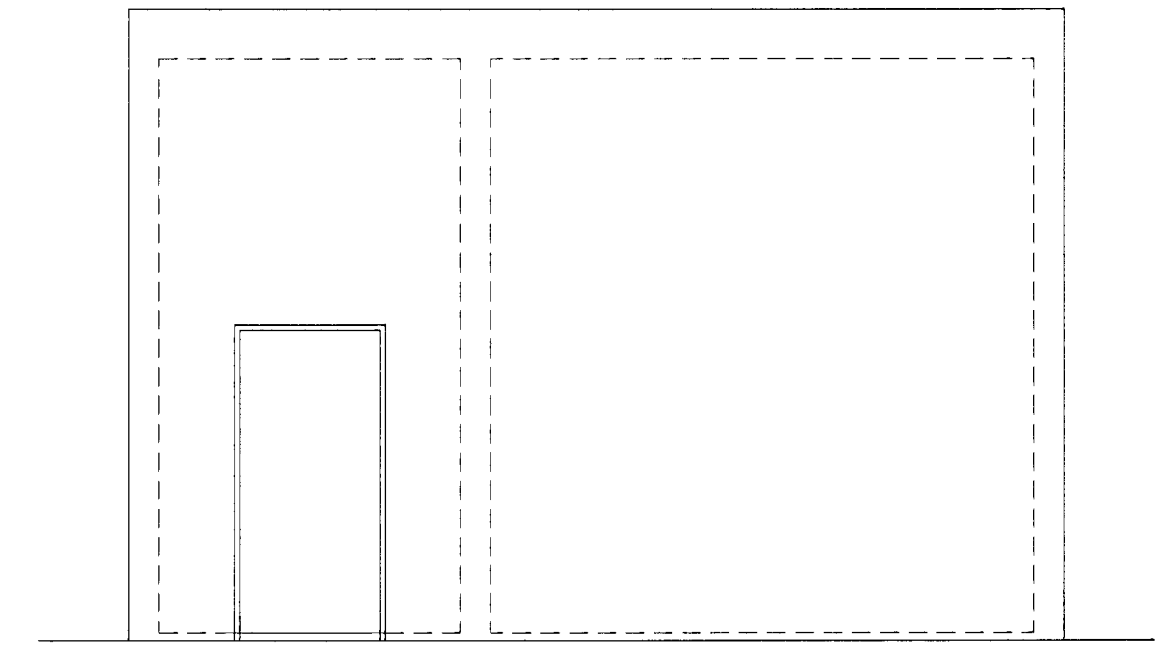
ÞAKPLATA



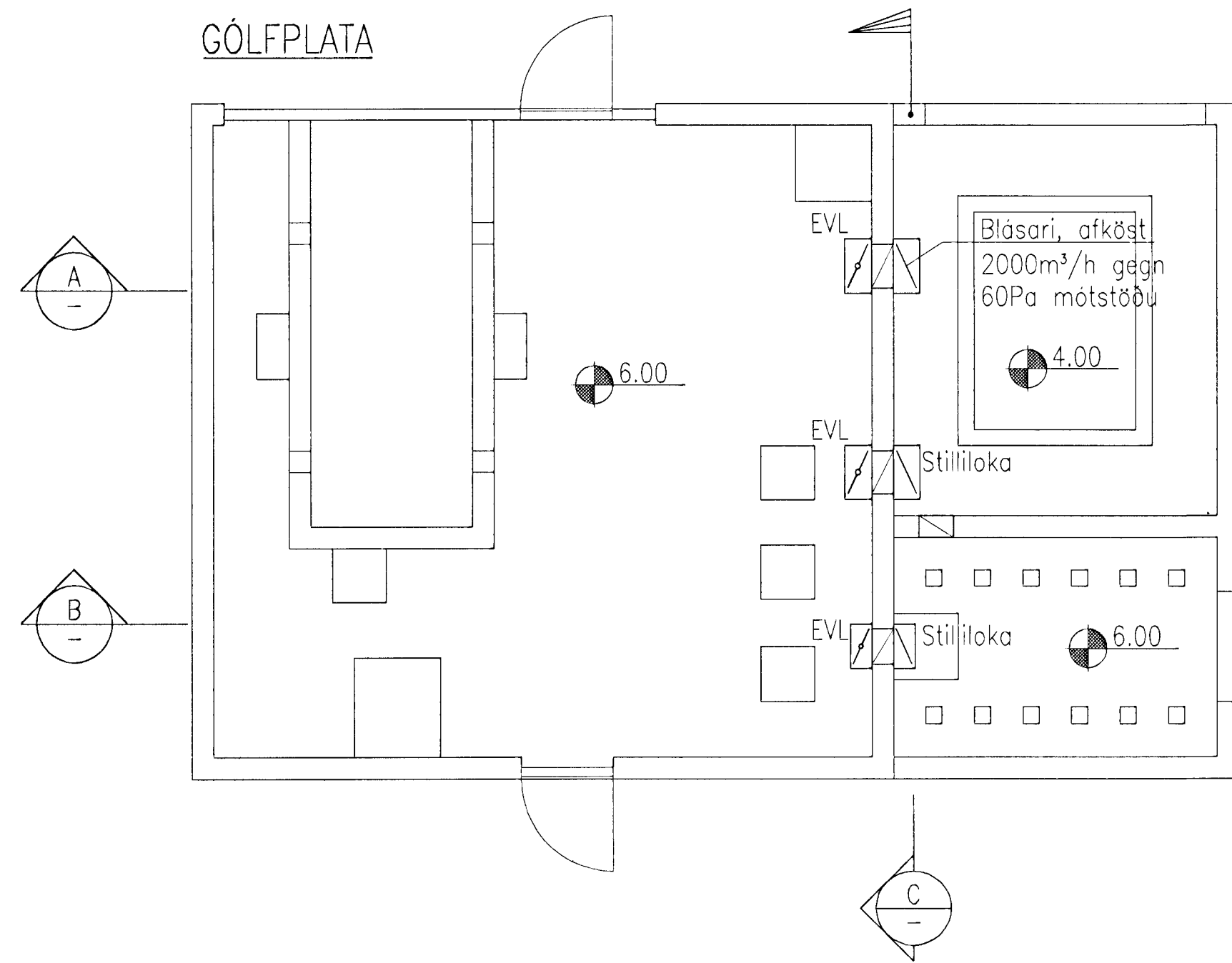
AUSTUR



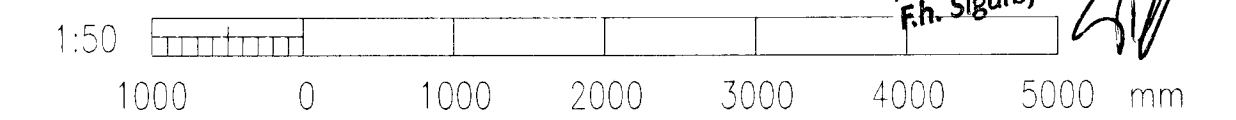
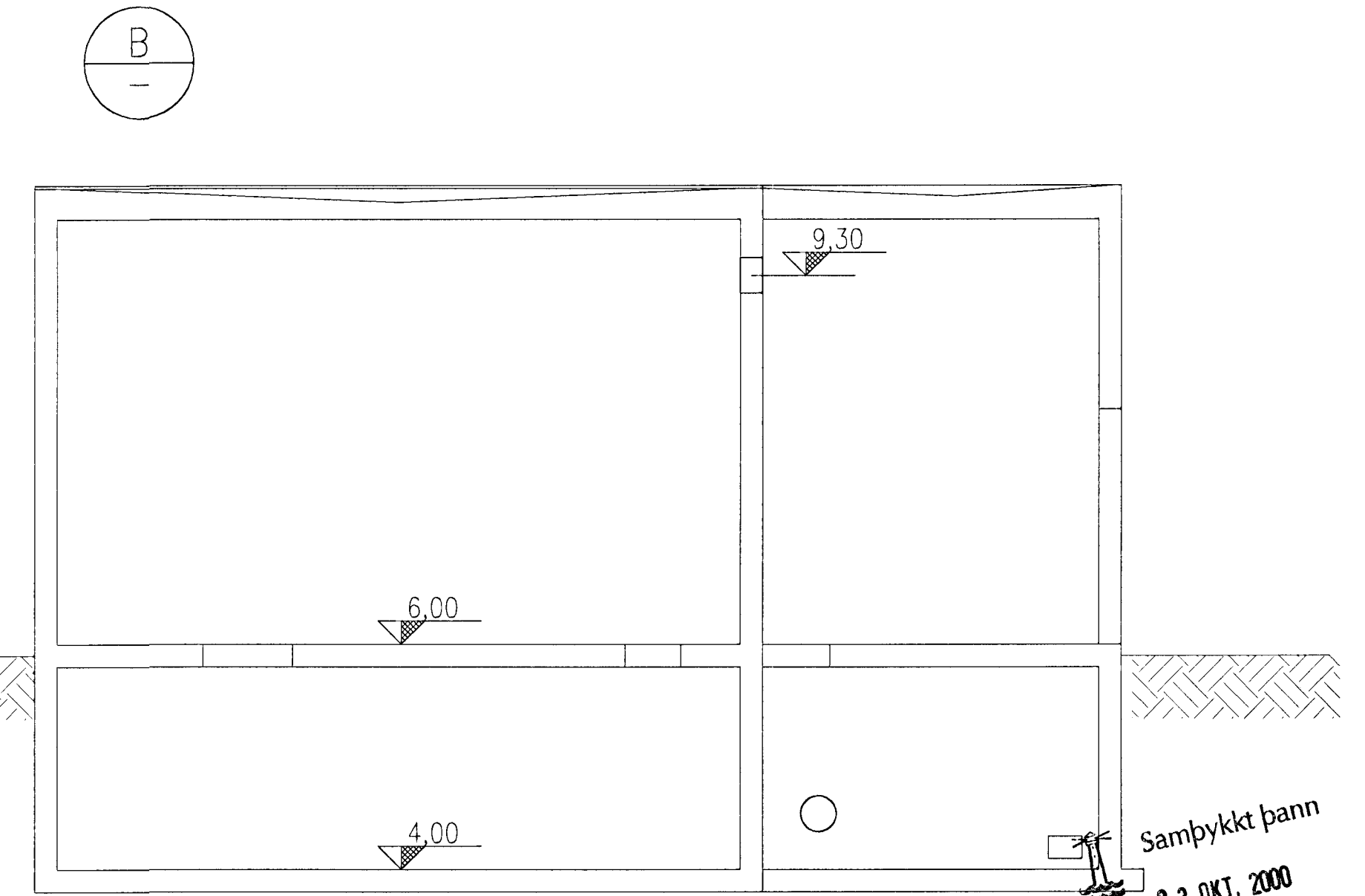
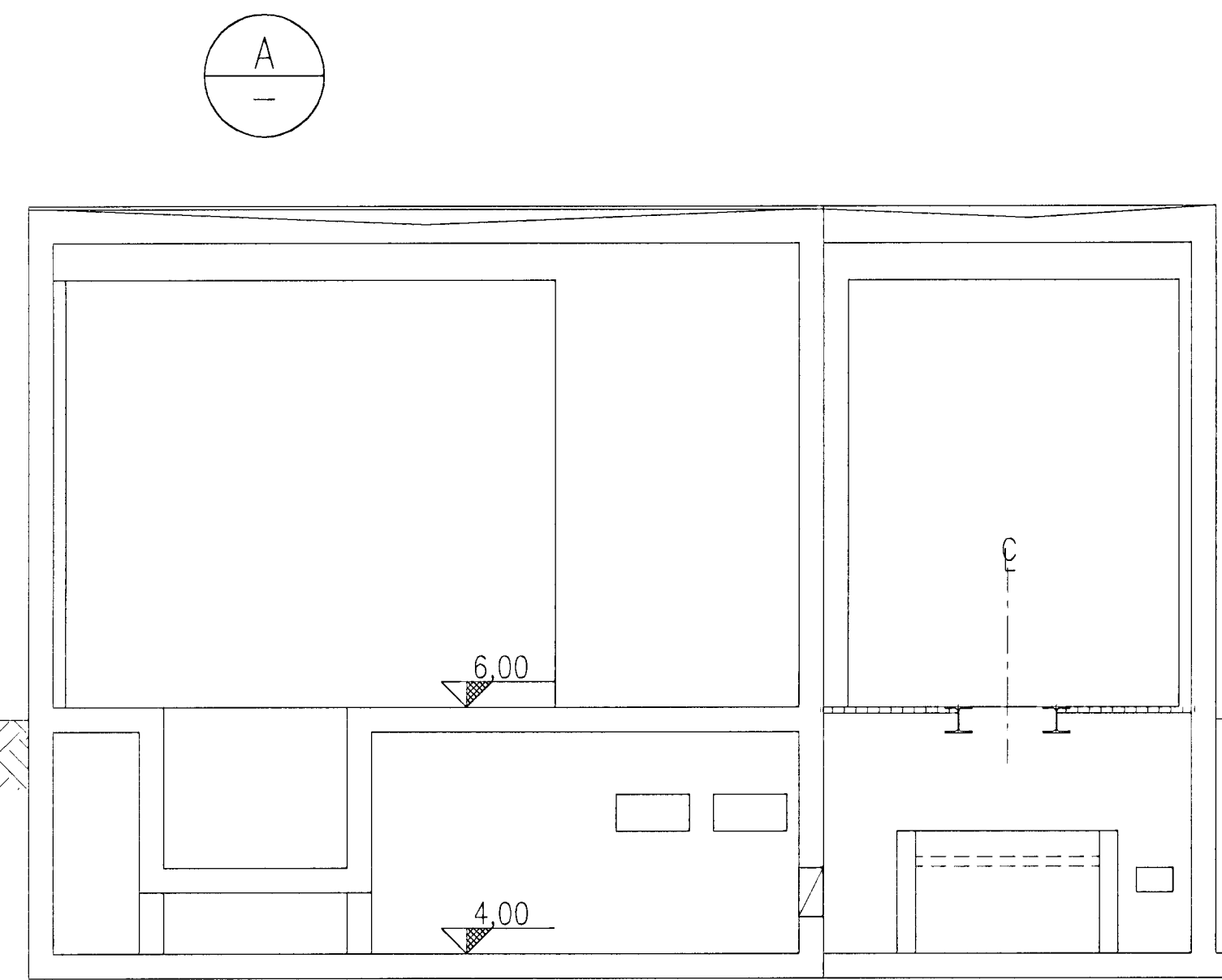
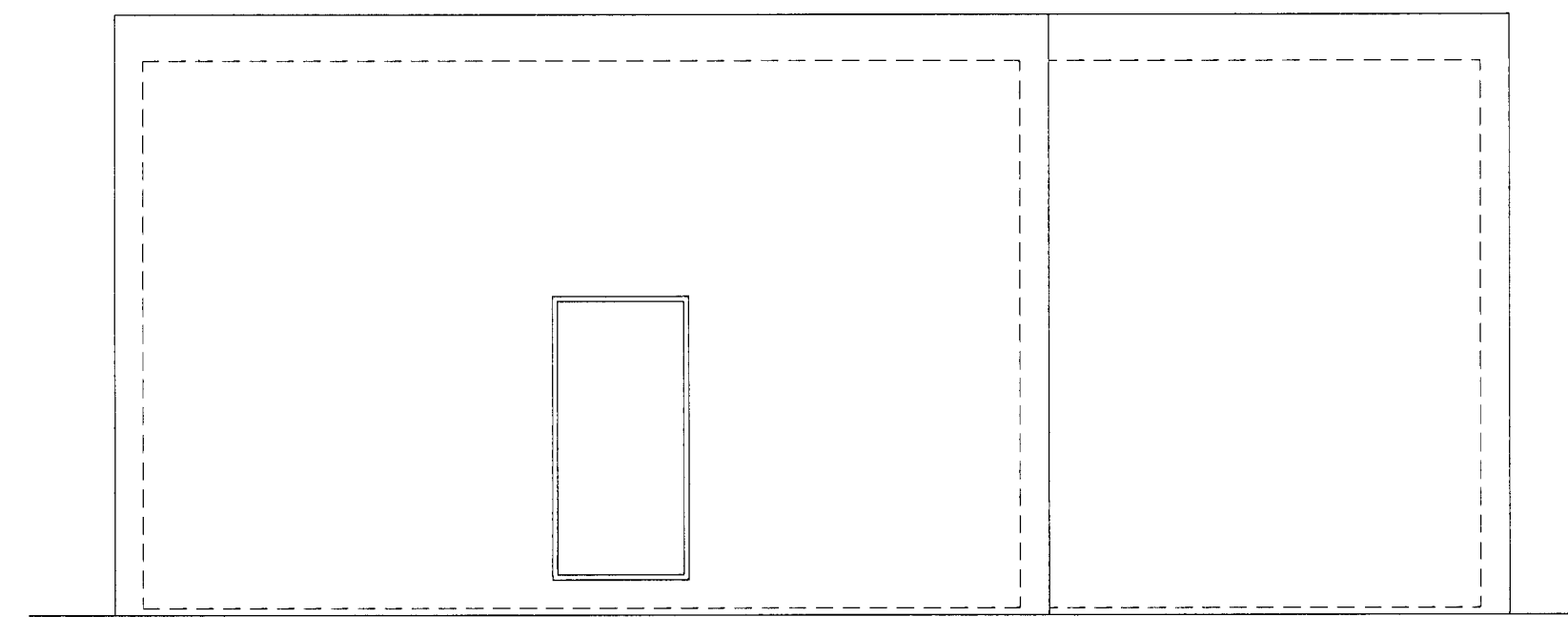
SUDUR



GÓLFPLATA



VESTUR



Samþykkt þann  
23 OKT. 2000  
Byggingafulltrúinn í Hafnarfirði  
Fh. Sigurbjartur Hallgrímsson

Skýringar:  
Explanations:

This drawing is the property of the ICELANDIC ALUMINIUM CO. LTD. and handed out for personal use only. It may neither be copied nor made available to others without permission of the ICELANDIC ALUMINIUM CO. LTD. The receiver is liable for any misuse.		Fjöldi stúkkja Number of pieces	Hiður Object	Atrið Item	Efni Material	eo. stk Weight (kg)	totalt f. heild Total weight	Athugasemdir Remarks
		IV	DREIFISTÖÐ 71					Málsvæði Scale 1:50
			STÆKKUN					Stærð frumtekn. Form of org. A1
			LOFTRÆSING					CCno.-Eq.týpa-Eq.no. 4011 BA 1190
			Verkfæðistofa Sigurðar Thoroddsen hf. Árni 4, 108 Reykjavík Sími: 588 5000 Fax: 588 5015		99.110-21.15		Drögn. af húsi / f. hönnu. veldis 99.110-21.15	
			algroup aluuisse primary materials		Is-222 hafnarfordur, ísland		Drögn. af húsi / f. hönnu. veldis 165374	
			Teknað / Drawn AS/SHJ JÚL 2000 Yfirfarið / Checked N.I.		Samþykkt / Approved N.I.		Breyt. / Rev.	
Tækniteikningar nr. ISAL Ref. drawing no. of ISAL		Samsetningartekningar nr. ISAL Assembly drawing no. of ISAL		Dregt. / Rev. Breyting / Revision Dags / Date Gert af / Made by Samþykkt / Approved				