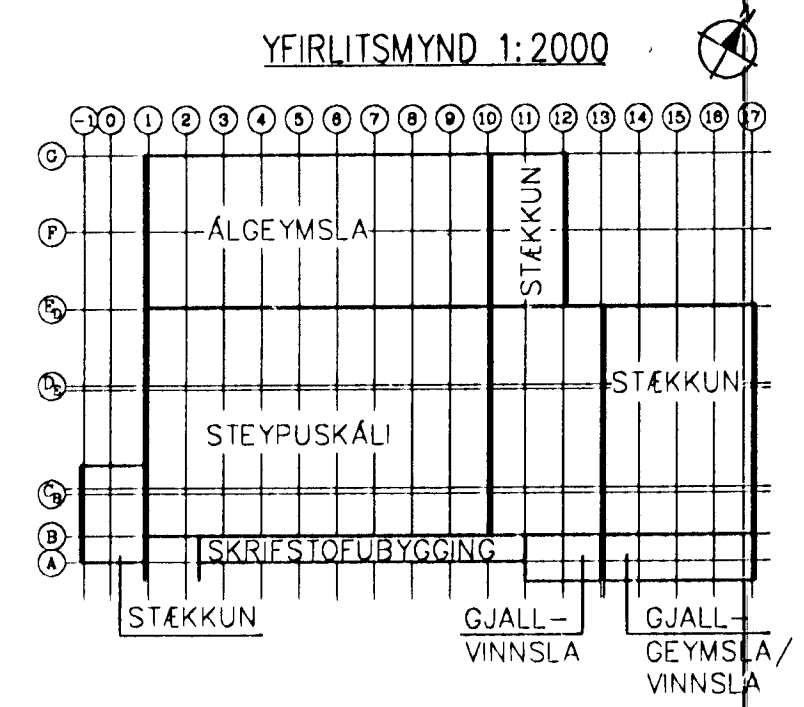


STÆKKUN STEYPUKÁLA
1996

KJALLARI	1080 M ²
AÐALHÆÐ	4138 M ²
MILLIHÆÐ	433 M ²



SKÝRINGAR

RÖMINGARLEIÐ →

MERKI ÖTÖNGALEIÐ →

ENGIN NEYÐARLÝSING ER NÓI HÖSNU. KLUNN ER AD BETA ÖR ÞESSU ÖG MÉRKA ÖTÖNGALEIÐ I SAMRÆMI VÖ TEKNIÖNGAR.

REV. NO.	DATE	REVISION	BY	APP.	REV. NO.	DATE	REVISION	BY	APP.	NOTES	REFERENCE DRAWING	DRAWING NUMBER	REVISION
2	29.11.1997	EINS OG BYGGT ER, "AS BUILD"		UH									
1	3.9.1996	STÆKKUN SVALASVÆDIS ÖR 10M I 17M		UH									
0													

This drawing is our property and given for personal use only. It may not be copied or made available to others without our permission. The receiver is responsible for any misuse.	ICELANDIC ALUMINIUM COMPANY LTD.	DRAWN 24.7.1996 HHH APPROVED 24.7.1996 UH PROCESS PROJECT SCALE 1:250 FORMAT A1	STÆKKUN STEYPUKÁLA - BRUNAHÖNNUN GRUNNMYND GRUNNMYND KJALLARA
	ALESA ALUSUISSE ENGINEERING LTD. ZURICH SWITZERLAND	79000-34424	2
VERKFRÆÐISTOFAN ÖNN SF. TÆKNITHÖJUNUSTAN SF.		193.624	B