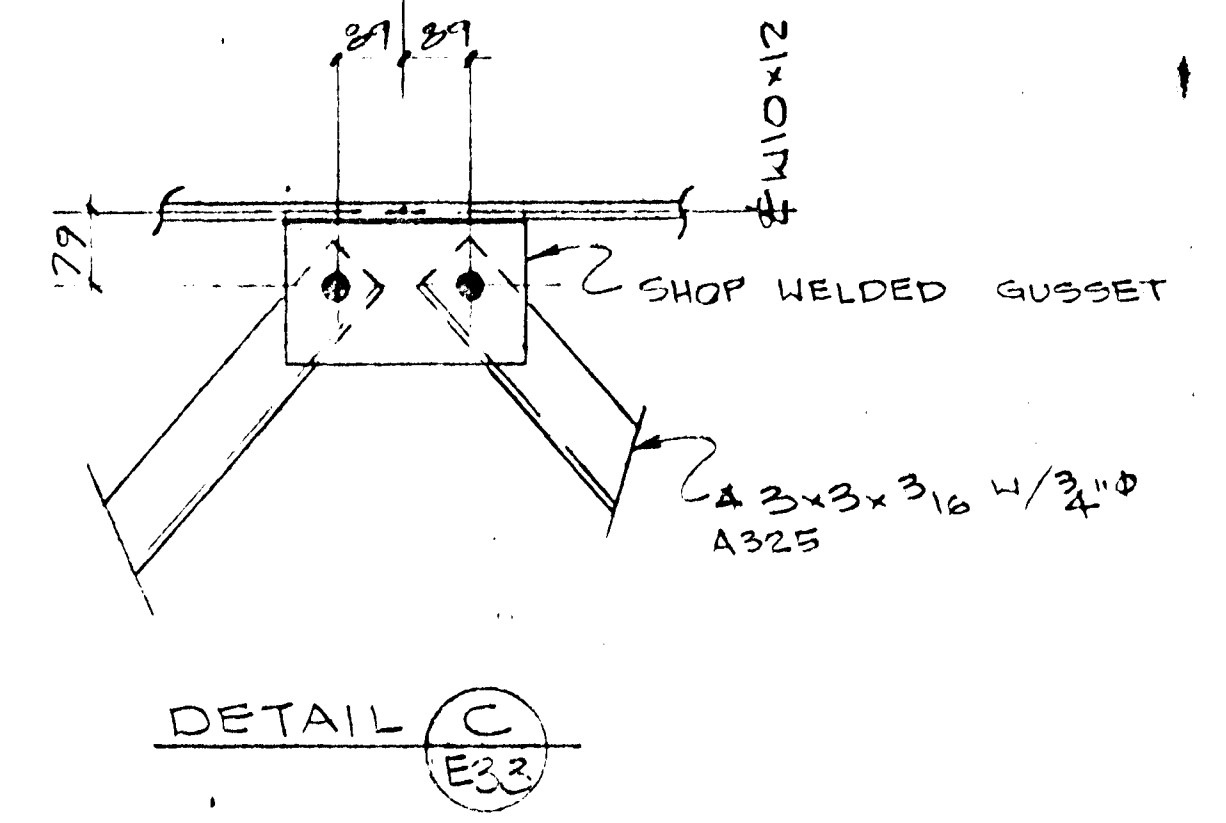
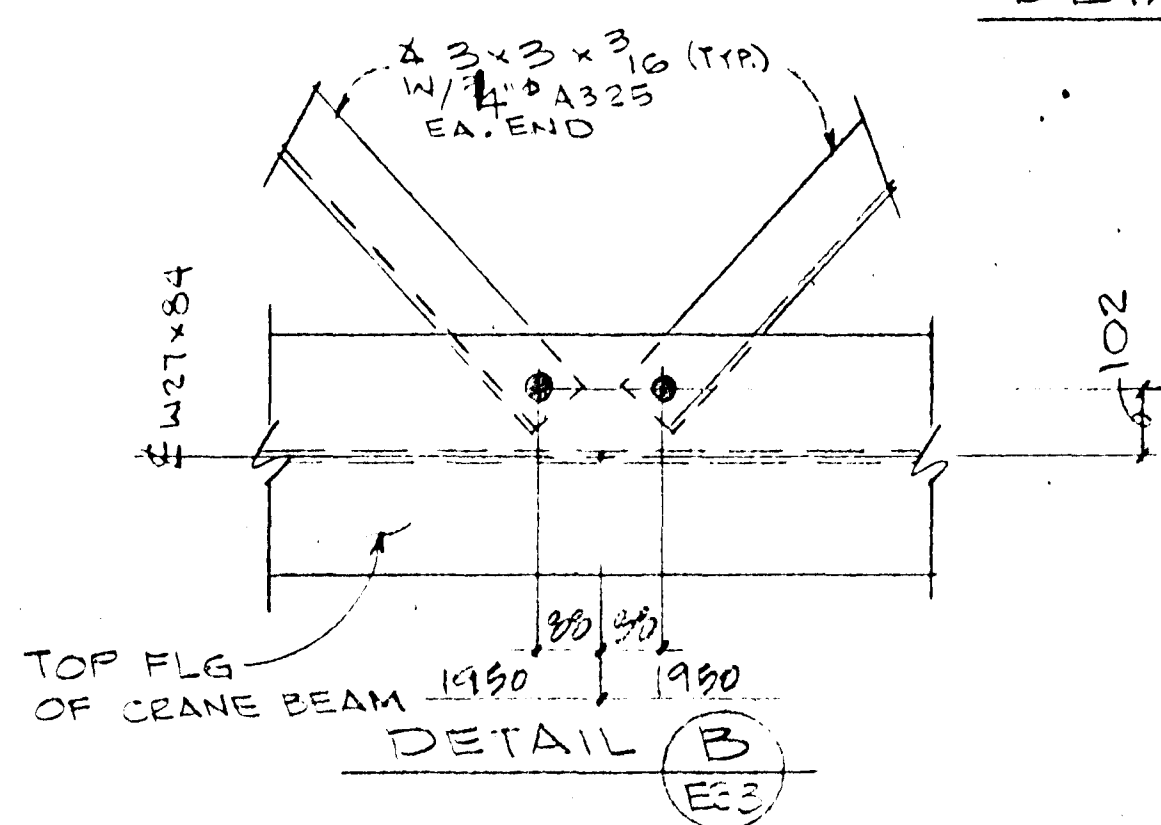
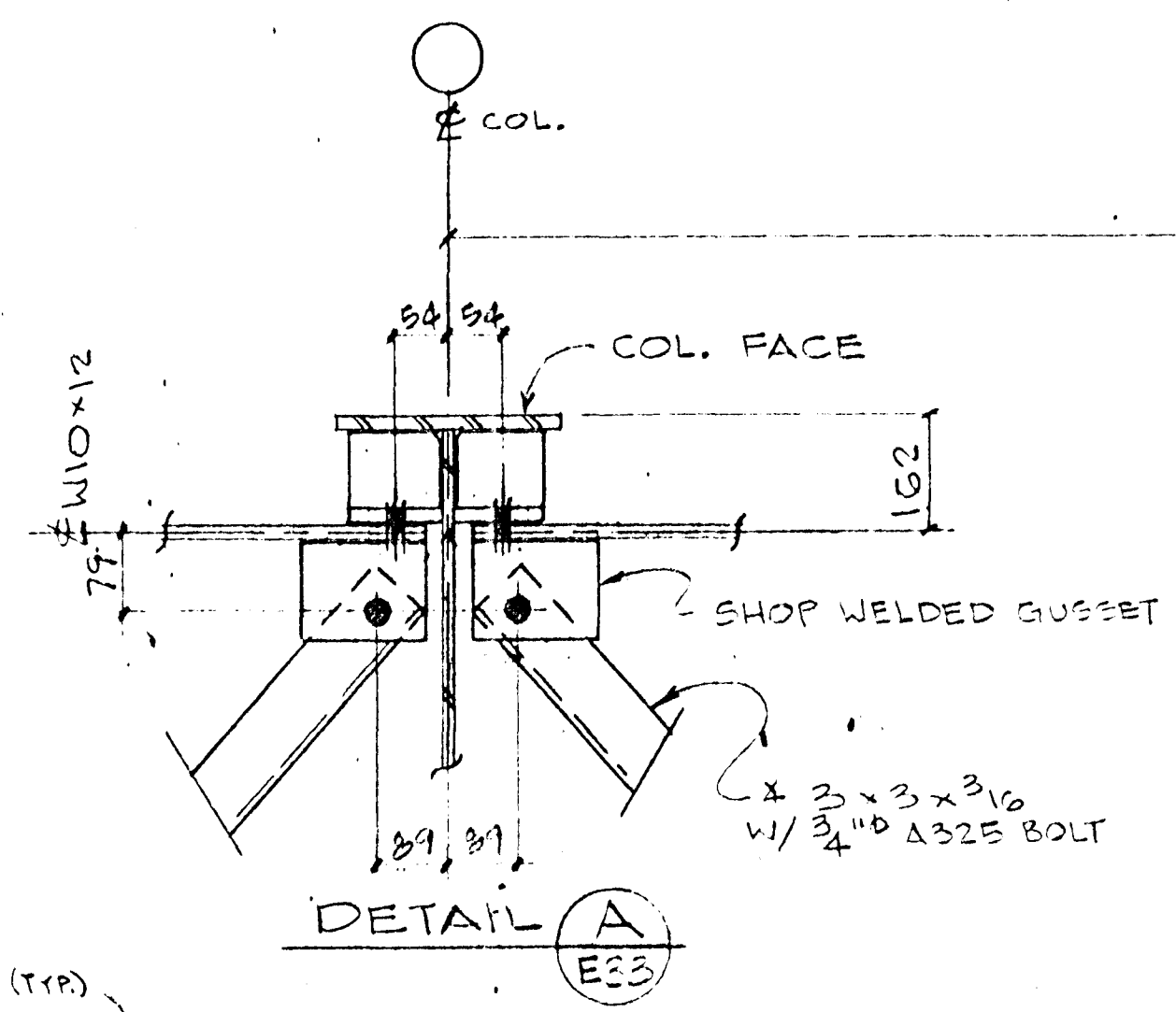
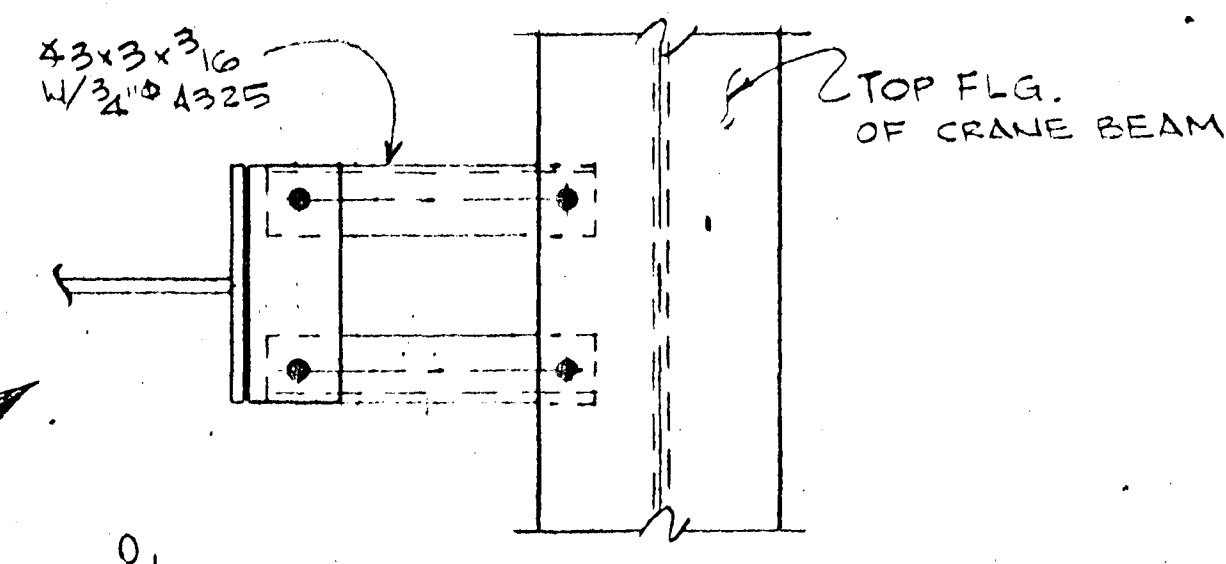
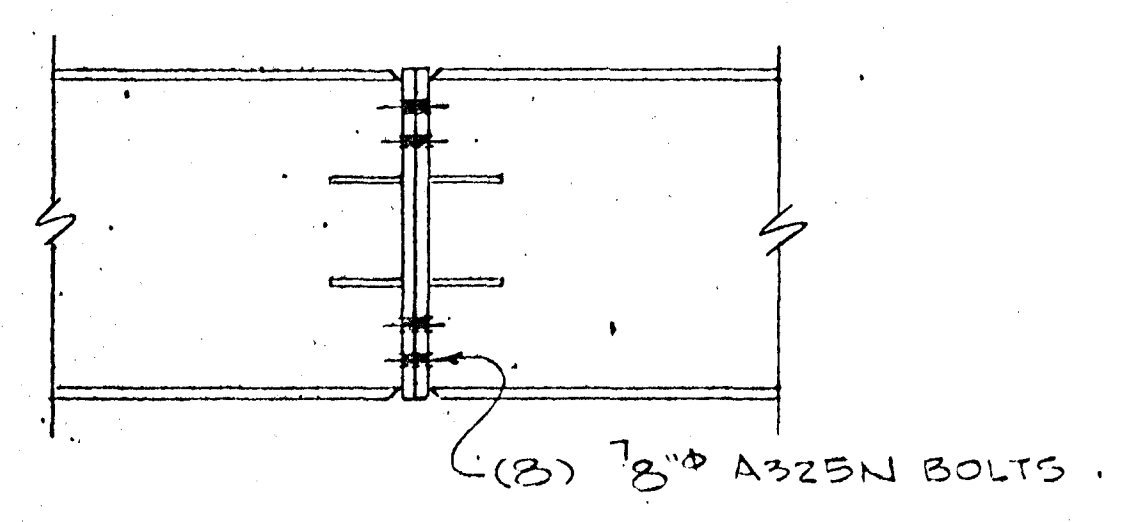
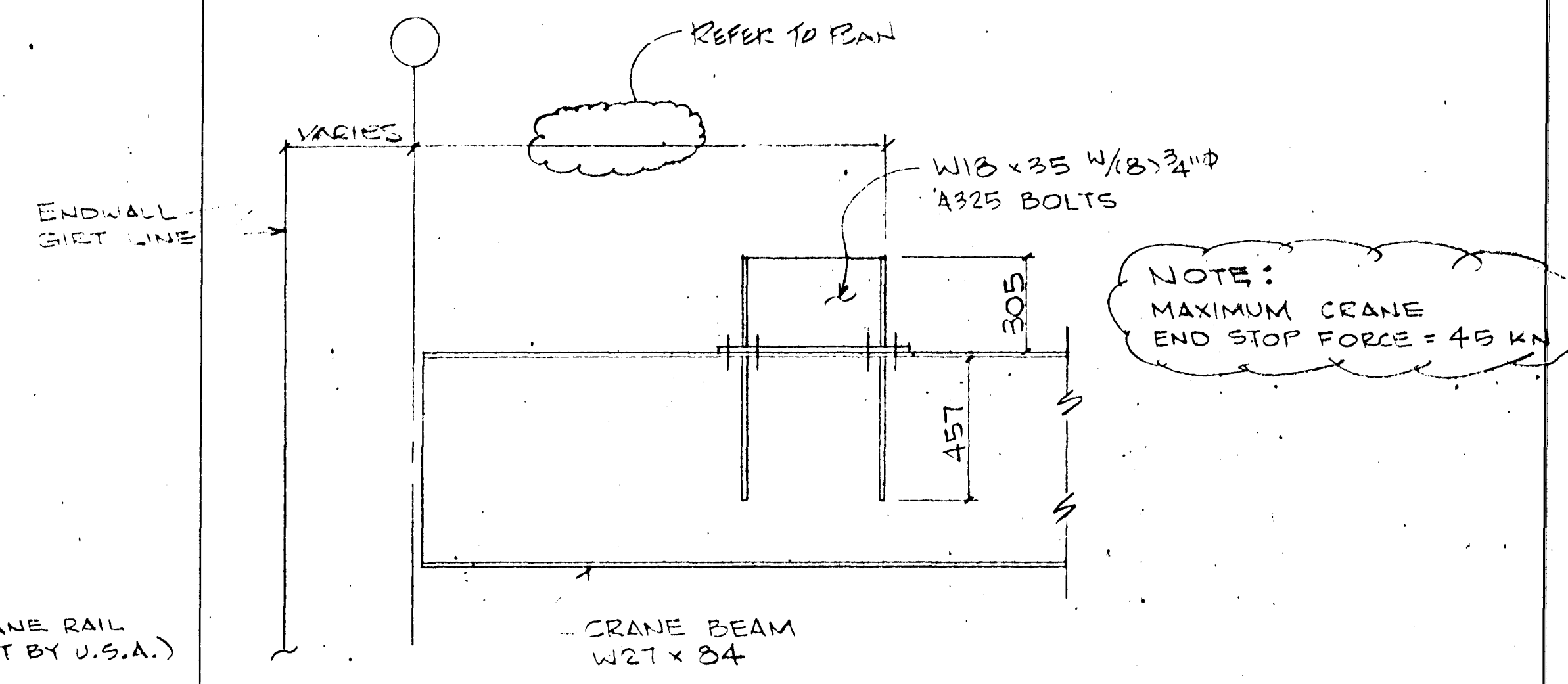


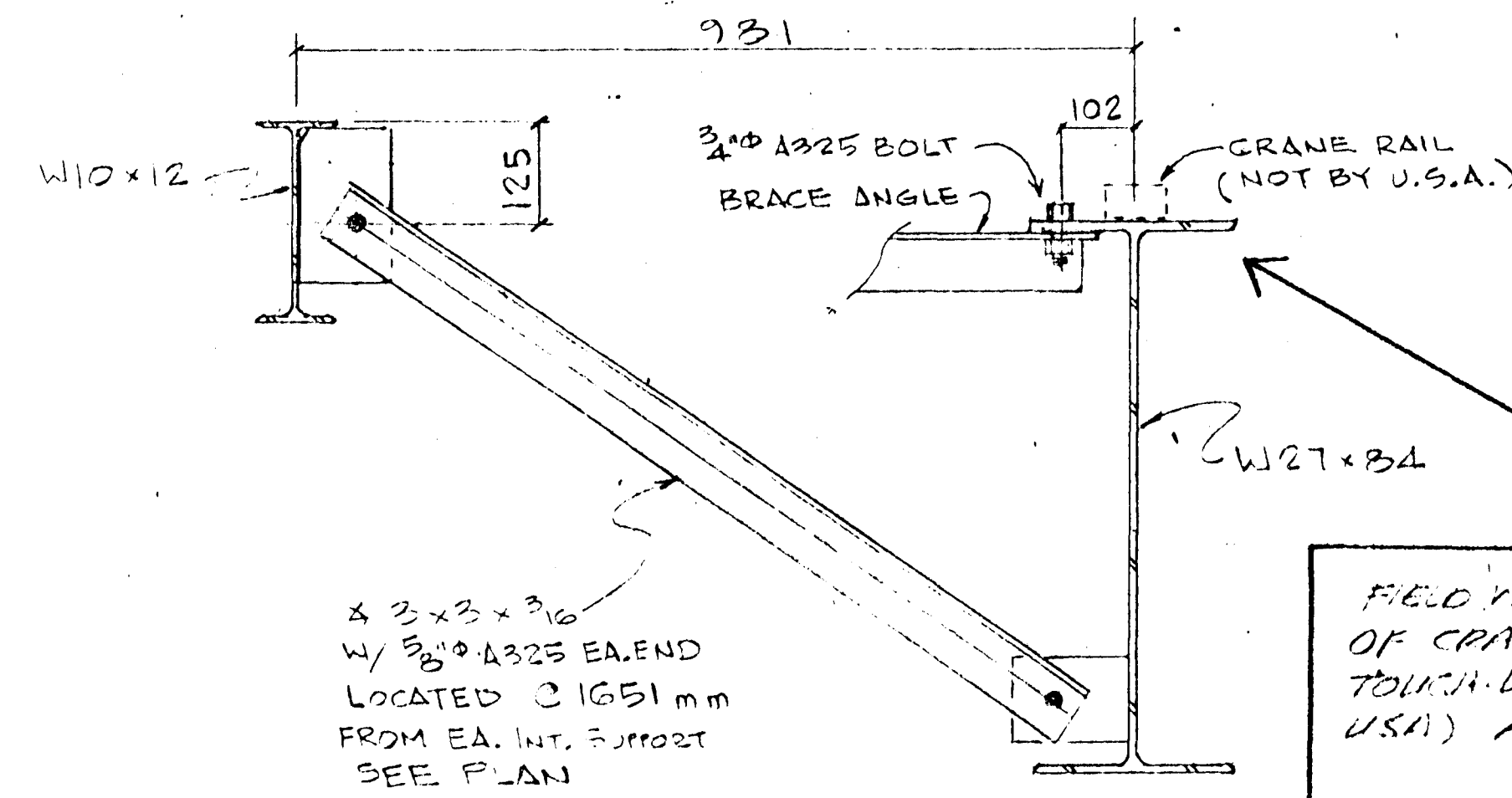
TYP. CRANE BEAM TO COL. DETAIL (D) E33



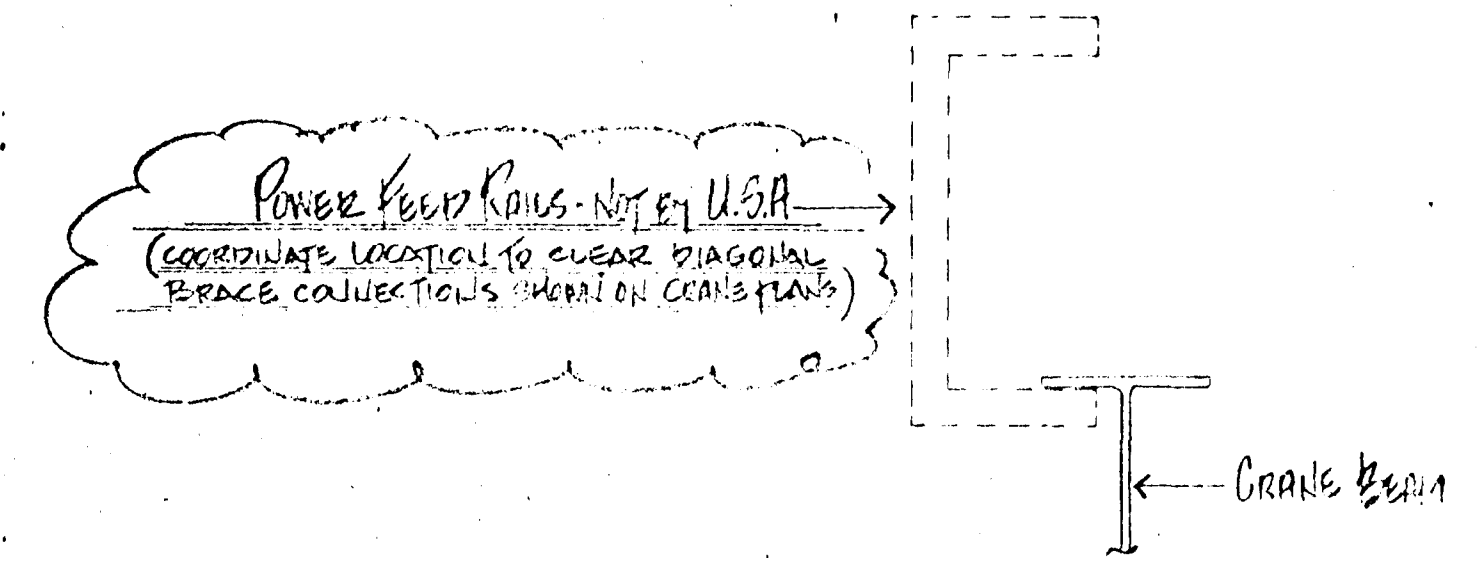
DETAIL C (E33)



DETAIL E (E33)  
TYP. CRANE BEAM SPLICE



SECTION G (E33)



DETAIL OF POWER FEED RAIL

- ERECTOR NOTE:
1. ERECT STEEL WITH PIECE MARKS CORRESPONDING TO LOCATION OF PIECE MARKS ON ERECTION DRAWINGS.
  2. ERECT AND PLUMB BAYS PROGRESSIVELY TO INSURE OVERALL WIDTH AND LENGTH IS MAINTAINED.
  3. ALL BOLTS ARE A325 W/O WASHERS (UNL. NTO.)

FOR CONSTRUCTION  
ISAL DWG. NO. 185.993 5012AP2650

BOLT DIAMETER LEGEND		ISSUE	REV. DESCRIPTION	DATE	BY
1/2" = 12.70mm	3/8" = 22.23mm	A	FOR APPL	3/24/96	CP
5/8" = 15.88mm	1" = 25.40mm	O	PER. CONST	5/23	CP
3/4" = 19.05mm	1 1/4" = 31.75mm				



DESCRIPTION: CRANE BEAM SECT.			
CUSTOMER: ISTAK H.F.			
LOCATION: ICELAND			
BUYER NO.:			
DRAWING BY EV	DATE 3-18-96	CHECK BY CP	DATE 3/27/96
JOB # 19547	LOADS SEE COVER	DRAWING # E33 OF 78	ISSUE 2