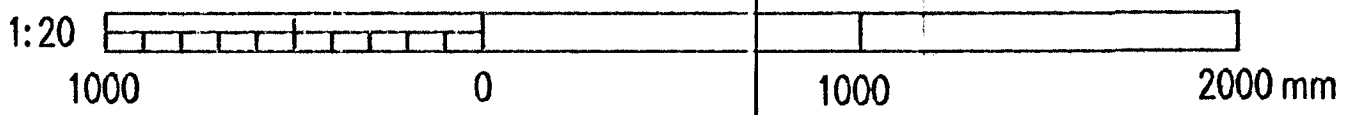
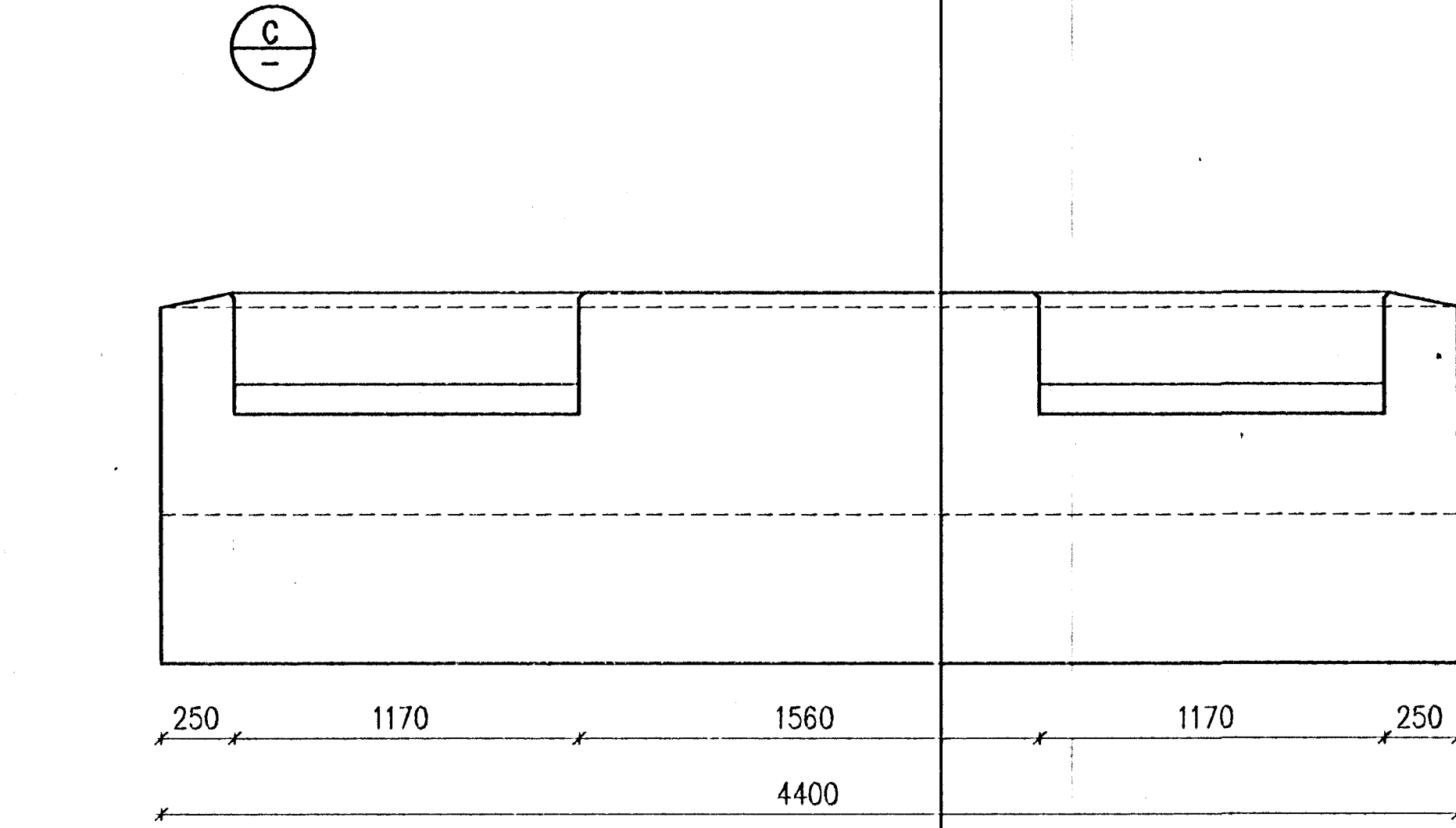
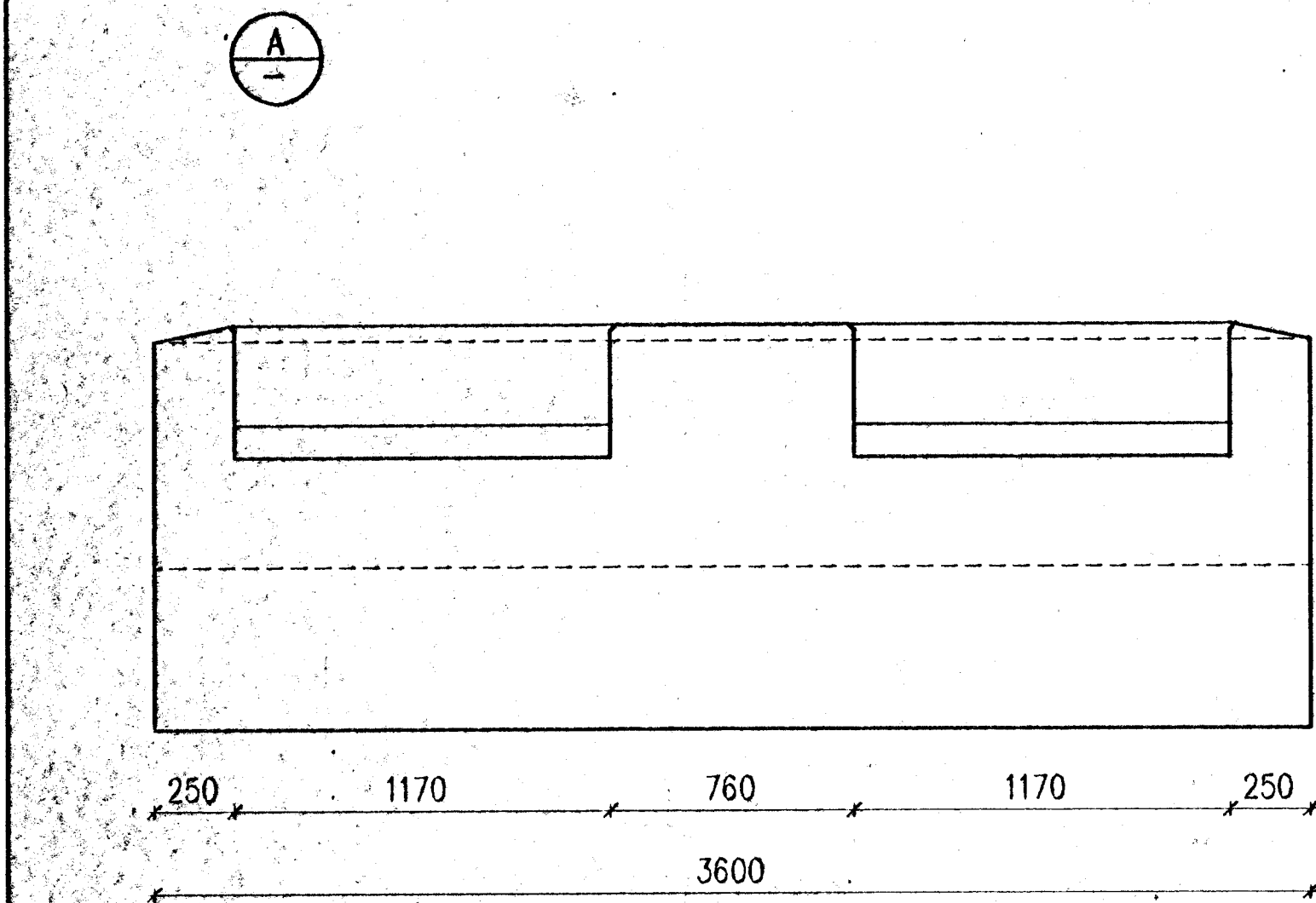
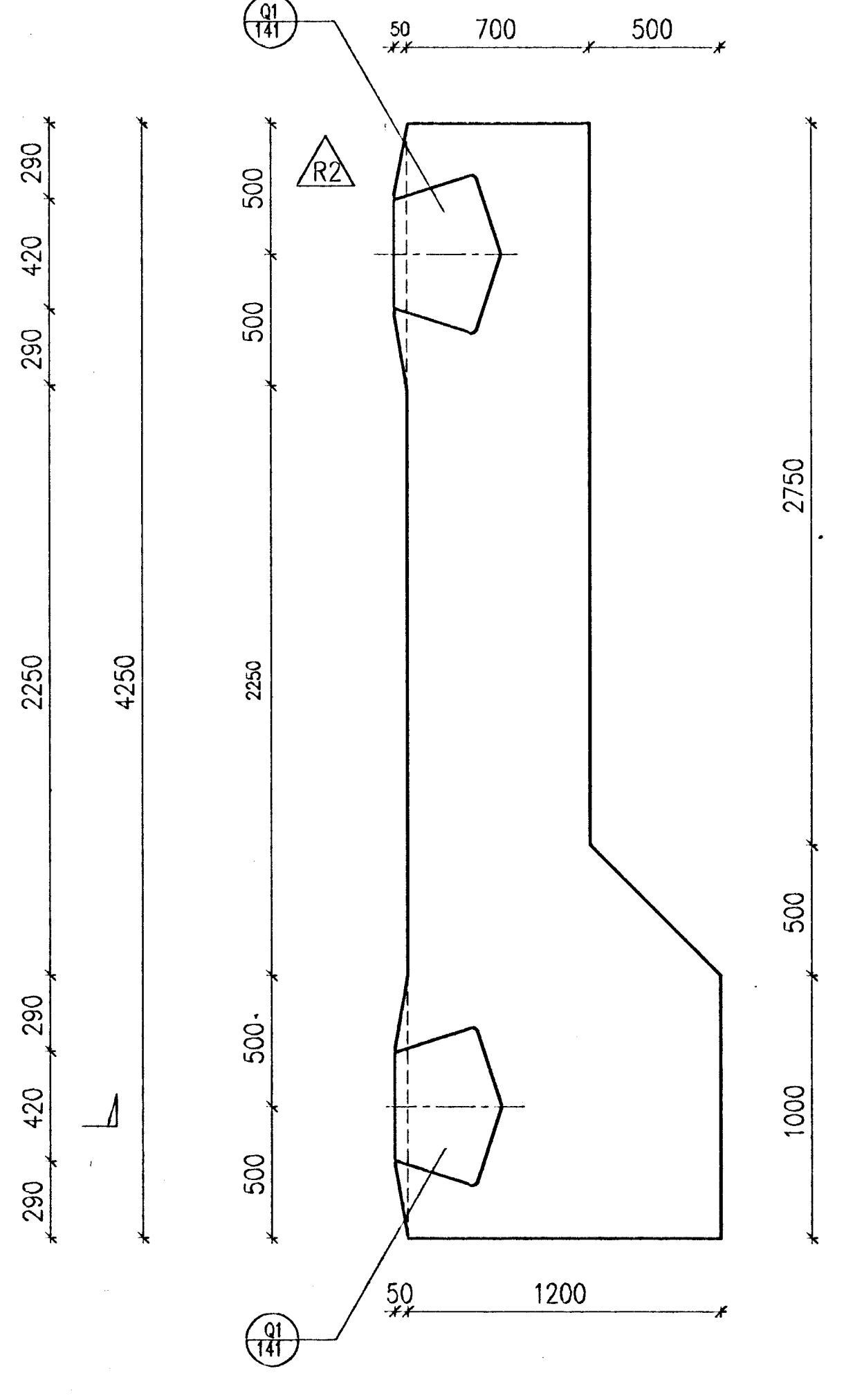
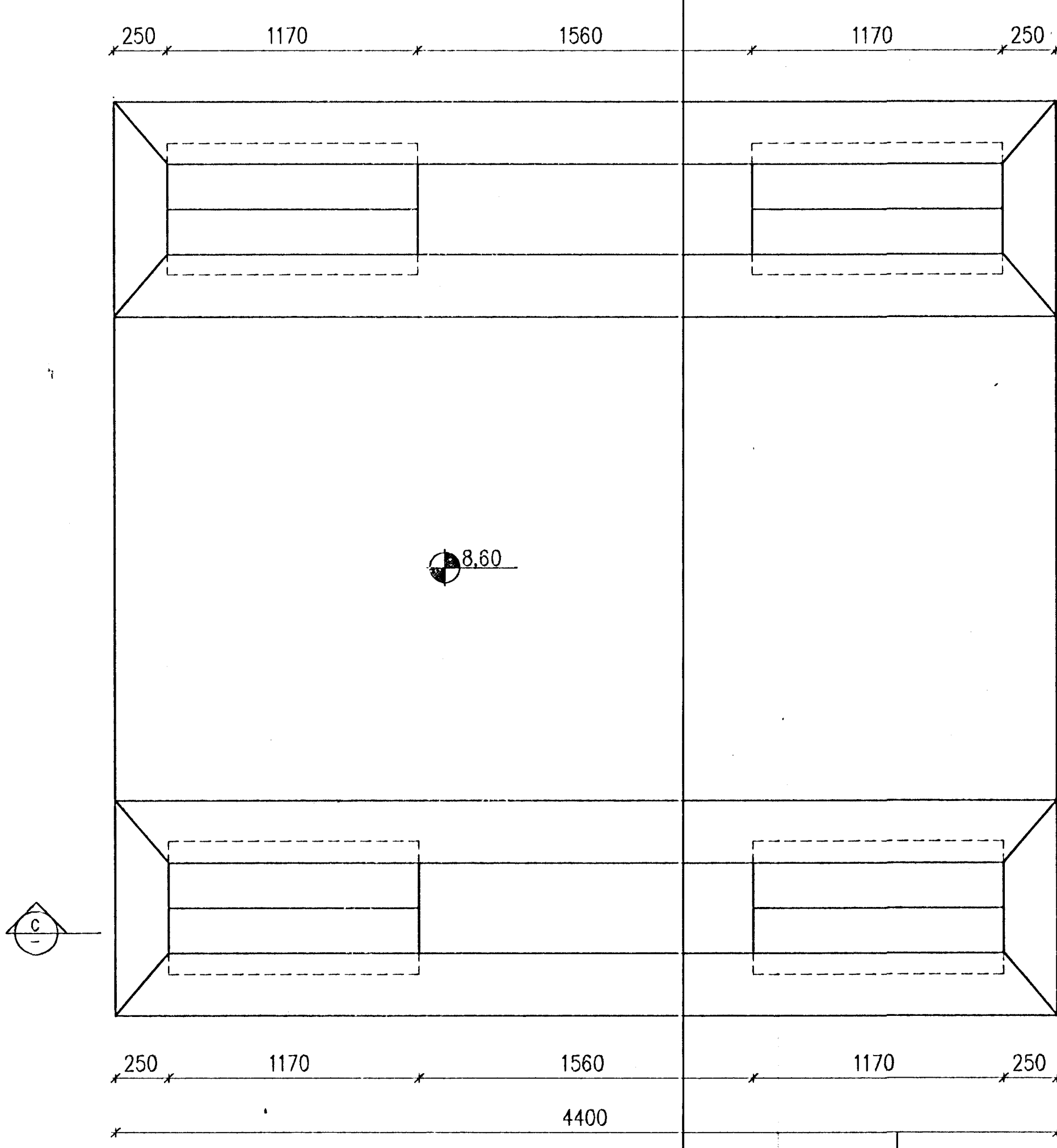
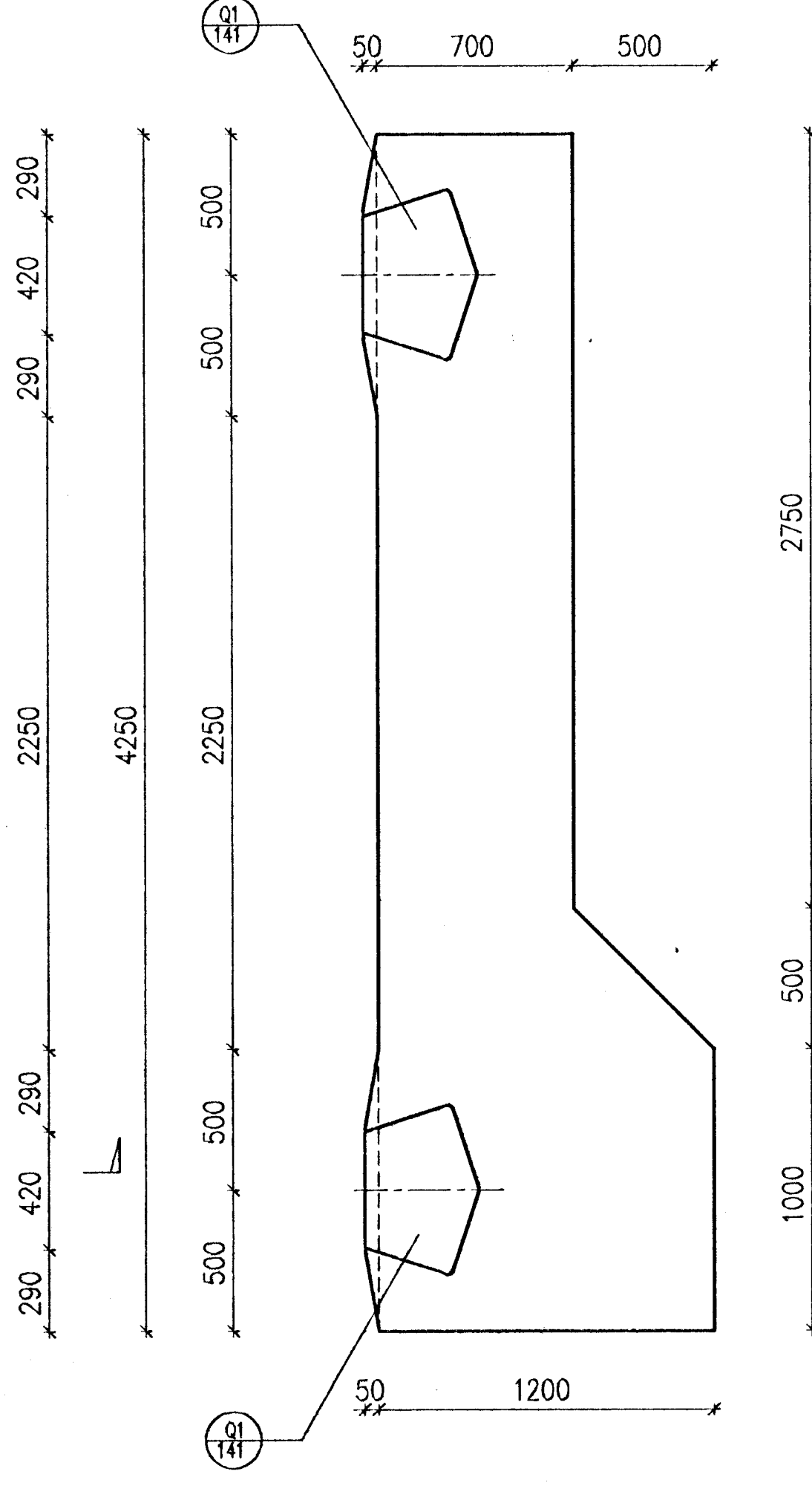
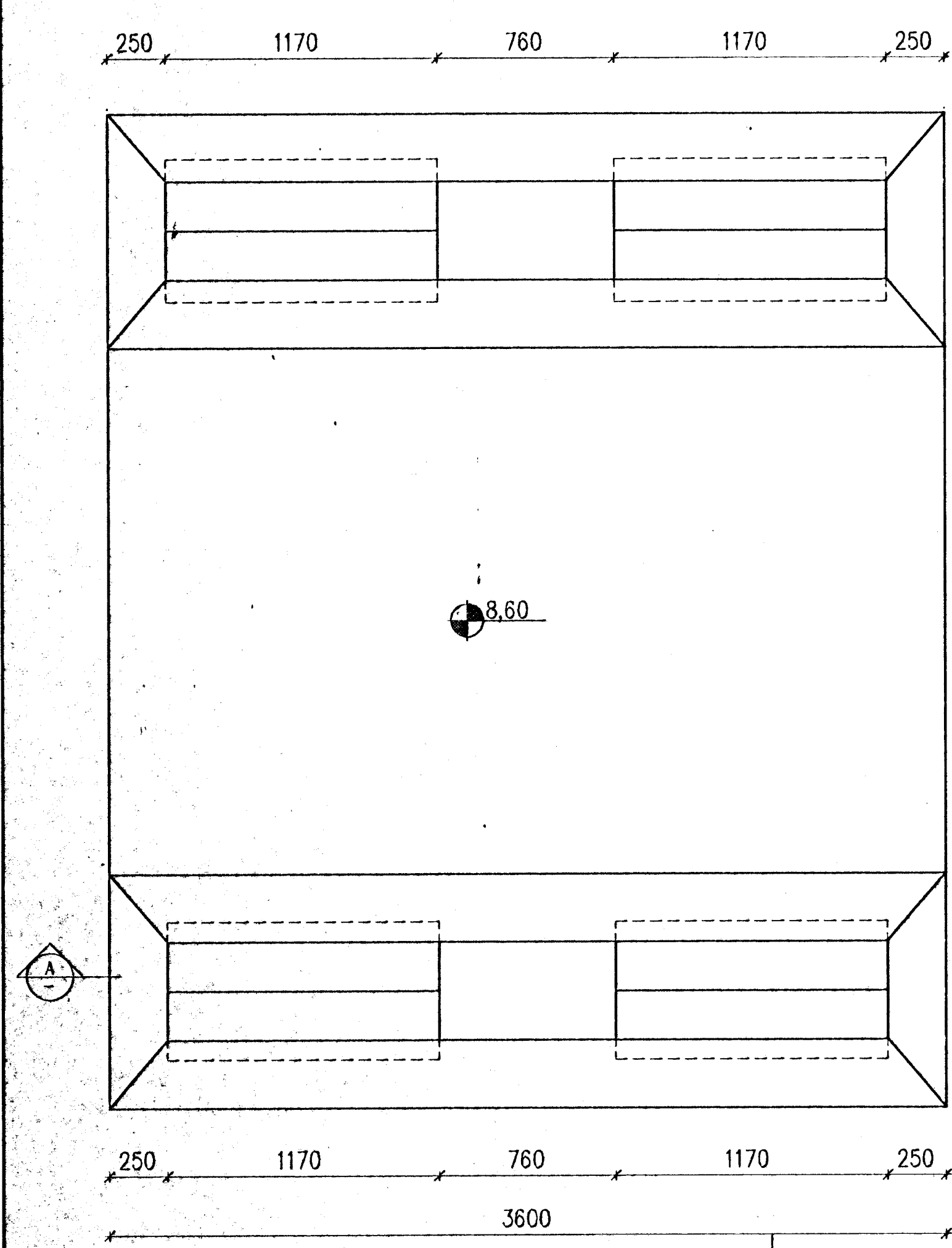


F1
102 80 pieces

B
-

F3
102 64 pieces

D
-



HAFFNADUR
BYGGINGAULLITRÖÐUN
16/2 '96
APGREITT
BFD

CONCRETE: C30/37-38-S2

REV. NO.	DATE	REVISION	BY	APP.	REV. NO.	DATE	REVISION	BY	APP.	NOTES	REFERENCE DRAWING	DRAWING NUMBER
2	1998.02.13	DIMENSION	NI									
1	1998.01.02	APPROVED FOR CONSTRUCTION										

VST CONSULTING ENGINEERS Ltd. Arnuda 4 103 Reykjavík Ísland Tel: +354 569 5000 Fax: +354 569 5010		95.120 - 12.111	
ICELANDIC ALUMINIUM COMPANY LTD.		DRAWN 95.10.28 FGS APPROVED 95.10.28 KGS PROCESS 95.10.28 NI PROJECT 95.10.28 NI SCALE 1:20 FGS/AT	POTROOM NO. 3 CONCRETE WORK FOUNDATION F1 & F3 FORMWORK
ALUSUISSE ALESA	ALUSUISSE ENGINEERING LTD. ZURICH SWITZERLAND	79000-32311	2
ISAL	ICELANDIC ALUMINIUM CO. LTD	186.611	

This drawing is our property and given for personal use only. It may not be copied or made available to others without our permission. The receiver is responsible for any misuse.