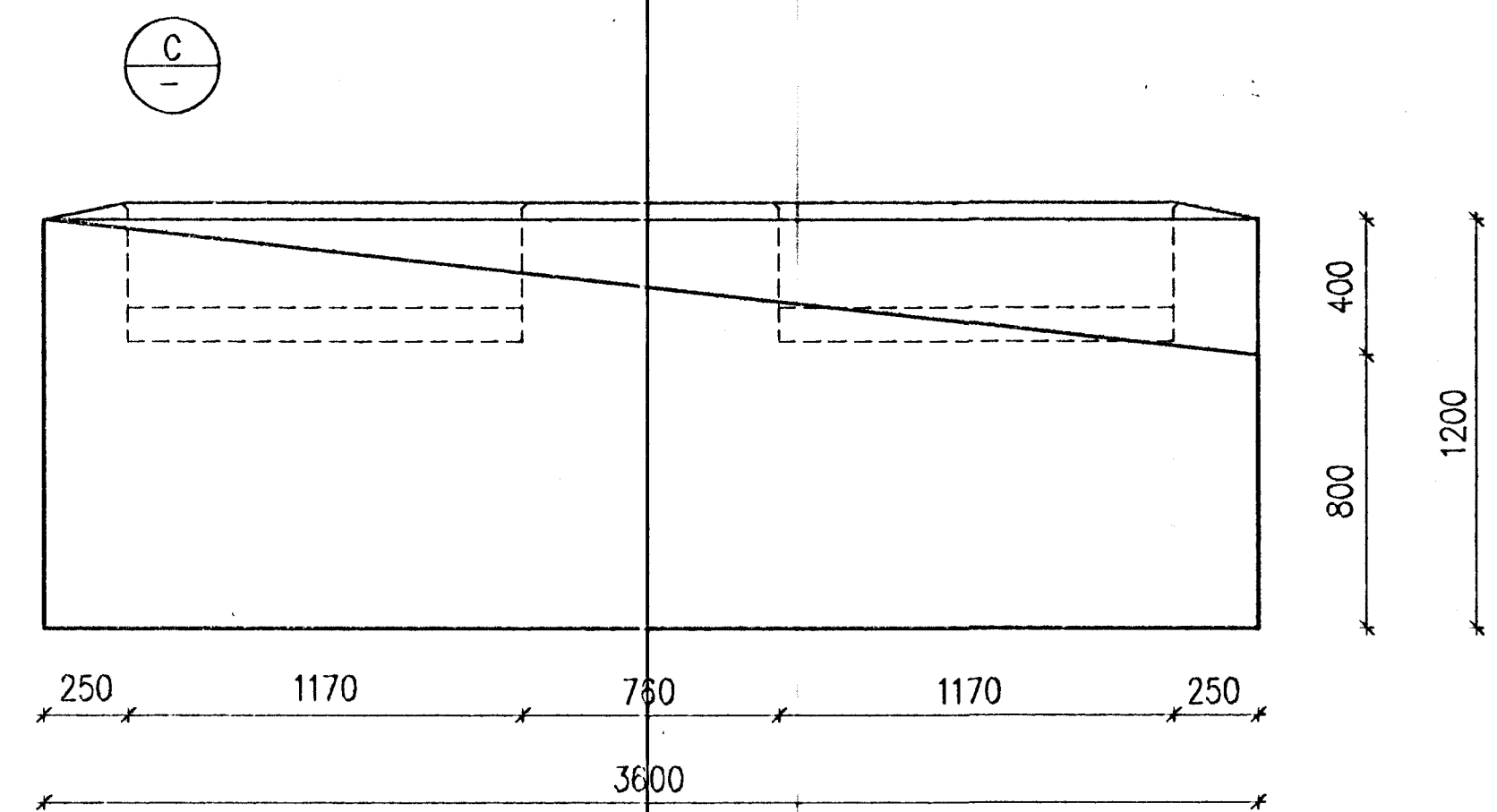
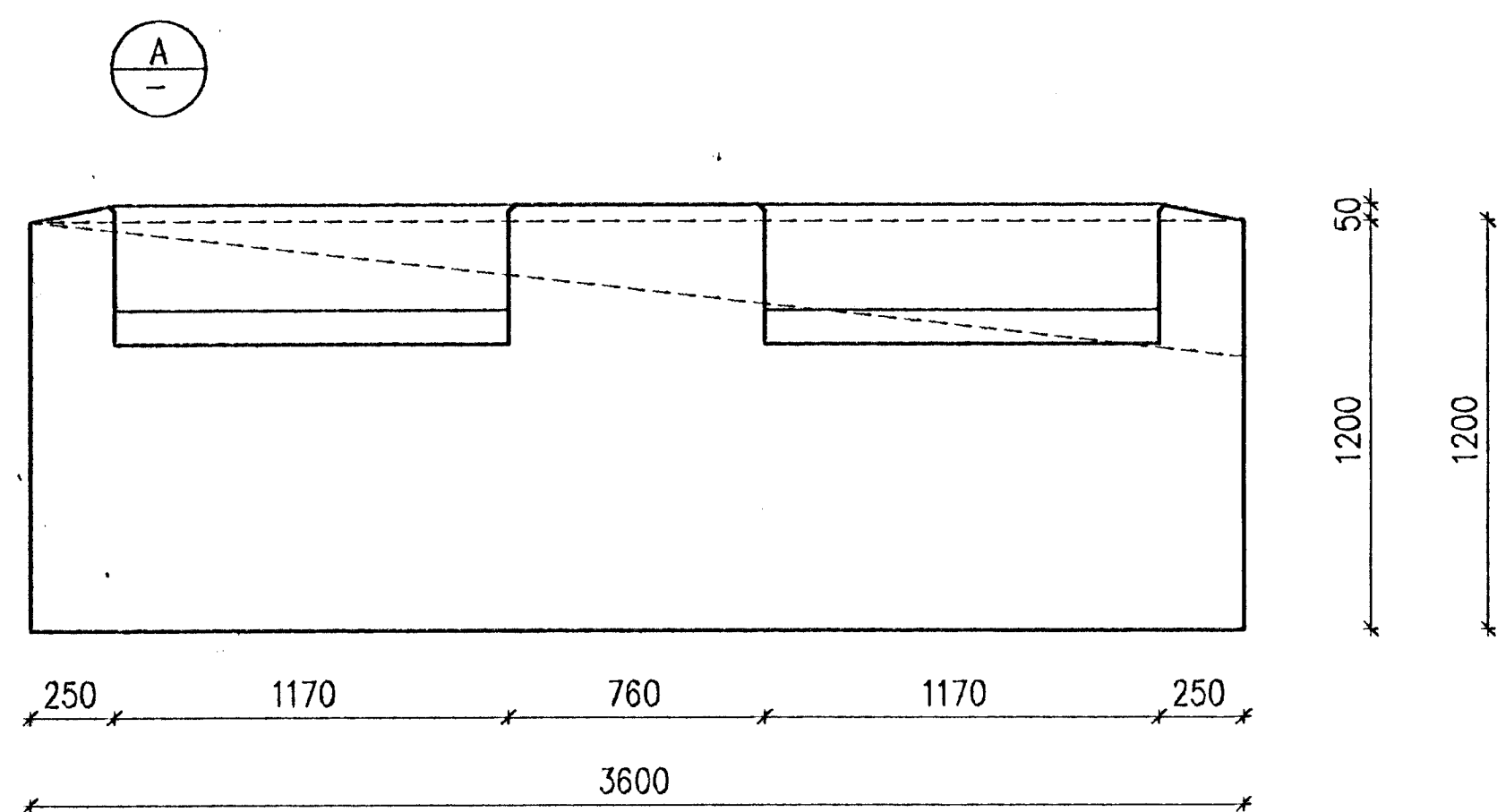
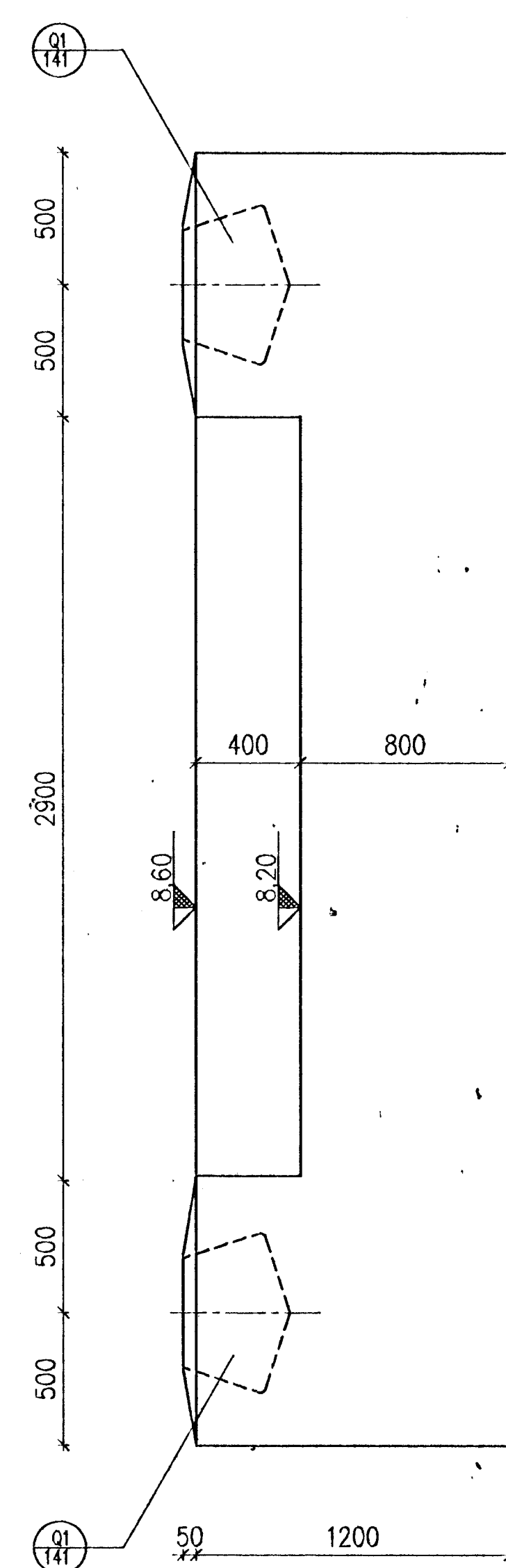
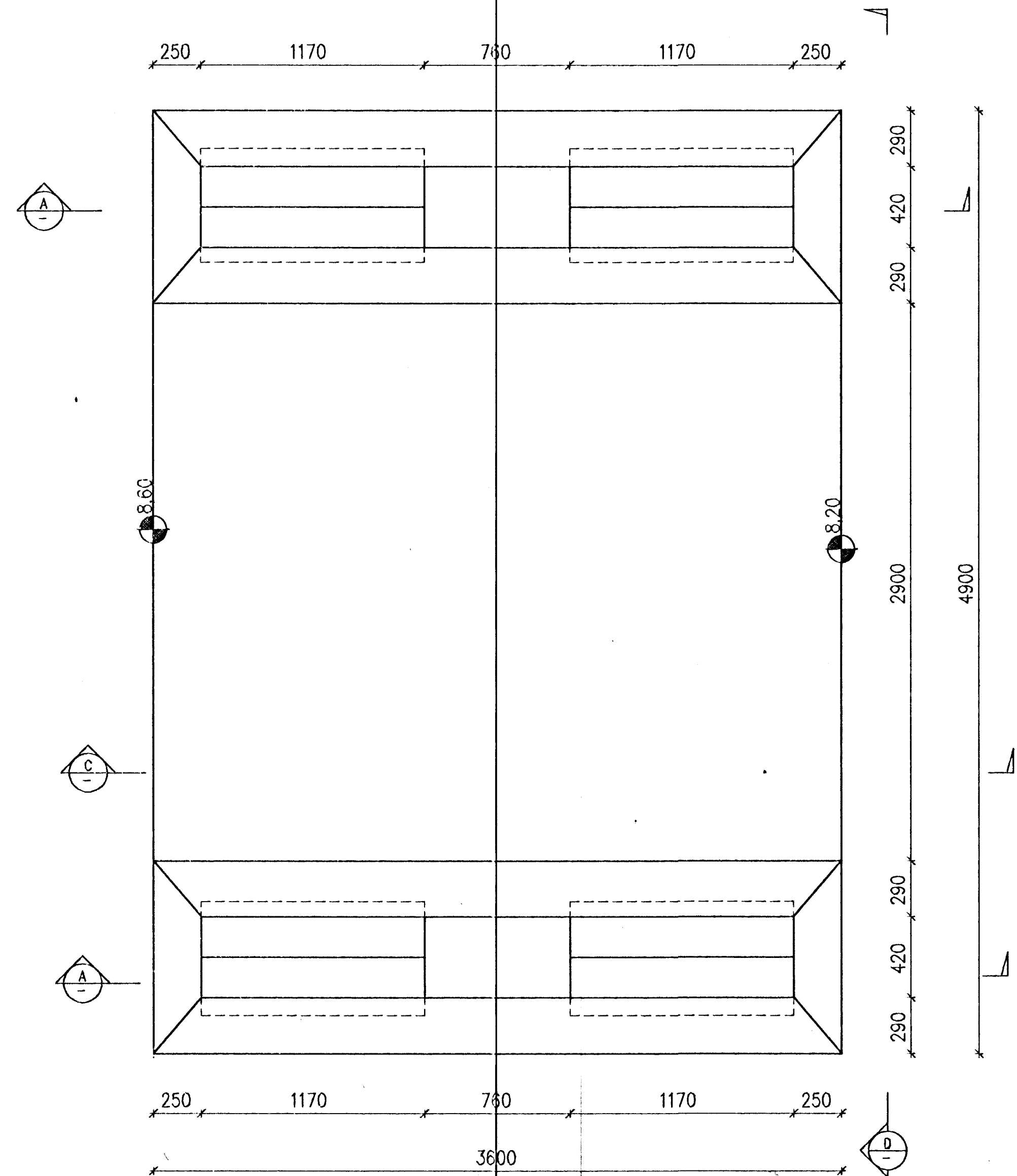
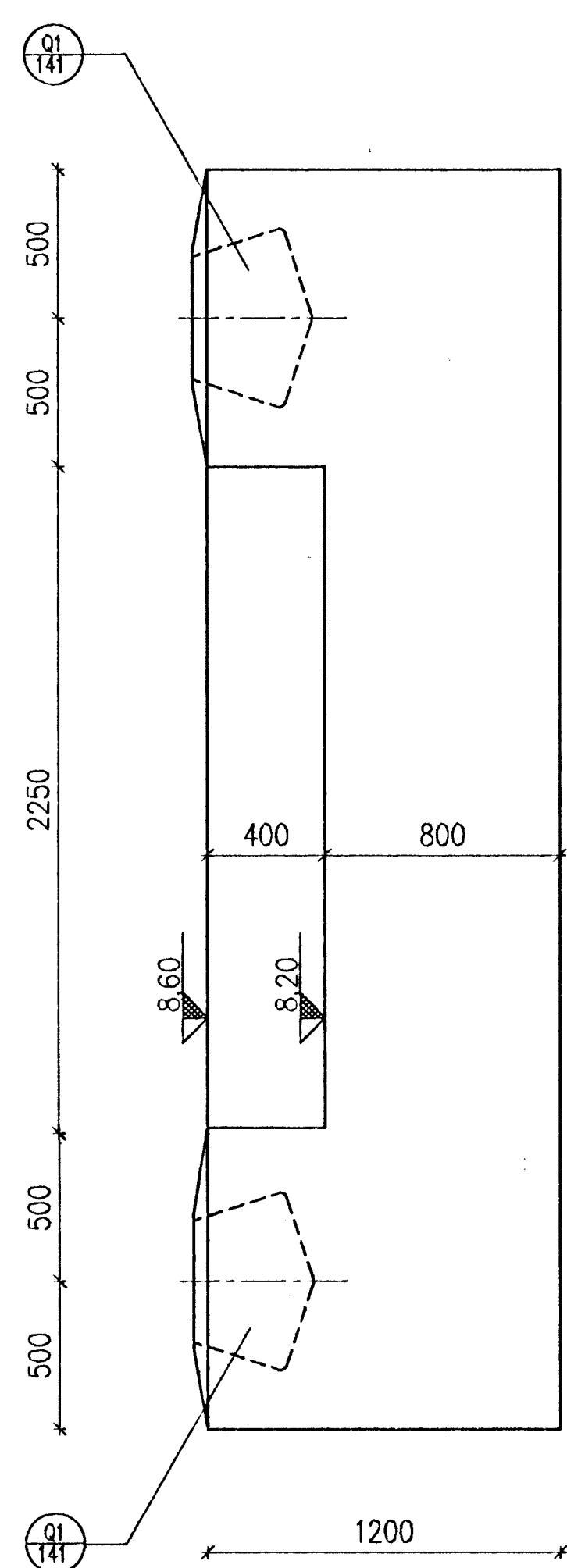
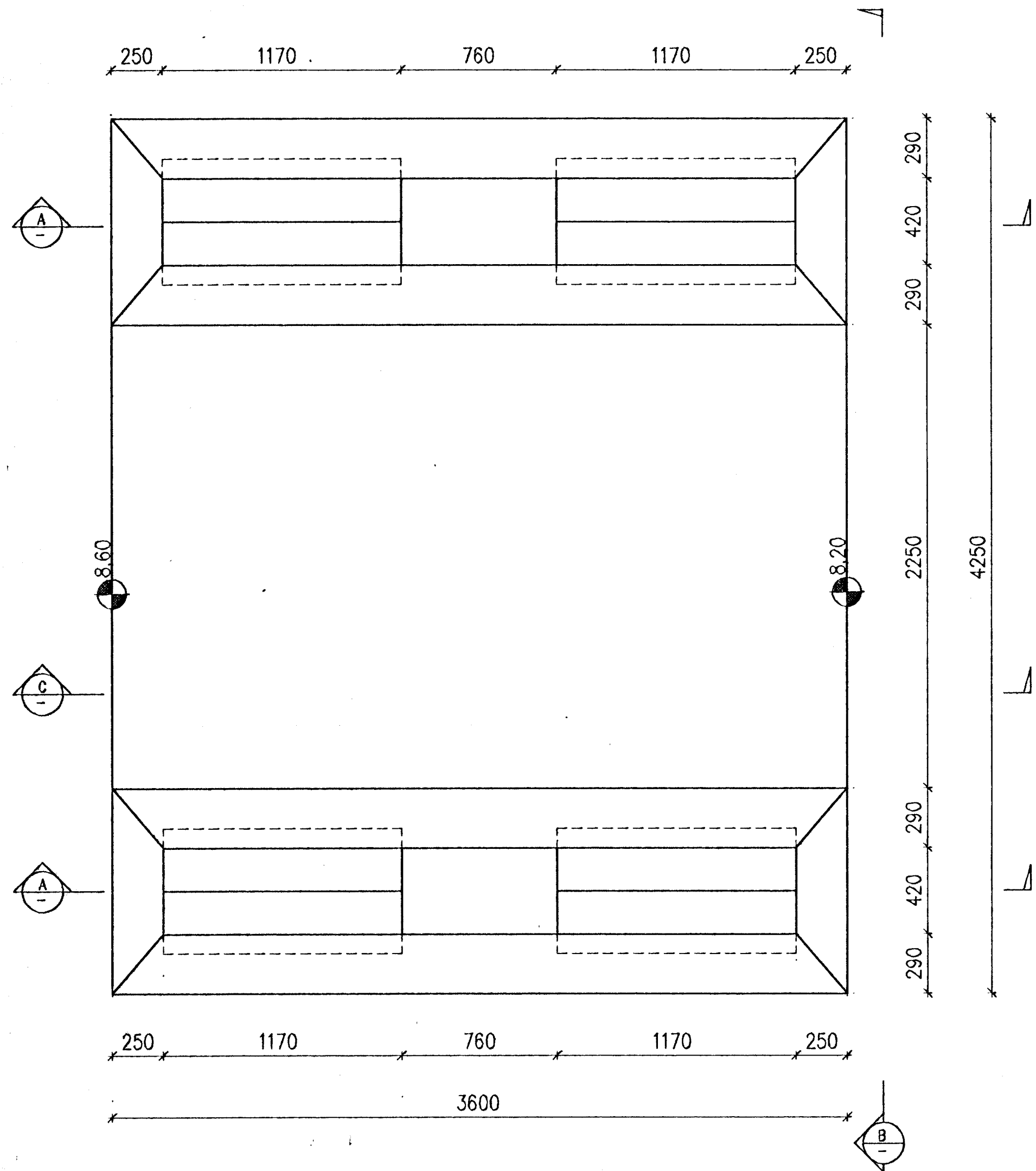


F7  
102 32 pieces

B

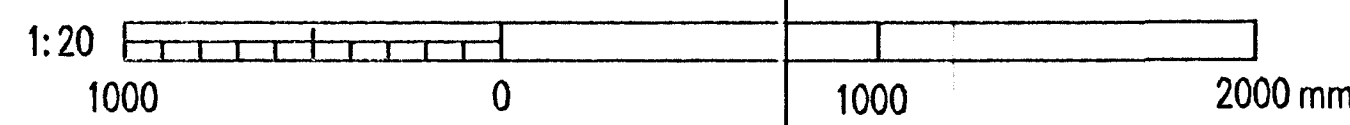
F8  
102 16 pieces

D



HAHARREYRDUR  
BYGGINGAUFLLTÖRNI  
AFGREITT  
29/11/96  
TSC

CONCRETE: C30/37-38-S2



VST CONSULTING ENGINEERS Ltd.  
Armula 4 108 Reykjavik Iceland  
Tel: +354 569 5000 Fax: +354 569 5010

95.120 - 12.113

ICELANDIC ALUMINIUM COMPANY LTD.

POTROOM NO. 3  
CONCRETE WORK  
FOUNDATION F7 & F8  
FORMWORK

ALES  
ALUSUISSE ENGINEERING LTD.  
ZURICH SWITZERLAND  
ICELANDIC ALUMINIUM CO. LTD

79000-32313  
186.613

REV. NO.	DATE	REVISION	BY	APP.	REV. NO.	DATE	REVISION	BY	APP.	NOTES	REFERENCE DRAWING	DRAWING NUMBER
1	1998.01.02	APPROVED FOR CONSTRUCTION	<i>[Signature]</i>	N.I.								

This drawing is our property and given for personal use only. It may not be copied or made available to others without our permission. The receiver is responsible for any misuse.