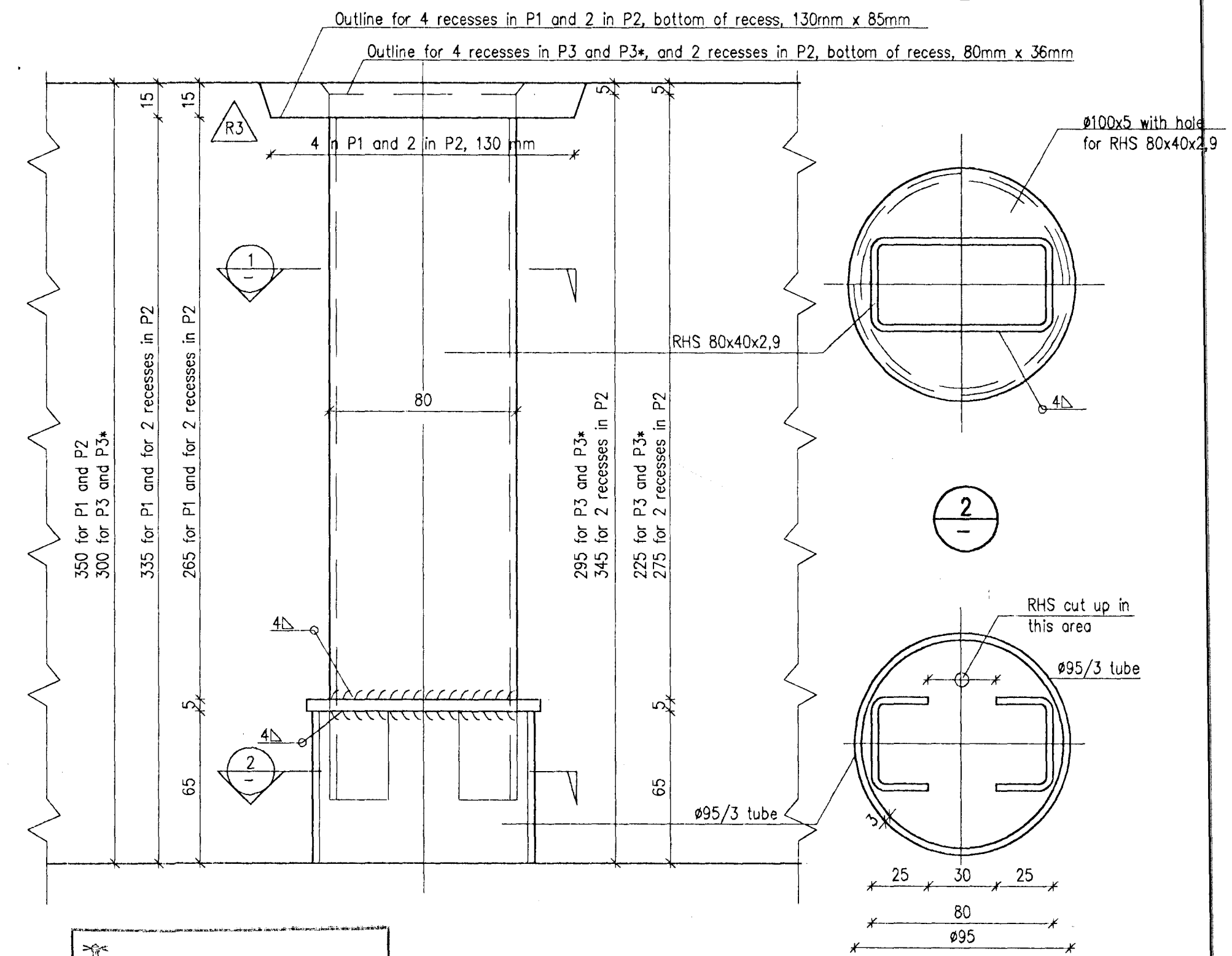


**D3** EMBEDDED INSERT IN PRESTRESSED ELEMENTS FOR LIFTING KEYS  
SIDE VIEW 1:2



HAFHAFS/REYUR  
BYGGINGAFLUTTRINIR  
28/3/96  
AFGRETT

CONCRETE: C50/60-38-S2

<b>VST CONSULTING ENGINEERS Ltd.</b> Armula 4 108 Reykjavik Iceland Tel: +354 569 5000 Fax: +354 569 5010		95.120 - 12.135												
<b>ICELANDIC ALUMINIUM COMPANY LTD.</b>	<table border="1"> <tr><td>DRAWN</td><td>95.10.28</td><td>KGS</td></tr> <tr><td>APPROVED</td><td>95.10.28</td><td>KGS</td></tr> <tr><td>PROCESS</td><td>95.10.28</td><td>NI</td></tr> <tr><td>PROJECT</td><td>95.10.28</td><td>NI</td></tr> </table>	DRAWN	95.10.28	KGS	APPROVED	95.10.28	KGS	PROCESS	95.10.28	NI	PROJECT	95.10.28	NI	POTROOM NO. 3 CONCRETE WORK PRESTRESSED SLABS, P1, P2, P3 FORMWORK
DRAWN	95.10.28	KGS												
APPROVED	95.10.28	KGS												
PROCESS	95.10.28	NI												
PROJECT	95.10.28	NI												
<b>ALUSUISSE ENGINEERING LTD. ZURICH SWITZERLAND</b>	SCALE 1:2,10,20	79000-32335												
<b>ICELANDIC ALUMINIUM CO. LTD</b>	ISAL	186.635												

REV. NO.	DATE	REVISION	BY	APP.	REV. NO.	DATE	REVISION	BY	APP.	NOTES	REFERENCE DRAWING	DRAWING NUMBER
4	1996.03.25	MINOR REVISION	NI	N.I.								
3	1996.12.02	P1 AND P2, RECESS FOR LIFTING KEYS	FGS	N.I.								
2	1996.01.25	EMBEDDED PIPES	FGS	N.I.								
1	1996.01.02	APPROVED FOR CONSTRUCTION	FGS	N.I.								

This drawing is our property and given for personal use only. It may not be copied or made available to others without our permission. The receiver is responsible for any misuse.