

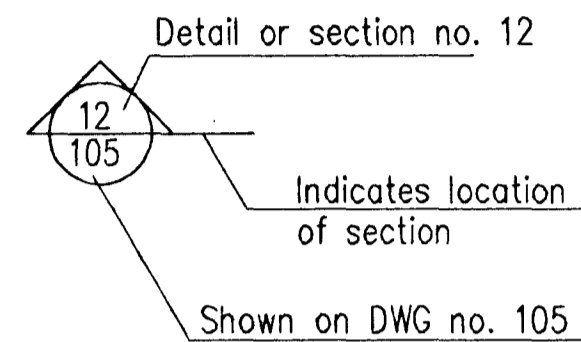
GENERAL NOTES

Elevations are in metres in Hafnarfjordur elevation system

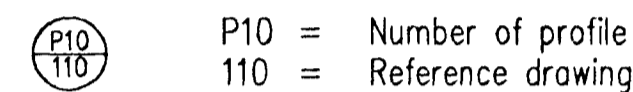
- ◻^{0.00} Stands for elevation 0,00 m on sections
- ◻^{0.00} Stands for elevation 0,00 m on plans

All dimensions shown are either metres or millimetres

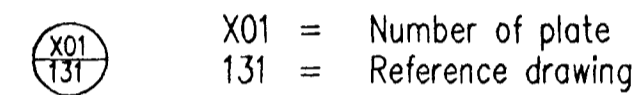
SECTIONS:



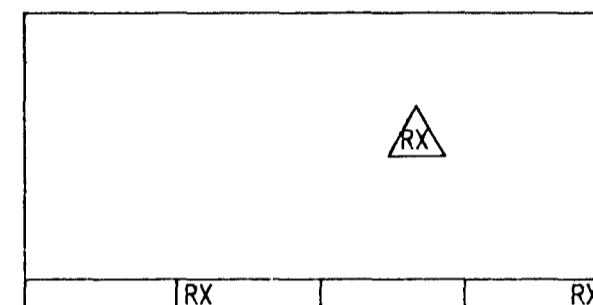
PROFILES:



PLATES:



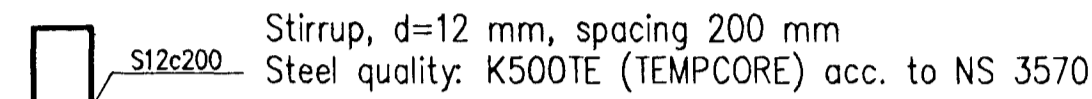
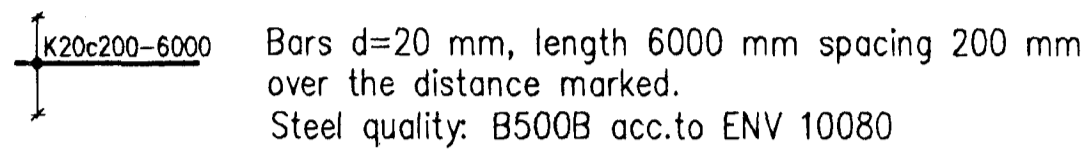
Revision no X shown on drawing:



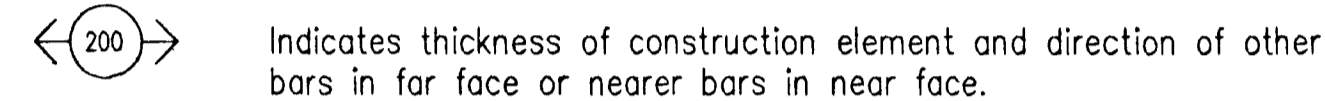
GENERAL NOTES FOR REINFORCEMENT

Ribbed reinforcing bars shall be of the following quality:
 B500B according to pr ENV 10080, marked as K
 K500TE (TEMPCORE) according to NS 3570, marked as S
 Plain bars, marked as R, are of quality Fe 360

- Ribbed bar without endhooks located in far face of a wall, or bottom face of a slab
- - - Ribbed bar without endhooks located in near face of a wall, or top face of a slab



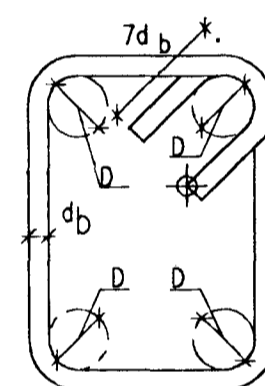
— Bar bent anchorage length into adjoining wall, slab or beam.



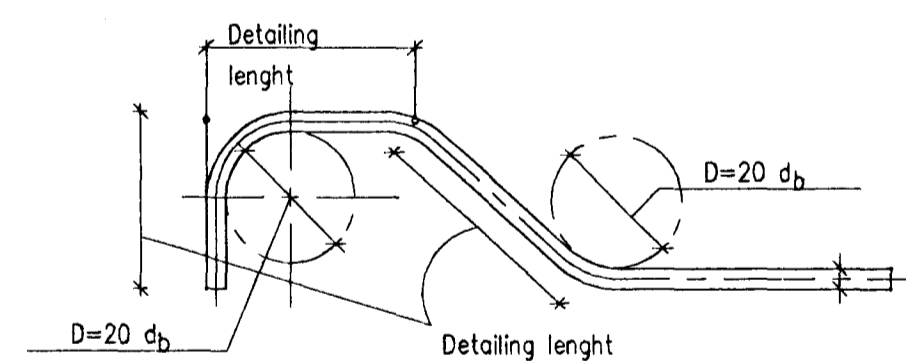
Concrete cover for reinforcement (tolerances acc. to FSENV1992)
 Bottom face in foundations 50 mm
 Outside surface: 40 mm
 Other surfaces 30 mm

REINFORCEMENT STIRRUPS

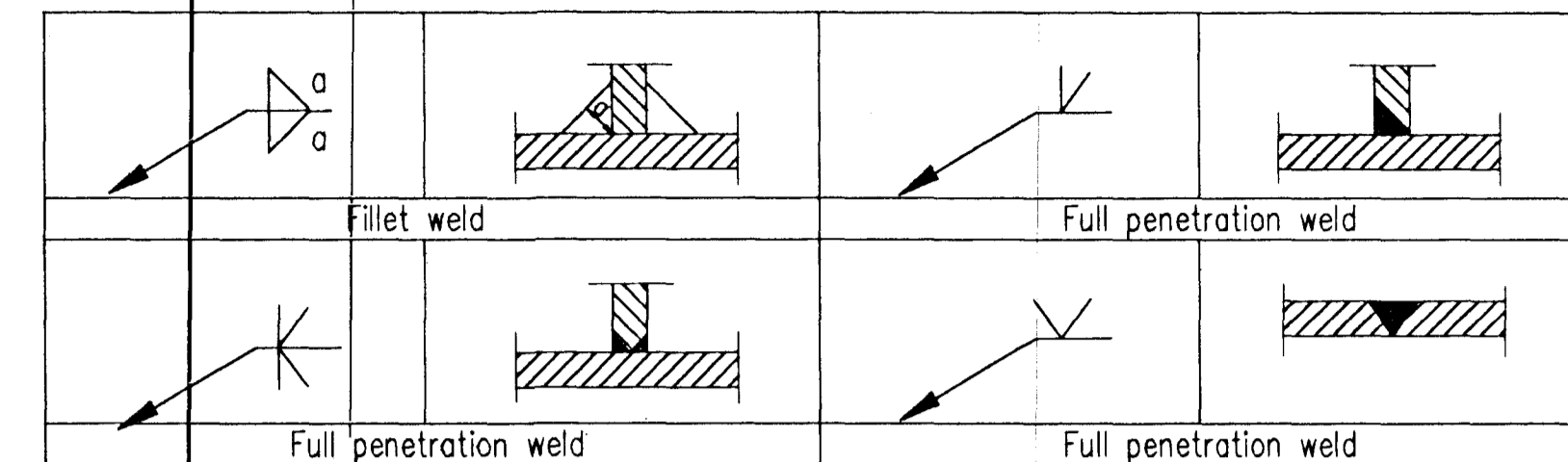
D=3 d_b or diameter of enclosed bar



REINFORCEMENT BENDING



WELDINGS



TIGHTENING OF BOLTS (CLASS 8.8)

BOLT diameter (mm)	TORQUE (Nm)
12	75 ± 10
16	170 ± 10
20	330 ± 20
24	560 ± 20
27	810 ± 20
30	1090 ± 20

MATERIAL SPECIFICATIONS

- Bolts: According to DIN 931 – 8.8 – hot dip galvanized
- Washers under nuts: According to DIN 7989 – hot dip galvanized
- Nuts: According to DIN 934 – 8 – hot dip galvanized
- Structural steel: Fe 360 (EN10025)
- Thin plate purlins and girts: Fe 510 (EN10025) – hot dip galvanized, 275 g/m²

4-12-97
 UB

VST CONSULTING ENGINEERS Ltd.
 Armula 4 108 Reykjavik Iceland
 Tel: +354 569 5000 Fax: +354 569 5010

95.120 – 28.111

ICELANDIC ALUMINIUM COMPANY LTD.

DRAWN	96.07.10	SG
APPROVED	96.07.10	NI
PROCESS	96.07.10	NI
PROJECT	96.07.10	NI
SCALE		FORW AT

PASSAGEWAY BUILDINGS
 CONCRETE AND STR. STEEL
 GENERAL NOTES
 FORMWORK

ALUSUISSE ALESA ALESA ENGINEERING LTD. ZURICH SWITZERLAND

79000-35211

ICELANDIC ALUMINIUM CO. LTD.

188.211

REV. NO.	DATE	REVISION	BY	APP.	REV. NO.	DATE	REVISION	BY	APP.	NOTES	REFERENCE DRAWING	DRAWING NUMBER
1	1996.08.22	APPROVED FOR CONSTRUCTION	NI	N.I.								

This drawing is our property and given for personal use only. It may not be copied or made available to others without our permission. The receiver is responsible for any misuse.