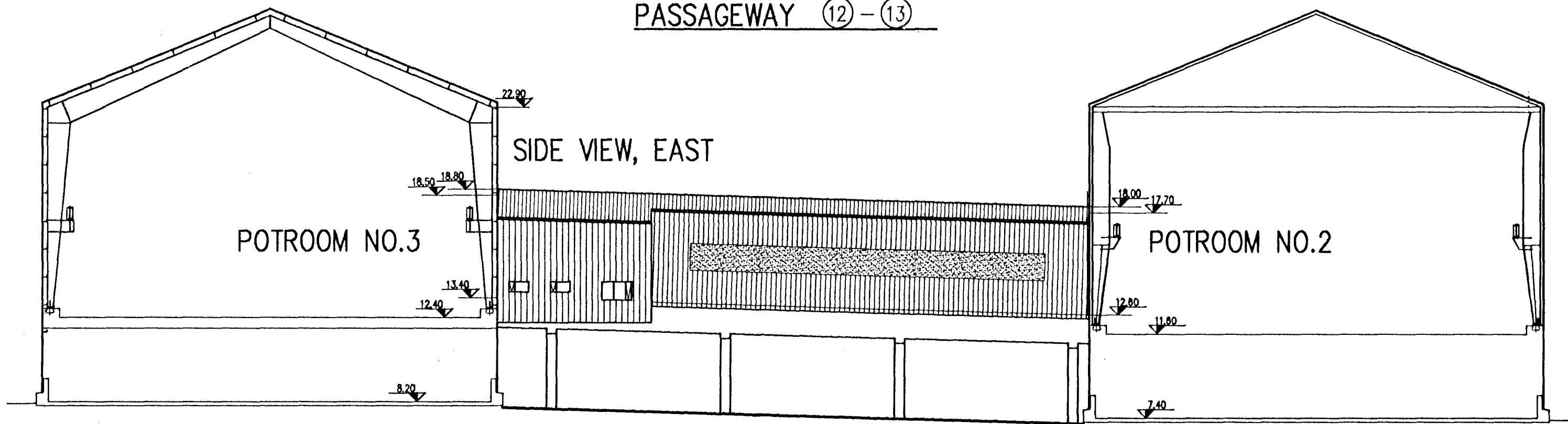
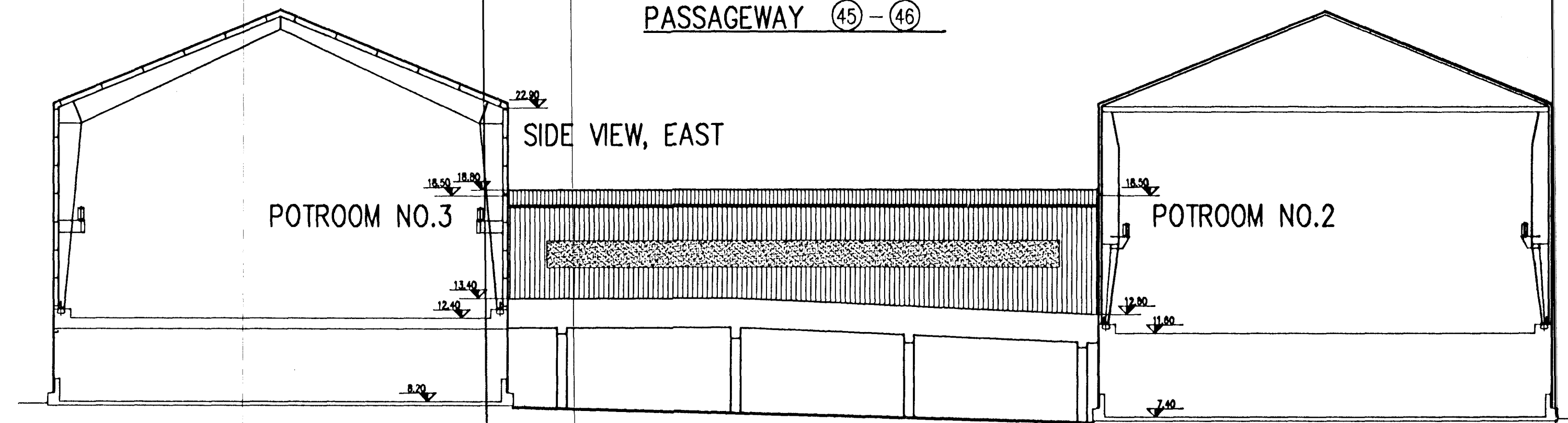


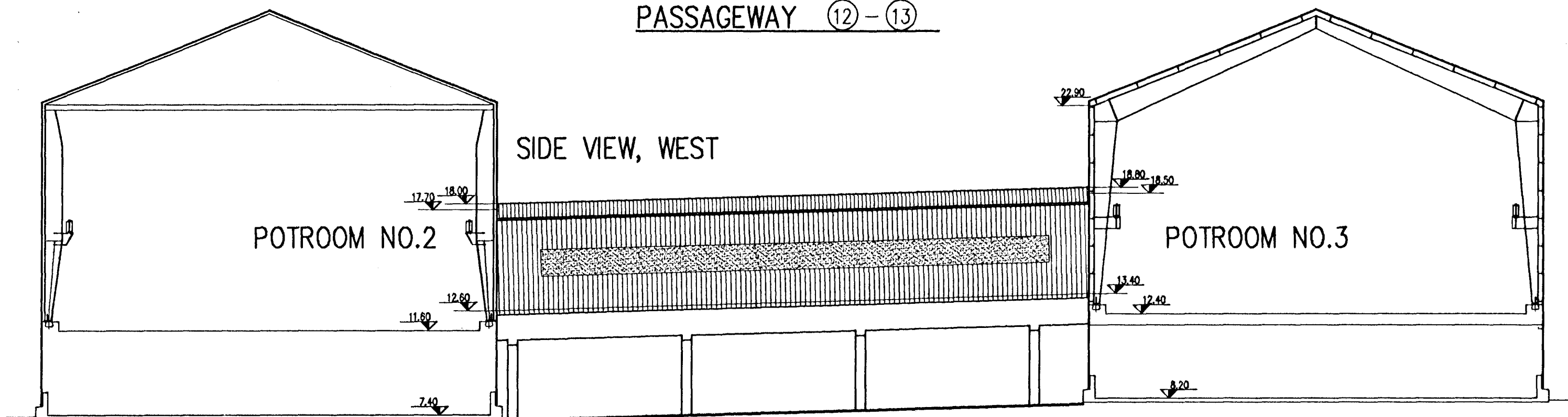
PASSAGEWAY 12-13



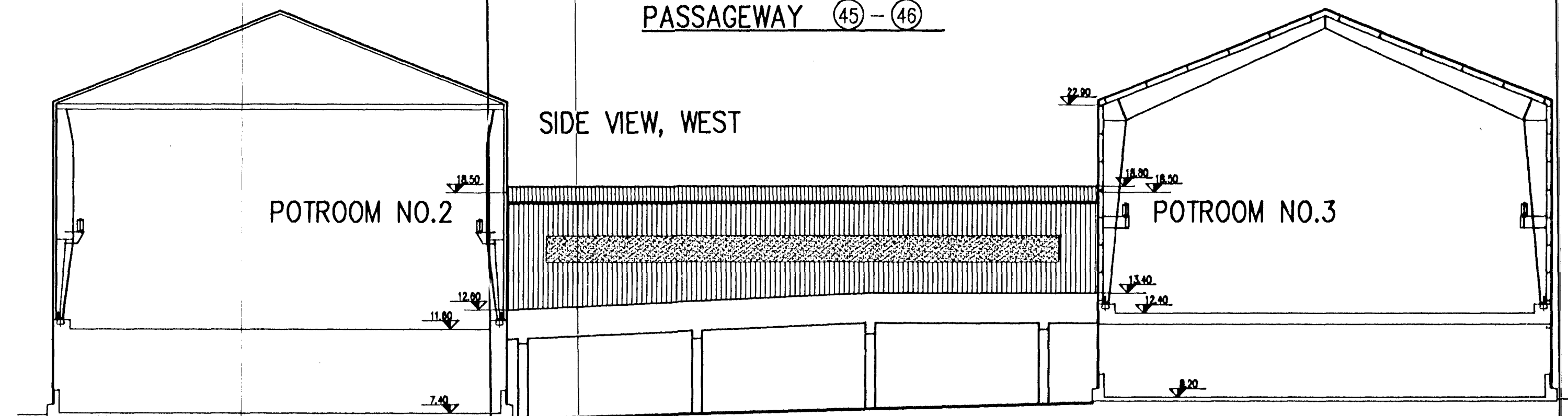
PASSAGEWAY 45-46



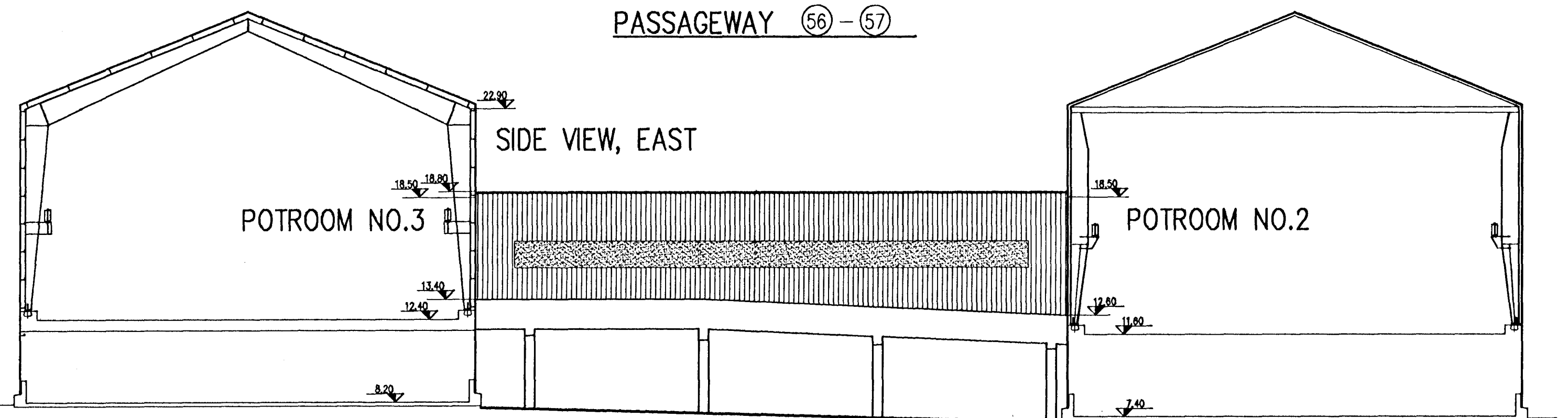
PASSAGEWAY 12-13



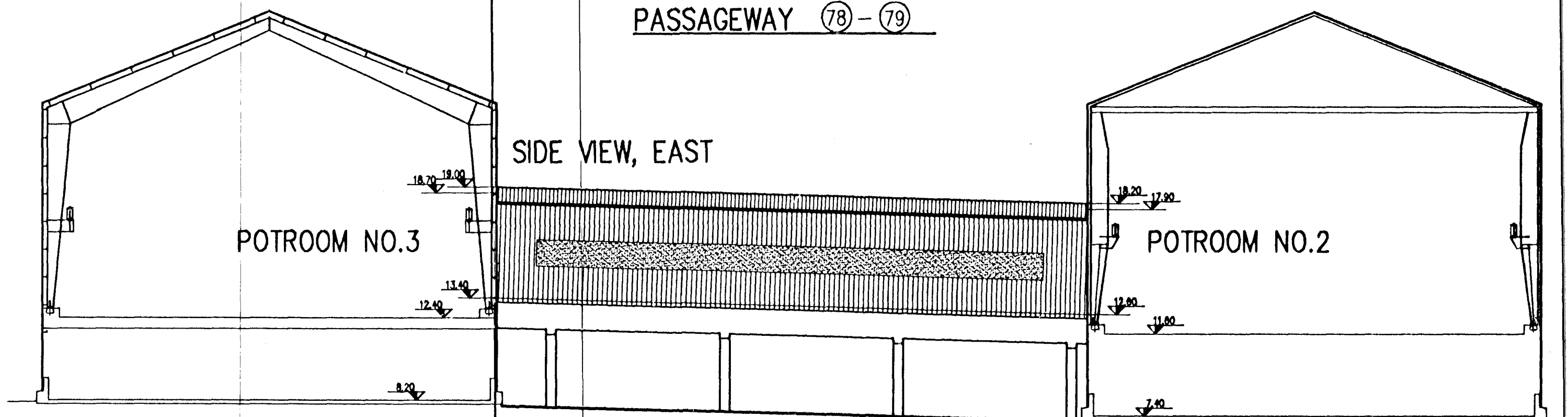
PASSAGEWAY 45-46



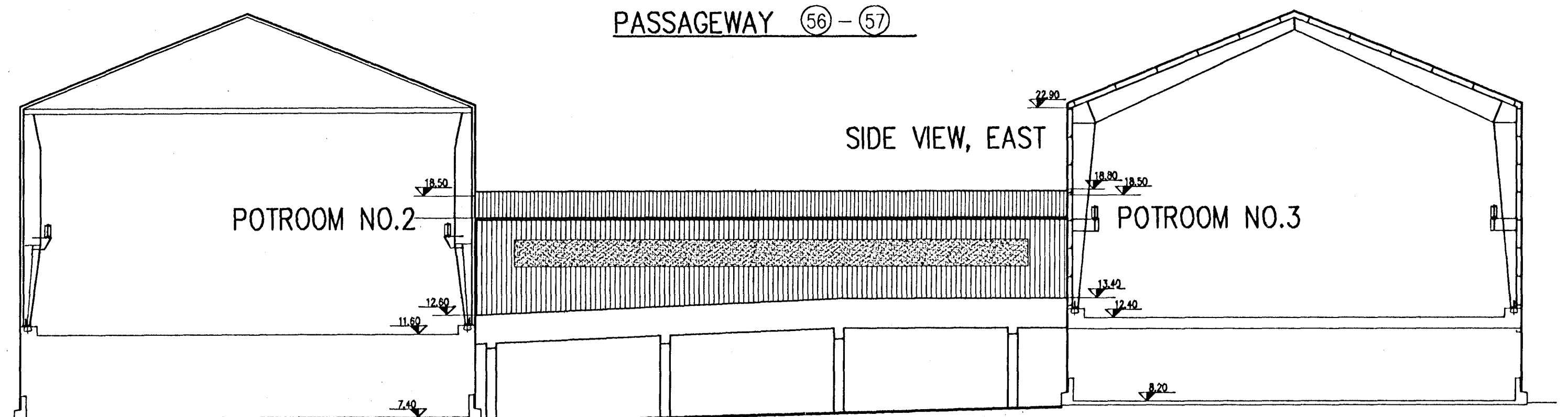
PASSAGEWAY 56-57



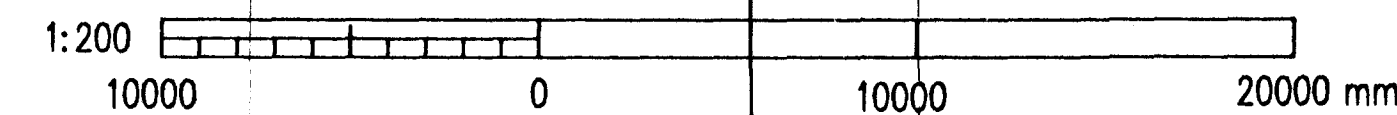
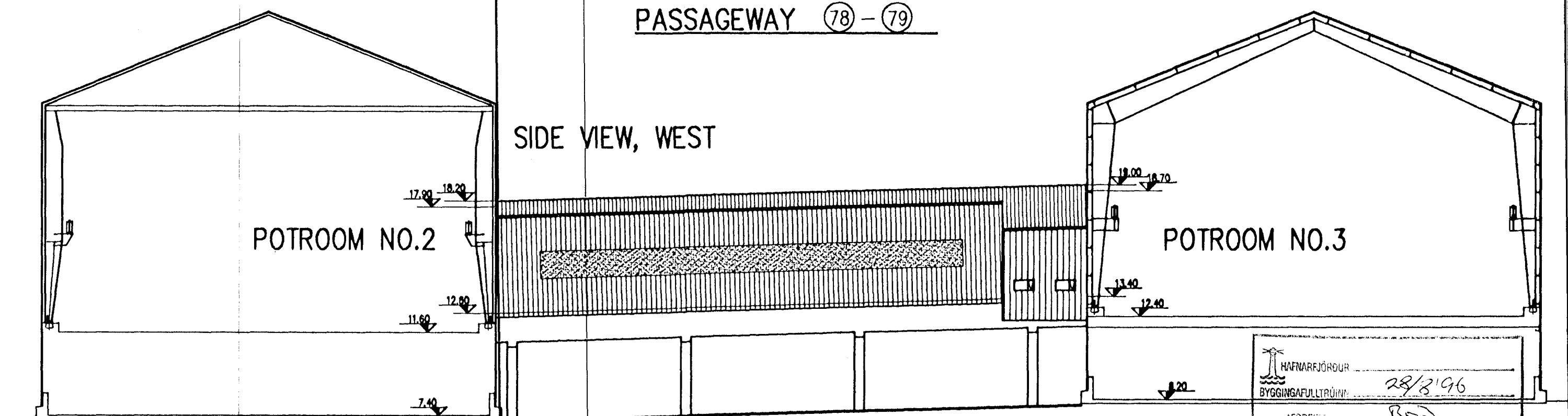
PASSAGEWAY 78-79



PASSAGEWAY 56-57



PASSAGEWAY 78-79



VST CONSULTING ENGINEERS LTD.
 Armula 4 10B Reykjavik Iceland
 Tel: +354 569 5000 Fax: +354 569 5010

95.120 - 28.163

ICELANDIC ALUMINIUM COMPANY LTD.

DRAWN	06.07.30	SSJ
APPROVED	06.07.30	NI
PROCESS	06.07.30	NI
PROJECT	06.07.30	NI
SCALE	1:200	FORMAT A1

PASSAGEWAY STRUCTURAL STEEL CLADDING SIDE VIEWS

ALUSUISSE ALESA ALUSUISSE ENGINEERING LTD. ZURICH SWITZERLAND

79000-35263

ICELANDIC ALUMINIUM CO. LTD

188.263

REV. NO.	DATE	REVISION	BY	APP.	REV. NO.	DATE	REVISION	BY	APP.	NOTES	REFERENCE DRAWING	DRAWING NUMBER
1	1996.08.22	APPROVED FOR CONSTRUCTION	NI	J.I.								

This drawing is our property and given for personal use only. It may not be copied or made available to others without our permission. The receiver is responsible for any misuse.

WARMBEJÓRÐUR
 BYGGINGAFLÉTTIÐ
 28/3/96
 AFRÉTTI: B.S.