

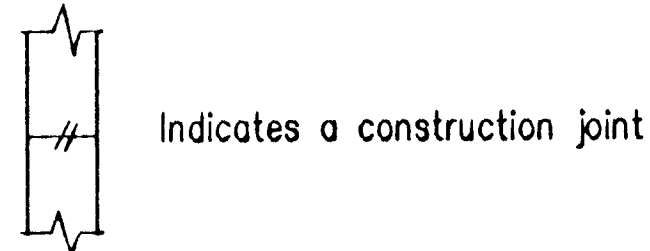
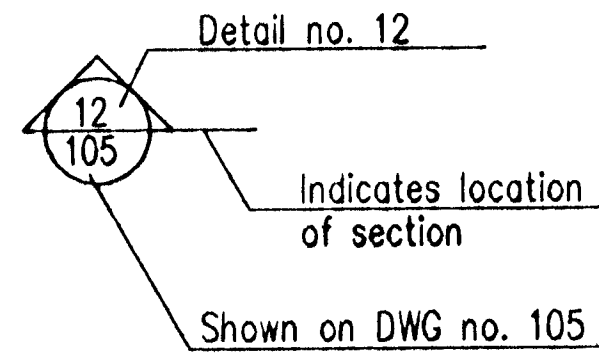
GENERAL NOTES

Elevations are in metres in Hafnafjordur elevation system

- 0.00 Stands for elevation 0,00 m on sections
- 0.00 Stands for elevation 0,00 m on plans

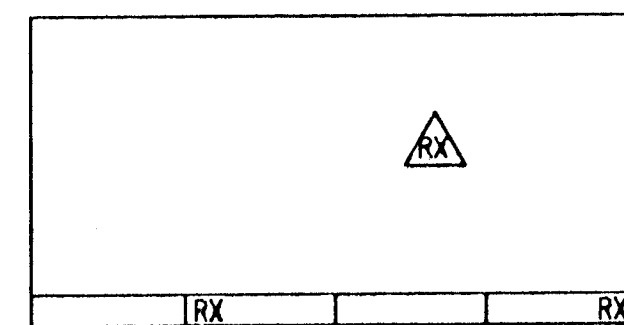
All dimensions shown are either metres or millimetres

- 200 Indicates thickness of wall or slab 200 mm



Indicates a construction joint

Revision no X shown on drawing:



GENERAL NOTES FOR CONCRETE

Concrete production.: see specification.

Concrete quality will be specified on relevant drawing.

Drawings will show where special concrete finishes are required.

Compressive strength will be determined by testing standard 150x300 mm cylinders in accordance with ENV 206: 1990.

Test cylinders shall be made and cured in accordance with ENV 206: 1990.

Concrete consistence will be measured by the slump method. Slump classes are thus defined:

Slump Class	Slump mm
S1	10-40
S2	50-90
S3	100-150
S4	> 160

The concrete class prescribed for each structural component will be expressed in the form:

$C_{aa}/bb-cc-S_d$

Where aa is the specified cylinder strength in MPa (ENV 206).
bb is the specified cubic strength in MPa (ENV 206).
cc is the normal maximum particle size in mm,
and d is the slump class as specified above.

Example: C30/37-38-S2

GENERAL NOTES FOR REINFORCEMENT

Ribbed reinforcing bars shall be of the following quality:
B500B according to pr ENV 10080, marked as K
K500TE (TEMPCORE) according to NS 3570, marked as S
Plain bars, marked as R, are of quality Fe 360

- Ribbed bar without endhooks located in far face of a wall, or bottom face of a slab
- - - Ribbed bar without endhooks located in near face of a wall, or top face of a slab

$\times 20c/200-6000$ Bars $d=20$ mm, length 6000 mm spacing 200 mm over the distance marked.
Steel quality: B500B acc.to ENV 10080

$\square S12c/200$ Stirrup, $d=12$ mm, spacing 200 mm
Steel quality: K500TE (TEMPCORE) acc. to NS 3570

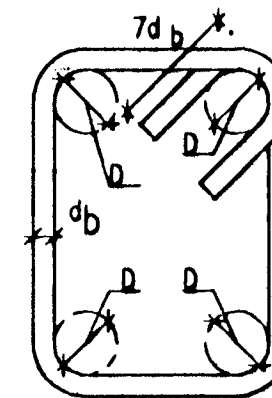
— Bar bent anchorage length into adjoining wall, slab or beam.

$\langle 200 \rangle$ Indicates thickness of construction element and direction of other bars in far face or nearer bars in near face.

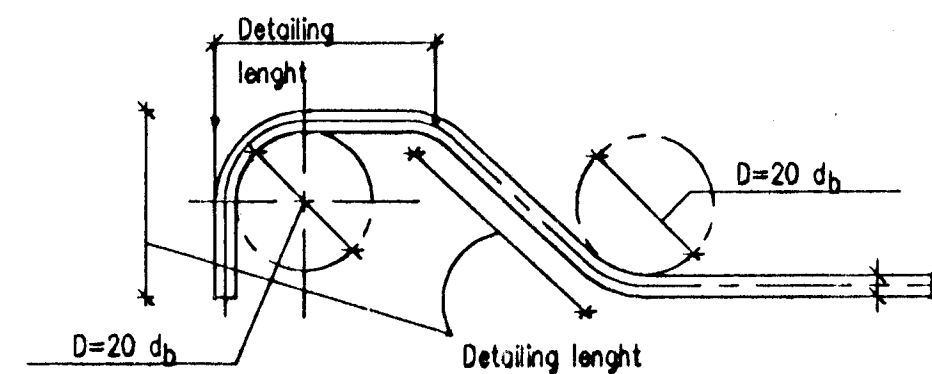
Concrete cover for reinforcement (tolerances acc. to FSENV1992)
Bottom face in foundations 50 mm
Outside surface: 40 mm
Other surfaces 30 mm

REINFORCEMENT STIRRUPS

$D=3 d_b$ or diameter of enclosed bar

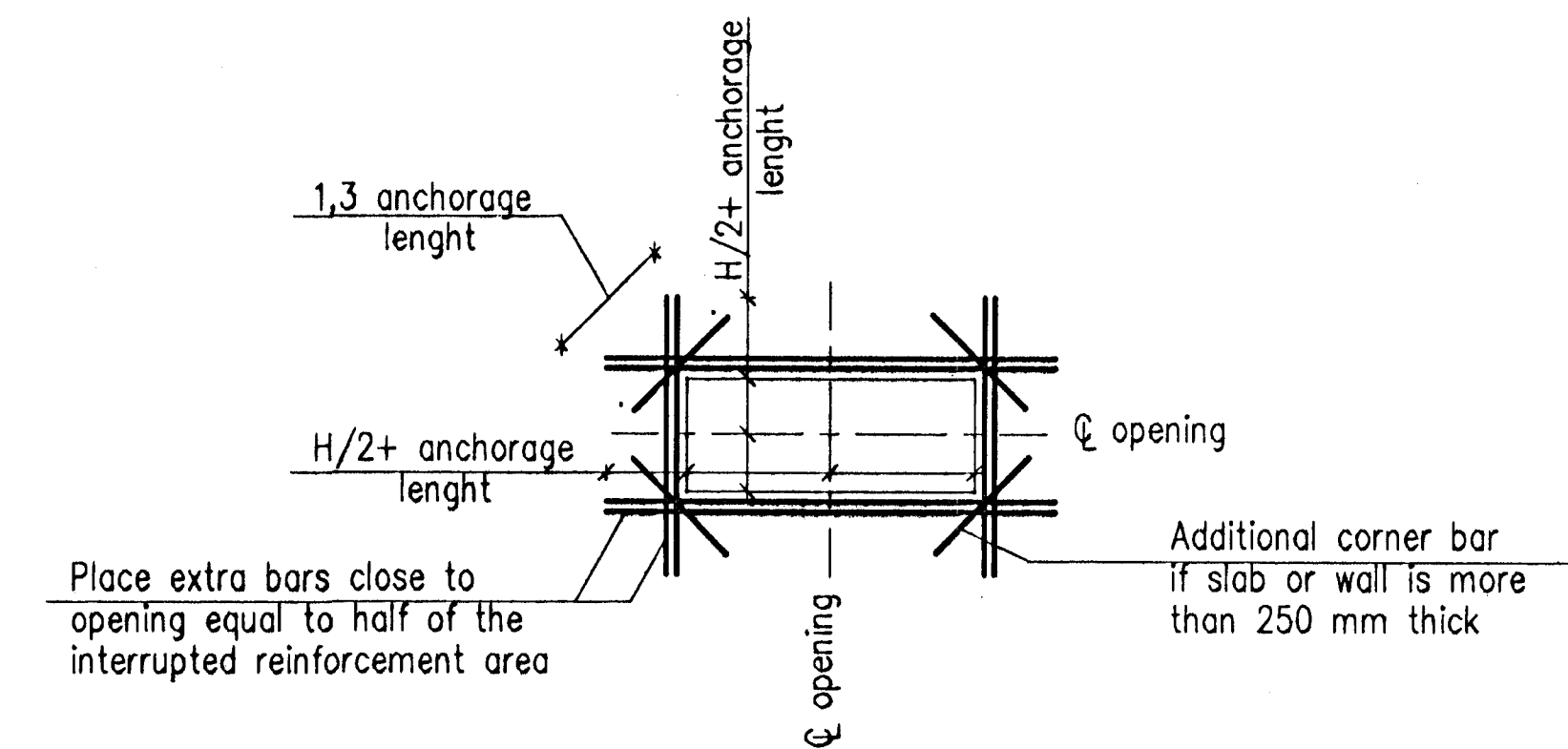


REINFORCEMENT BENDING



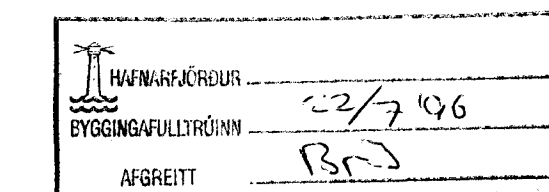
REINFORCEMENT AROUND OPENINGS

(if not shown otherwise)



COORDINATES

All coordinates are given in a local coordinate system



VST VST CONSULTING ENGINEERS Ltd. Armula 4 108 Reykjavik Iceland Tel: +354 569 5000 Fax: +354 569 5010		95.120 - 26.110															
ICELANDIC ALUMINIUM COMPANY LTD.	<table border="1"> <tr> <td>DRAWN</td> <td>06.04.10</td> <td>FGS</td> </tr> <tr> <td>APPROVED</td> <td>06.04.10</td> <td>KGS</td> </tr> <tr> <td>PROCESS</td> <td>06.04.10</td> <td>NI</td> </tr> <tr> <td>PROJECT</td> <td>06.04.10</td> <td>NI</td> </tr> <tr> <td>SCALE</td> <td>1:1</td> <td>FORMWORK</td> </tr> </table>	DRAWN	06.04.10	FGS	APPROVED	06.04.10	KGS	PROCESS	06.04.10	NI	PROJECT	06.04.10	NI	SCALE	1:1	FORMWORK	SUBSTATION 120 CONCRETE WORK GENERAL NOTES FORMWORK
DRAWN	06.04.10	FGS															
APPROVED	06.04.10	KGS															
PROCESS	06.04.10	NI															
PROJECT	06.04.10	NI															
SCALE	1:1	FORMWORK															
ALUSUISSE ALESA	ALUSUISSE ENGINEERING LTD. ZURICH SWITZERLAND	79000-35410															
ISAL	ICELANDIC ALUMINIUM CO. LTD	188.410															
This drawing is our property and given for personal use only. It may not be copied or made available to others without our permission. The receiver is responsible for any misuse.		1															

REV. NO.	DATE	REVISION	BY	APP.	REV. NO.	DATE	REVISION	BY	APP.	NOTES	REFERENCE DRAWING	DRAWING NUMBER
1	1996.07.18	APPROVED FOR CONSTRUCTION	FGS	N.I.								