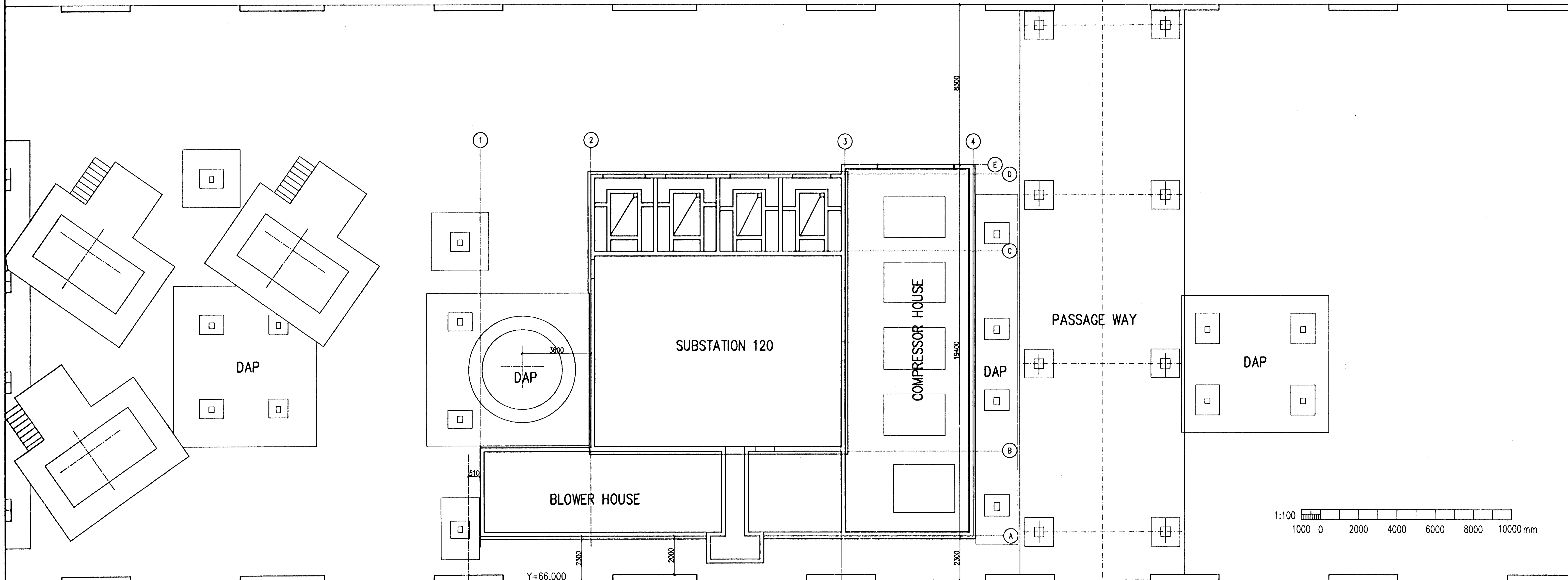


POTROOM 2



POTROOM 3

51 50 49 48 47 46 45 44 43

BYGGINGAFULLTRÚN 22/2 '96
AFBREITT R.S.

VST VST CONSULTING ENGINEERS Ltd. Armula 4 108 Reykjavik Iceland Tel: +354 569 5000 Fax: +354 569 5010		95.120 - 26.111																
ICELANDIC ALUMINIUM COMPANY LTD.	<table border="1"> <tr><td>DRAWN</td><td>98.05.30</td><td>FGS</td></tr> <tr><td>APPROVED</td><td>98.05.30</td><td>KGS</td></tr> <tr><td>PROCESS</td><td>98.05.30</td><td>NI</td></tr> <tr><td>PROJECT</td><td>98.05.30</td><td>NI</td></tr> <tr><td>SCALE</td><td>1:100</td><td>FORMWORK</td></tr> </table>	DRAWN	98.05.30	FGS	APPROVED	98.05.30	KGS	PROCESS	98.05.30	NI	PROJECT	98.05.30	NI	SCALE	1:100	FORMWORK	SUBSTATION 120 CONCRETE WORK GENERAL LAYOUT FORMWORK	
DRAWN	98.05.30	FGS																
APPROVED	98.05.30	KGS																
PROCESS	98.05.30	NI																
PROJECT	98.05.30	NI																
SCALE	1:100	FORMWORK																
ALUSUISSE ALESA	ALUSUISSE ENGINEERING LTD. ZÜRICH SWITZERLAND	79000-35411	1															
ISAL	ICELANDIC ALUMINIUM CO. LTD	188.411																

This drawing is our property and given for personal use only. It may not be copied or made available to others without our permission. The receiver is responsible for any misuse.

REV. NO.	DATE	REVISION	BY	APP.	REV. NO.	DATE	REVISION	BY	APP.	NOTES	REFERENCE DRAWING	DRAWING NUMBER
1	1998.07.18	APPROVED FOR CONSTRUCTION	FGS	N.I.								