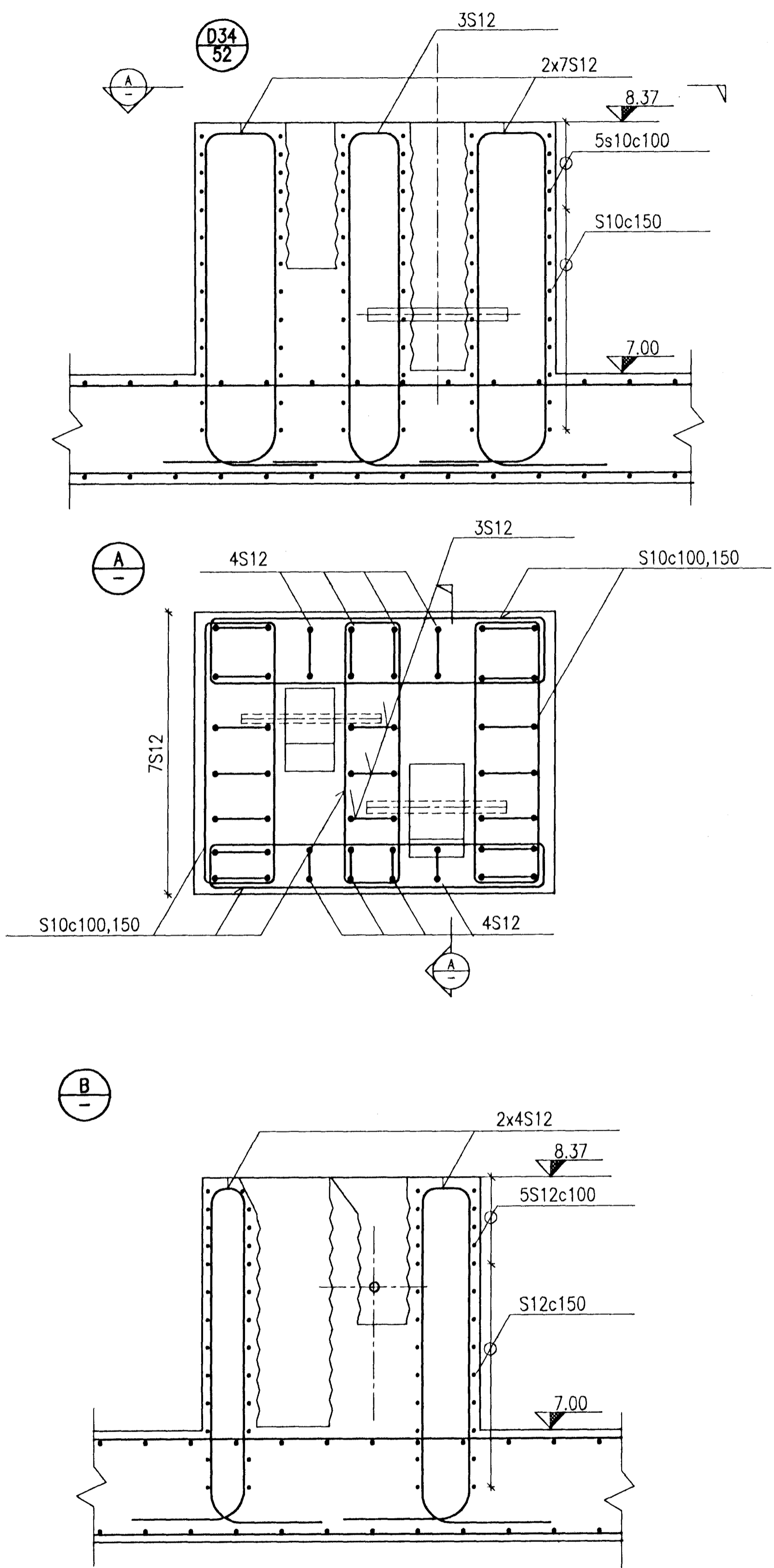
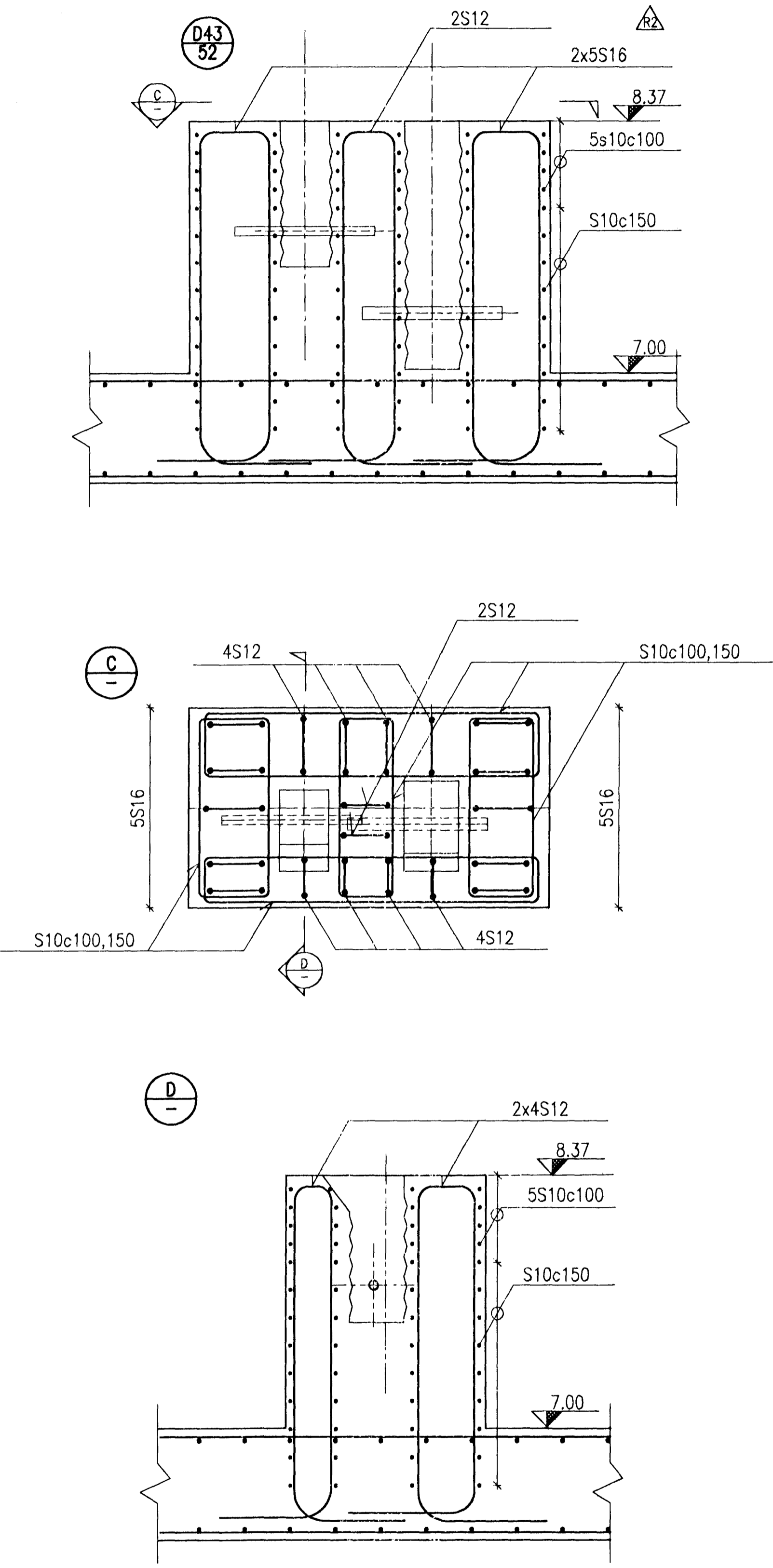


DETAIL 34



DETAIL 43



BYGGINGAFLUTNING  
14/8/96  
AFGREITT

<b>VST</b> VST CONSULTING ENGINEERS Ltd. Armula 4 108 Reykjavik Iceland Tel:+354 569 5000 Fax:+354 569 5010		95.120 - 28.058	
<b>ICELANDIC ALUMINIUM COMPANY LTD.</b>	DRAWN 98.07.19 FGS	DRY ADSORPTION PLANT	
	APPROVED 98.07.19 QSS	CONCRETE WORK	
	PROCESS 98.07.19 NI	DETAILS 34 & 43	
	PROJECT 98.07.19 NI	REINFORCEMENT	
SCALE 1:20	FORMAT A1		
<b>ALUSUISSE ALESA</b>	<b>ALUSUISSE ENGINEERING LTD. ZURICH SWITZERLAND</b>		79000-33658
<b>ISAL</b>	<b>ICELANDIC ALUMINIUM CO. LTD</b>		192.858
			2

REV. NO.	DATE	REVISION	BY	APP.	REV. NO.	DATE	REVISION	BY	APP.	NOTES	REFERENCE DRAWING	DRAWING NUMBER
2	1998.08.09	DETAIL 43, REINFORCEMENT MODIFIED.	FGS	N.I.								
1	1998.07.24	APPROVED FOR CONSTRUCTION.	FGS	N.I.								

This drawing is our property and given for personal use only. It may not be copied or made available to others without our permission. The receiver is responsible for any misuse.

