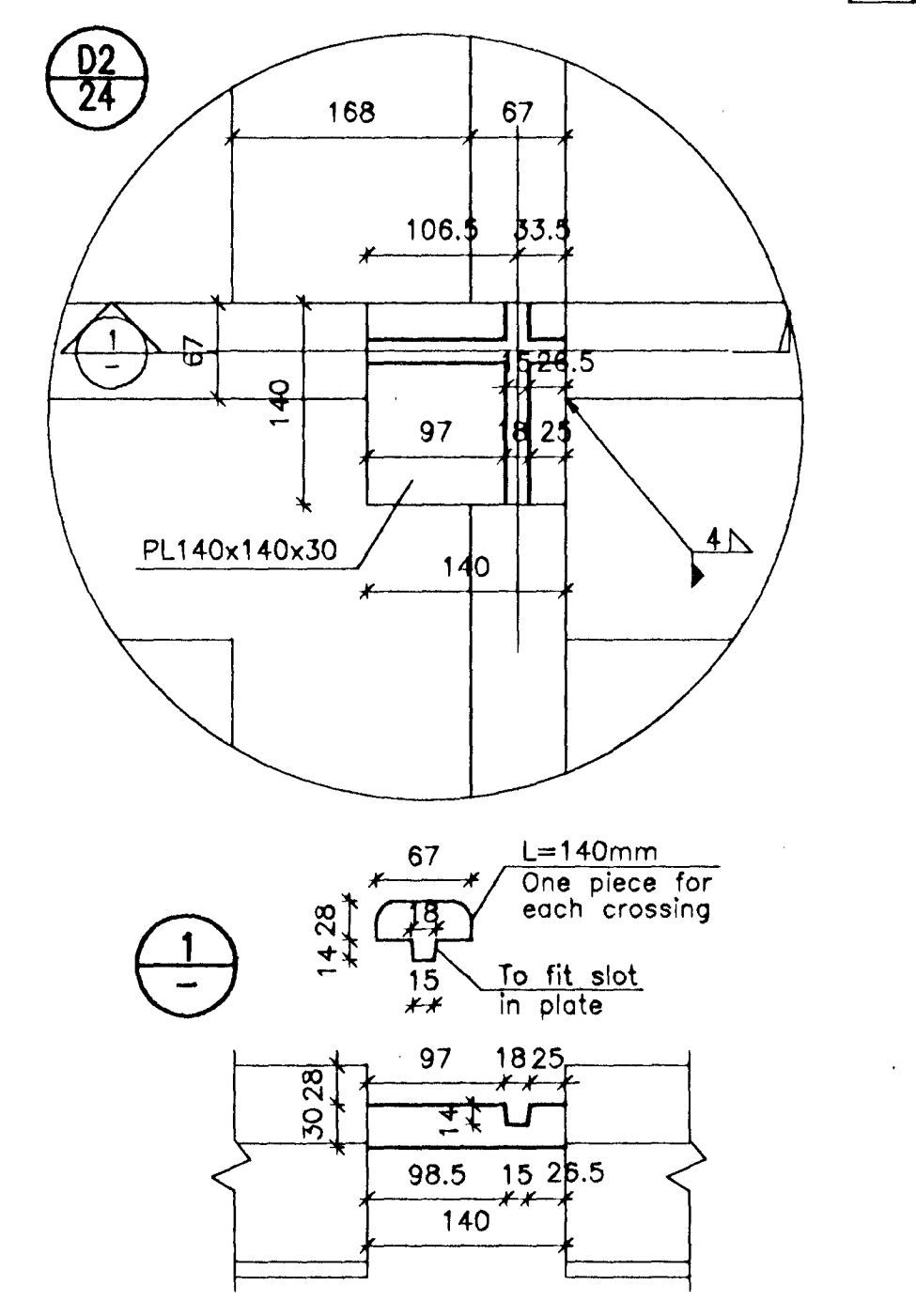


DETAIL FOR RAIL CROSSING



VST CONSULTING ENGINEERS Ltd. Armúga 4 108 Reykjavík Iceland Tel: +354 569 5000 Fax: +354 569 5010		95.120 - 26.027	
ICELANDIC ALUMINIUM COMPANY LTD.		DRAWN 98.04.09 SGI APPROVED 98.04.09 FGS PROJECT 98.04.09 NI SCALE 1:10,00	
ALUSUISSE ENGINEERING LTD. ZÜRICH SWITZERLAND		79000-35327	
ISAL		ICELANDIC ALUMINIUM CO. LTD	
This drawing is our property and given for personal use only. It may not be copied or made available to others without our permission. The receiver is responsible for any misuse.		188.327	

REV. NO.	DATE	REVISION	BY	APP.	REV. NO.	DATE	REVISION	BY	APP.	NOTES	REFERENCE DRAWING	DRAWING NUMBER
5	1996.09.10	ELEVATION OF SEGREGATION WALLS BETWEEN TRAFOS	FGS	N.I.								
4	1996.08.27	DETAIL FOR RAIL CROSSING	FGS	N.I.								
3	1996.08.09	OPENINGS ADDED/CHANGED	FGS	N.I.								
2	1996.07.10	APPROVED FOR CONSTRUCTION	FGS	N.I.								
1	1996.06.19	DETAIL D1 ADDED, CABLE CHANNEL	FGS	N.I.								