

## GENERAL NOTES

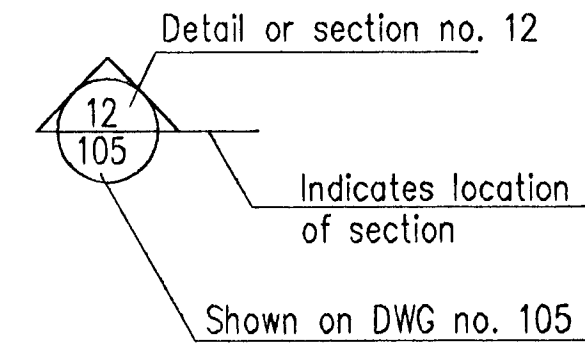
Elevations are in metres in Hafnarfjörður elevation system

Stands for elevation 0,00 m on sections

Stands for elevation 0,00 m on plans

All dimensions shown are either metres or millimetres

### SECTIONS:



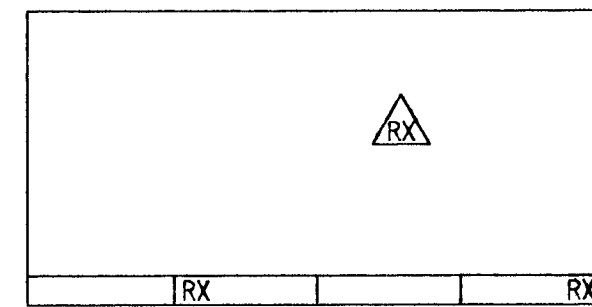
### PROFILES:

P10 = Number of profile  
110 = Reference drawing

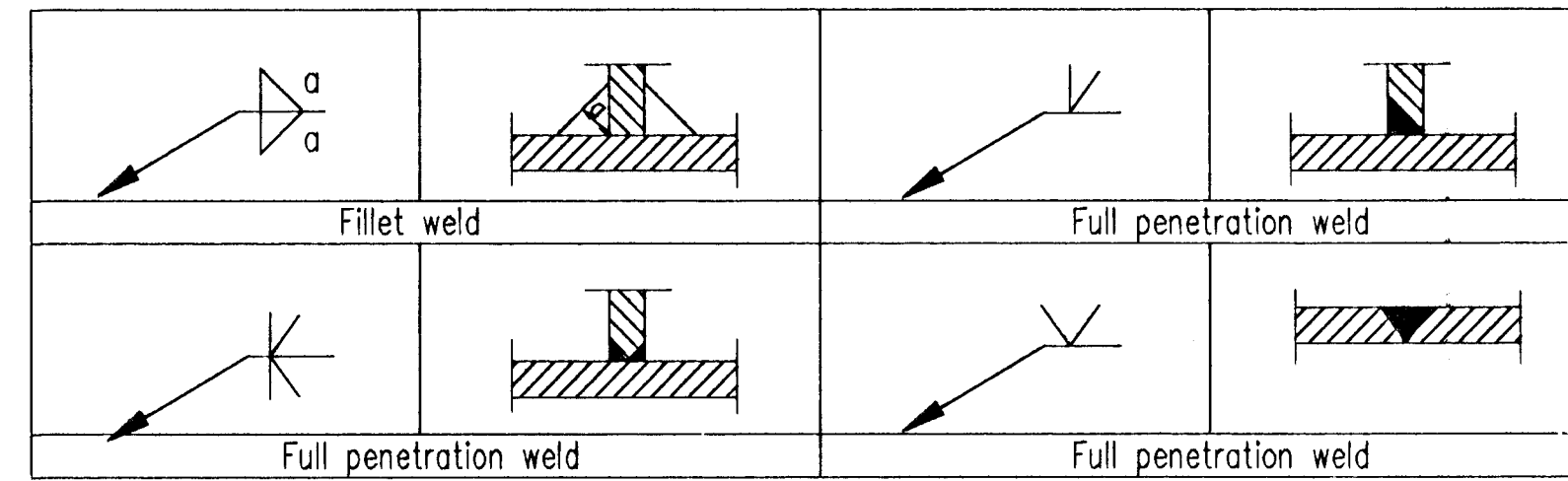
### PLATES:

X01 = Number of plate  
131 = Reference drawing

Revision no X shown on drawing:



## WELDINGS



## TIGHTENING OG BOLTS (CLASS 8.8)

BOLT diameter (mm)	TORQUE (Nm)
12	75 ± 10
16	170 ± 10
20	330 ± 20
24	560 ± 20
27	810 ± 20
30	1090 ± 20

## MATERIAL SPECIFICATIONS

Bolts: According to DIN 931 - 8.8 - hot dip galvanized  
Washers under nuts: According to DIN 7989 - hot dip galvanized  
Nuts: According to DIN 934 - 8 - hot dip galvanized  
Structural steel: Fe 360 (EN10025)

4-10-99  
HAFNARFJÖRÐUR  
BYGGINGARFRÖÐUN  
KOSTUR

**VST** VST CONSULTING ENGINEERS Ltd.  
Armsá 4 108 Reykjavík Ísland  
Tel: +354 569 5000 Fax: +354 569 5010

95.120 - 26.082

**ICELANDIC ALUMINIUM COMPANY LTD.**

DRAWN	OCT. 1995	KS
APPROVED	NOV. 1995	KS
PROCESS	NOV. 1995	NI
PROJECT	NOV. 1995	NI
SCALE		FORMAT A1

POTROOM NO. 3  
STRUCTURAL STEEL  
GENERAL NOTES

**ALUSUISSE ALESA**

ALUSUISSE ENGINEERING LTD.  
ZURICH SWITZERLAND

79000-35382

**ISAL**

ICELANDIC ALUMINIUM CO. LTD

188.382

1

REV. NO.	DATE	REVISION	BY	APP.	REV. NO.	DATE	REVISION	BY	APP.	NOTES	REFERENCE DRAWING	DRAWING NUMBER
1	1996.08.15	APPROVED FOR CONSTRUCTIONS	KS	N.I.								

This drawing is our property and given for personal use only. It may not be copied or made available to others without our permission. The receiver is responsible for any misuse.

