

GENERAL NOTES

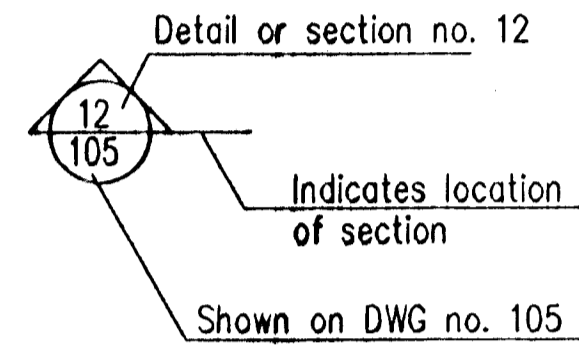
Elevations are in metres in Hafnarfjordur elevation system

0.00 - Stands for elevation 0,00 m on sections

0.00 - Stands for elevation 0,00 m on plans

All dimensions shown are either metres or millimetres

SECTIONS:



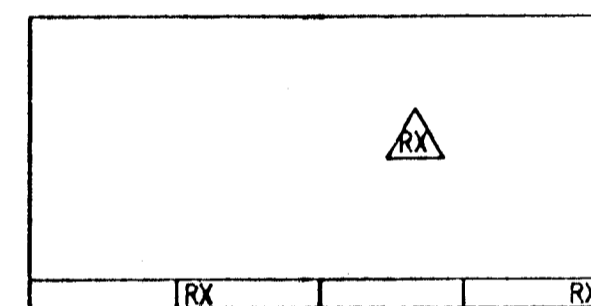
PROFILES:

P10 = Number of profile
110 = Reference drawing

PLATES:

X01 = Number of plate
131 = Reference drawing

Revision no X shown on drawing:



GENERAL NOTES FOR REINFORCEMENT

Ribbed reinforcing bars shall be of the following quality:
B500B according to pr ENV 10080, marked as K
K500TE (TEMPCORE) according to NS 3570, marked as S
Plain bars, marked as R, are of quality Fe 360

———— Ribbed bar without endhooks located in far face of a wall, or bottom face of a slab
- - - - - Ribbed bar without endhooks located in near face of a wall, or top face of a slab

⌈ K20c200-6000
Bars d=20 mm, length 6000 mm spacing 200 mm over the distance marked.
Steel quality: B500B acc.to ENV 10080

⌈ S12c200
Stirrup, d=12 mm, spacing 200 mm
Steel quality: K500TE (TEMPCORE) acc. to NS 3570

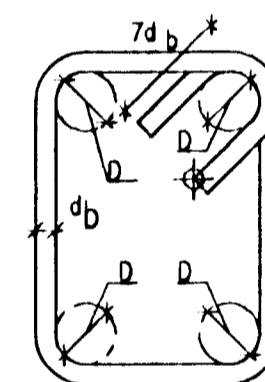
———— Bar bent anchorage length into adjoining wall, slab or beam.

⌈ (200) ⌋ Indicates thickness of construction element and direction of other bars in far face or nearer bars in near face.

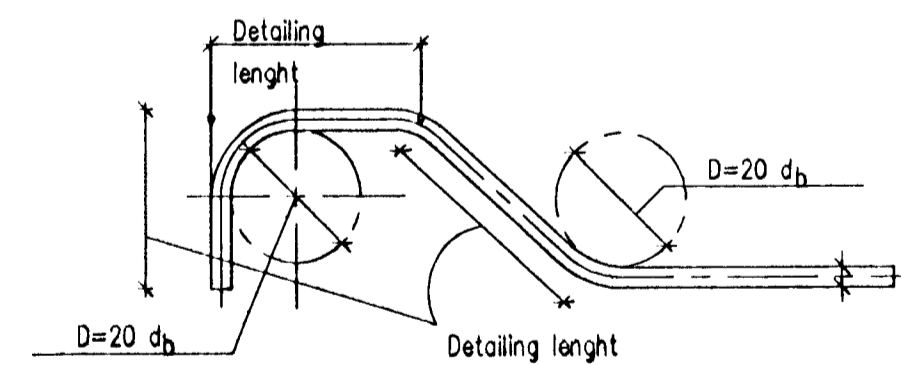
Concrete cover for reinforcement (tolerances acc. to FSENV1992)
Bottom face in foundations 50 mm
Outside surface: 40 mm
Other surfaces 30 mm

REINFORCEMENT STIRRUPS

D=3 d_b or diameter of enclosed bar

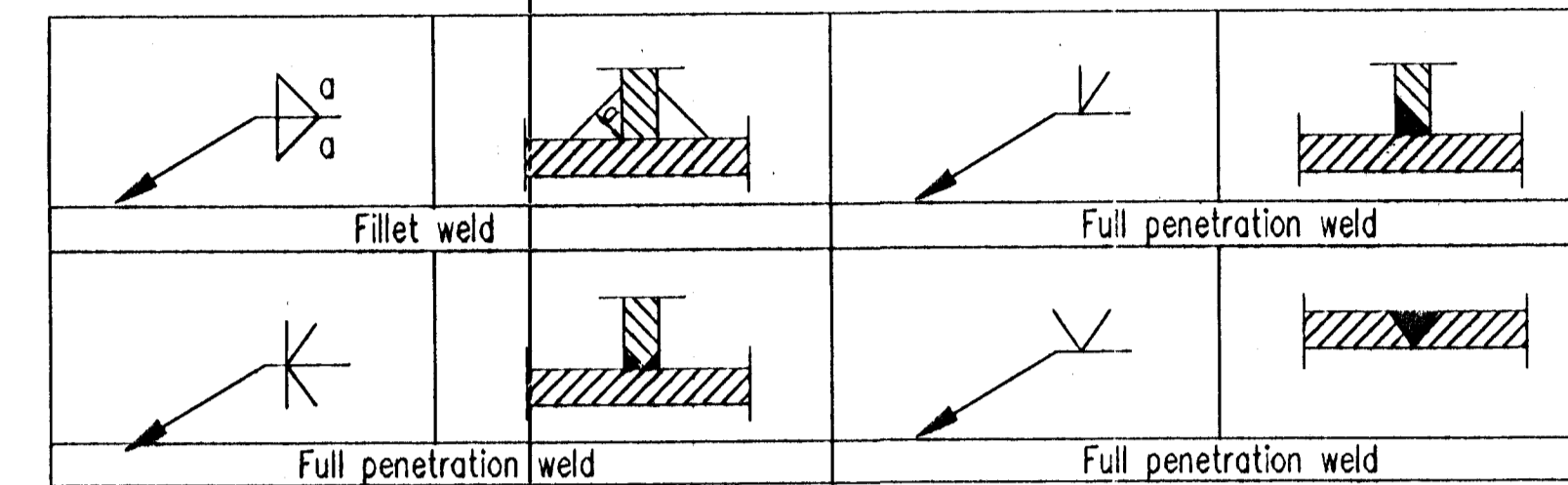


REINFORCEMENT BENDING



GENERAL NOTES FOR STRUCTURAL STEEL

WELDINGS



TIGHTENING OF BOLTS (CLASS 8.8)

BOLT diameter (mm)	TORQUE (Nm)
12	75 ± 10
16	170 ± 10
20	330 ± 20
24	560 ± 20
27	810 ± 20
30	1090 ± 20

MATERIAL SPECIFICATIONS

Bolts: According to DIN 931 - 8.8 - hot dip galvanized
Washers under nuts: According to DIN 126 C - hot dip galvanized
Nuts: According to DIN 934 - 8 - hot dip galvanized
Structural steel: Fe 360 (EN10025)
Thin plate purlins and girts: Fe 510 (EN10025) - hot dip galvanized, 275 g/m²

MANUFACTURED 4-12-97
BYGGINGAFULLTÖLUNING UB
APPREITT

VST VST CONSULTING ENGINEERS Ltd.
Armula 4 108 Reykjavik Iceland
Tel: +354 569 5000 Fax: +354 569 5010

95.120 - 36.102

ICELANDIC ALUMINIUM COMPANY LTD.

DRAWN	DEC 1998	KS
APPROVED	DEC 1998	KS
PROCESS	DEC 1998	NI
PROJECT	DEC 1998	NI
SCALE		FORMAT A1

WATER SUPPLY SYSTEM
CONSTRUCTION WORK
GENERAL NOTES

ALUSUISSE ALESA
ALUSUISSE ENGINEERING LTD.
ZURICH SWITZERLAND
ISAL
ICELANDIC ALUMINIUM CO. LTD

79000-32902

192.102

REVISION 1

REV. NO.	DATE	REVISION	BY	APP.	REV. NO.	DATE	REVISION	BY	APP.	NOTES	REFERENCE DRAWING	DRAWING NUMBER
1	3/3 '97	APPROVED FOR CONSTRUCTION	KS	A.J.								

This drawing is our property and given for personal use only. It may not be copied or made available to others without our permission. The receiver is responsible for any misuse.