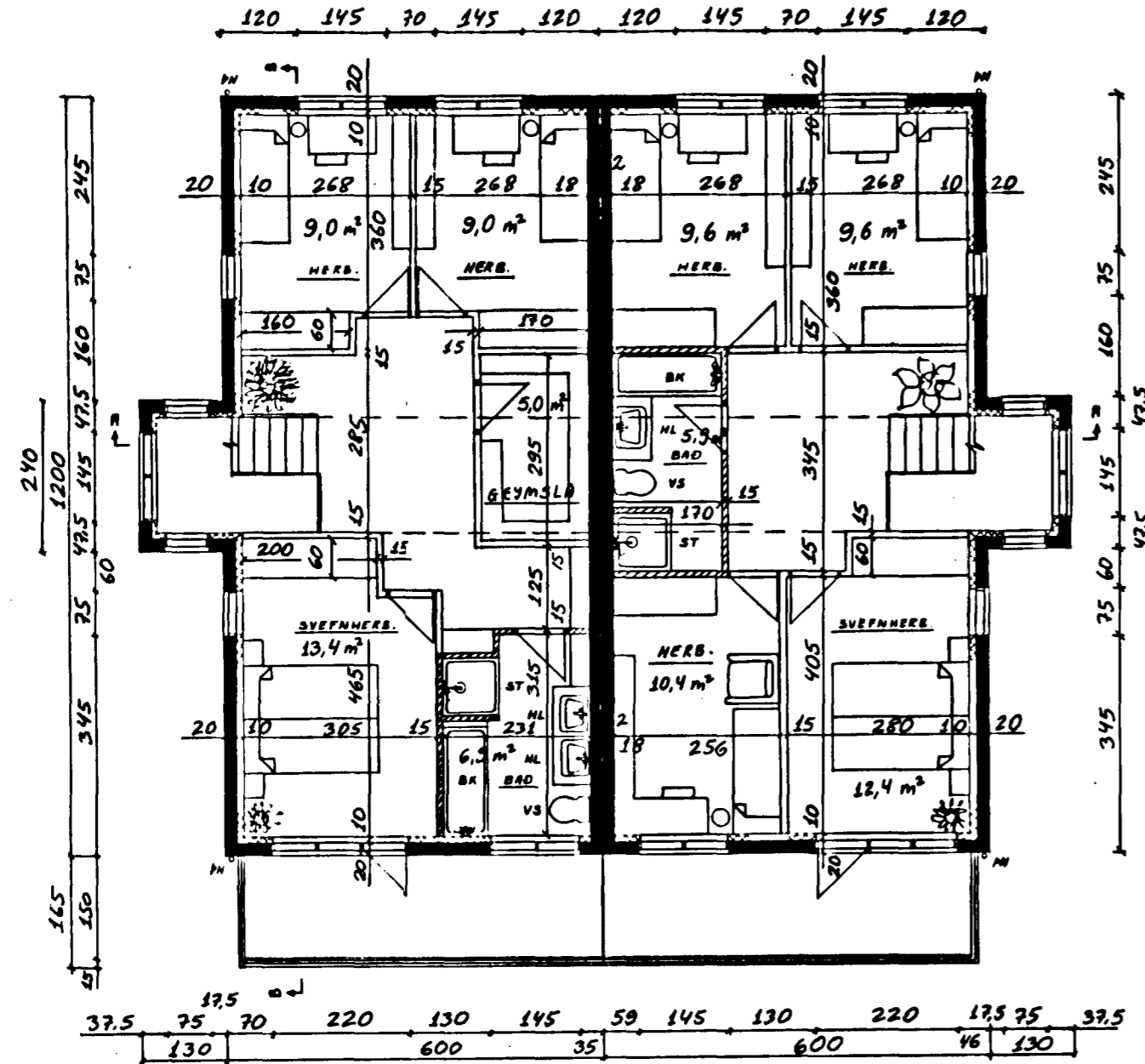
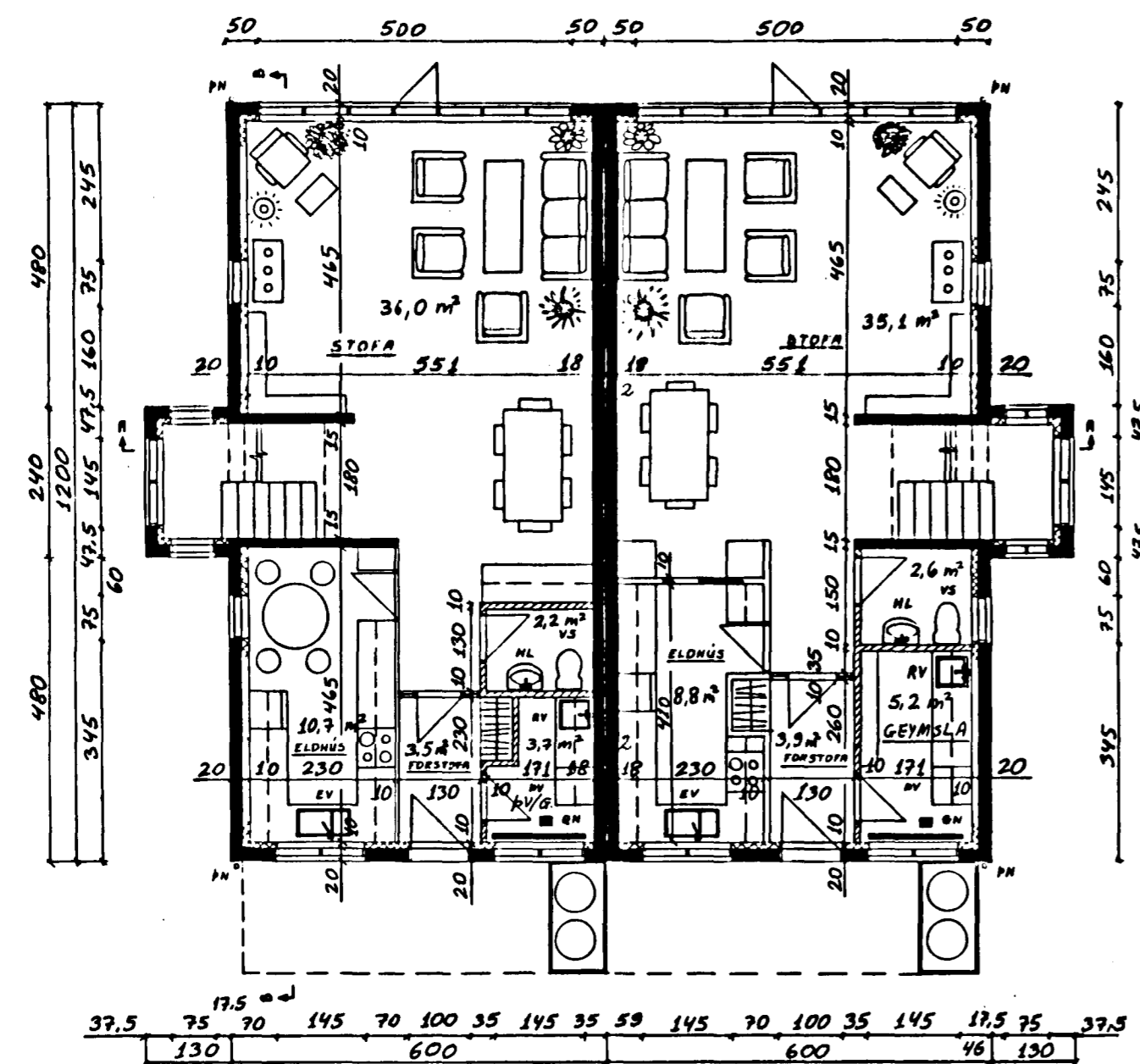


Samþykkt á fundi bygginga-
nefndar þ. 17/11 1988

BYGGINGAFULLTRÚINN
Í HAFNARFIRDI

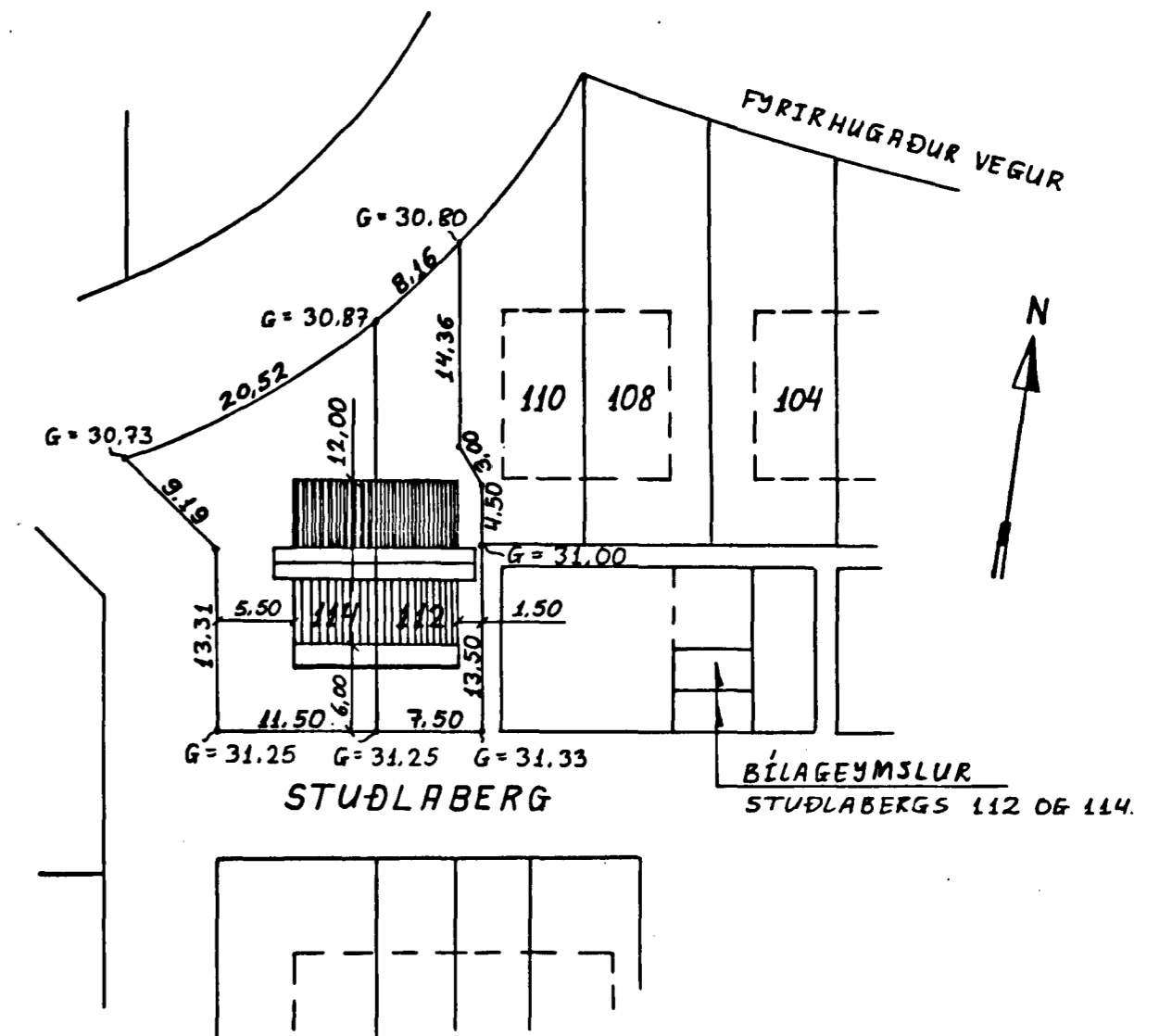


2. HÆÐ, GRUNNMYND. 1:100



1. HÆÐ, GRUNNMYND. 1:100

AFSTÖÐUMYND. 1:500



STUÐLABERG 114 STUÐLABERG 112

1. HÆÐ	75.1 m ²	202.8 m ³	75.1 m ²	202.8 m ³
2. HÆÐ	75.1 m ²	233.9 m ³	75.1 m ²	314.3 m ³
RIS	(-64.3) m ²	80.4 m ³	—	—
HEILDARGÓLFFLATARMÁL:	150.2 m ²	—	150.2 m ²	—
HEILDARRÚMMÁL:	—	517.1 m ³	—	517.1 m ³
LÖÐARSTÆRÐ:	323.1 m ²	—	221.4 m ²	—

BREYTT 27/7'88 - Jón Kristjánsson / KTALLARI BURT-GEYMSLA V/ANDDYRI
BREYTT 24/5'88 - Jón Kristjánsson / GEYMSLA FÆRÐ TIL
BREYTT 23/5'88 - Jón Kristjánsson / FM HERB.-GEYMSLU BÆTT VIÐ - MÁLSETN.