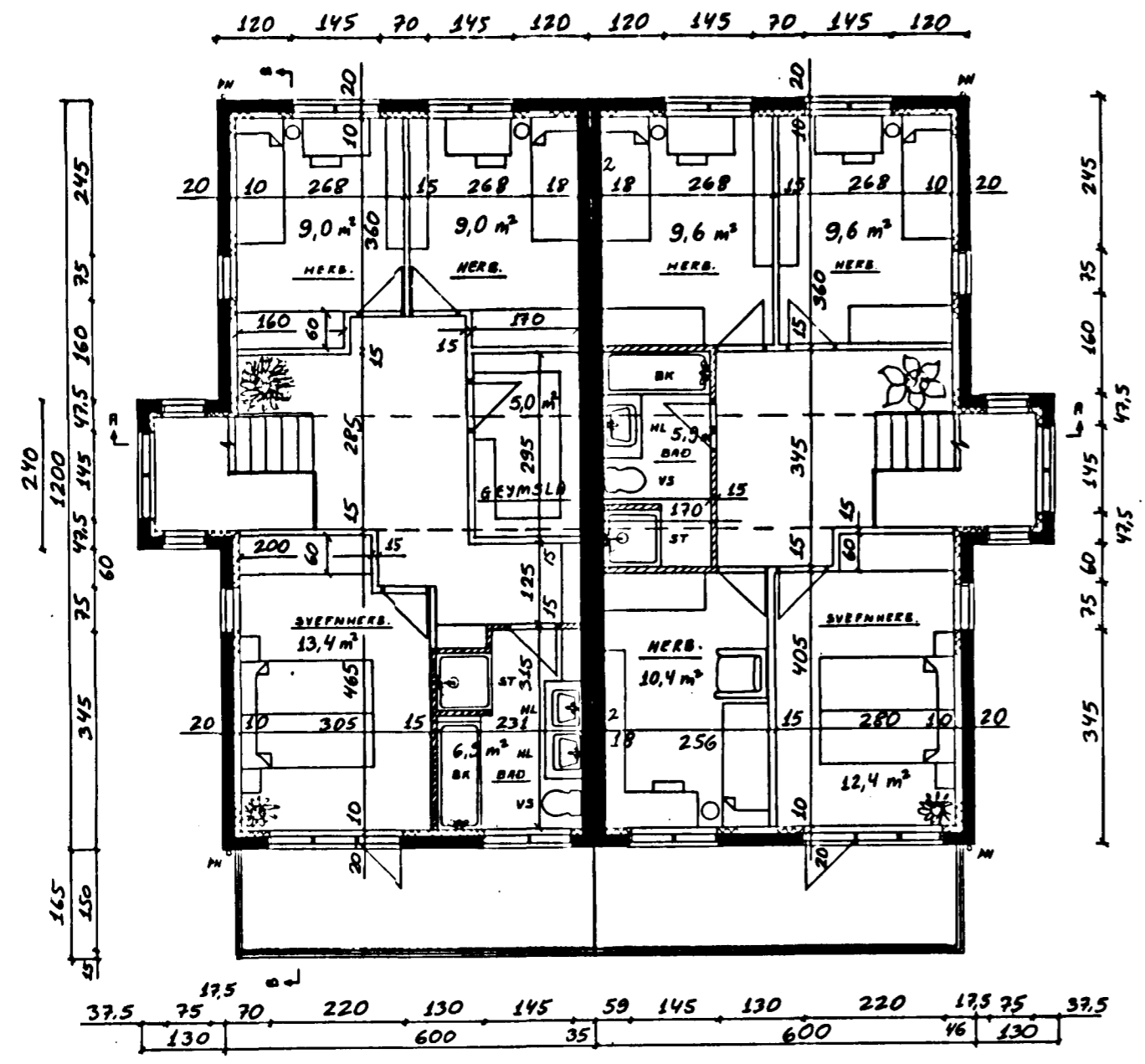
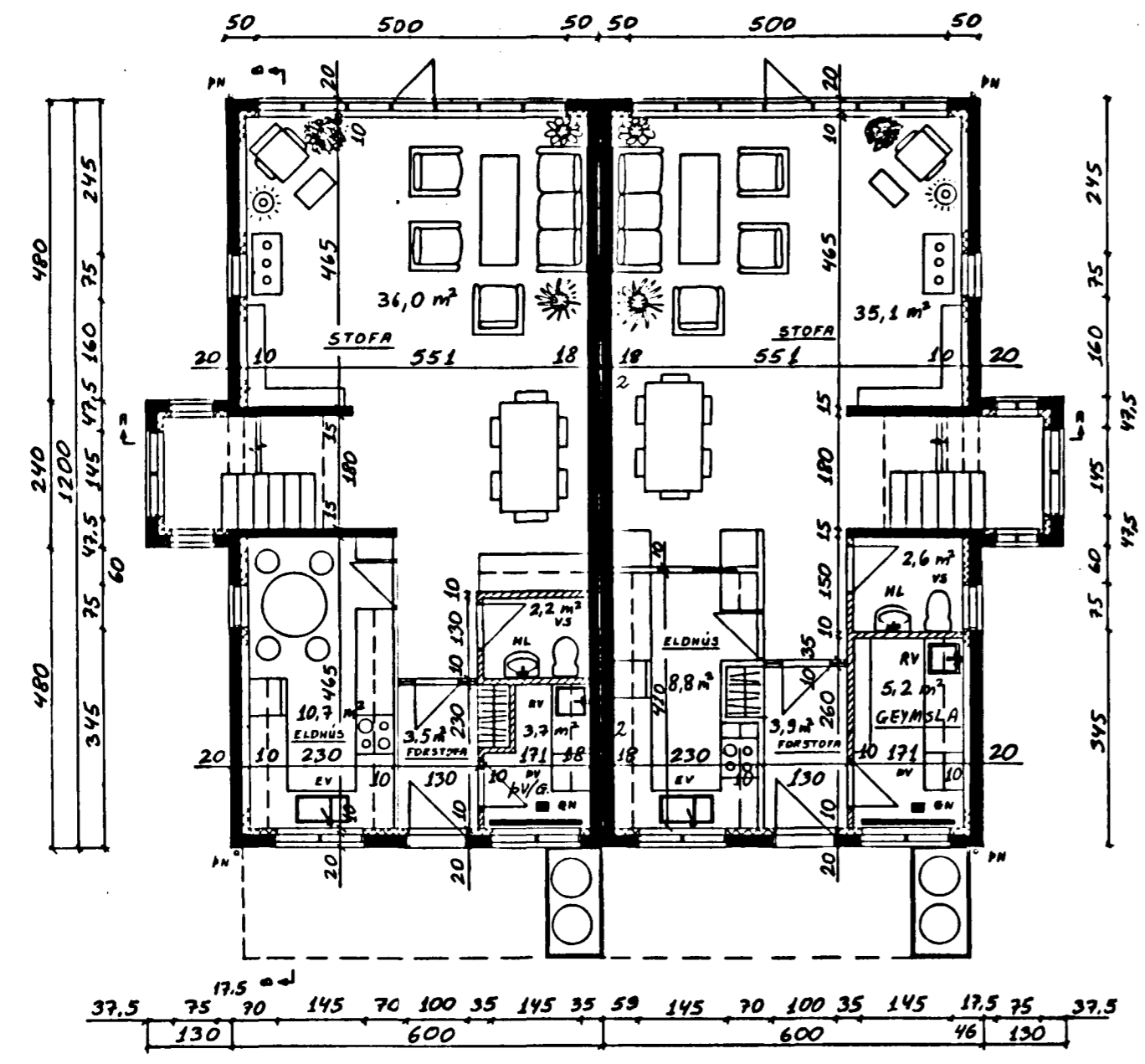


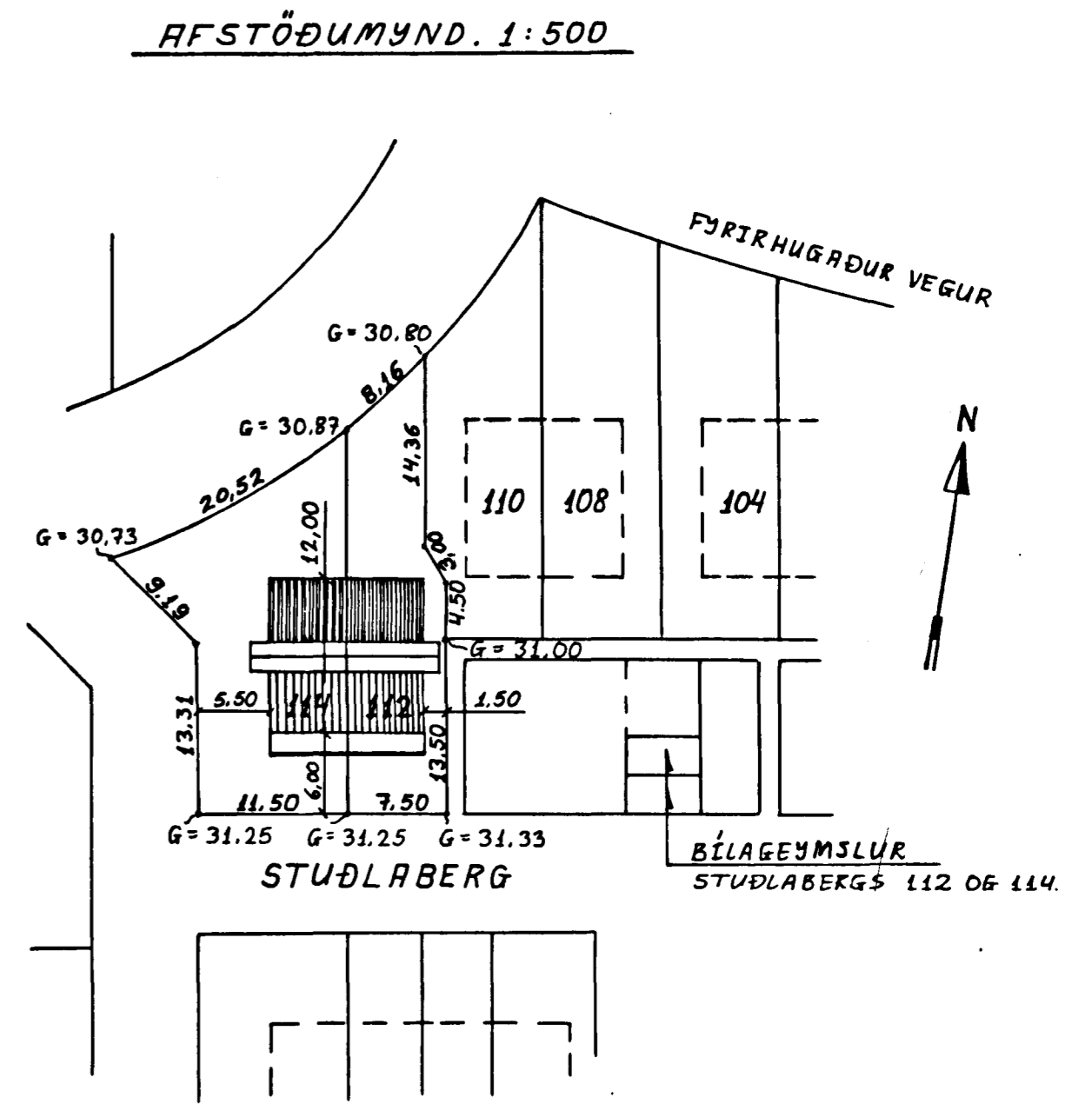
Samþykkt á fundi bygginga-  
nefndar þ. 17. 11. 1988  
BYGGINGAFULLTRÚINN  
Í HAFNARFIRÐI



2. HÆÐ, GRUNNMYND. 1:100



1. HÆÐ, GRUNNMYND. 1:100



	STUÐLABERG 114	STUÐLABERG 112
1. HÆÐ	75.1 m <sup>2</sup> 202.8 m <sup>3</sup>	75.1 m <sup>2</sup> 202.8 m <sup>3</sup>
2. HÆÐ	75.1 m <sup>2</sup> 233.9 m <sup>3</sup>	75.1 m <sup>2</sup> 314.3 m <sup>3</sup>
RIS	(64.3) m <sup>2</sup> 80.4 m <sup>3</sup>	— —
HEILDARGÓLFFLATARMÁL:	150.2 m <sup>2</sup> —	150.2 m <sup>2</sup> —
HEILDARRÚMMÁL:	— 517.1 m <sup>3</sup>	— 517.1 m <sup>3</sup>
LÖÐARSTÆRÐ:	323.1 m <sup>2</sup> —	221.4 m <sup>2</sup> —

BREYTT 23/7'88 - Jón Kristjánsson / KJALLARI BURT - GEYMSLA V/ANDDYRI  
BREYTT 24/5'88 - Jón Kristjánsson / GEYMSLA FÆRÐ TIL  
BREYTT 23/5'88 - Jón Kristjánsson / FM HERB. - GEYMSLU BÆTT VID - MÁLSETN.