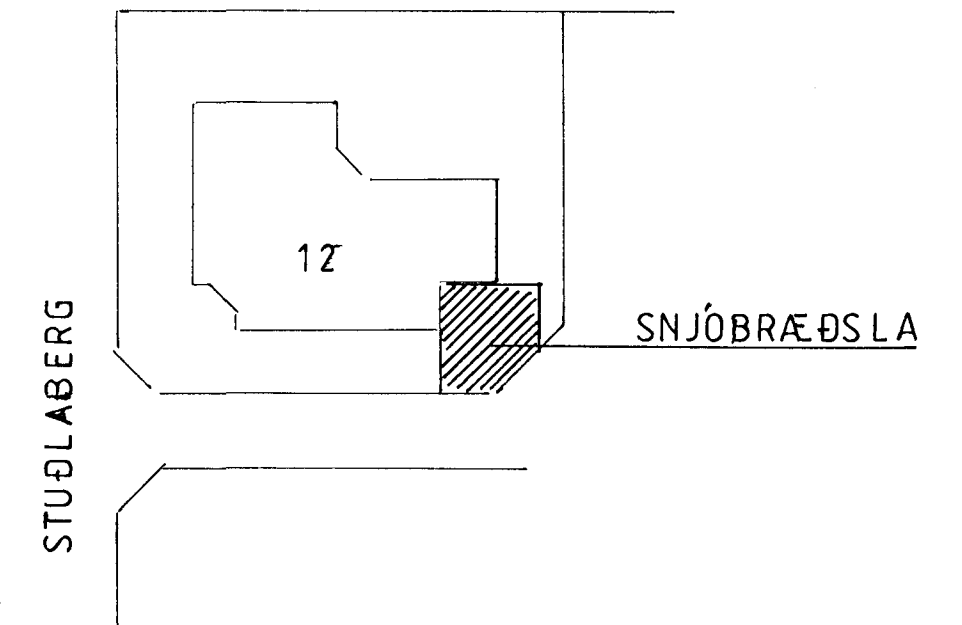
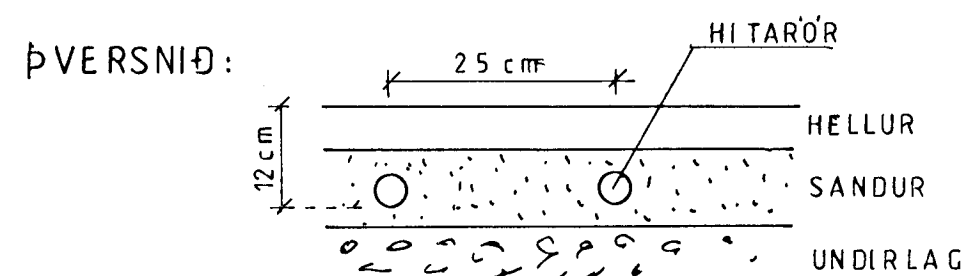
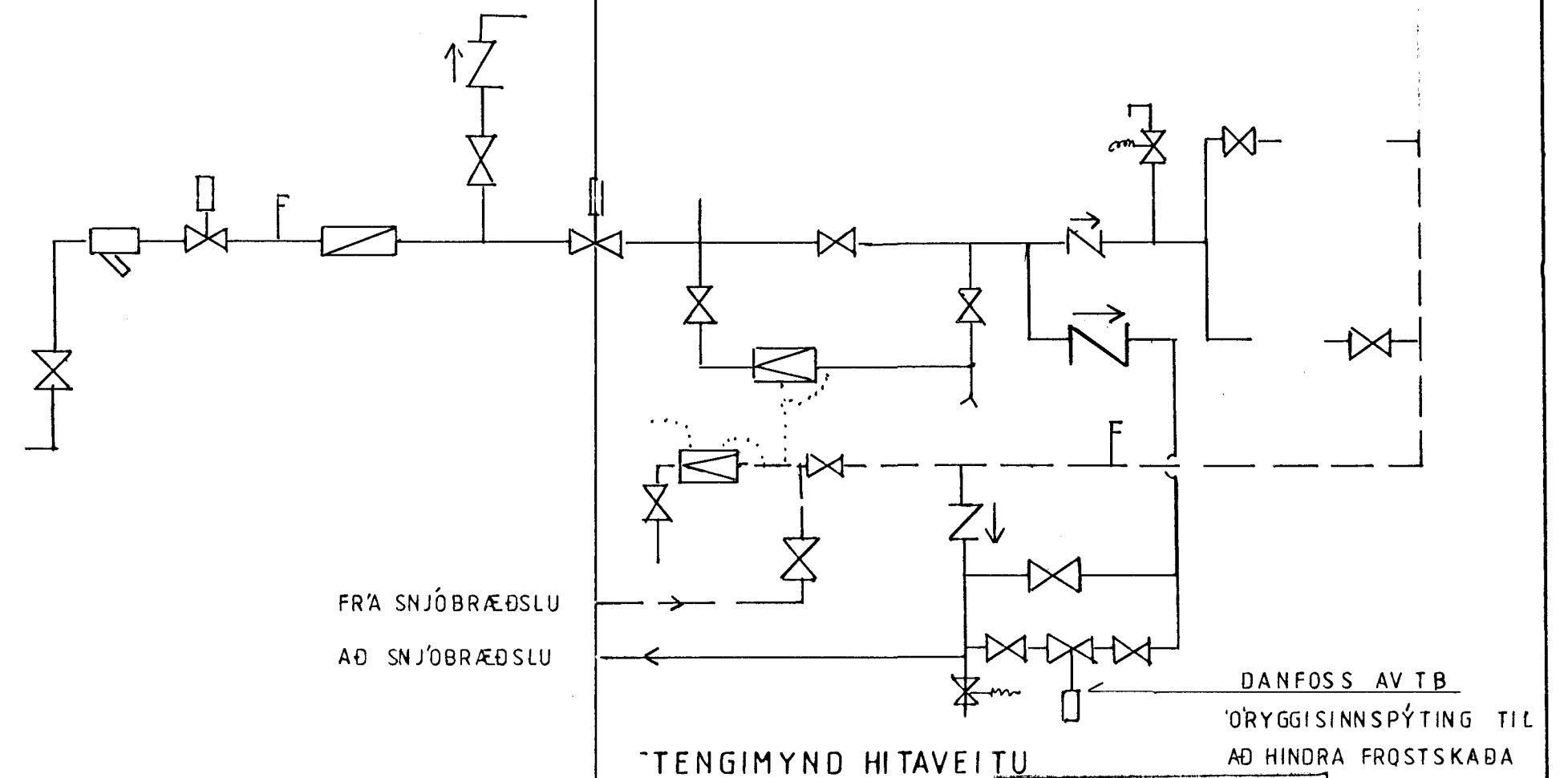


SKÝRINGAR: ——— SNJÓBRÆÐSLULÖGN „FRAMRÁS“
 - - - - - " " " „BAKRÁS“
 UPPHITAÐ SVÆÐI 45 m²
 LENGÐ RÖRA 188 m
 AFKÖST SNJÓBRÆÐSLU 175 W/m²
 45 m² x 175 W/m² = 7875 W
 UMFRAMORKA HÚSS 11.000 W



AFSTAÐA 1:500



Byggingafulltrúll Hafnarfjarðar
 Afgreitt þann
 25 JULI 1996
 Sigurbjartur Halldórsson

STUÐLABERG 12, HAFNARFIRÐI	MKV. 1:50 1:500	DAGS. 20.07.96
SNJÓBRÆÐSLA Í INNKEYRSLU	TEIKN.NR 5.1	
ASMUNDUR SIGVALDASON, STUÐLABERG 12 MVFÍ s.555 3976 <i>Asmundur Sigvaldason</i>		