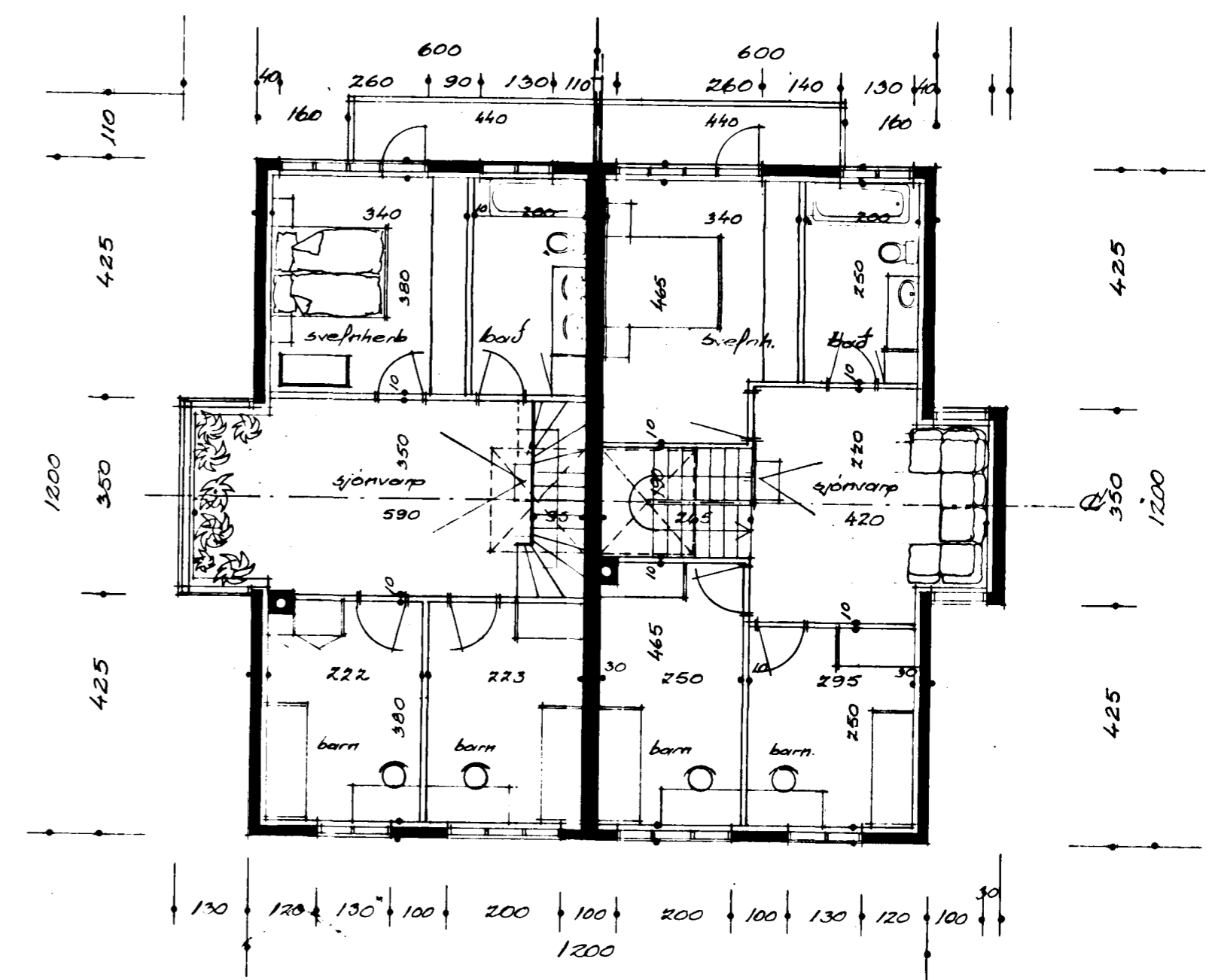
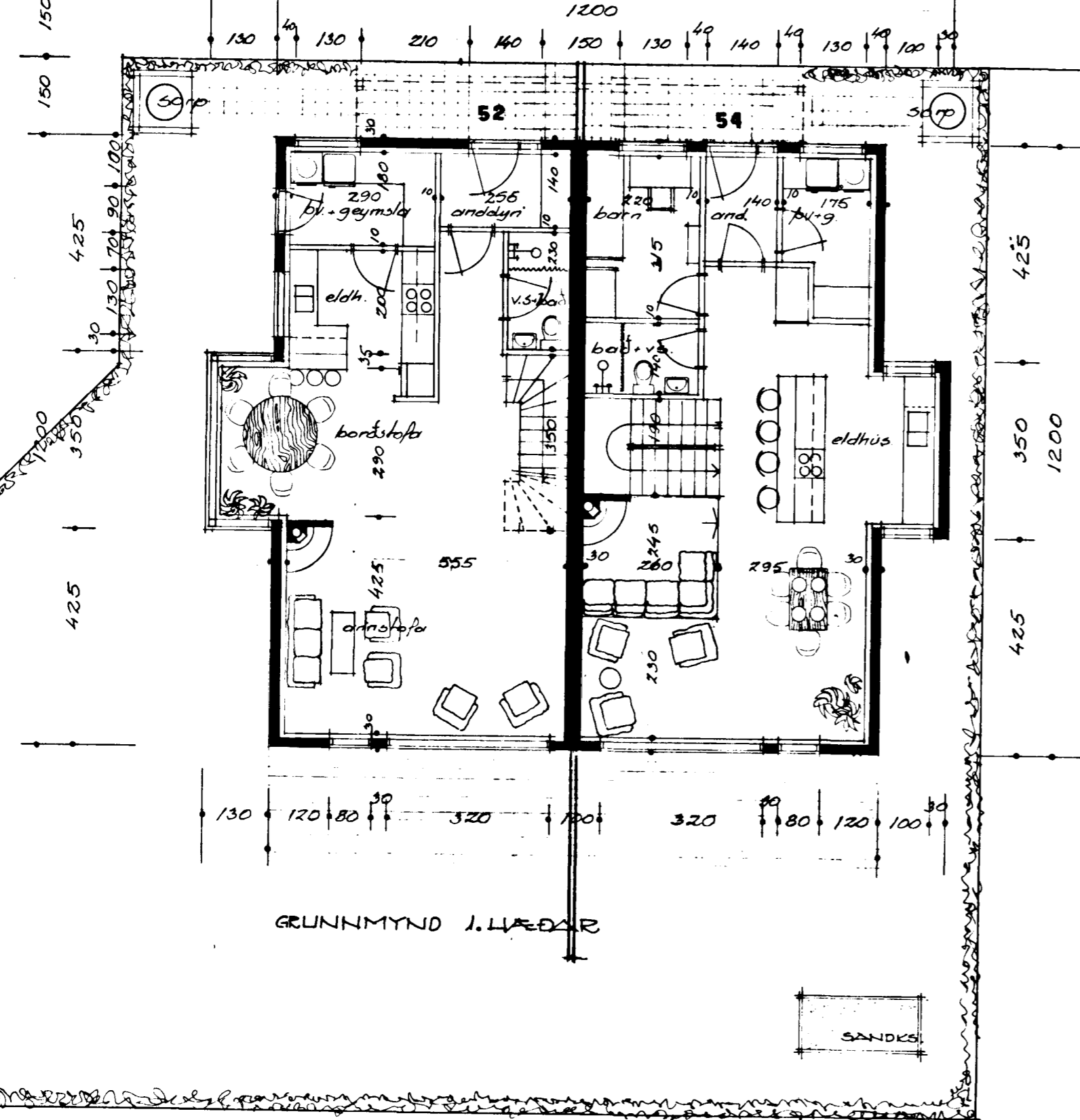
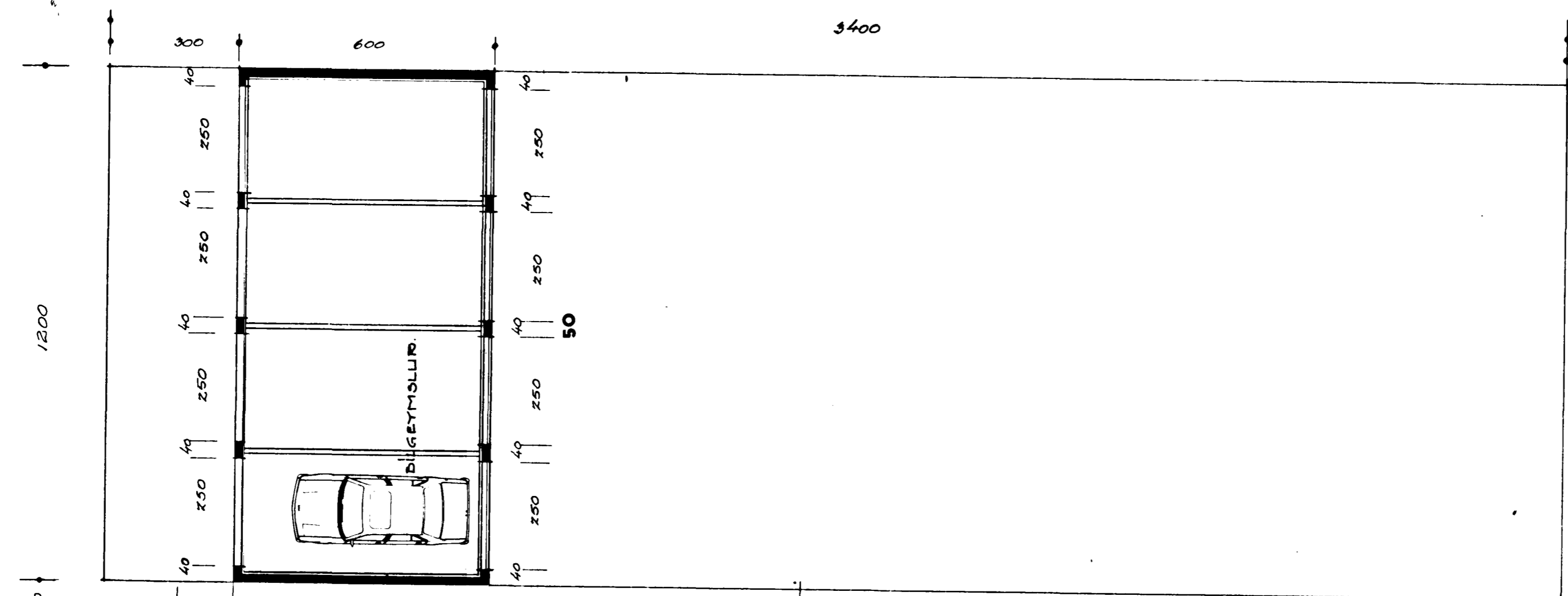


Samþykkt á fundi bygginga-  
nefndar þ. 28.4. 1988  
7/0898.4. smþ  
BYGGINGAFULLTRUINN  
Í HAFNARFIRDI

Ganga skil frá opnu  
eldisúti í baðsemi  
við inngangurinn

*Baldvin Einarsson*  
Byggingafræðingur



	52
1.H	76.6m <sup>2</sup>
2.H	76.6m <sup>2</sup>
RIS.	17.8m <sup>2</sup>
SANT	181.0m <sup>2</sup>
ÞUMMAL	525m <sup>3</sup>

STUÐLABERG 52 OG 54 HAFNARF.  
GRUNNMYNDIR 1:100  
MÁRÍ 1988

BALDVIN EINARSSON BYGGINGAFRÆÐINGUR S:21863  
*Baldvin Einarsson*