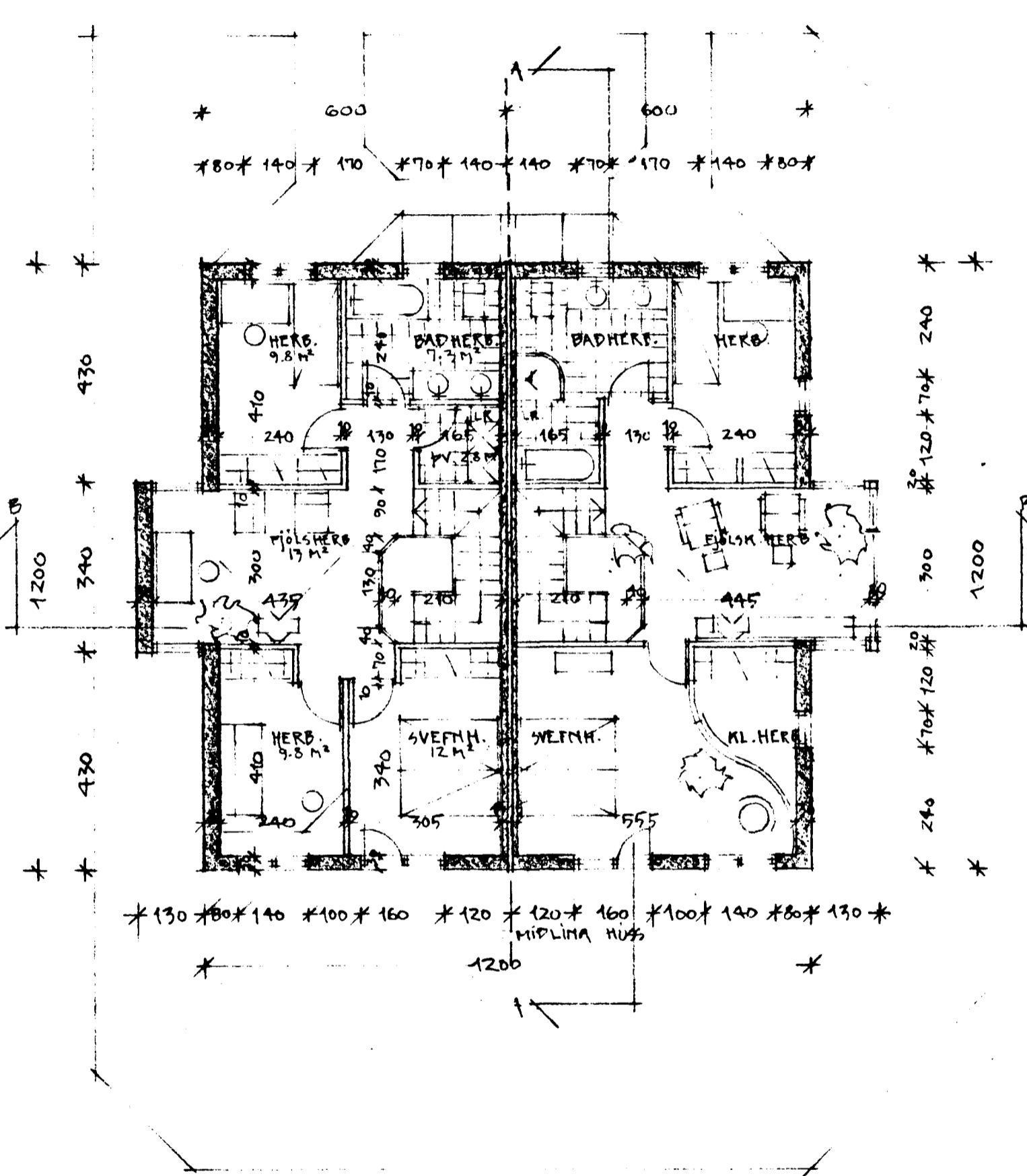
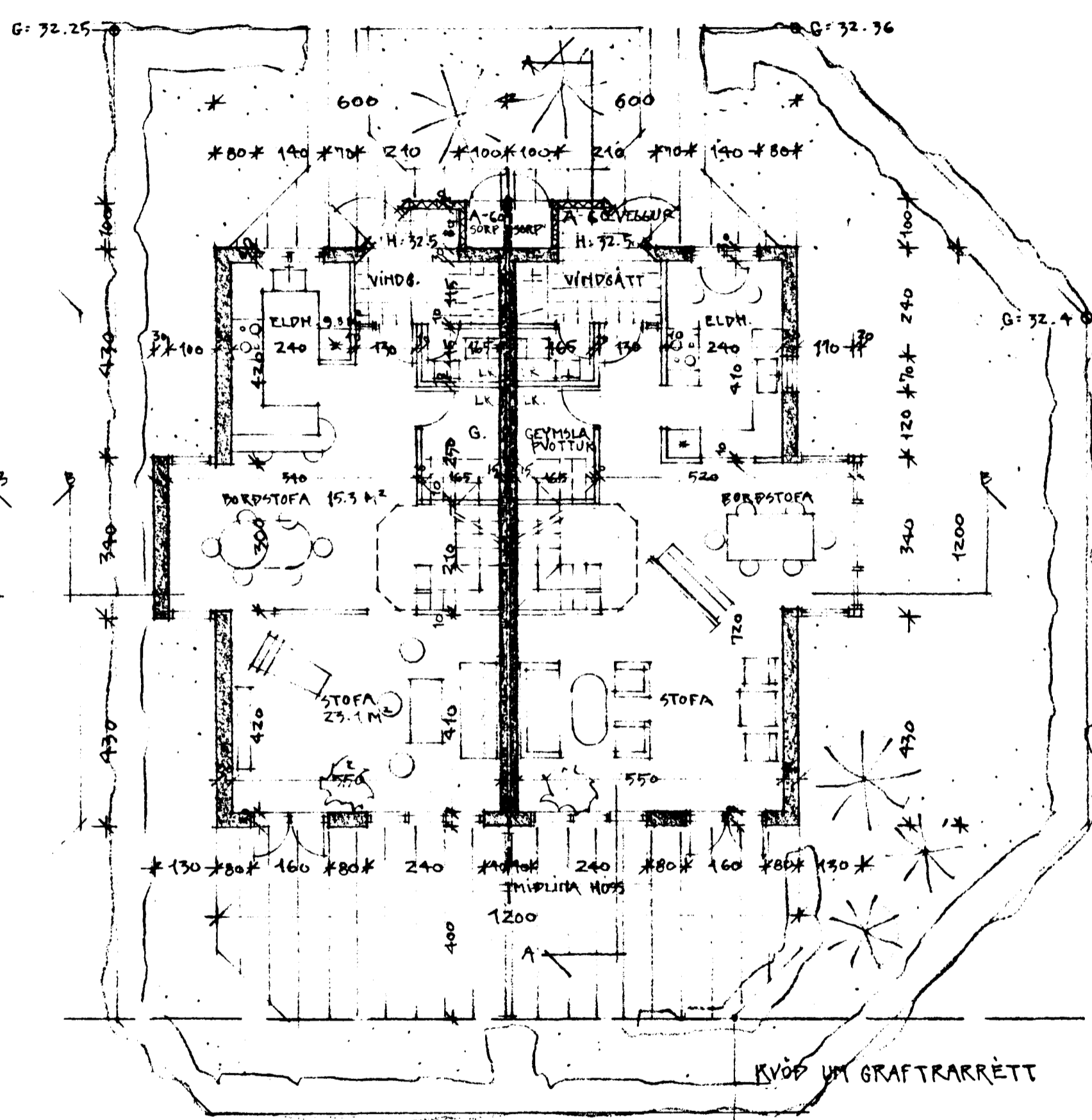


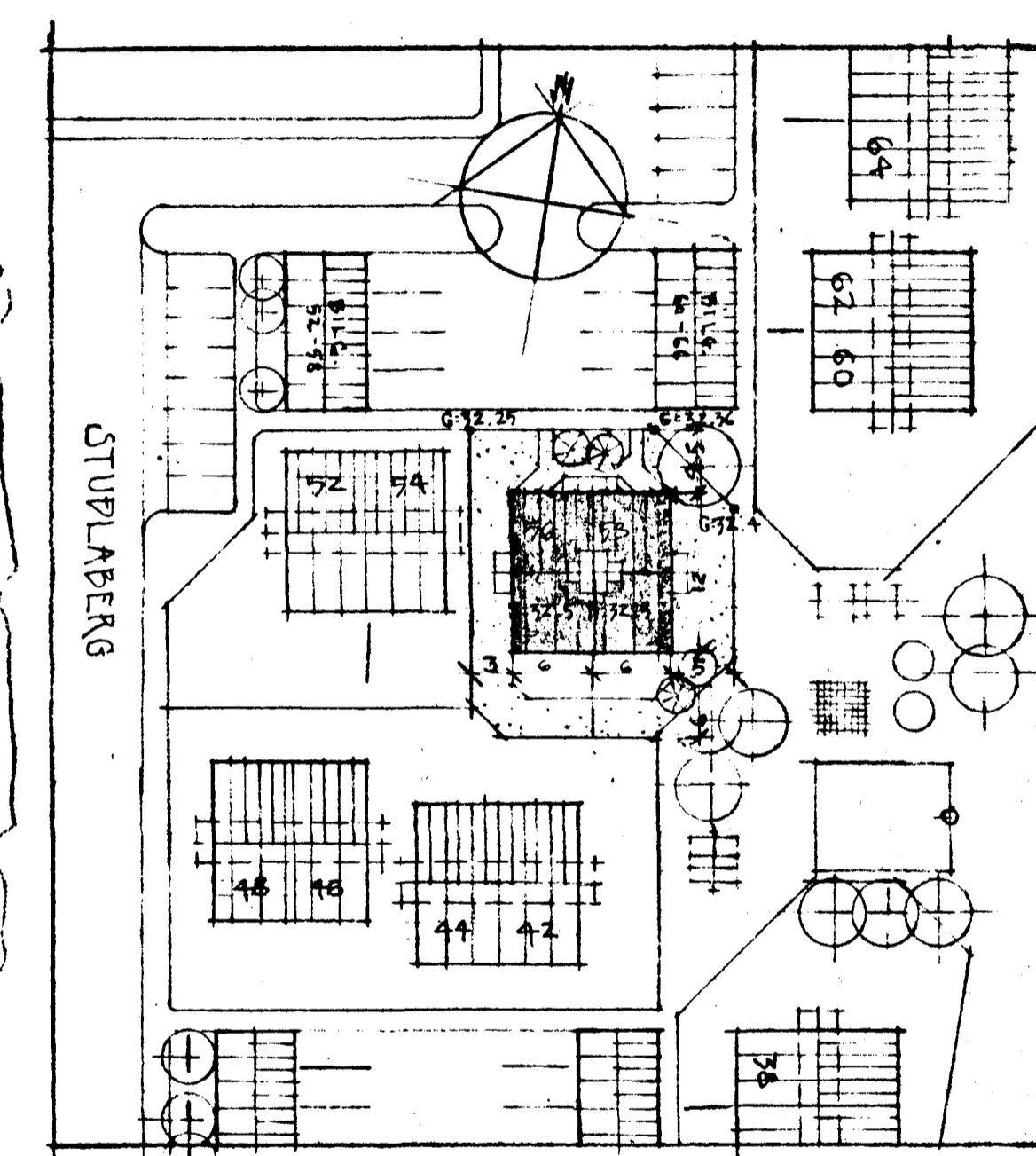
*Big desk*  
 Samþykkt á fundi bygginga-  
 nefndar þ. 11.18.1988  
 BYGGINGAFULLTRÚINN  
 Í HAFNARFIRDI  
*[Signature]*



GRUNNMYND, 2. HÆÐ



GRUNNMYND, 1. HÆÐ



AFSTÖPUMYND 1:500

STUÐLABERG	56	58	HEILD
FLATARMÁL 1. HÆÐ	76.8 m <sup>2</sup>	76.8 m <sup>2</sup>	153.6 m <sup>2</sup>
FLATARMÁL 2. HÆÐ	76.8 m <sup>2</sup>	76.8 m <sup>2</sup>	153.6 m <sup>2</sup>
ALLS	153.6 m <sup>2</sup>	153.6 m <sup>2</sup>	307.2 m <sup>2</sup>
FLATARMÁL LÖD	178.0 m <sup>2</sup>	234.0 m <sup>2</sup>	412.0 m <sup>2</sup>
HYTINGARHLUTFALL	0.82 %	0.63 %	0.71 %
RÚMMÁL	464.3 m <sup>3</sup>	464.3 m <sup>3</sup>	928.6 m <sup>3</sup>

ATM: ÚTVEGGIR ERU LOFTORRU-SAMLÖKVEIMINGAR.  
 INNST ER 13 CM BÚRDARVEGGUR ÖR STEINSTEYPU.  
 YST ER 7CM STEINSTEYPTUR VEGGUR, 0.6 A MILLI  
 ÞESSARA VEGGJA ER 40 CM EIMANGRUN.  
 LÉTTUR VEGGUR Á MILLI AMDDYRA OG SORPS ER  
 A-60 VEGGUR.  
 BÆYTING 26.07.88: STAÐSETNING HÚSS FLUTT UM  
 100 CM TIL AUSTURS

STUÐLABERG 56-58, HAFNARFIRDI  
 AFSTÖPUMYND 1:500  
 GRUNNMYNDIR 1. OG 2. HÆÐAR 1:100  
 12.05.88 *Hafdis Hafliadóttir*  
 HAFDIS HAFLIÁÐOTTIR, ARKITEKT FAI  
 SELJABRAUT 42, REYKJAVÍK.

*[Signature]*