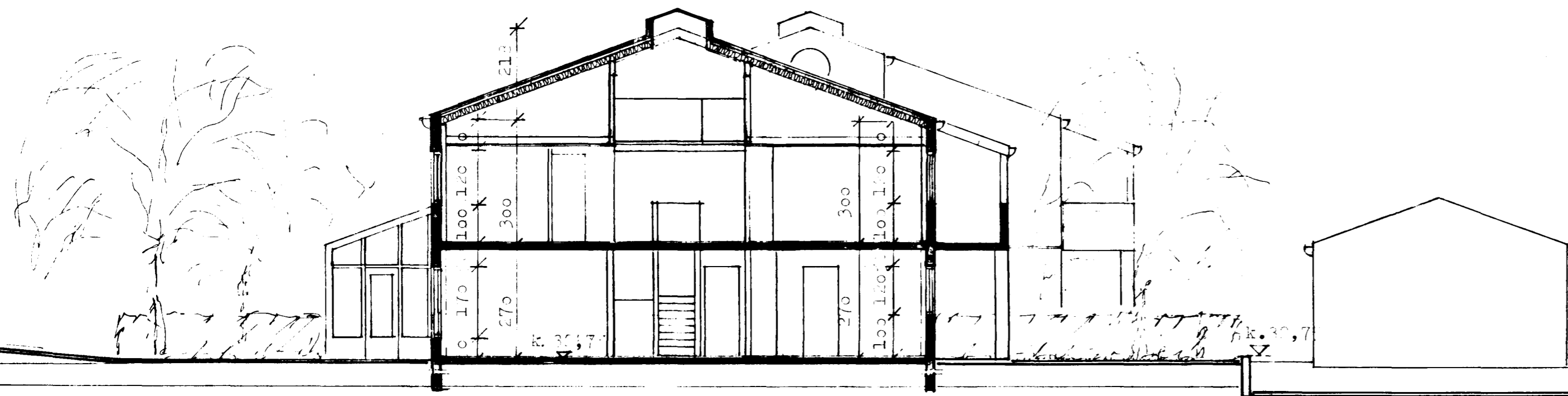
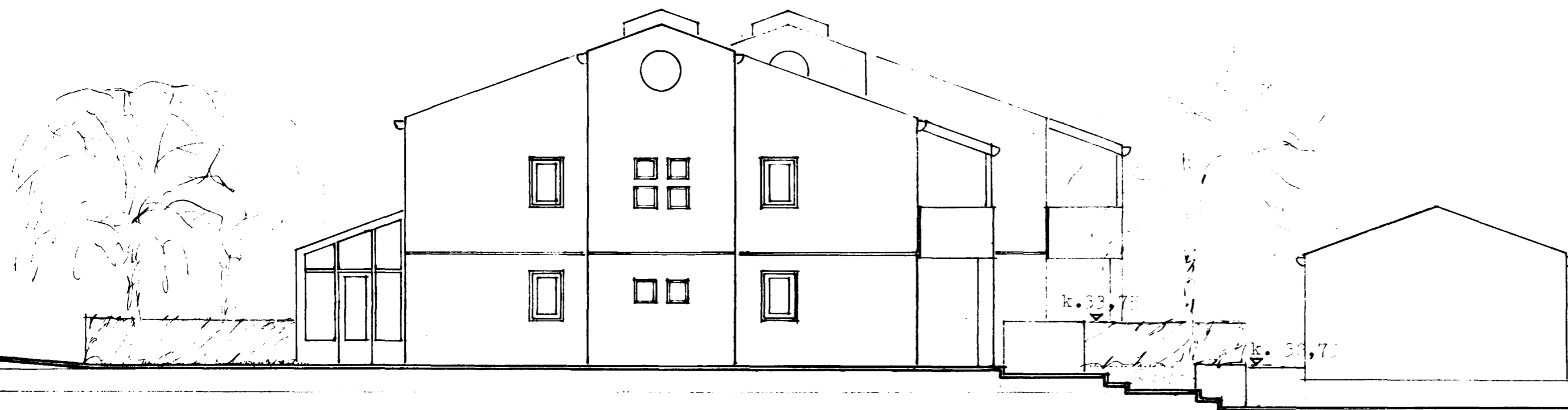


Samþykkt á fundi bygginga-  
23/6 88  
nefndar þ. 6/7 1988  
BYGGINGAFULLTRÚINN  
Í HAFNARFIRÐI  
*[Signature]*



Þverskurður austur - vestur



norðurgæfl

STUDLABERG 66, HAFNARFIRÐI gæflmynd  
m. 1:100.

Ejörn H. Jóhannesson arkitekt F.A.I.  
Njálsgötu 10 Rvík s. 10030  
maí '88 br. júní '88 br. 3/7 '89

*[Signature]*