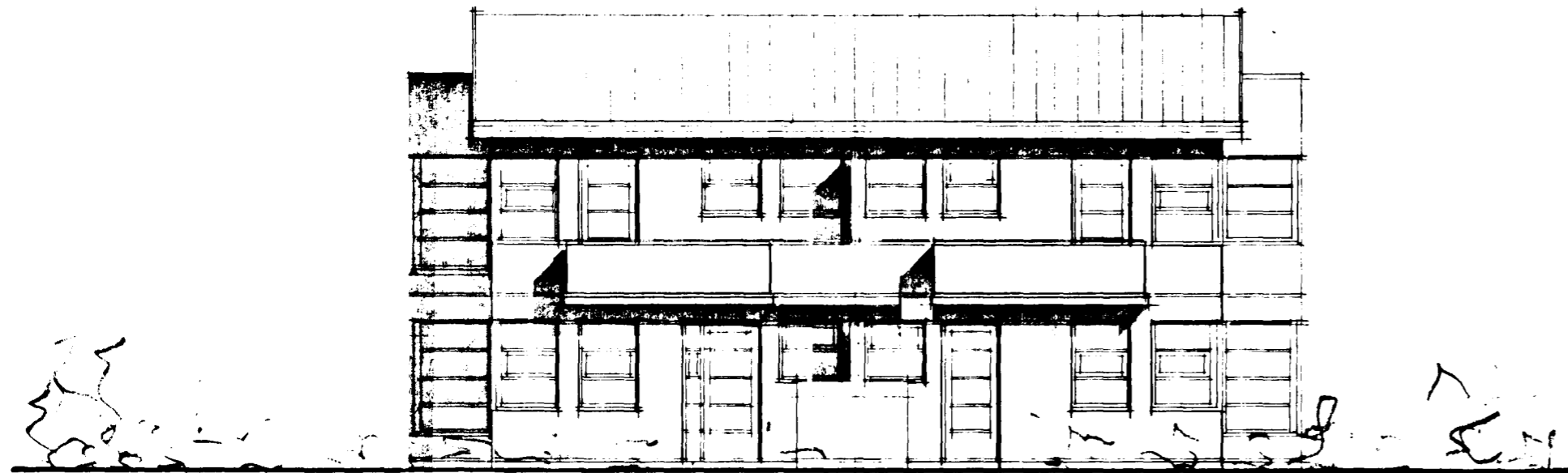


Samþykkt á fundi bygginga-
nefndar þ. 24/3 1988
BYGGINGAFULLTRÚINN
Í HAFNARFIRDI
[Signature]

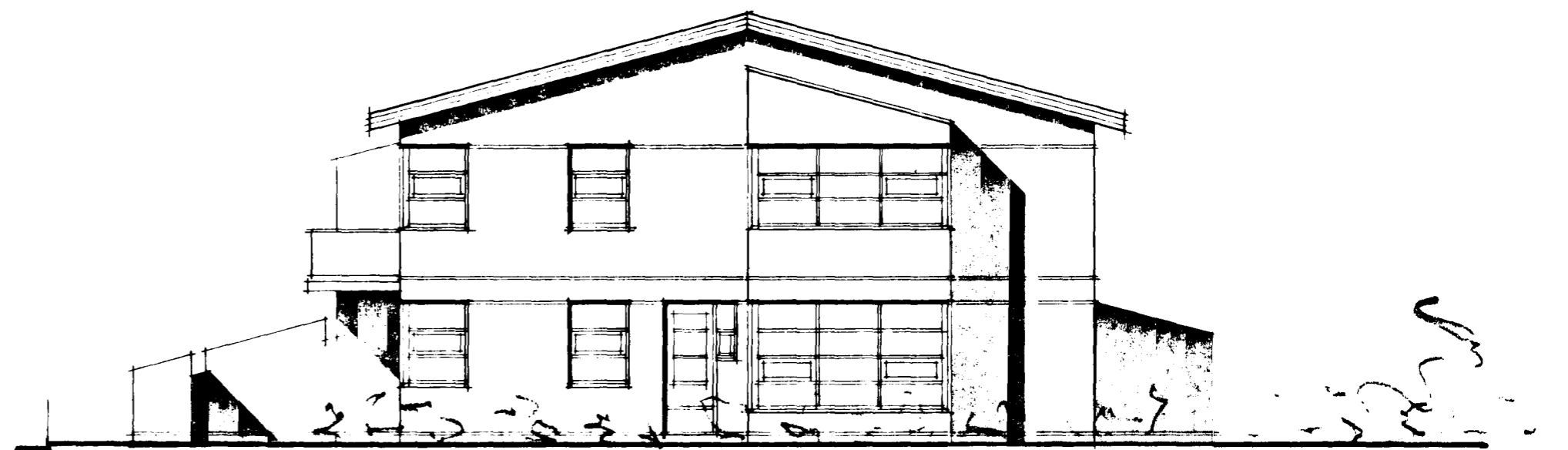
3



NR 90

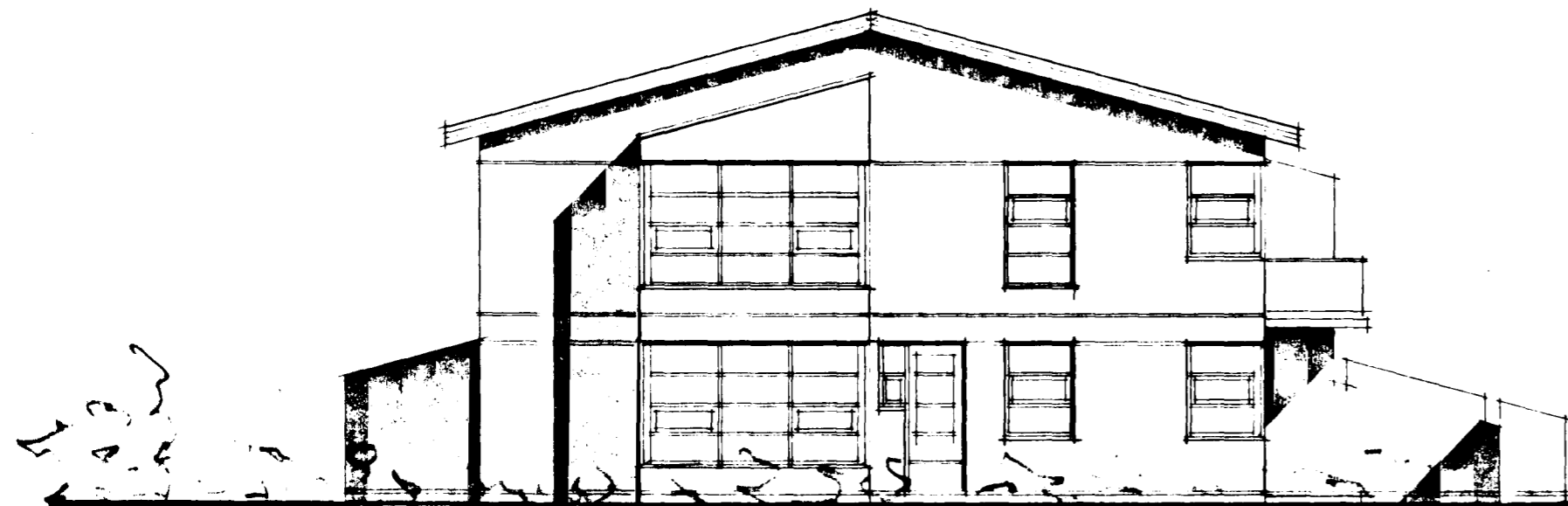
NR 88

vestur m = 1:100



NR 88

sudur m = 1:100



NR 90

nordur m = 1:100



NR 88

NR 90

austur m = 1:100

[Signature]