

Samþykkt á fundi bygginga-  
nefndar þ. 7.1.1988

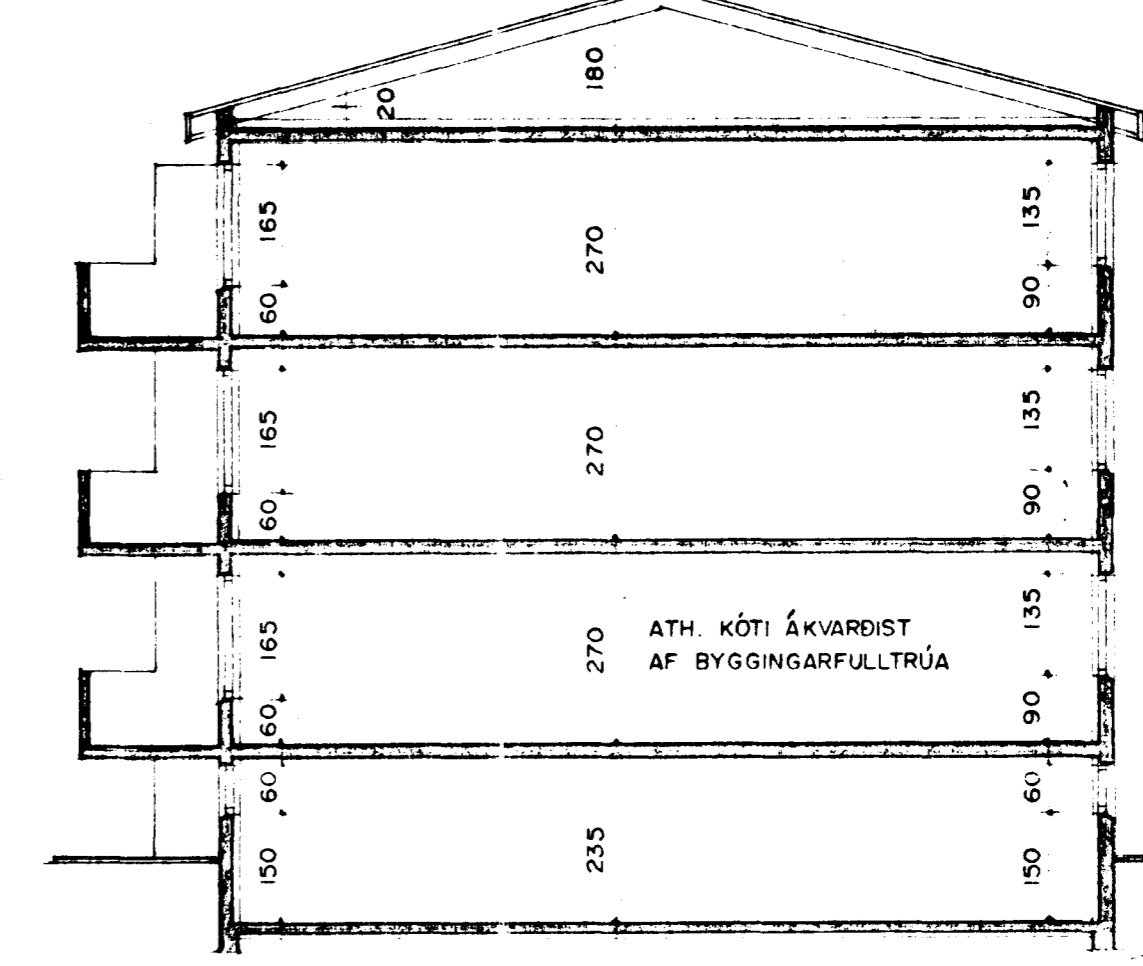
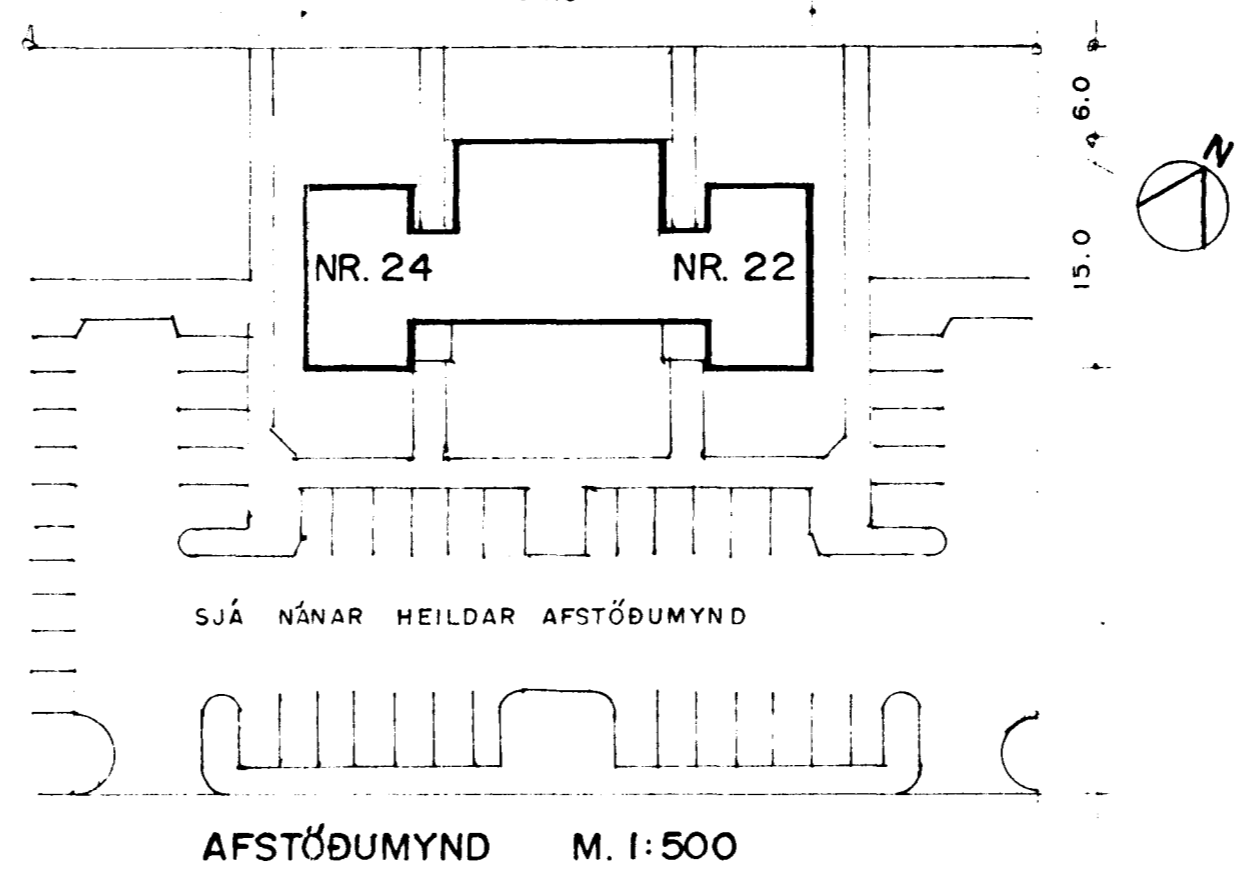
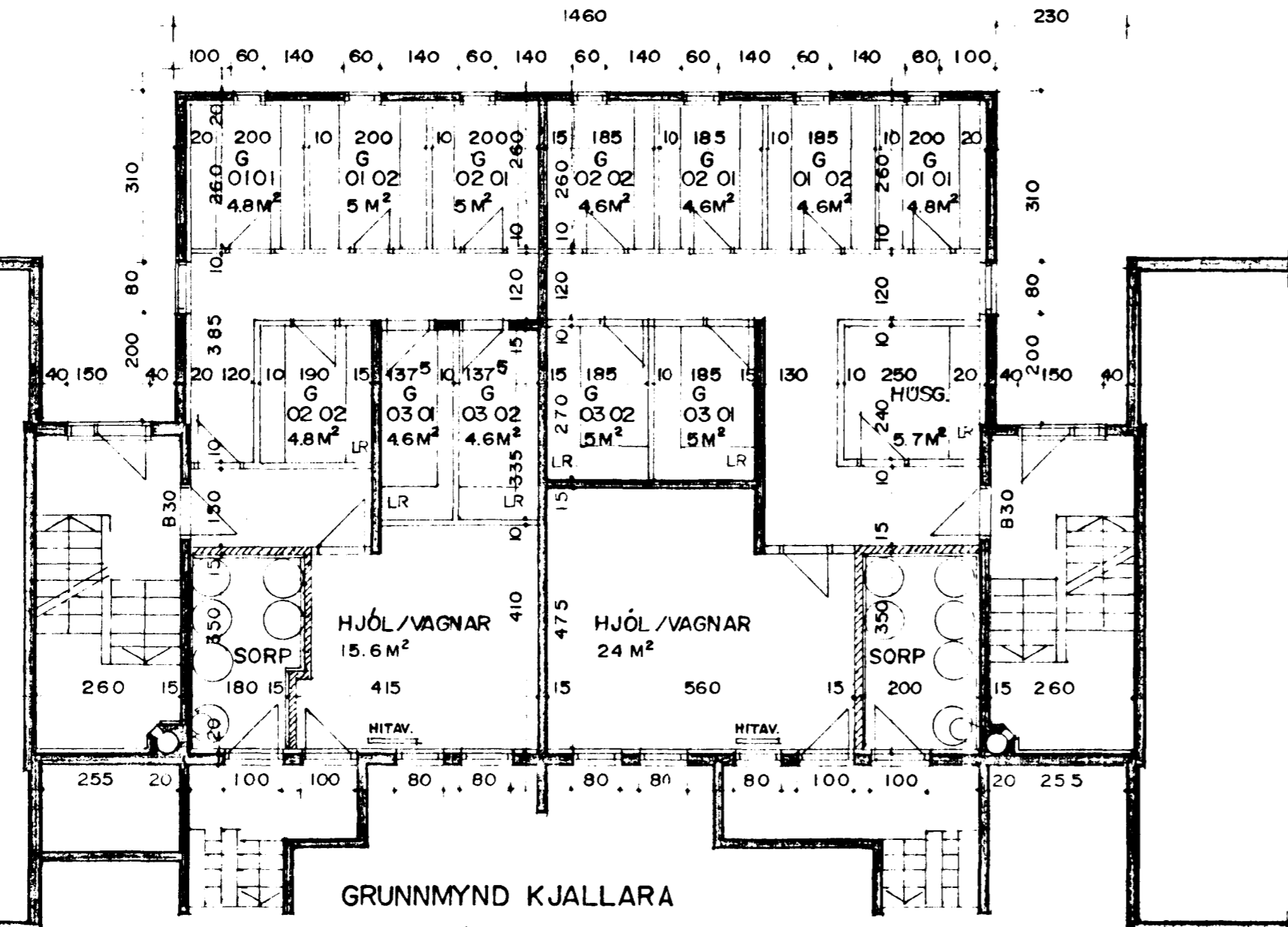
BYGGINGAFULLTRÚINN  
I HAFNARFIRÐI

*[Signature]*

1G	13,7 m <sup>2</sup>	9,9 m <sup>2</sup>
2H	200,3 m <sup>2</sup>	185,4 m <sup>2</sup>
3H	200,3 m <sup>2</sup>	180,4 m <sup>2</sup>
SAMT	414,3 m <sup>2</sup>	375,7 m <sup>2</sup>
Rúmmál	2102 m <sup>3</sup>	1875 m <sup>3</sup>

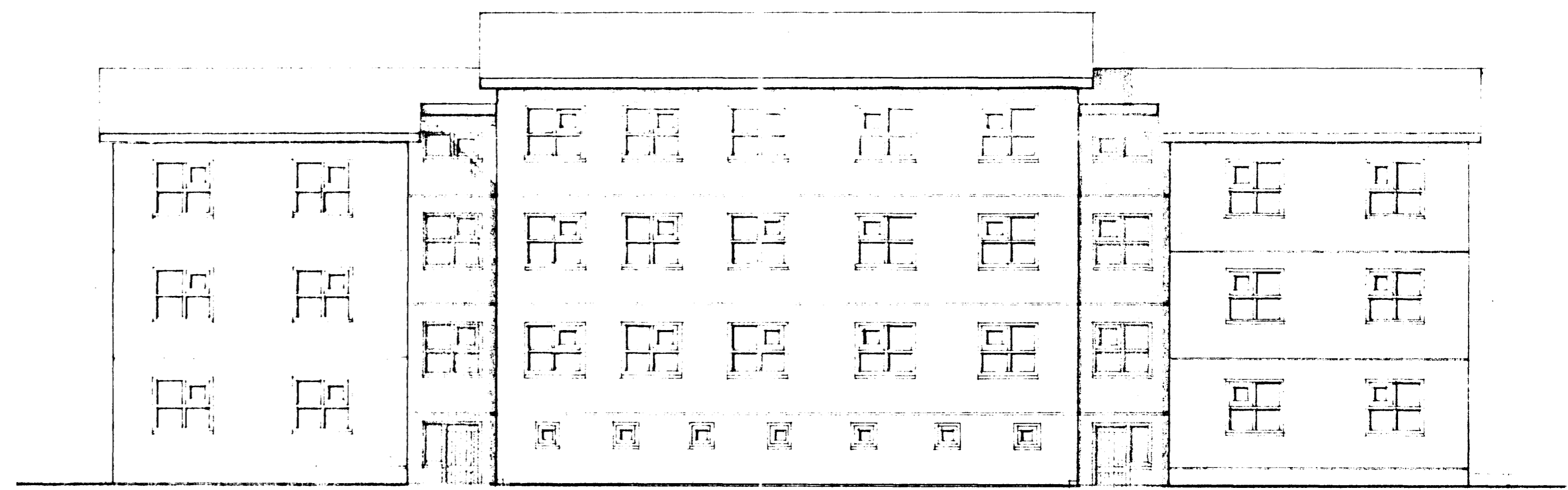
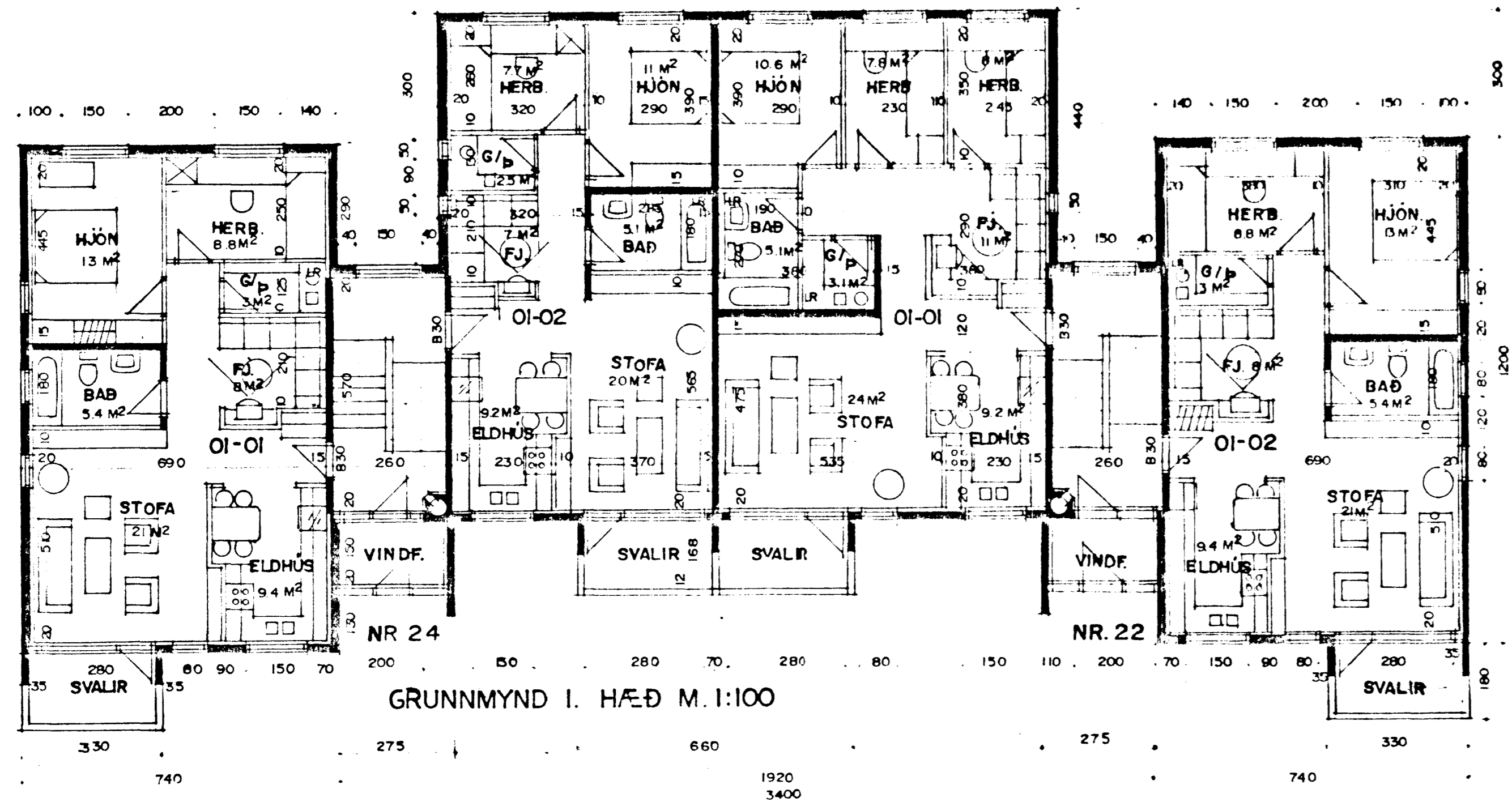
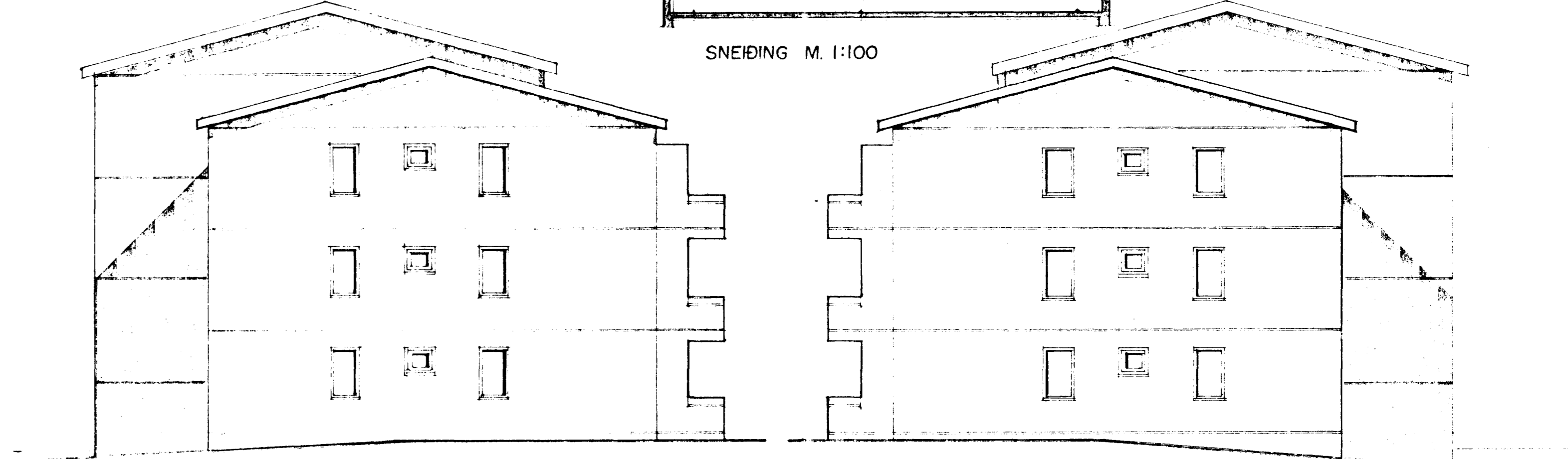
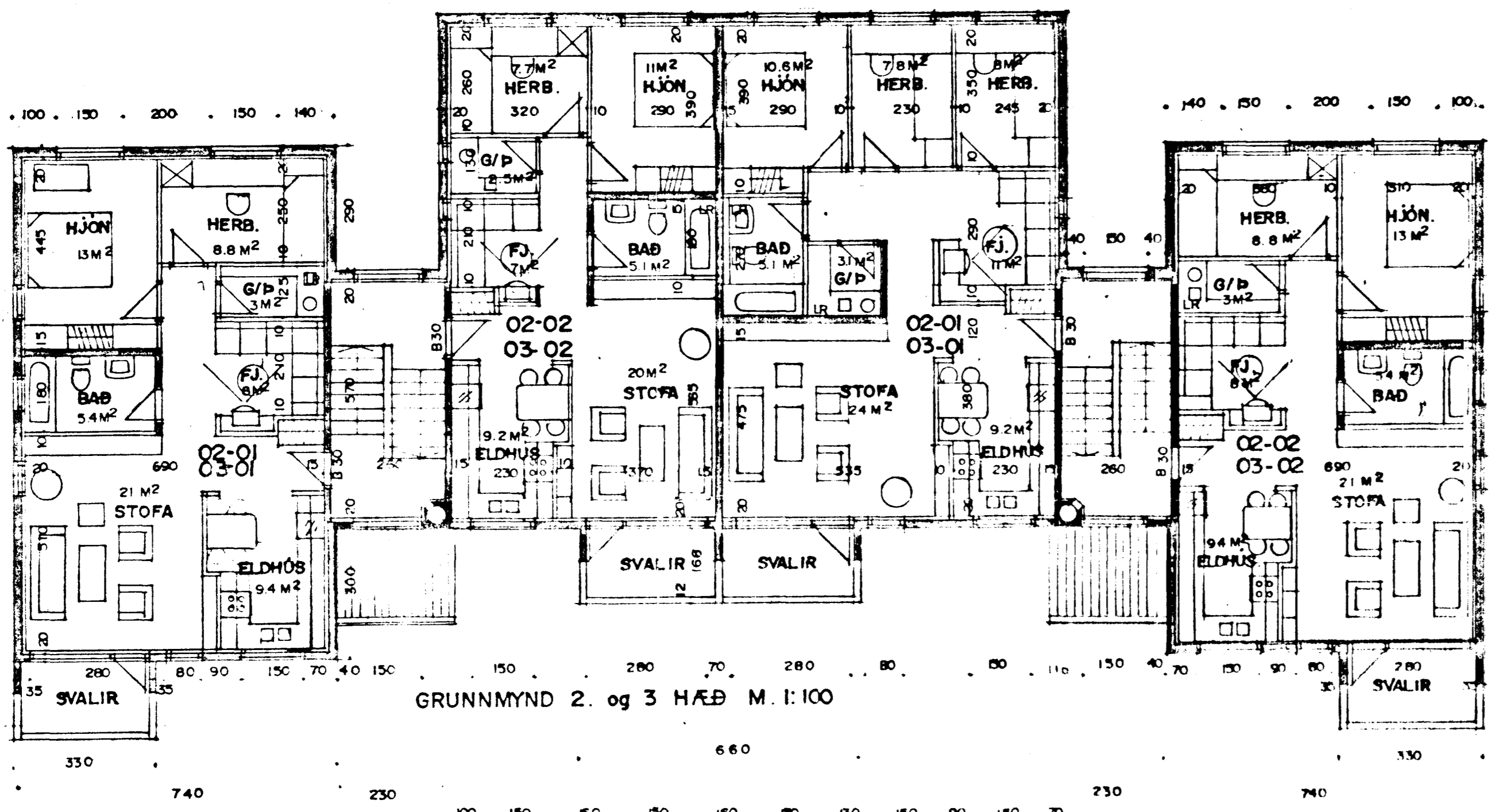
SKRIFNINGAR: BYGGINGALÝSING.

UNDIRSTIGNIR: STAÐSVEPTAR A HRAUNFYLLINGU.  
DÖMPLATA: STAÐSVEPTI A HRAUNFYLLINGU.  
ÖTVEGGIR: STAÐSVEPTIR 20 SM. 7 SM.  
EINANGRIN: 2 SM MÖRÐIÐ.  
ÞAKVIRKI: SPERRUR 50 X 125 MM C/C 800 MM  
STÓLAR A LOFTPLATTU.  
ÞAKLEIÐING: KLEIÐING 25 X 150 MM BORBUTUR.  
ÞAKPAPPI OG ÞAKJARN: EINANGRIN 200 MM STEINULL.  
ELDVARNIR: FYLGJA SKAL FYRIRMULUM  
SLÖKVIÐLÖSDSTJÓRA UM ELDVARNARÞINGAD OG  
STAÐSETNINGU HANS. BSJ. = BRINASIANGA 25 M. B-30  
OG F-30 = ELDVARNARREIÐIR OG VEGGR.  
ADALBIRNARVIRKI HÖSSINS SKIÐU HÖNNU FYRIR 60  
MÍKRONA BRANNAFI.  
I.S.R. TÁKNAR LÖGFRÆSTINGU.  
KÖNNUNARTRÚUR EINSTAKRA BYGGINGAHLUTA SEU I  
SAMREKI VÍÐ I.S.T. 66.



STÖRÐUR

FIATAPMÁL KJALLARA	207,0 M <sup>2</sup>
FIATAPMÁL 1. HÆÐAR	200,3 M <sup>2</sup>
FIATAPMÁL 2. HÆÐAR	180,4 M <sup>2</sup>
FIATAPMÁL 3. HÆÐAR	180,4 M <sup>2</sup>
HEILDARFIATAPMÁL HÖSS	568,1 M <sup>2</sup>
HEILDARVOLUMMÁL HÖSS	3.175 M <sup>3</sup>



TEIKNAD Í MARS 1988

SIGURÐUR ÞORVARÐARSON BYGGINGAFRÆÐINGUR BFI.  
STRANDGÖTU 11 HAFNARFIRÐI SÍMI 651510

TEIKNING 1/1