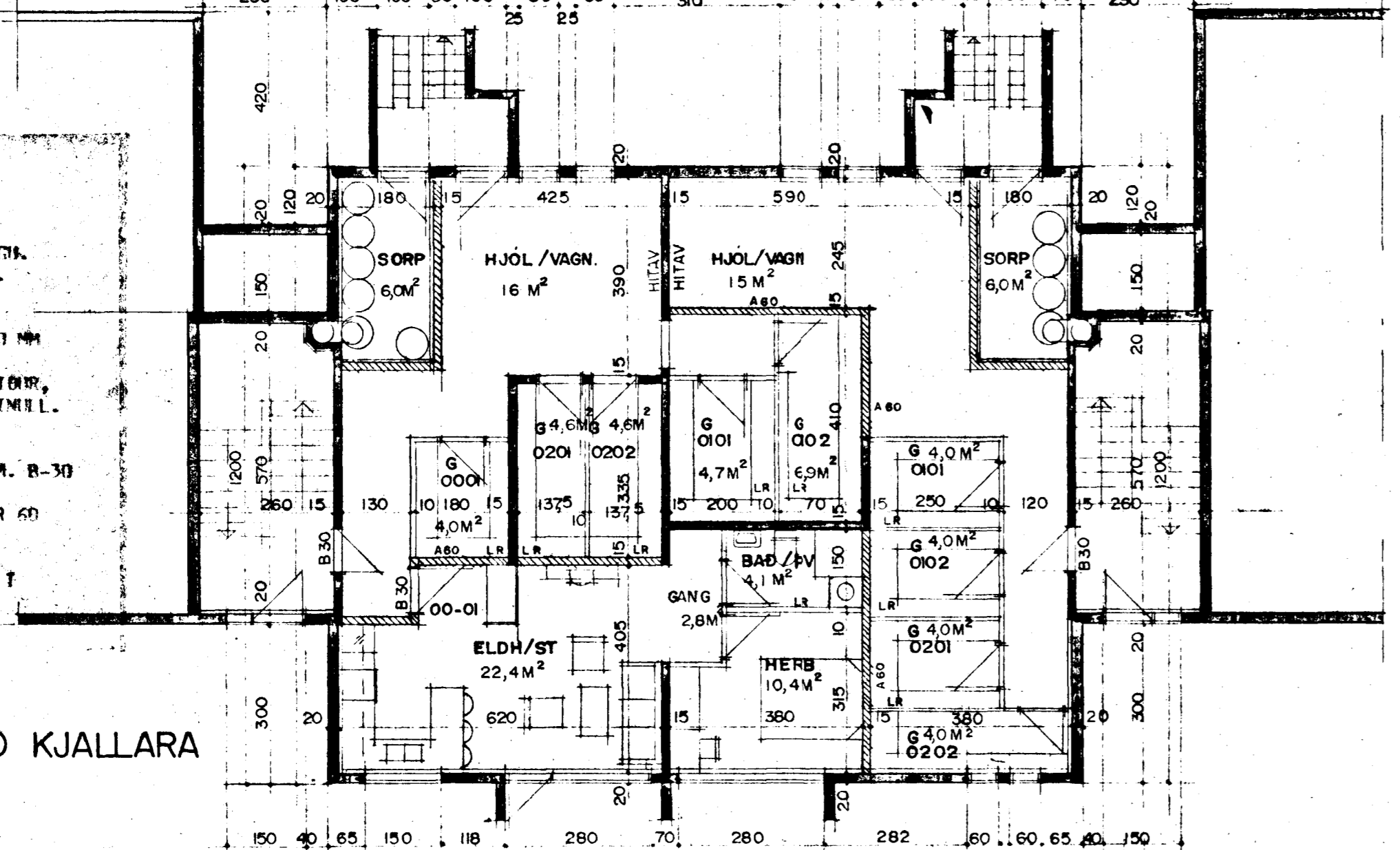


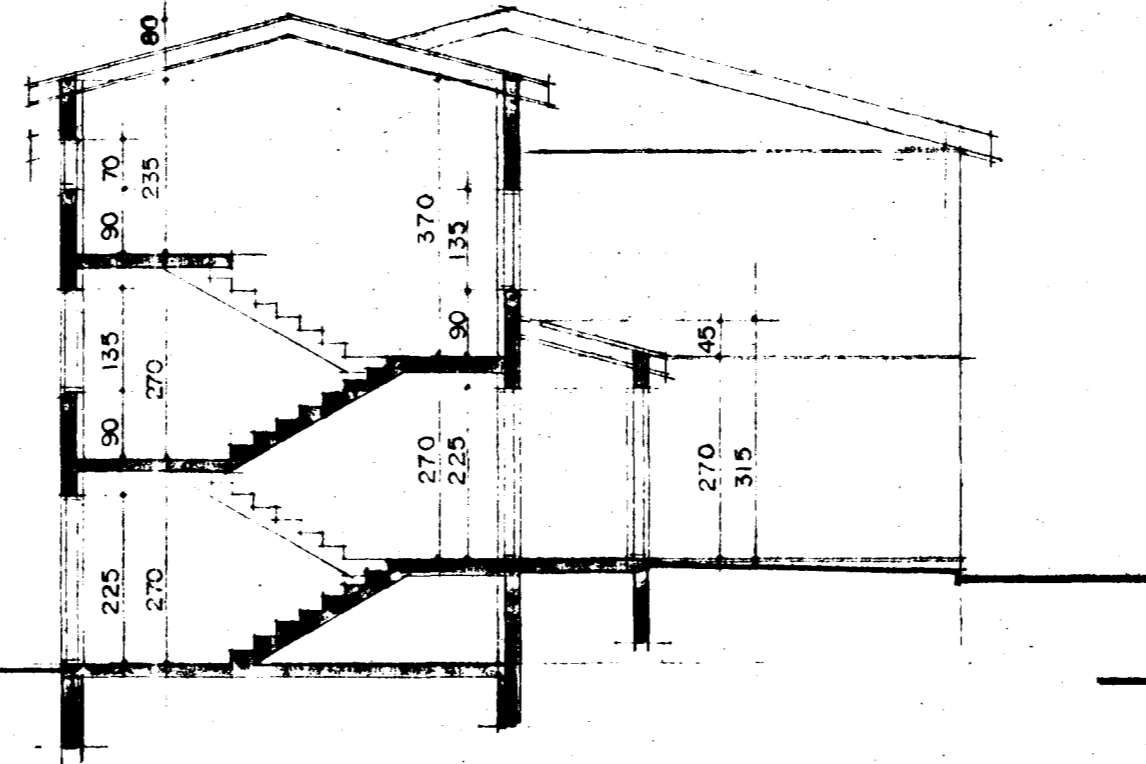
Samþykkt á fundi bygginga-  
nefndar þ. 7. 4. 1988  
BYGGINGAFULLTRÚINN  
Í HAFNARFIRÐI

SKÝRNINGAR: RYGGINGARVING.  
UNDIRSTÖÐUR: STADSTYPTAR A HRAFNVELLINGU.  
BGNPLATA: STADSTYPTI A HRAFNVELLINGU.  
BYGGING: STADSTYPTIR 20 SM. 7 SM.  
EINANGUR: 2 SM HRAFN.  
DAGVIRKI: SPÖRIR 50 X 125 MM C/C 800 MM  
SEIADAR A LÖFTUN.  
ÞAKKEDNING: KLÉING 25 X 150 MM BOPVÖR.  
ÞAKKARI OG ÞAKTAN. EINANGUR 200 MM STEINULL.  
EINANGUR: FYRJA SKAL FYRIRHULU.  
STADSTYPTINGA OG ELDVARNARHÖRÐ OG  
STADSTYPTINGA HANS. HÖL = BRUNASLANGA 25 M. B-30  
OG F-30 = ELDVARNARHÖRÐ OG VÖRÐ.  
HAFNARFIRÐI HÖSINS SKOÐU HÖRÐI FYRIR 60  
MÍNÚTUM BRUNNA.  
L.R. TÆKNAR I DEFRISTINGU.  
KOMMUNAFÉLAG EINHAKKA RYGGINGARLUTA SEU I  
SAMRIMI VÍÐ I.S.1. 46.

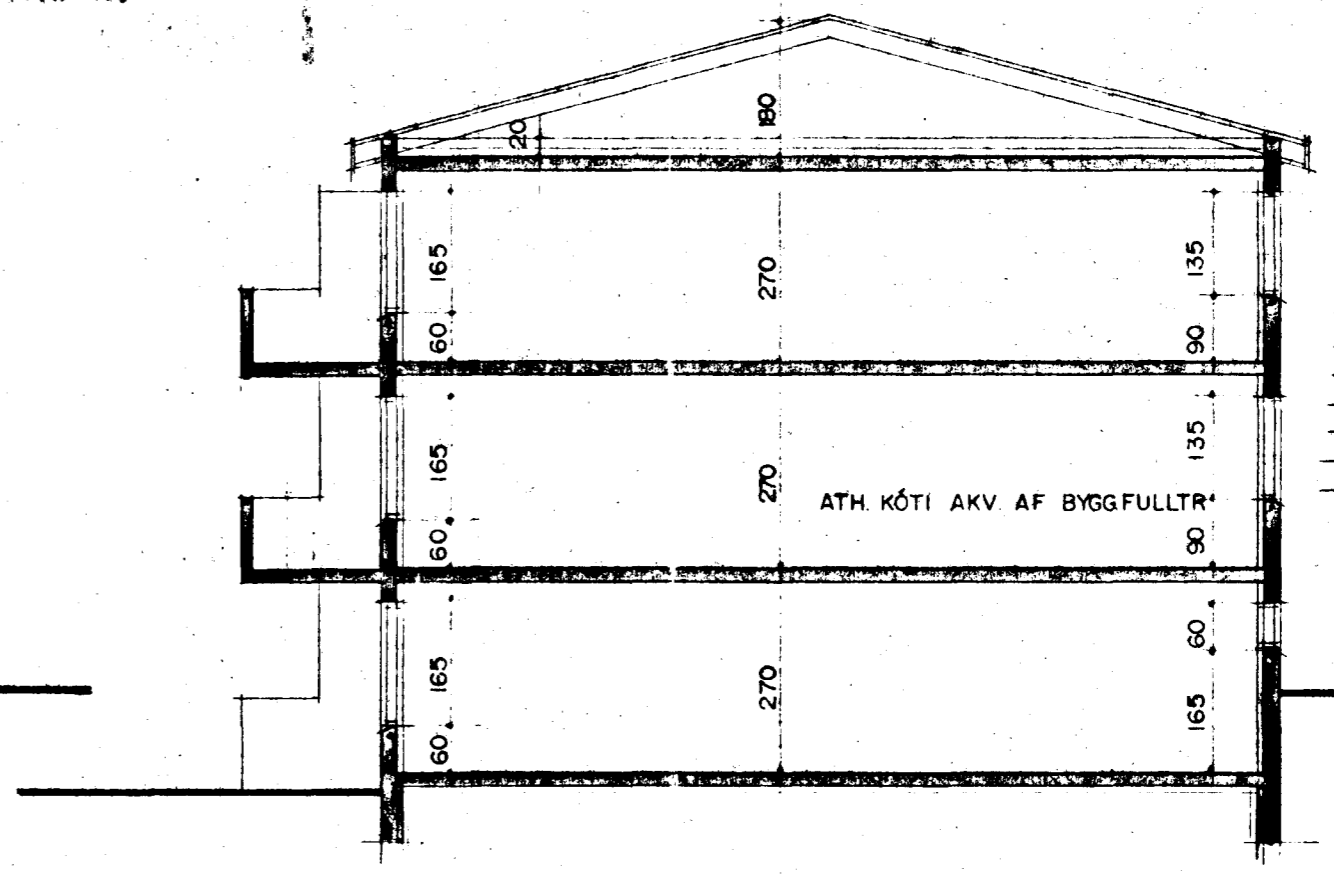
STÖRÐIR:  
FLATARM. KJALLARA ..... 707,0 M<sup>2</sup>.  
FLATARM. 1. HÆÐAR ..... 399,6 M<sup>2</sup>.  
FLATARM. 2. HÆÐAR ..... 307,8 M<sup>2</sup>.  
HELDARFLATARM. HAFS ..... 977,4 M<sup>2</sup>.  
HELDARFLATARM. STÖR ..... 3.019,0 M<sup>2</sup>.



GRUNNMYND KJALLARA

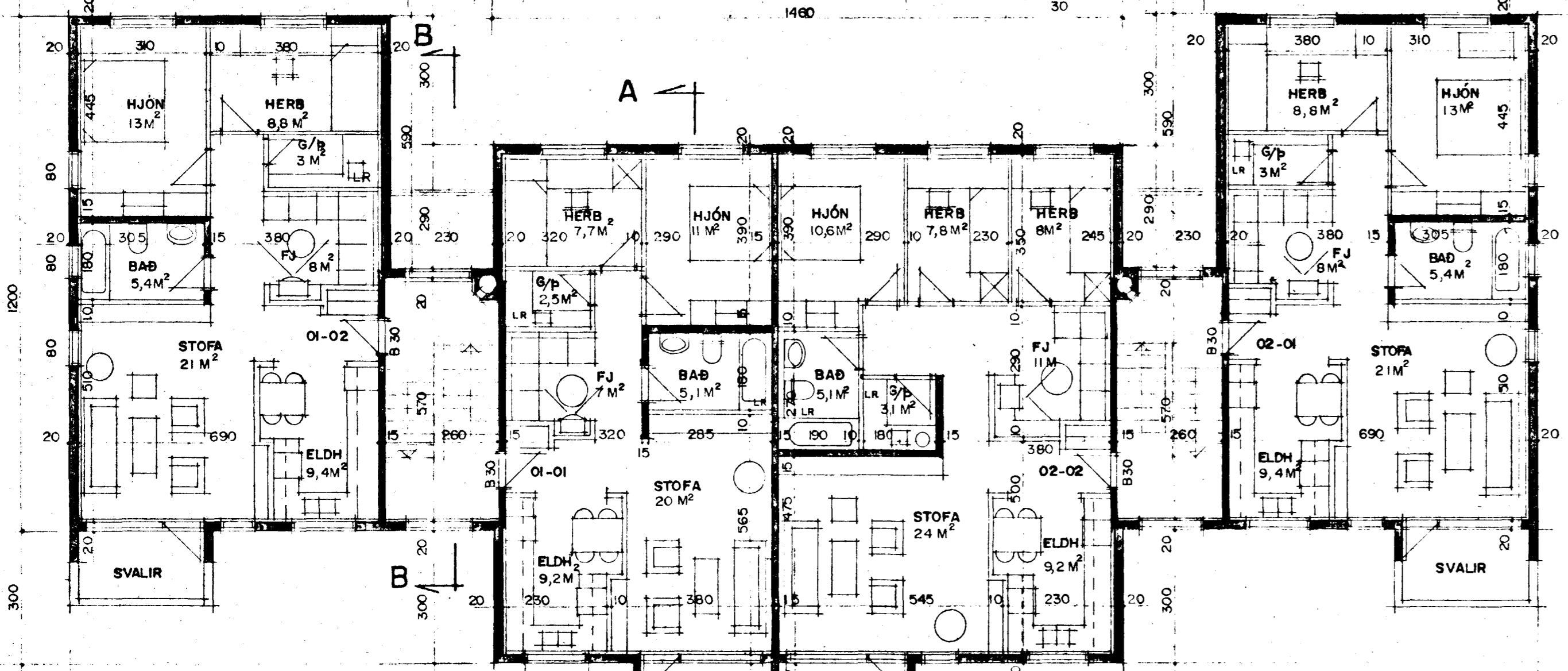


SNID B-B

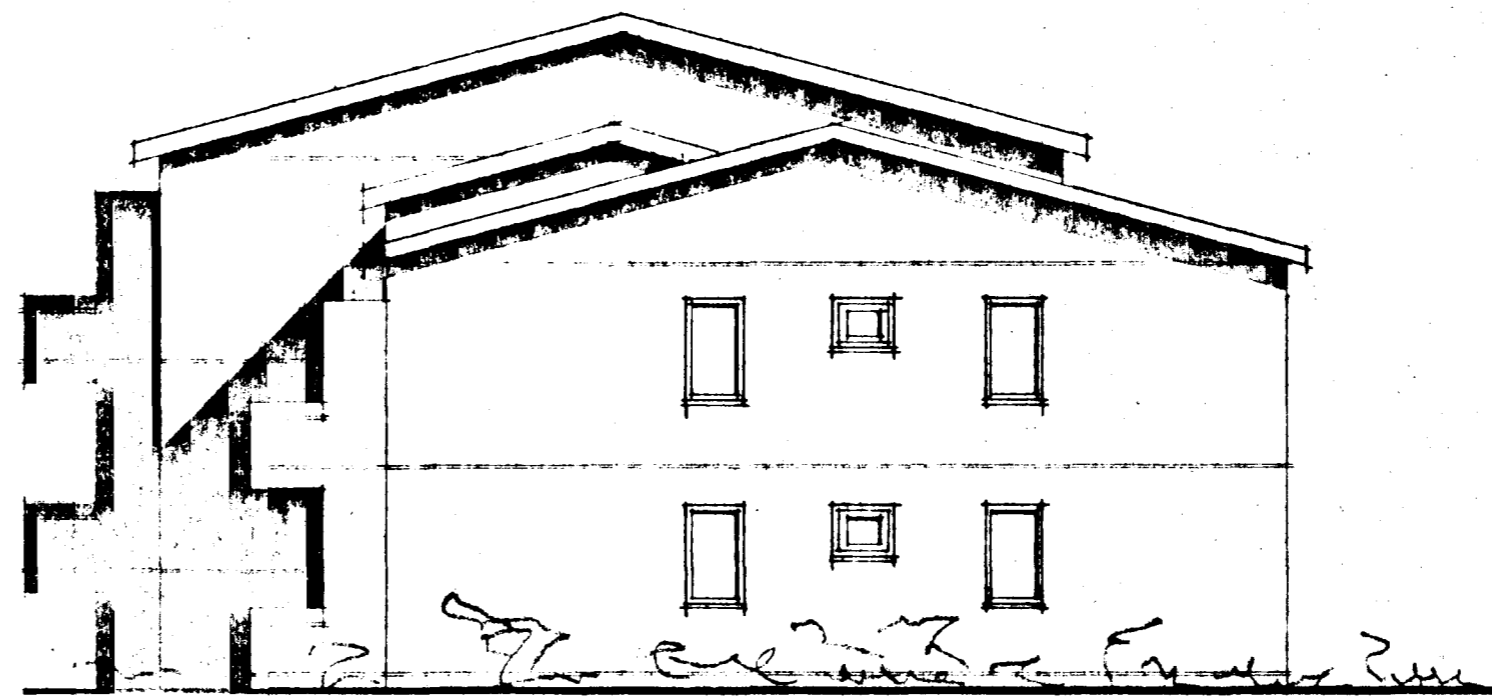


SNID A-A

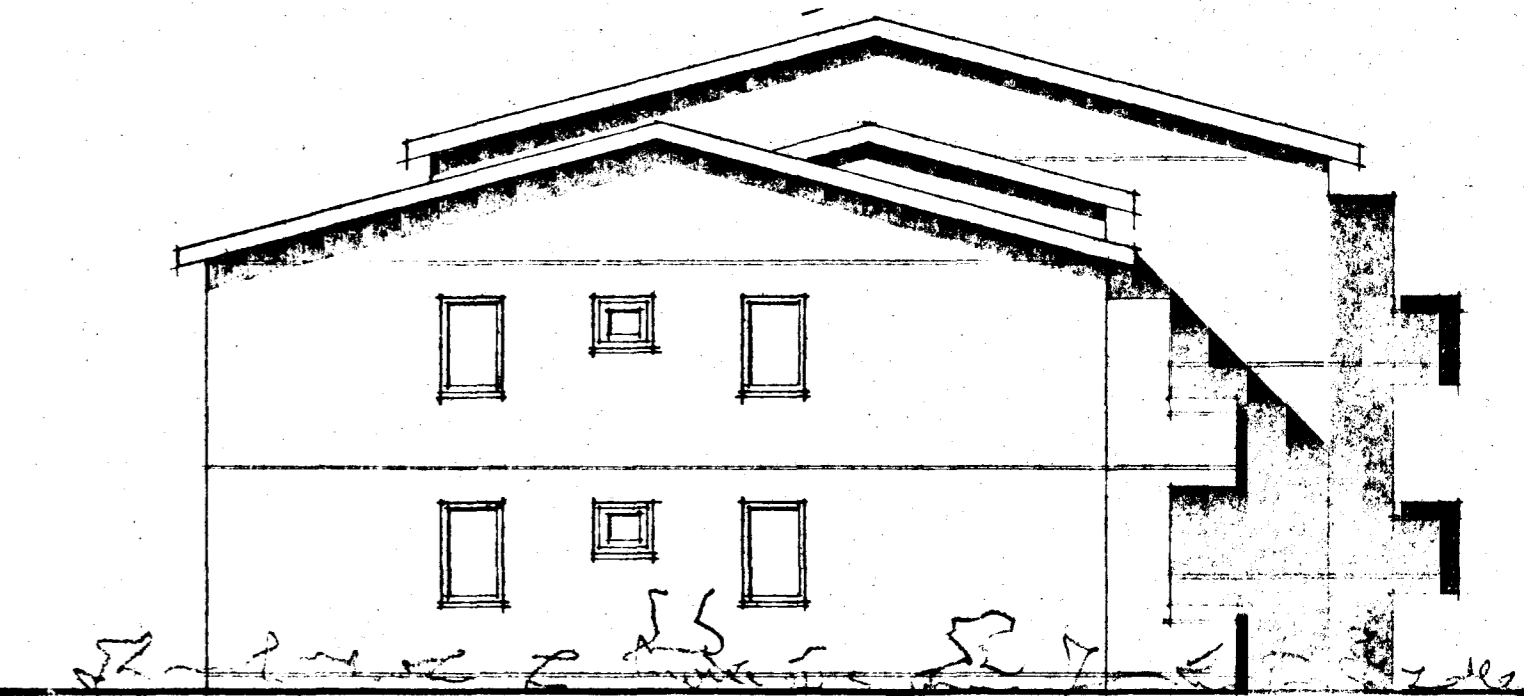
	26	28
FJ.	113,7 m <sup>2</sup>	93,9 m <sup>2</sup>
L.H.	205,0 m <sup>2</sup>	183,1 m <sup>2</sup>
2.H.	200,3 m <sup>2</sup>	189,4 m <sup>2</sup>
SAKT.	519,0 m <sup>2</sup>	459,4 m <sup>2</sup>
RUNNAR	1602 m <sup>3</sup>	1421 m <sup>3</sup>



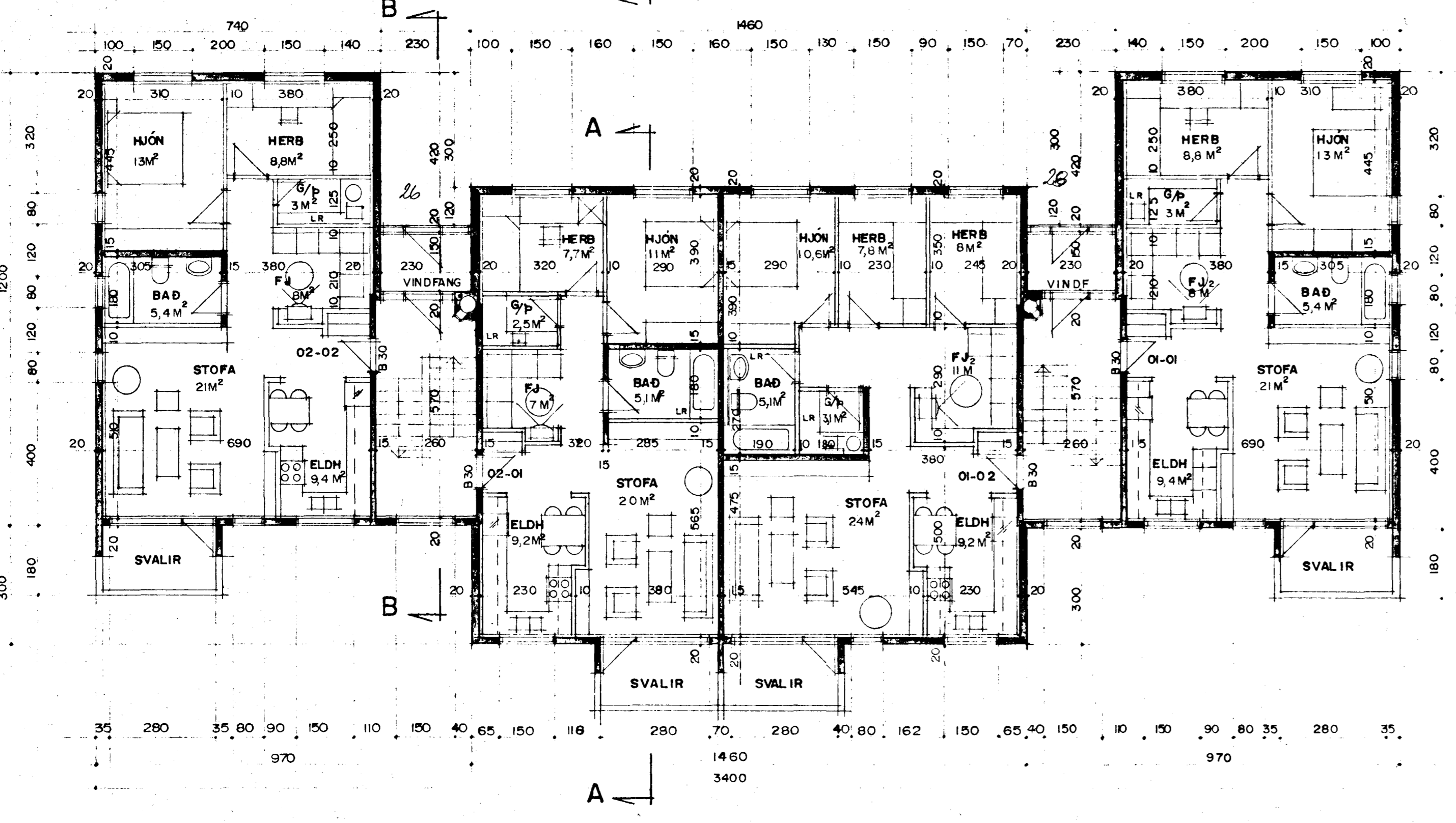
GRUNNMYND 2.HÆÐAR



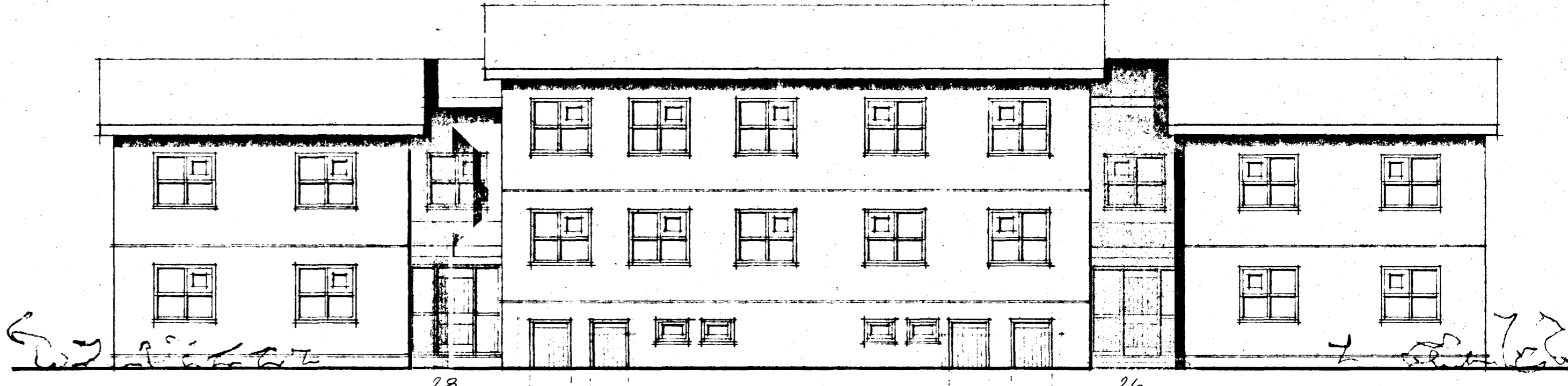
SUD-AUSTUR



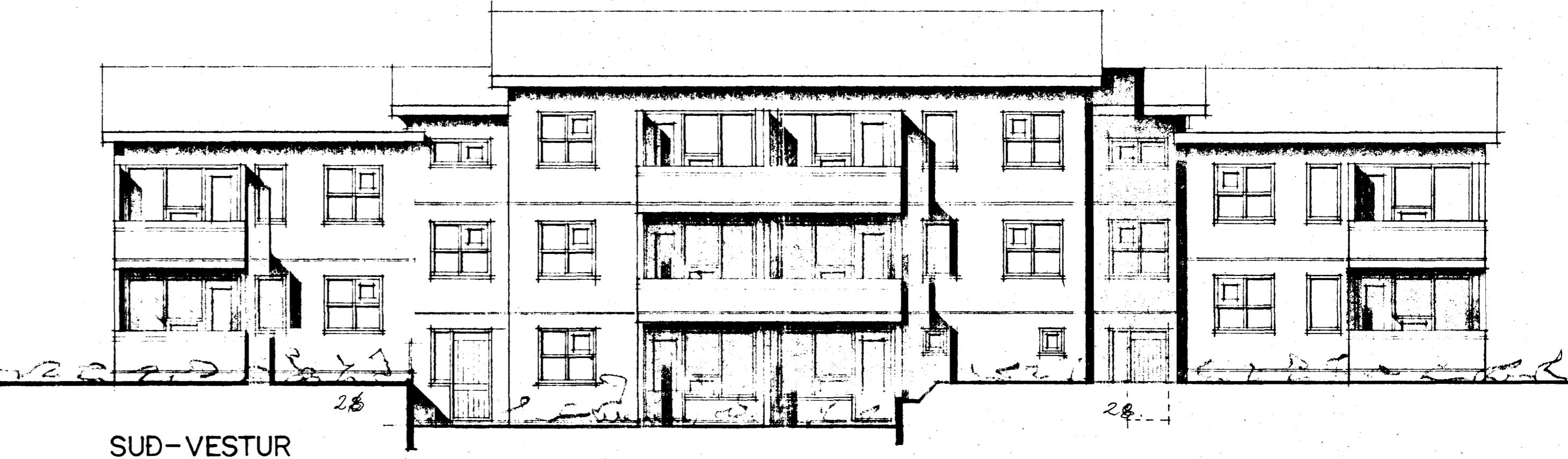
NORD-VESTUR



GRUNNMYND 1.HÆÐAR



NORD-AUSTUR



SUD-VESTUR

Í MARS 1988  
SIGURÐUR ÞORVARDARSON BYGGINGAFRÆÐINGUR BFI.  
STRANDGÖTU II HAFNARFIRÐI SÍMI 651510  
*Sigurður Þorvarðarson*