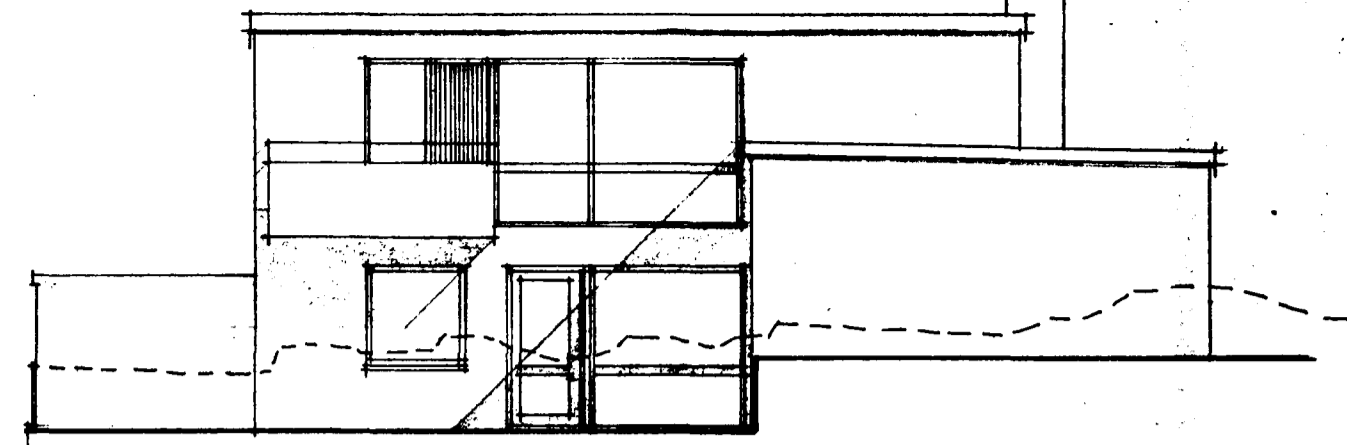
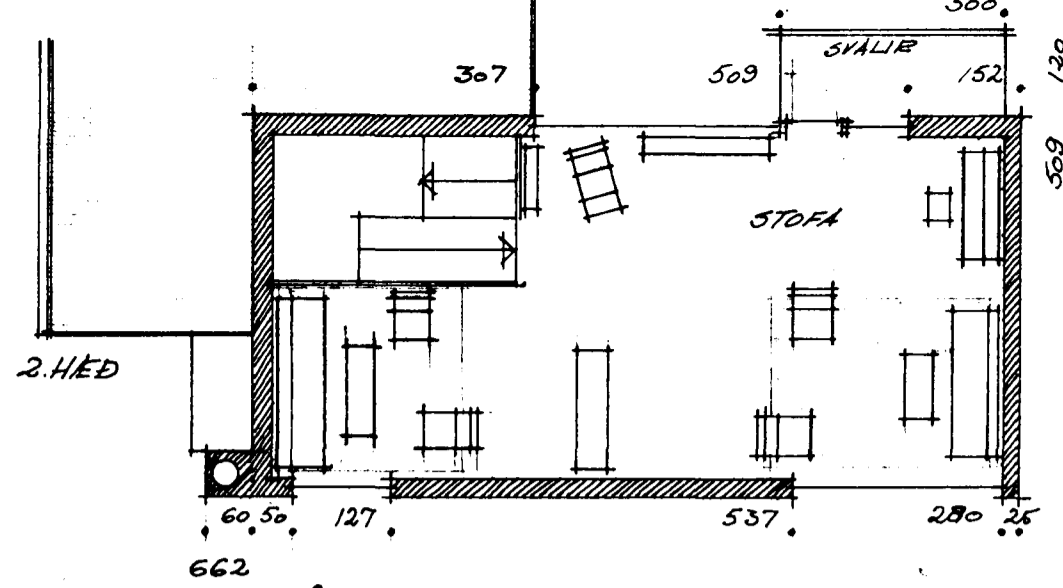


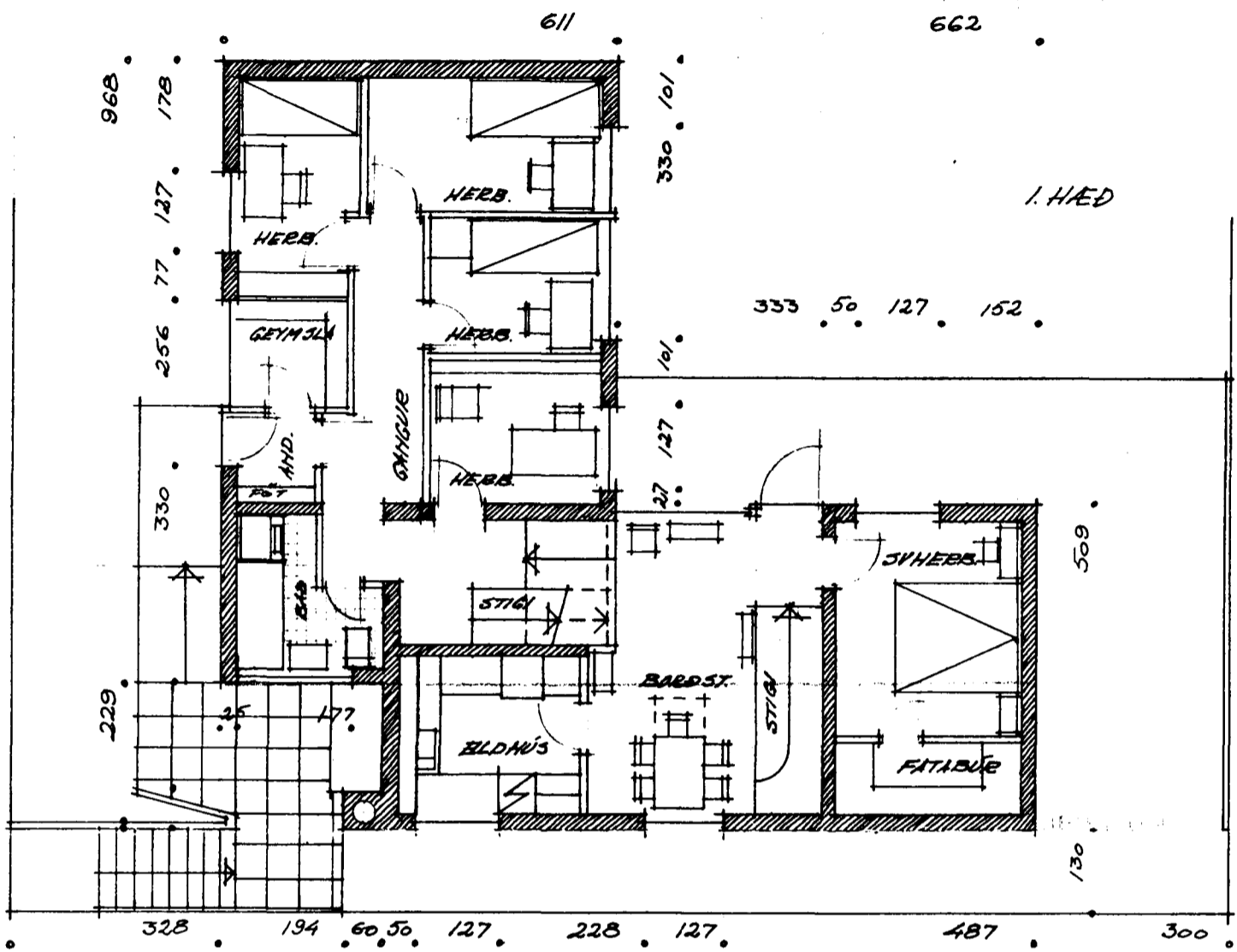
SUDURGATA 61

hafnarfirdi

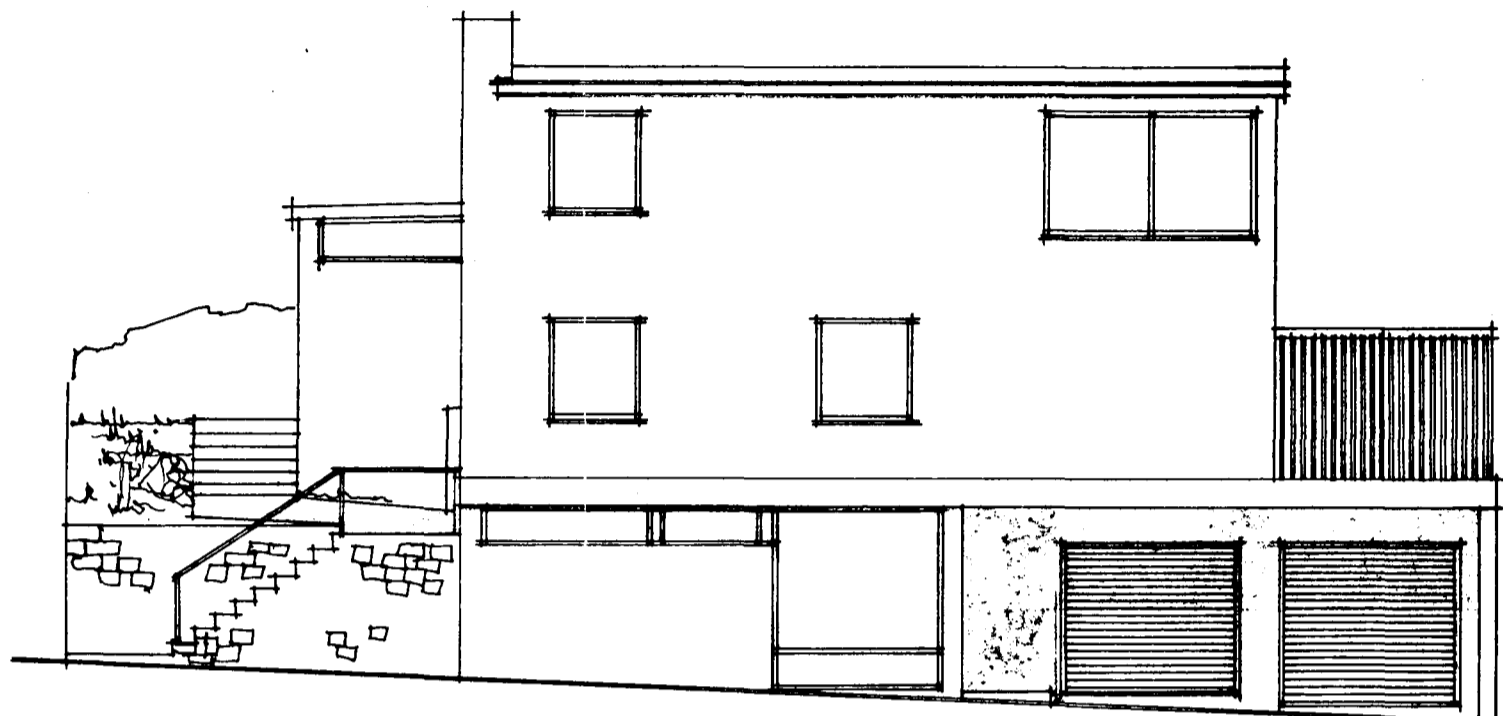
Samþykkt á fundi bygginga-
nefndar þ. 7. 8. 1959
BYGGINGAFULLTRÚINN
Í HAFNARFIRDI
Jón Bergsson



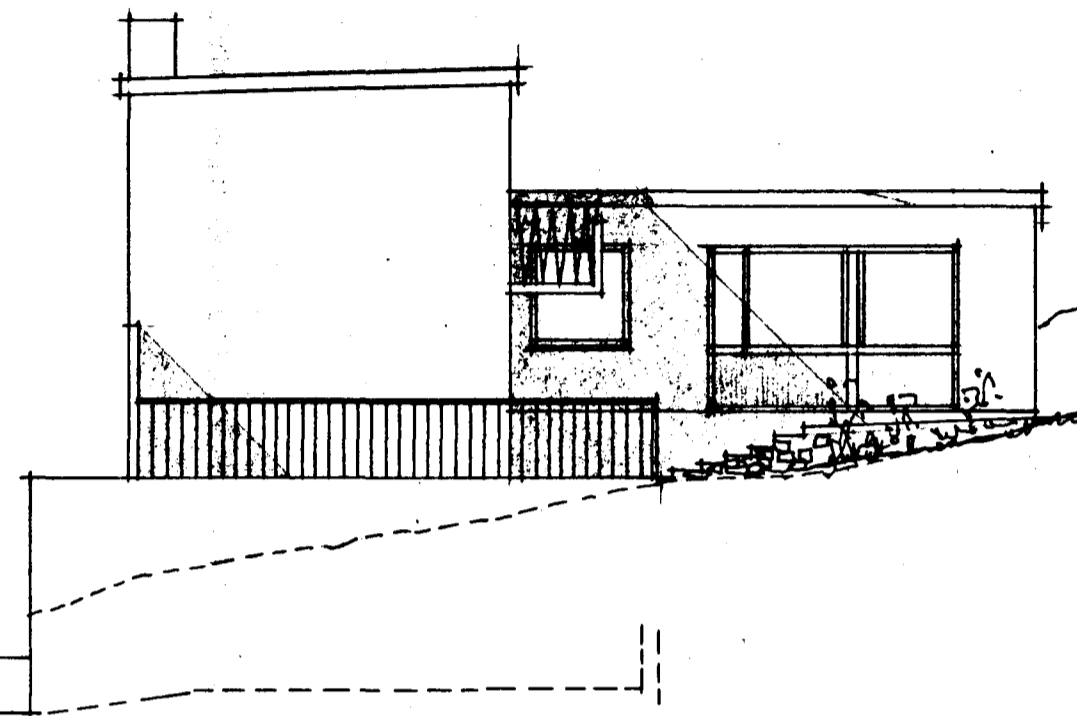
SUDAUSTUEHLID



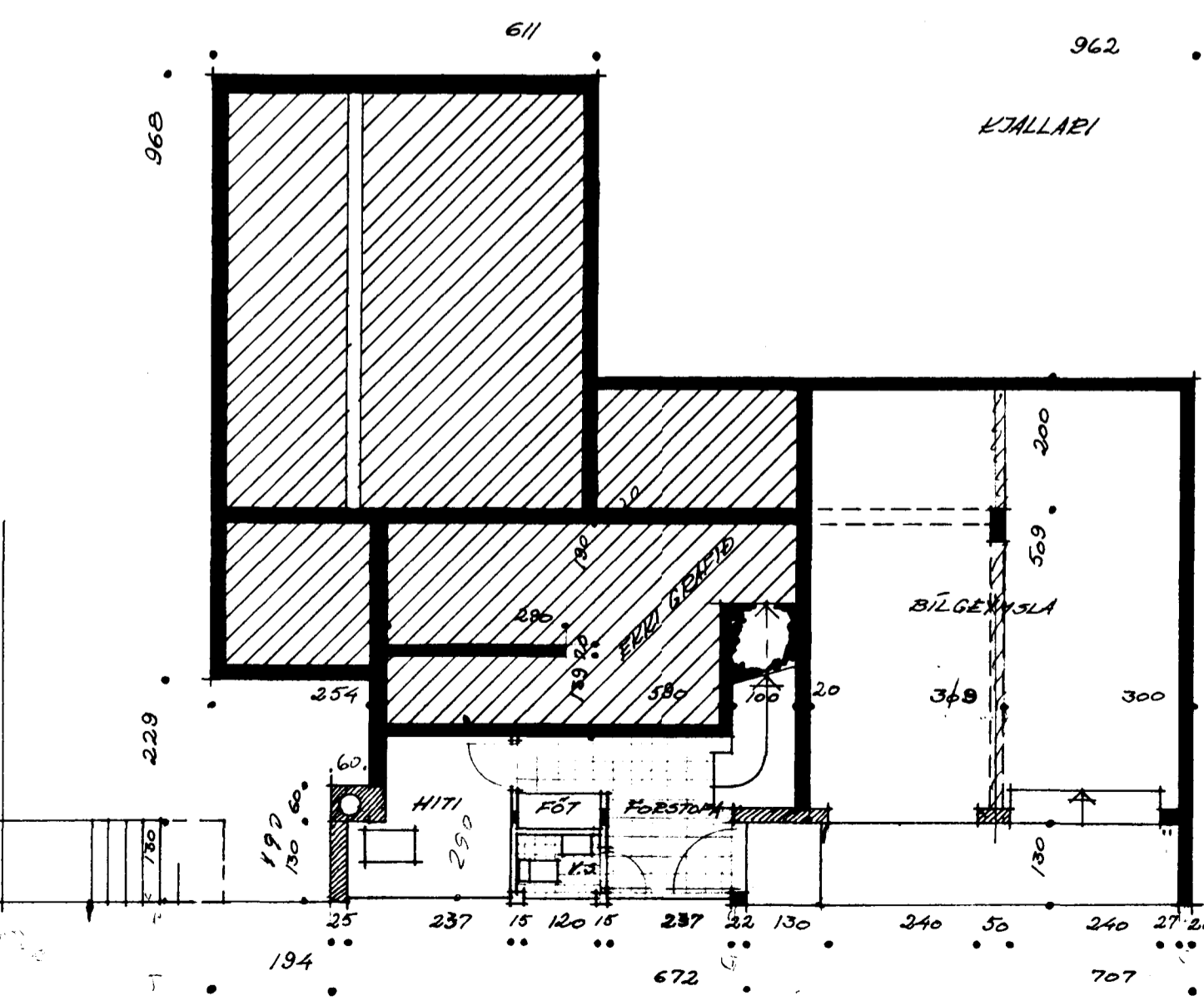
1.HÆÐ



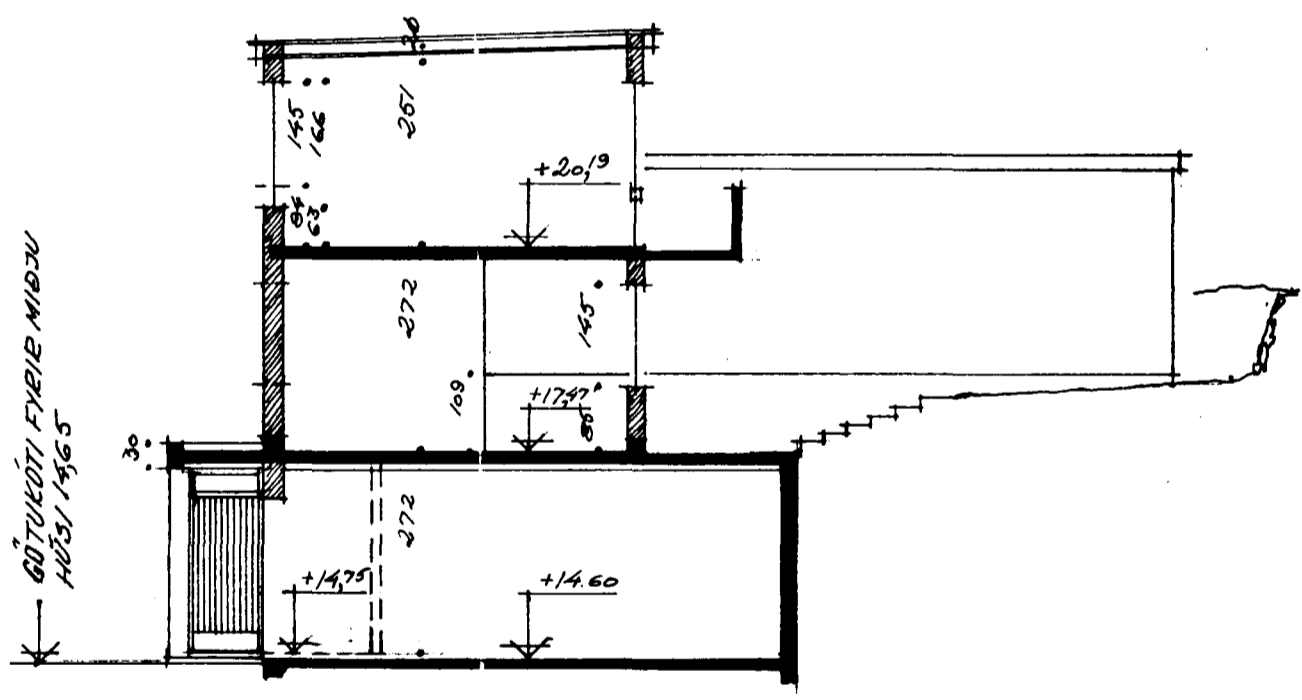
NORDVESTUEHLID



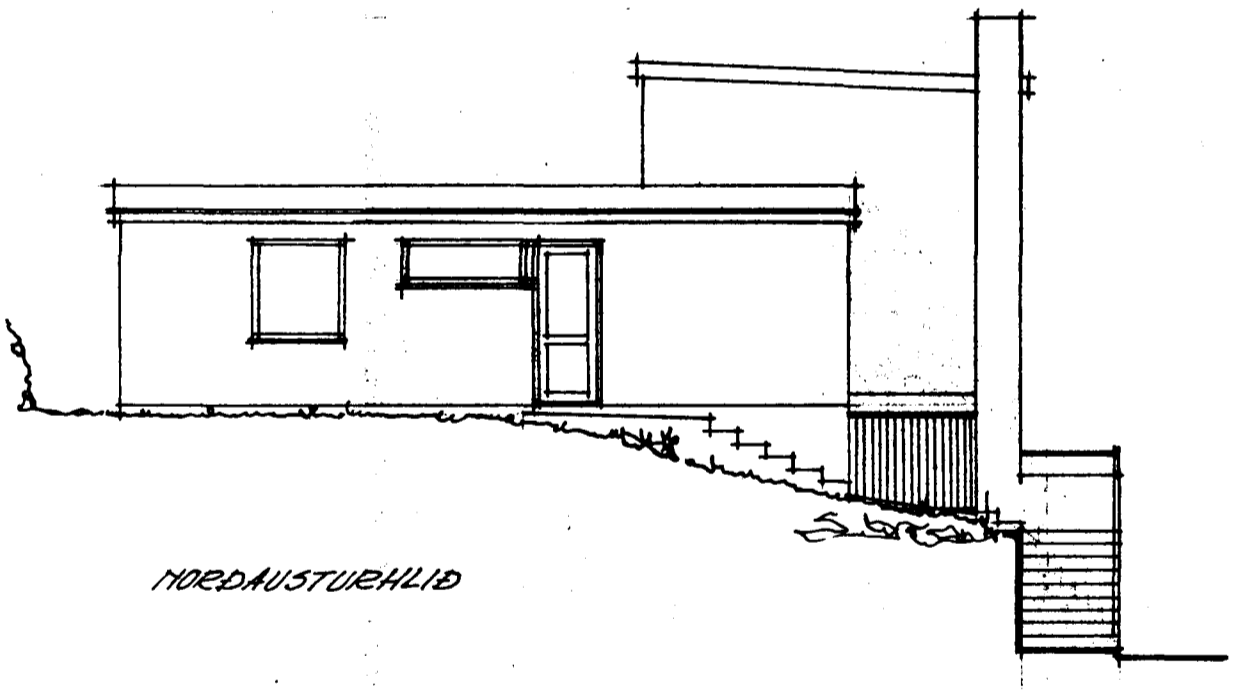
SUDVESTUEHLID



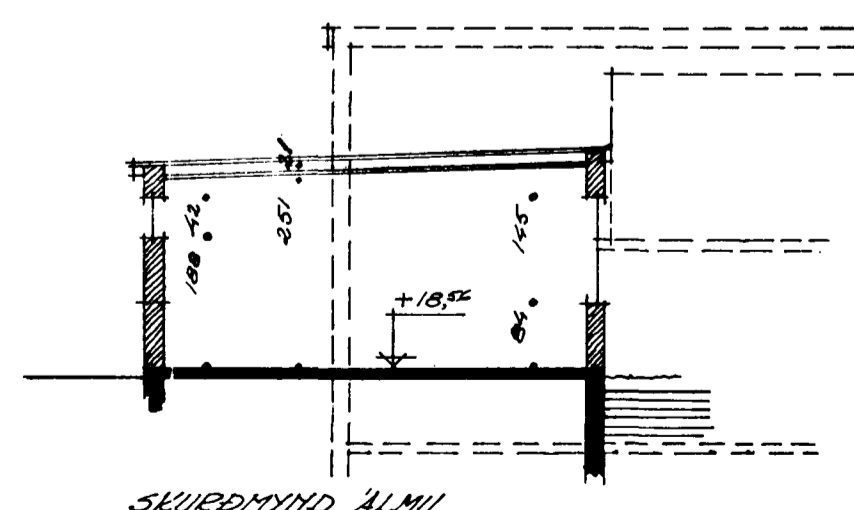
KJALLAEL



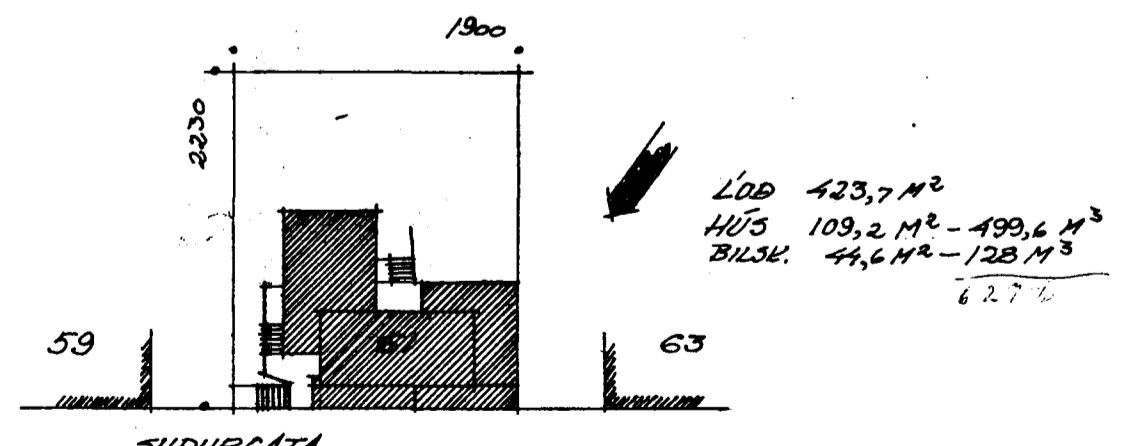
SKURDMYND



NORDAUSTUEHLID



SKURDMYND ALMU



SUDURGATA

LDG 423,7 M²
HÚS 109,2 M² - 499,6 M³
BILG. 44,6 M² - 128 M³
62,7%

AFSTÖÐUMYND M. 1:500

MÆLIKV. 1:100 0 1 2 3 4 5 6 7 8 9 10 M

1959
1. 2.
7. 8.
1959

EVIL JÚLÍ 1959
Helgi Órnáttólf