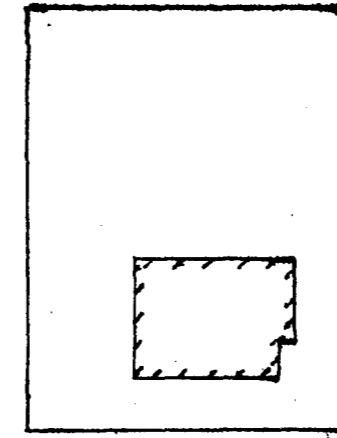


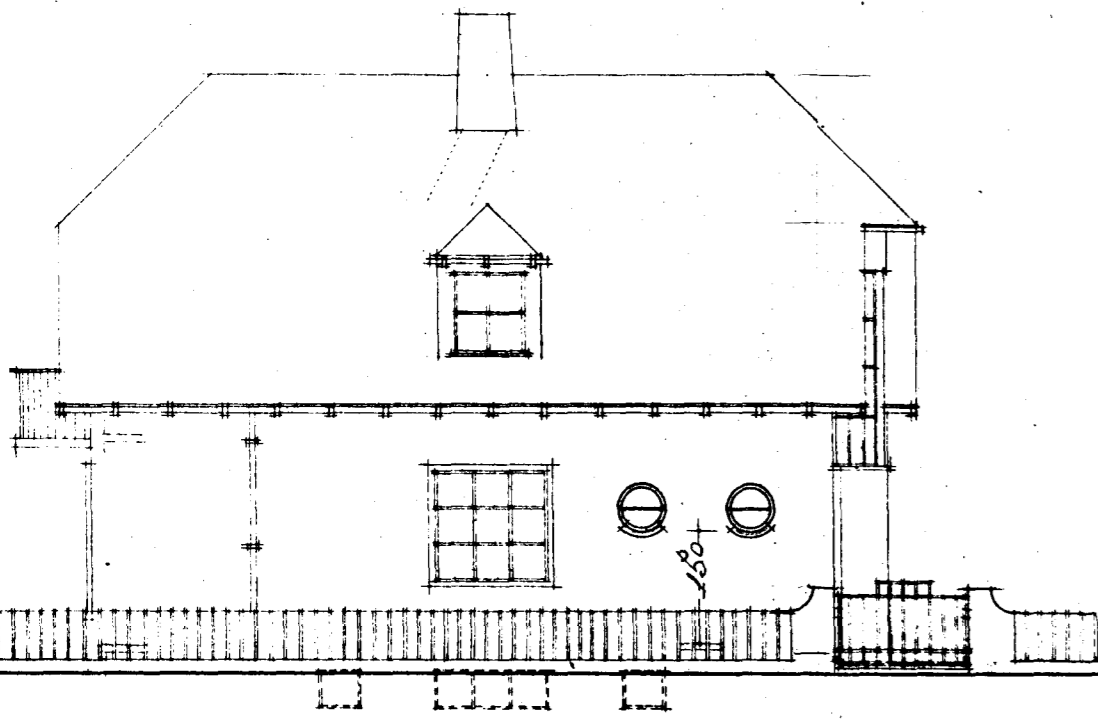
Hus nr. 66 vid Sudurgöta

i Hafnarlíði. m. 1/100.

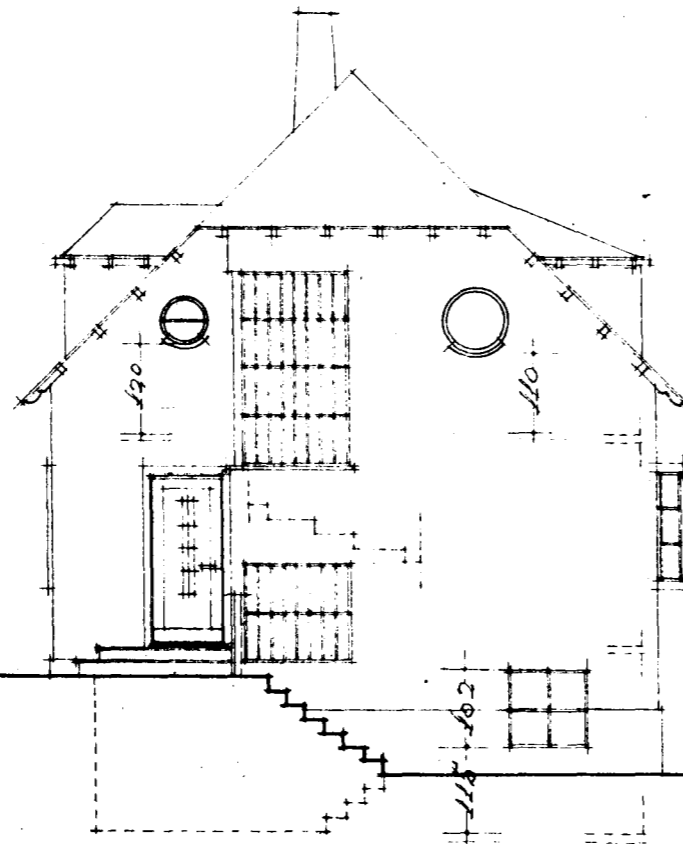
Afs 1882 mynd
Sk. 1:500



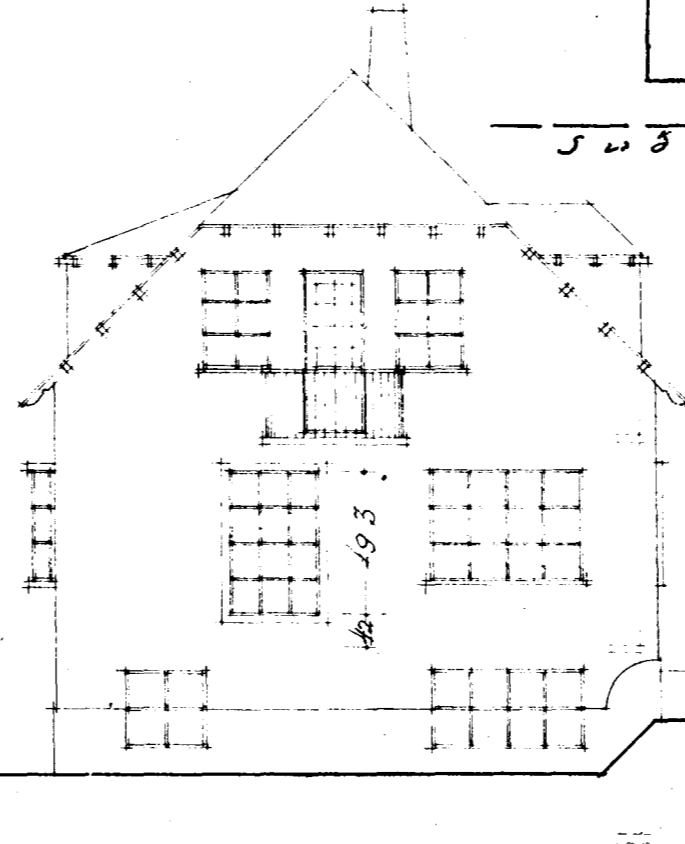
Sudurgöta



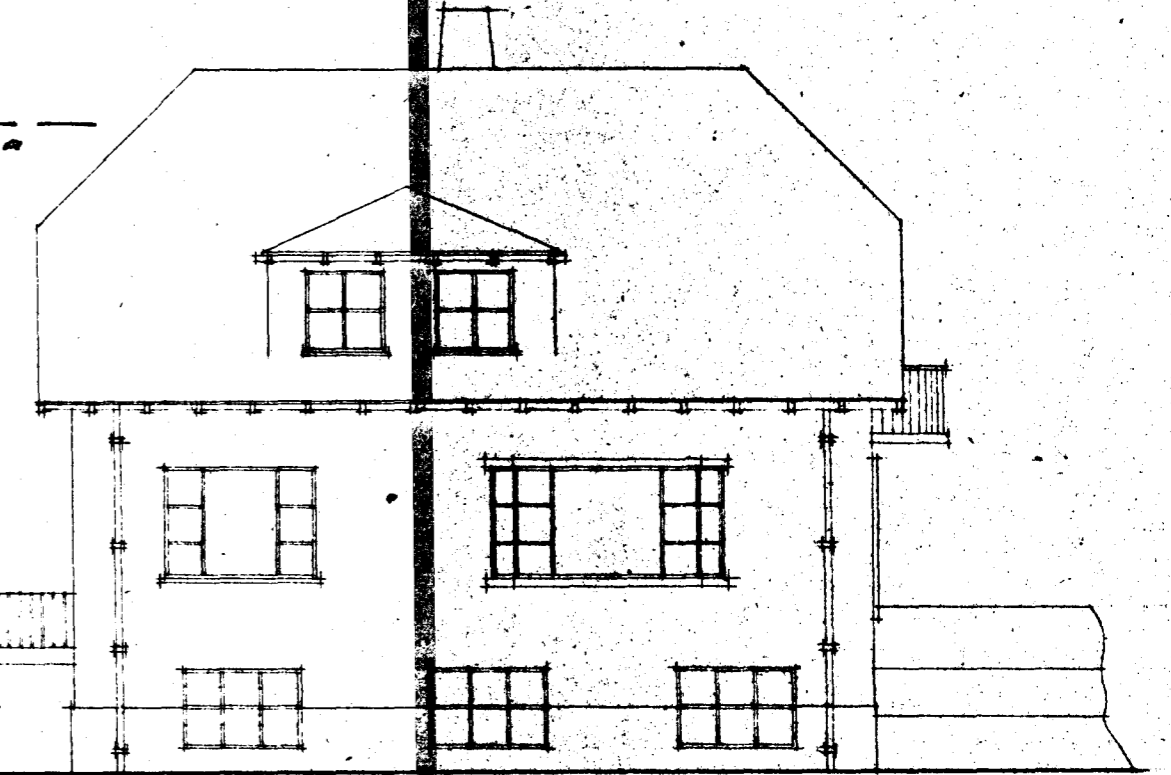
Östurlíð.



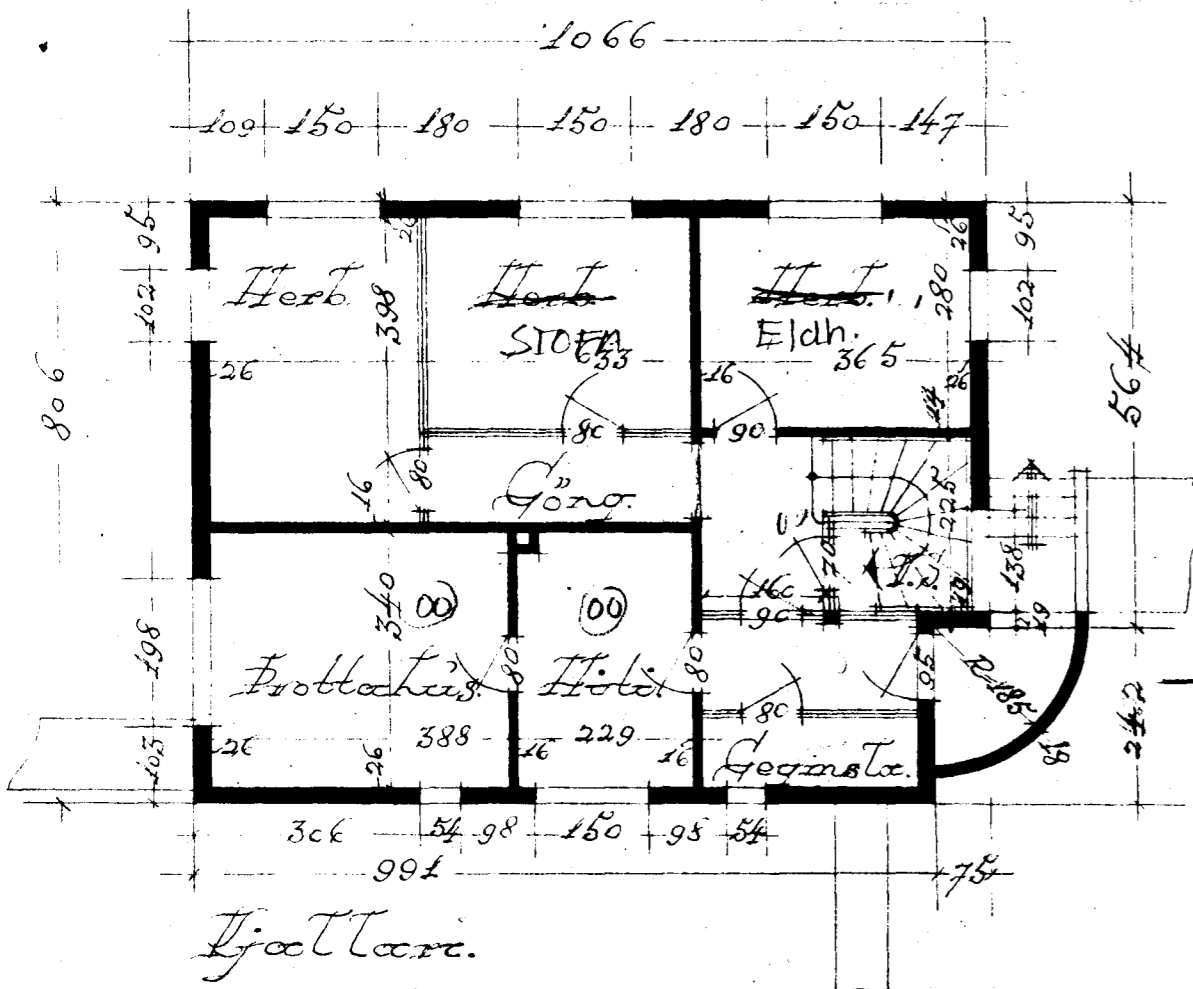
Norðurlíð.



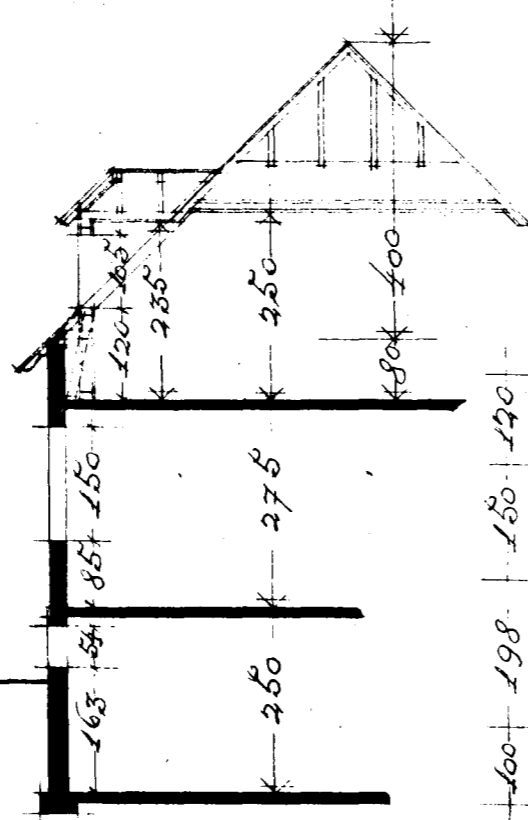
Suðurlíð.



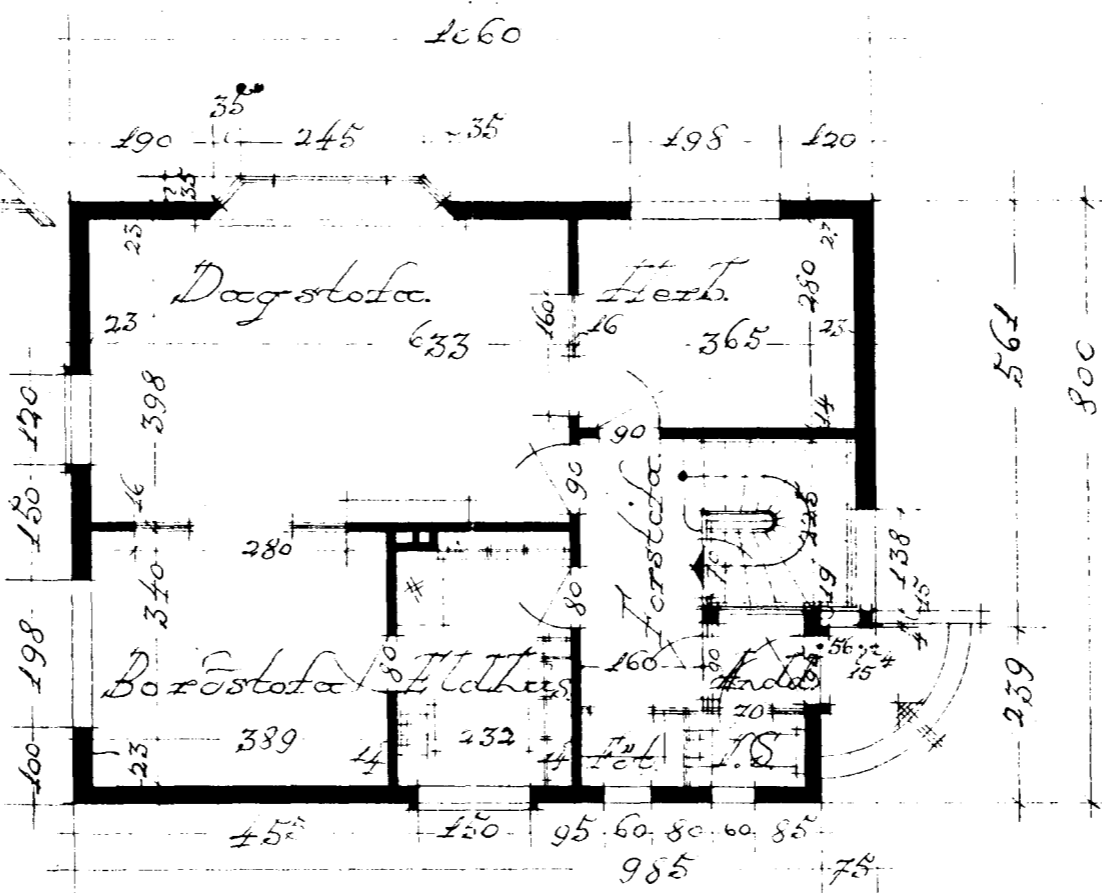
Vesturlíð.



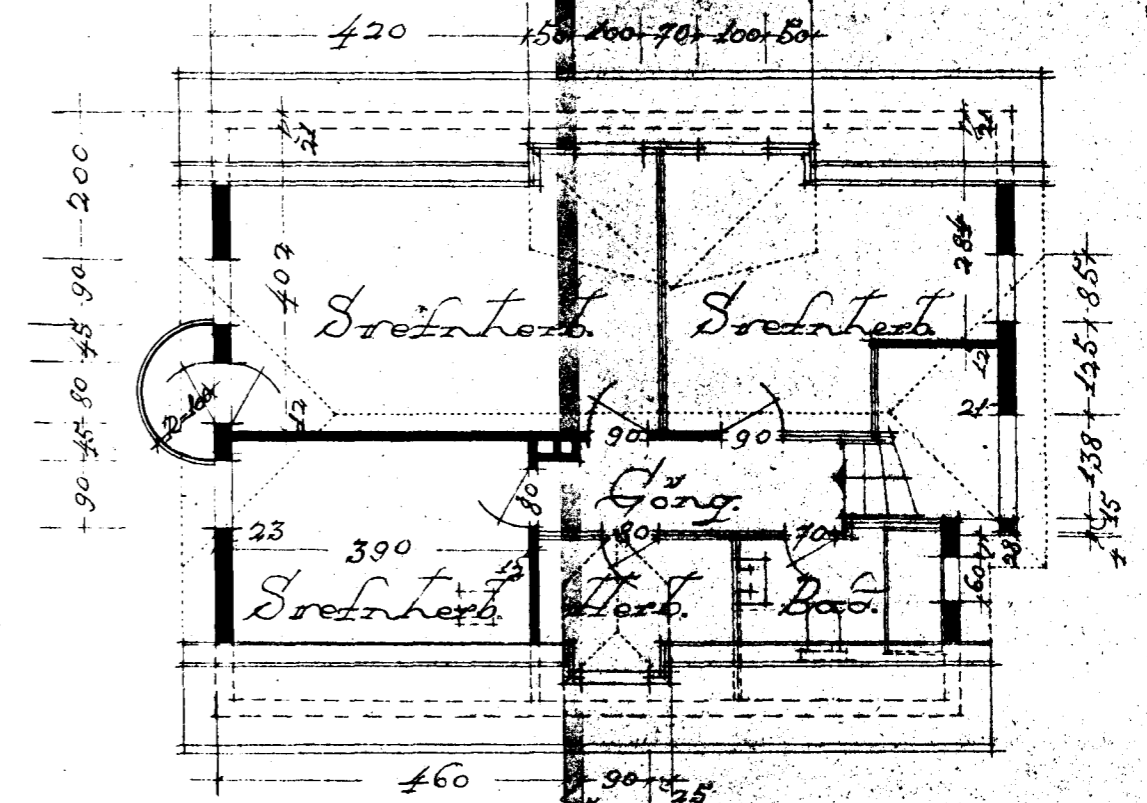
1. hæð.



Sneiðing.



1. hæð.



2. hæð.

Dejligarík í N. 1/2.
Einar Sveinsson