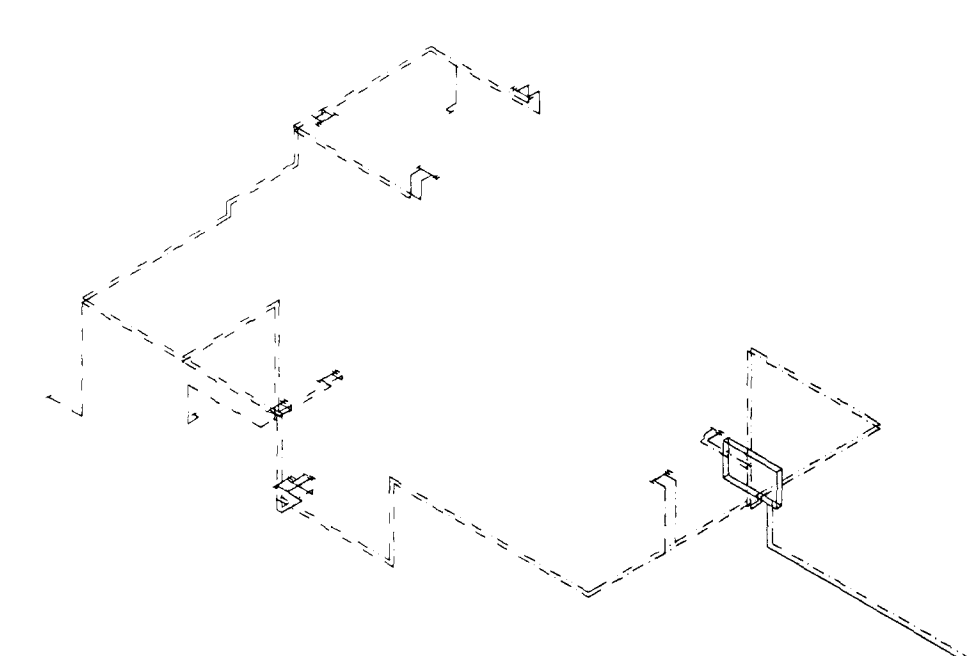
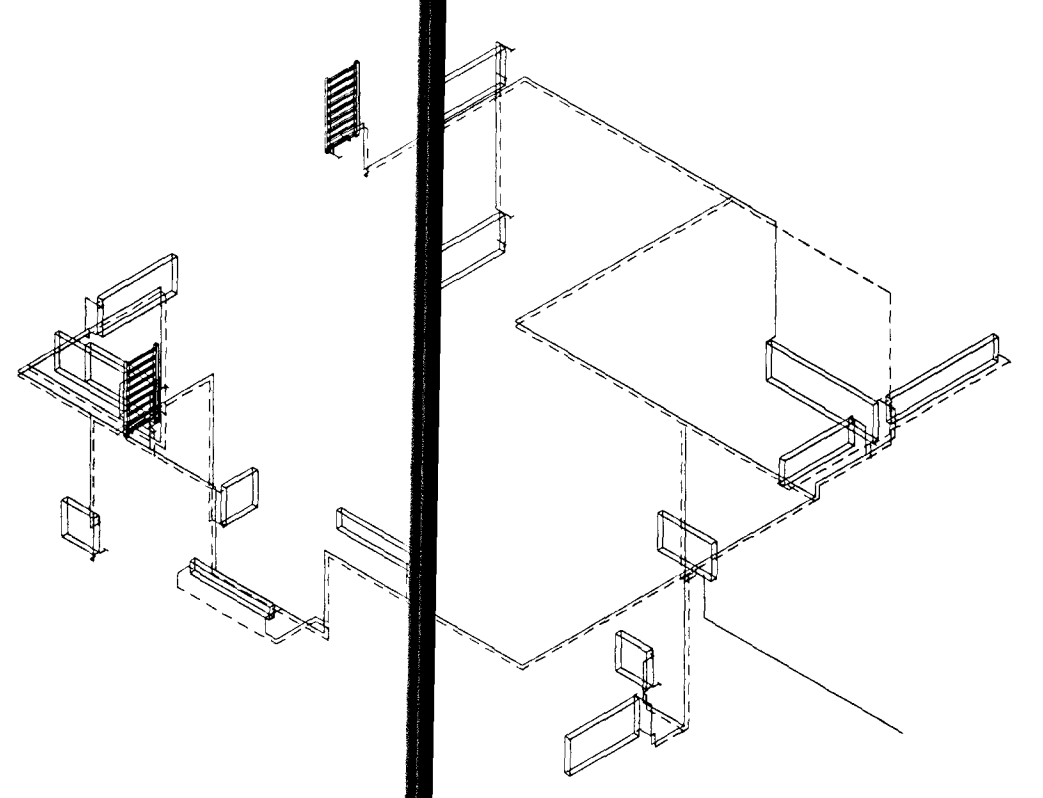


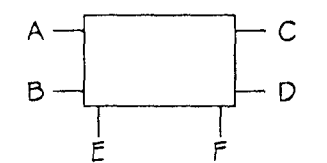
SVÖLUÁS 8
RÚMMYND HITAGNA
MKV. 1:50

SVÖLUÁS 8
RÚMMYND NEYSLUVATNSLAGNA
MKV. 1:50



SVÖLUÁS 8
OFNATAFLA $\Delta T = 40^\circ C$

| Ofn nr. | hef. herbergis nr. | reikn. vinnuþap kva/ft | mesta stærð ofns t x l mm | stútar | ofnloka | valdar ofnar |
|----------|--------------------|------------------------|---|--------|---------|--------------|
| 101 | ANDDYR | 680 | 600 x 800 | A-B | FJVR | |
| 102 | HERBERGI | 1120 | 600 x 1300 | A-B | RA2000 | |
| 103 | STIGI | 1050 | 200 x 1500 | A-B | RA2000 | |
| 104 | PVIH. | 500 | 600 x 600 | A-B | FJVR | |
| 105 | GEYMSLA | 350 | 600 x 600 | A-B | FJVR | |
| 106 | BADHERBERGI | 350 | | E-F | FJVR | HANDLEDAÖFN |
| 107 | SETUSTOFA | 920 | 600 x 1300 | A-B | RA2000 | |
| 108 | SETUSTOFA | 920 | 600 x 1300 | A-B | RA2000 | |
| 109 | HERBERGI | 1060 | 600 x 1300 | C-D | RA2000 | |
| 110 | BILGEYMSLA | 1940 | 600 x 2000 | C-B | FJVR | |
| 201 | STOFA | 2450 | 400 x 2000 | C-B | RA2000 | |
| 202 | STOFA | 1650 | 400 x 1300 | A-D | RA2000 | |
| 203 | ELDHÚS | 1120 | 600 x 1300 | C-D | RA2000 | |
| 204 | HERBERGI | 1250 | 600 x 1300 | A-B | RA2000 | |
| 205 | BADHERBERGI | 770 | | F-E | FJVR | HANDLEDAÖFN |
| 206 | HERBERGI | 1060 | 600 x 1300 | C-D | RA2000 | |
| SAMTALS: | | 17190 | Valda ofna skil bera undir höfnuð áður en smíði heima hefst | | | |



Samþykkt þann
3. DES. 2001
Byggingafræðingur
F.h. Sigurbjartur Halldórsson

| Br. nr. | Dags. | Af. | Breyting |
|---------|-------|-----|----------|
| Ⓐ | | | |
| Ⓑ | | | |
| Ⓒ | | | |
| Ⓓ | | | |

**TEIKNISTOFAN
TORGÍÐ**
RÁÐGJÖF - HÖNNUN - EFTIRLIT

ARMÓLI 36, 108 REYKJAVÍK, Sími 568-8866, FAX 568-8878
Þorsteinn Friðólfsson, Magnús B. Ólafursson, Innviðisarkitekt.
Byggingotakniðráðingur, Kt. 211055-5299, Kt. 240654-5559

**SVÖLUÁS 8
HAFNARFJÖRÐUR**

Tekningarheiti: HITA- OG NEYSLUVATNSLAGNIR
RÚMMYNDIR
OFNATAFLA

Dags. 23.07.2001 Kvarði 1:50/1:100
Hannað DF Teknað VÓJ Samþ. *[Signature]*
Verkt. 01-809 Tekn.nr. 803 Breyt.nr.