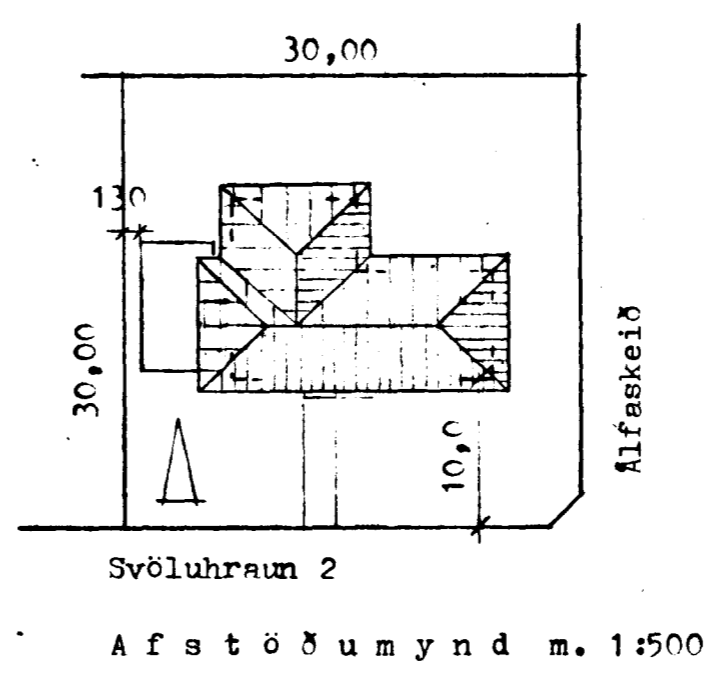
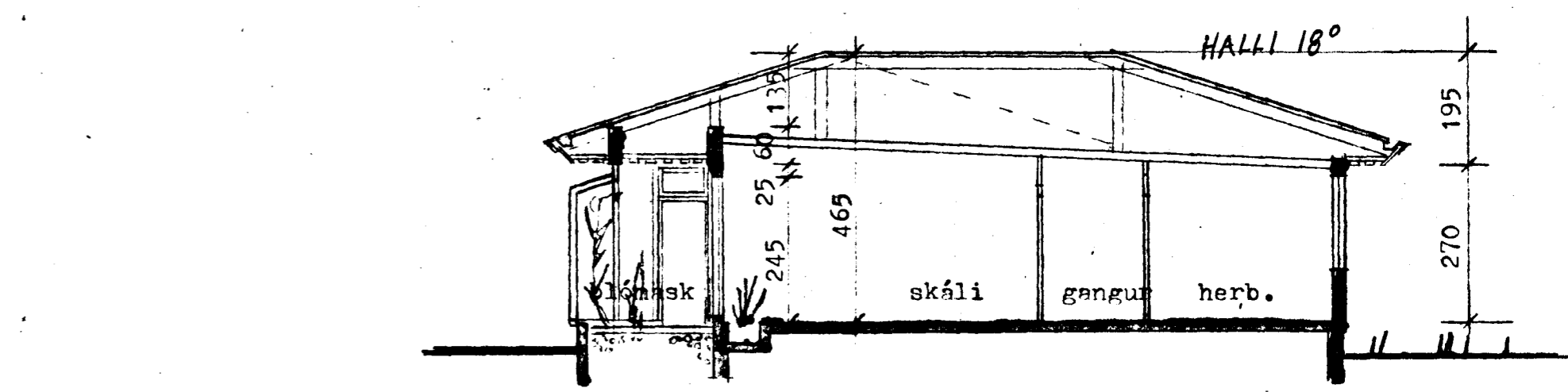
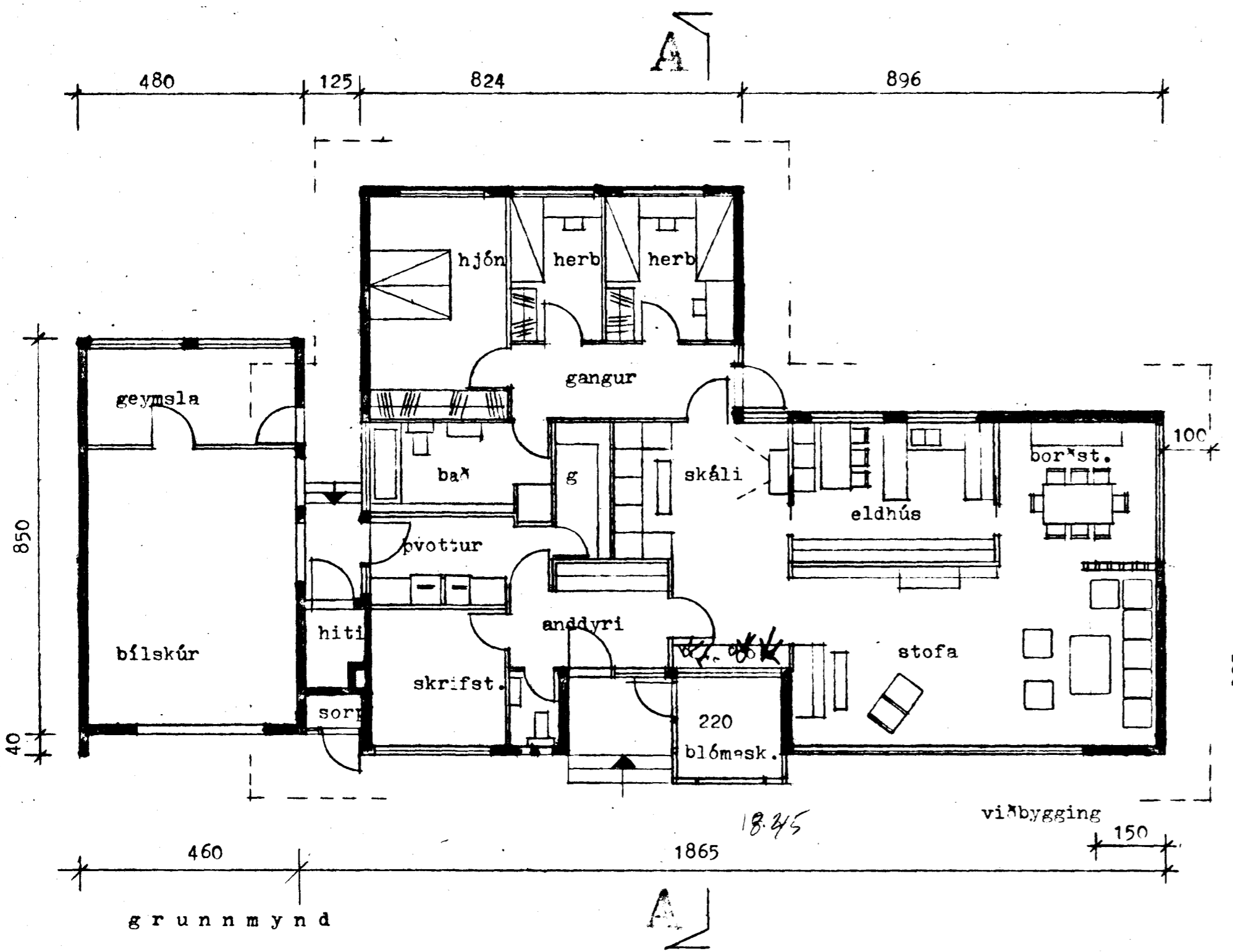
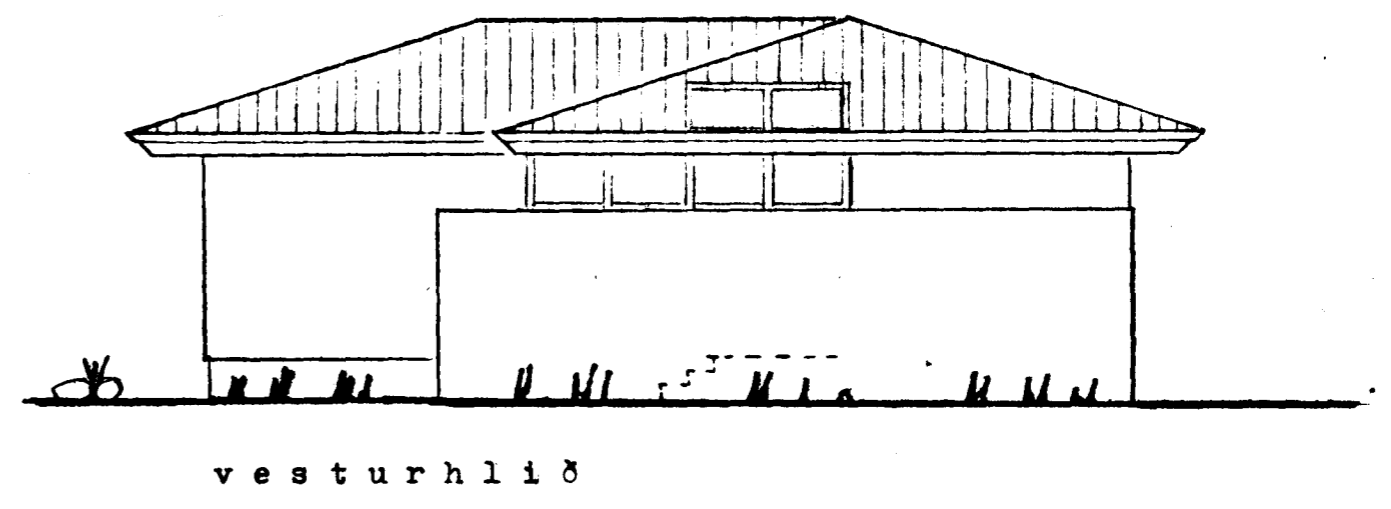
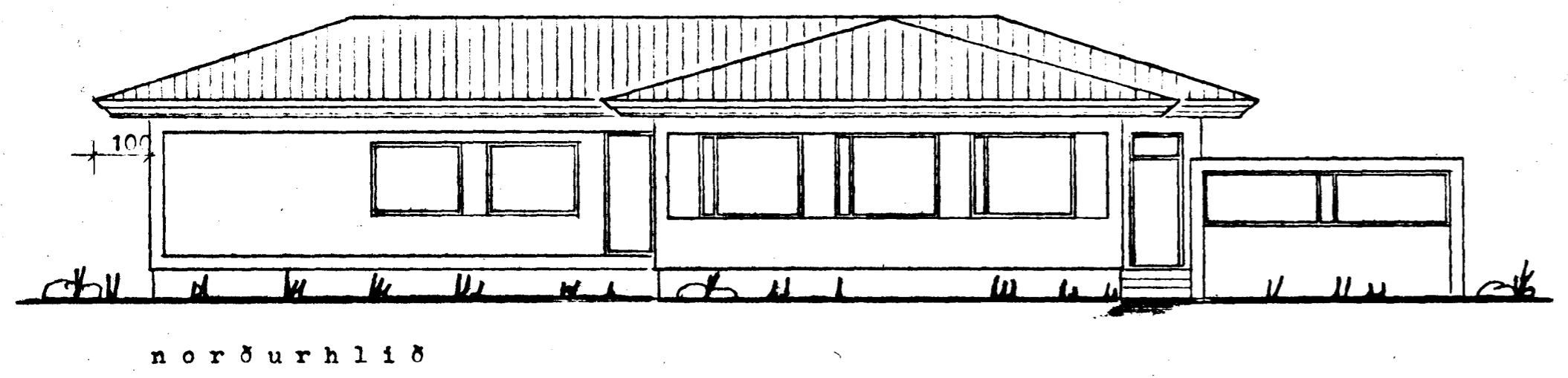
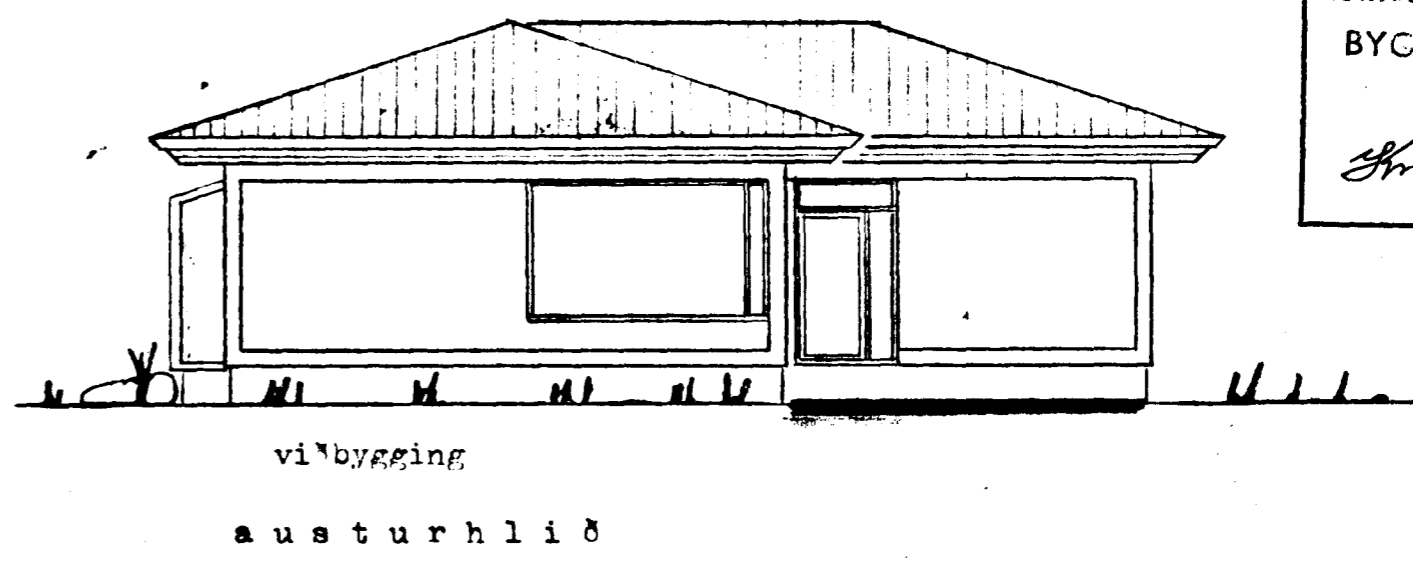
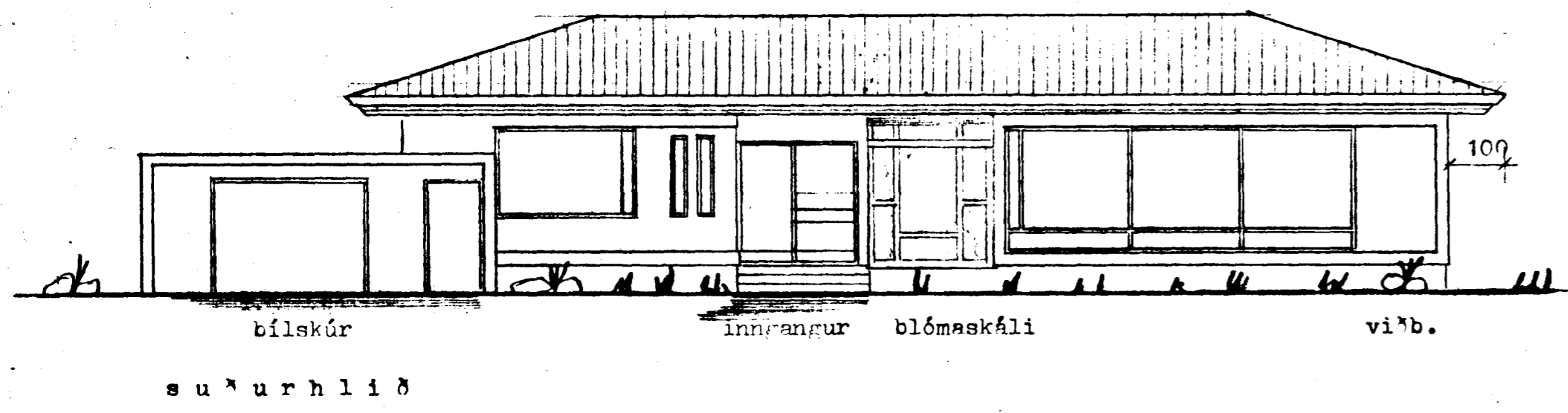


Semþykkt á fundi bygginga-
nefndar þ. 8/15 1985
BYGGINGAUFULLTRUFIN
Í HAFNARFIRÐI
Þorsteinn Þorsteinsson



Viðbygging	5,92 m ²	20,10 m ³
Blómaskáli	4,85 m ²	
Þak	243,70 m ²	

Einbýlishús Hans Linnets, Svöluhrauni 2, Hafnarfirði	1
grunnmynd, útlit, skurður afstöðumynd	m. 1: 100 m. 1: 500

Teiknistofa Hauks Viktorssonar,
Bráraborgarstíg 7, Rvík. s. 10960. marz 1985
Haukur Viktorsson