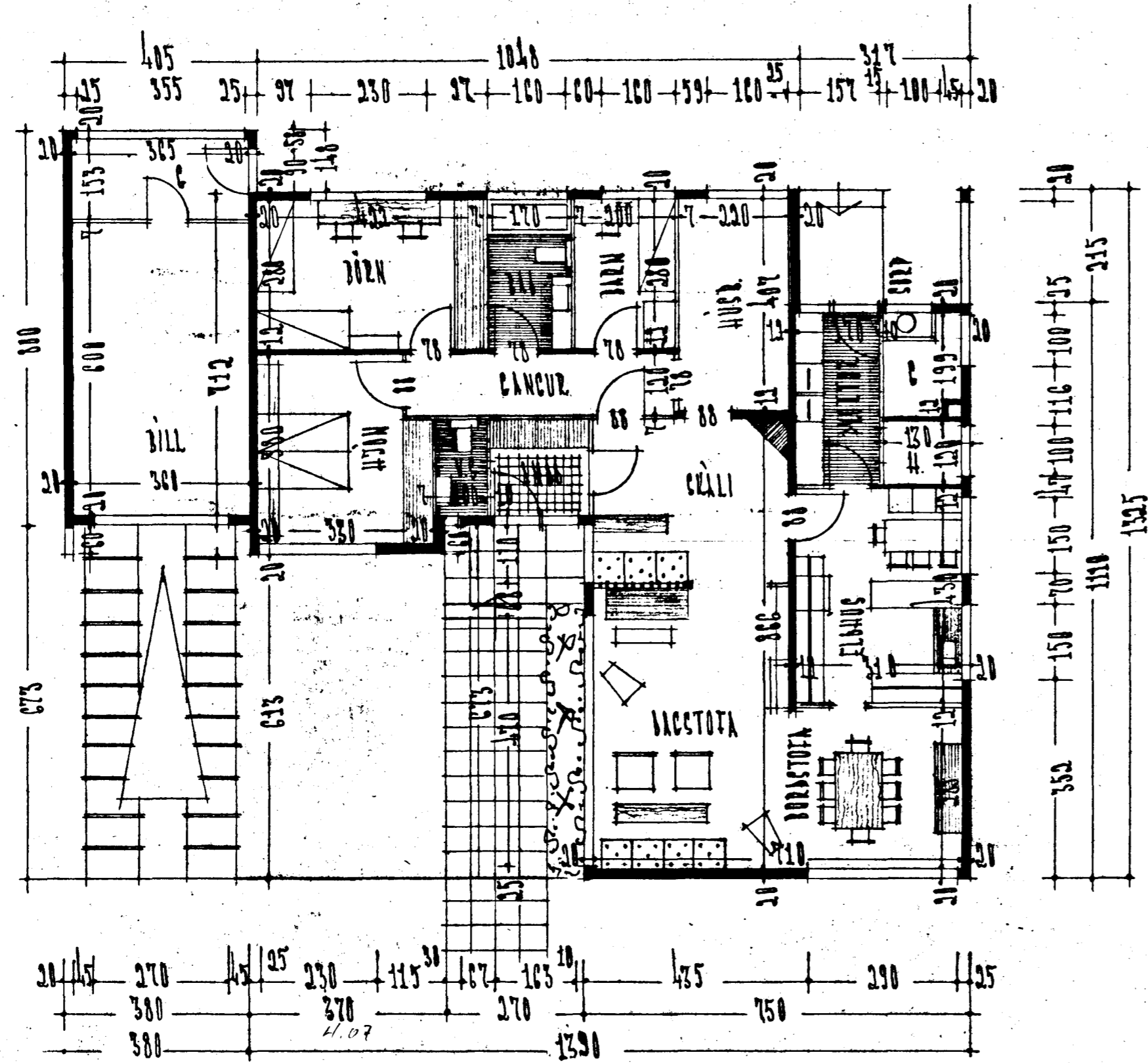
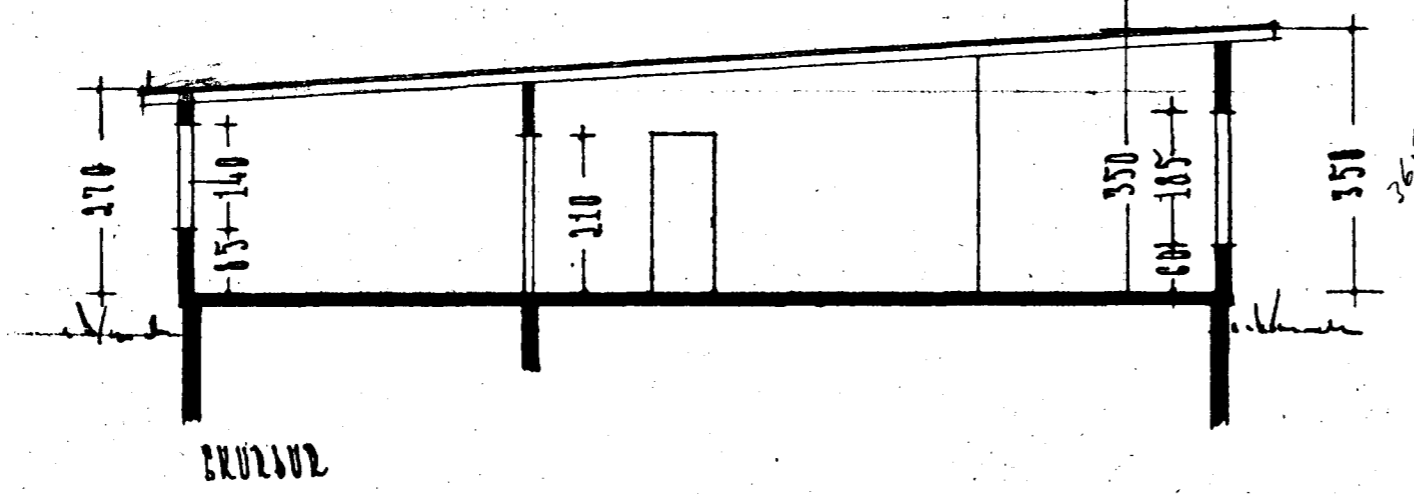
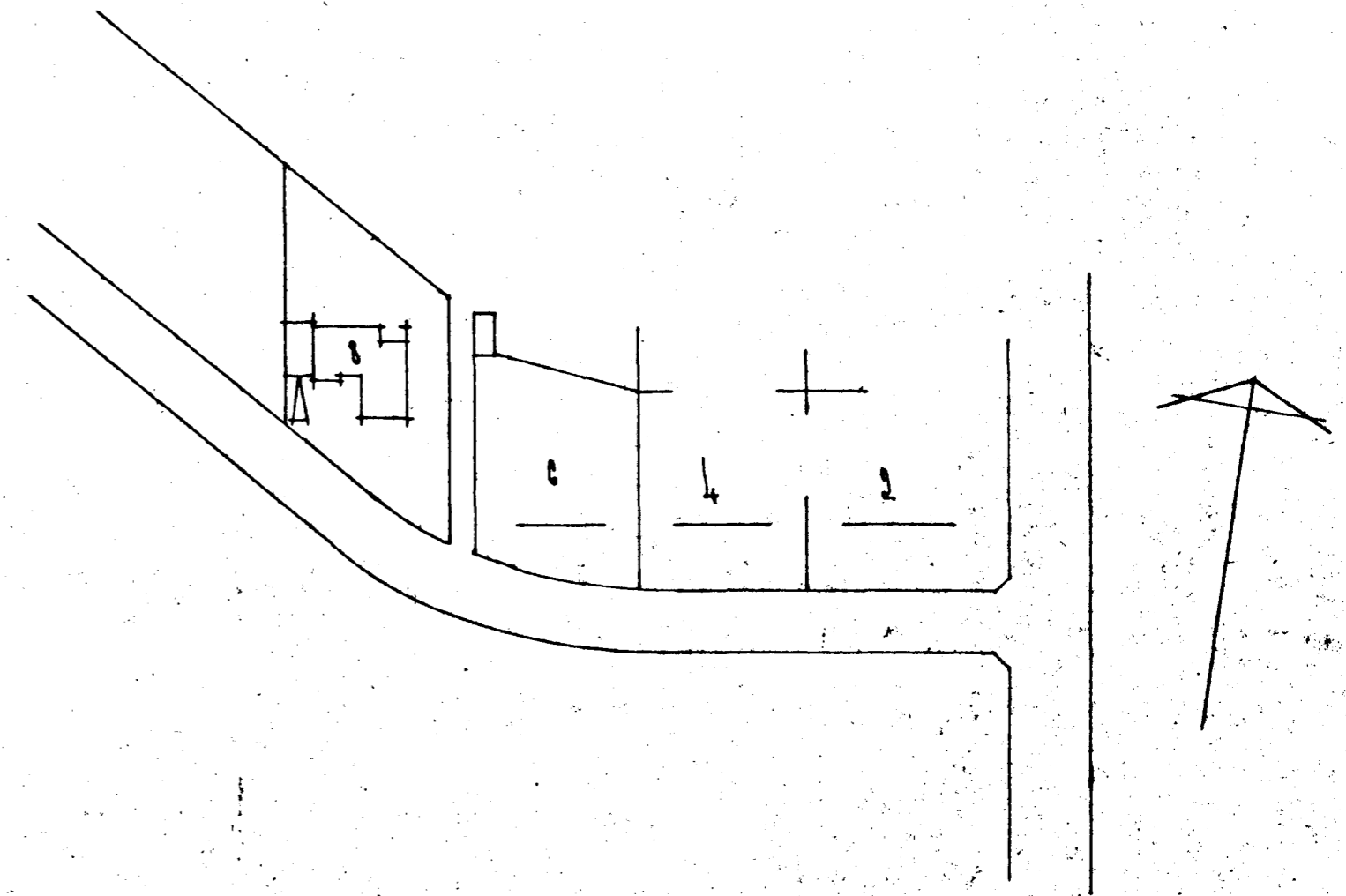


Samþykkt á fundi bygginga-
nefndar þ. 23. 7. 1965
BYGGINGARLITRÁÐIÐ
HAFNARFIRSI



GRUNNMUNO Ríng málsetning - Málsetning sbr nr. 12 við Svölubraun!
B.I

ATSTÖJUMYNI M 1:1000
FLATAFMÁL HÜSS 120.50 M²



REKJAVÍK Í JÚLÍ 1965
Þjástarn Sveinsson