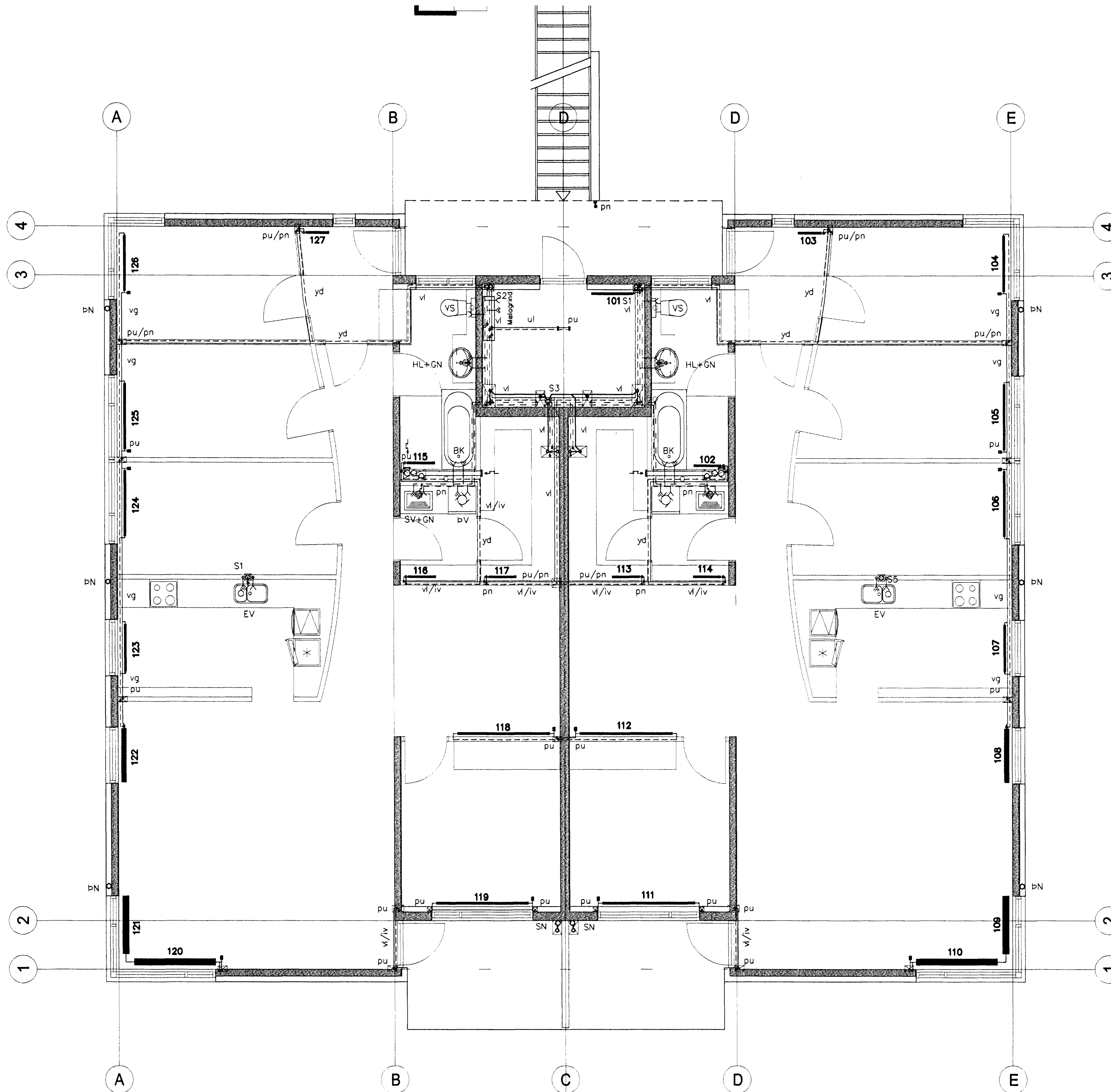


GRUNNMYND 1.HÆÐ OG LOFT 1:50

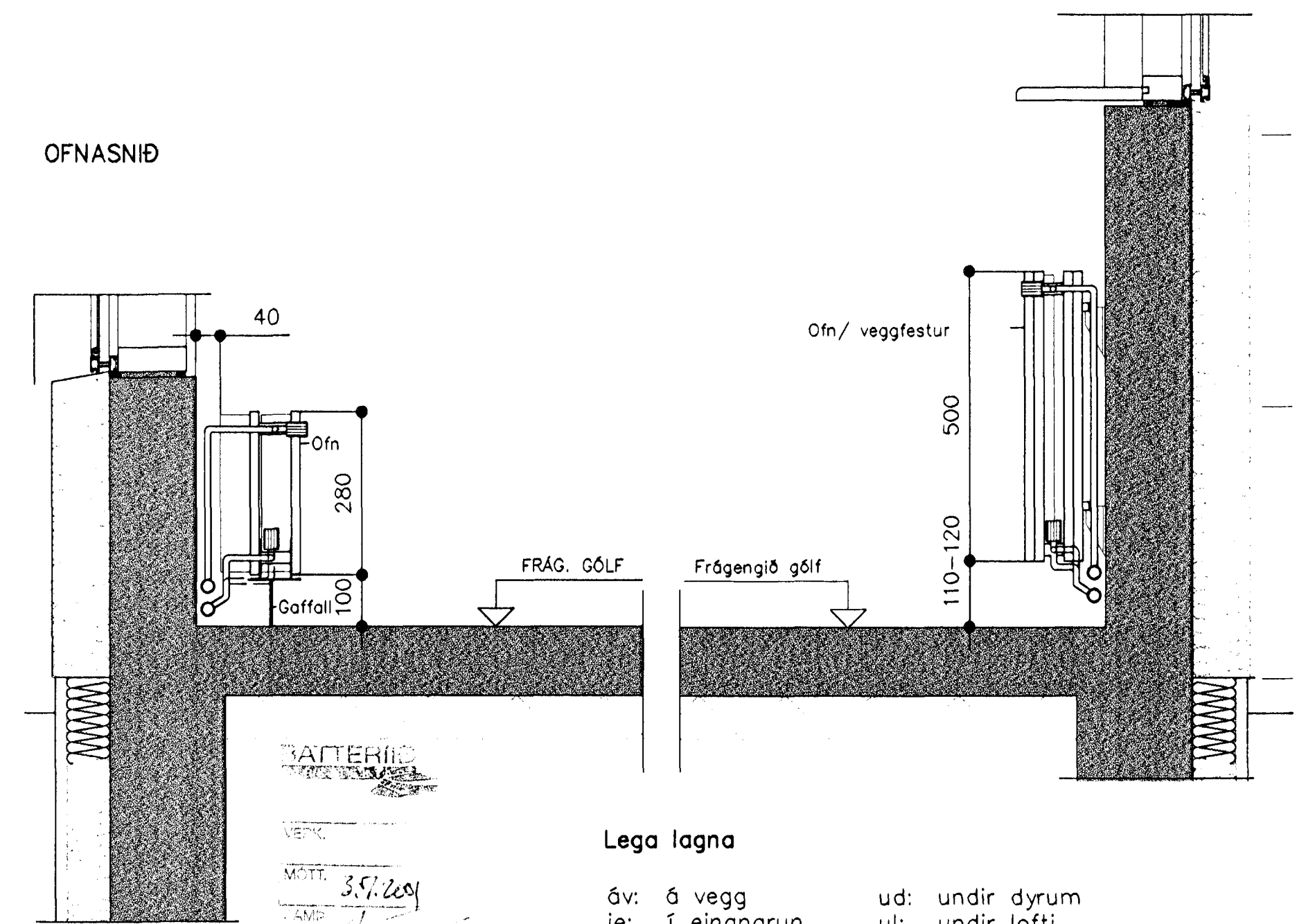


OFNASKRÁ

Ofnar skulu vera vottaðir af Rennsóknarstofnun Byggingarinnar samkvæmt ÍST EN-442
Ofnlokar= Heimeilar - Ofnar delta-t=40°C - Ofnatengi = 10mm

númer	rými	wött/klst	ofnatengund	festing	stútar	ofnloki	tala	fjöldi	stilli-
101	Geymsla	568	P11-500/900	Veggf.	A+B+C+D	RTL	-	1	
102	Bað	729	P22-500/600	Veggf.	A+B+C+D	RTL	-	1	
103	Anddyri	607	P22-500/500	Veggf.	A+B+C+D	RTL	-	1	
104	Herbergi 1	1458	P22-500/1200	Veggf.	A+B+C+D	F-exakt	4,0	1	
105	Herbergi 2	1260	P21-500/1400	Veggf.	A+B+C+D	F-exakt	4,0	1	
106	Herbergi 3	1260	P21-500/1400	Veggf.	A+B+C+D	F-exakt	4,0	1	
107	Eldhús	900	P21-500/1000	Veggf.	A+B+C+D	RTL	-	1	
108	Stofa	1101	VK+C-280/1150	Gólf.	A+B	RTL	-	1	
109	Stofa	1150	VK+C-280/1200	Gólf.	C+D	-	-	1	
110	Stofa	1629	VK+C-280/1700	Gólf.	A+B+C+D	F-exakt	4,0	1	
111	Herbergi 4	1263	P11-500/2000	Veggf.	A+B+C+D	F-exakt	4,0	1	
112	Fjölskylduherbergi	1263	P11-500/2000	Veggf.	A+B+C+D	F-exakt	4,0	1	
113	Geymsla 2	379	P11-500/600	Veggf.	A+B+C+D	RTL	-	1	
114	Þvottur	379	P11-500/600	Veggf.	A+B+C+D	RTL	-	1	
115	Bað 2	729	P22-500/600	Veggf.	A+B+C+D	RTL	-	1	
116	Þvottur 2	379	P11-500/600	Veggf.	A+B+C+D	RTL	-	1	
117	Geymsla 3	379	P11-500/600	Veggf.	A+B+C+D	RTL	-	1	
118	Fjölskylduherbergi 2	1263	P11-500/2000	Veggf.	A+B+C+D	F-exakt	4,0	1	
119	Herbergi 5	1263	P11-500/2000	Veggf.	A+B+C+D	F-exakt	4,0	1	
120	Stofa 2	1629	VK+C-280/1700	Gólf.	A+B+C+D	F-exakt	4,0	1	
121	Stofa 2	1150	VK+C-280/1200	Gólf.	A+B	-	-	1	
122	Stofa 2	1101	VK+C-280/1150	Gólf.	C+D	RTL	-	1	
123	Eldhús	900	P21-500/1000	Veggf.	A+B+C+D	RTL	-	1	
124	Herbergi 6	1260	P21-500/1400	Veggf.	A+B+C+D	F-exakt	4,0	1	
125	Herbergi 7	1260	P21-500/1400	Veggf.	A+B+C+D	F-exakt	4,0	1	
126	Herbergi 8	1458	P22-500/1200	Veggf.	A+B+C+D	F-exakt	4,0	1	
127	Anddyri 2	607	P22-500/500	Veggf.	A+B+C+D	RTL	-	1	
Samtals			Orkuþjafi alls wött/klst	27,324		Fjöldi ofna alls	27		
Ofnlokar alls:			A framrás	12		A bakrás	13		

OFNASNIÐ



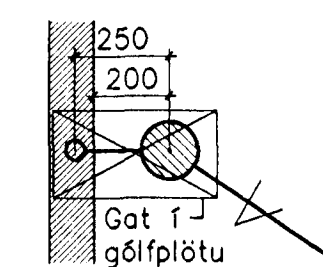
Lega lagna

- sv: á vegg
- ie: í einangrun
- ig: í gólfrauf
- iv: í veggrauf
- pn: pípa fer niður
- pu: pípa fer upp
- ud: undir dyrum
- ul: undir lofti
- vg: við gólf
- vl: við loft
- yd: yfir dyrum
- yg: yfir glugga

Rúmmyndir og teksti: sjá teikningu PR01

Byggingatillit frá Hafnarfjarðar
Algreitt þann
09 JULI 2001
V.C.

GN+HL/SV



Breytingar	Nr.	Dags.	Nafn
ÞRASTARÁS 10 HF.			
Verkfæðistofa Þráinn & Benedikt Laugavegi 178, 105 Rvk. Sími: 553 1770, 568 7775, Fax: 568-7701 Netfang: post@islandia.is			HBS T BD S M 1:50 Nr. P101 Dags. 1. útgáfa 08/01/08
Lagnir inni			

08/01/08