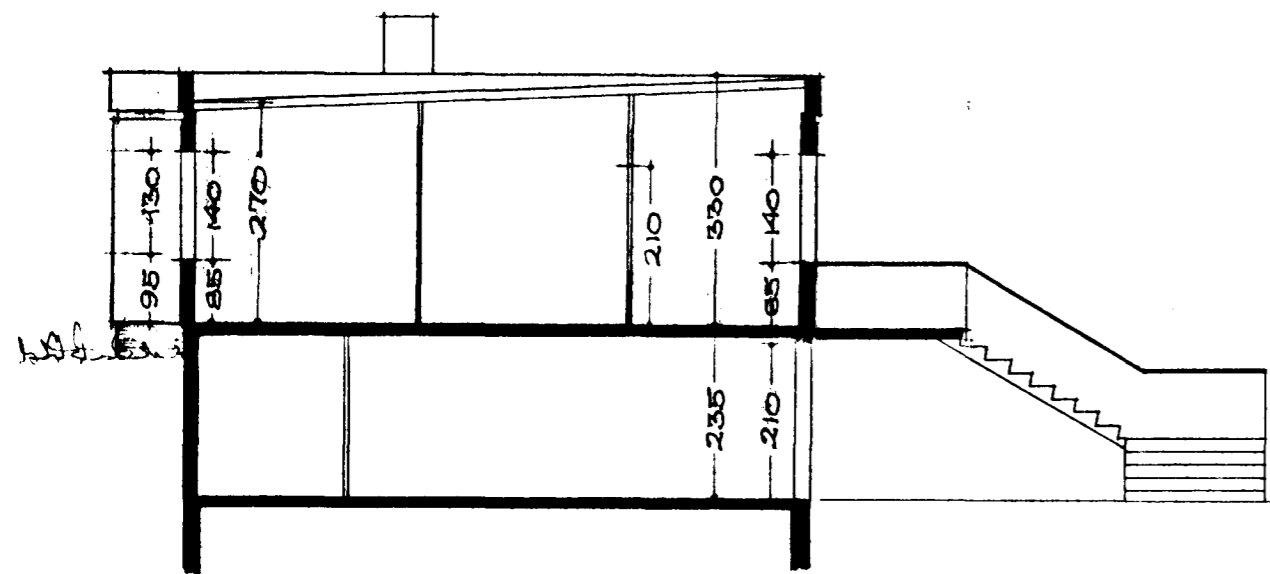
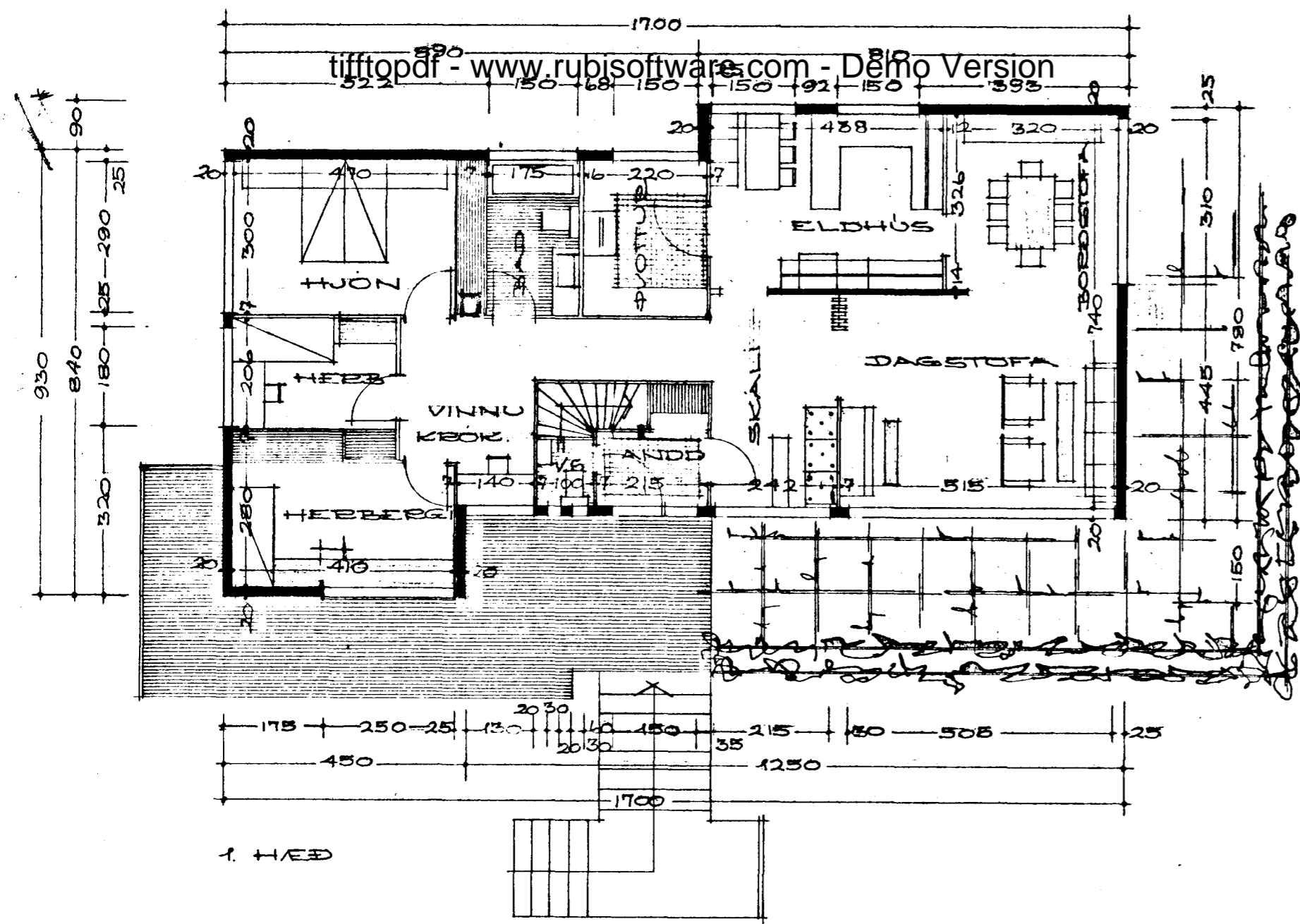


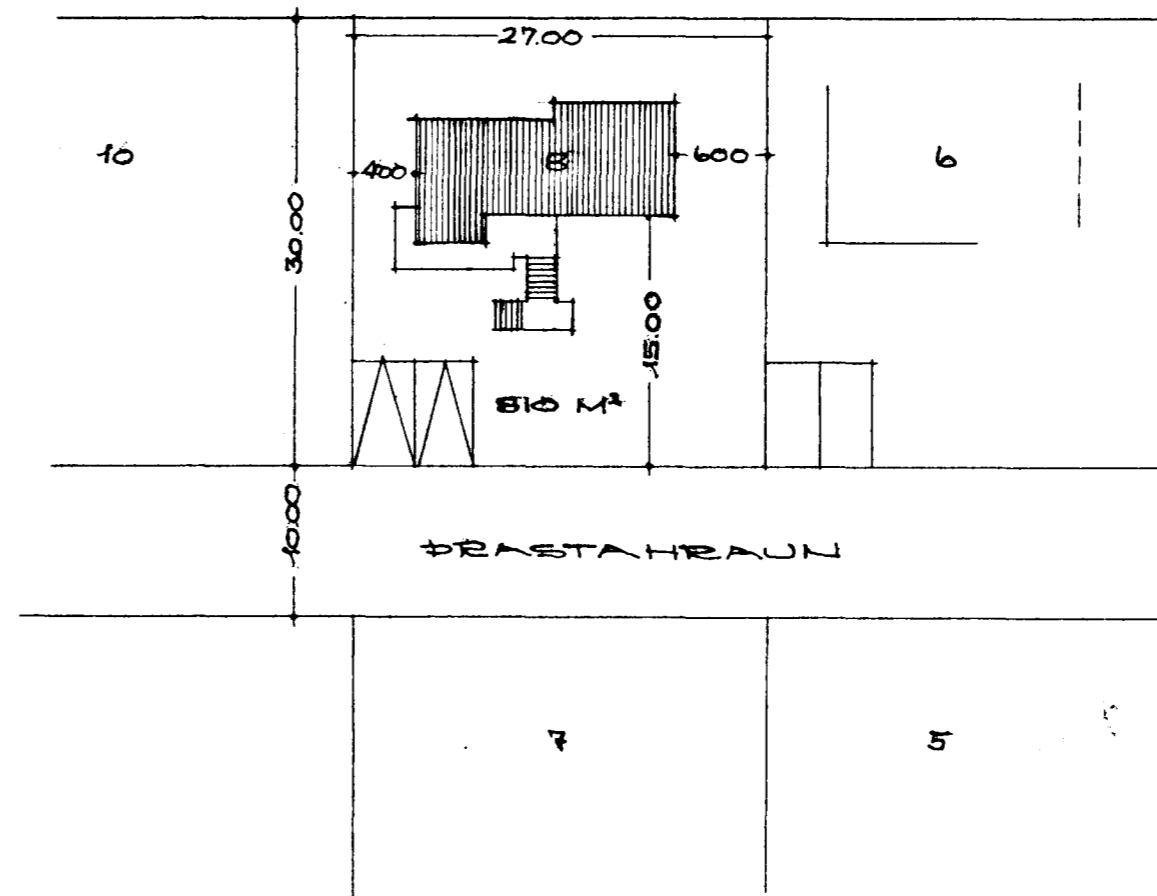
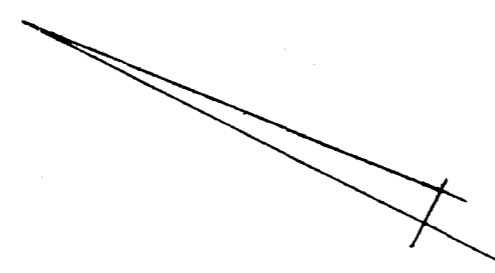
ÞRASTAHLAUN NR 8 HAFNARFJEDI M:1:100



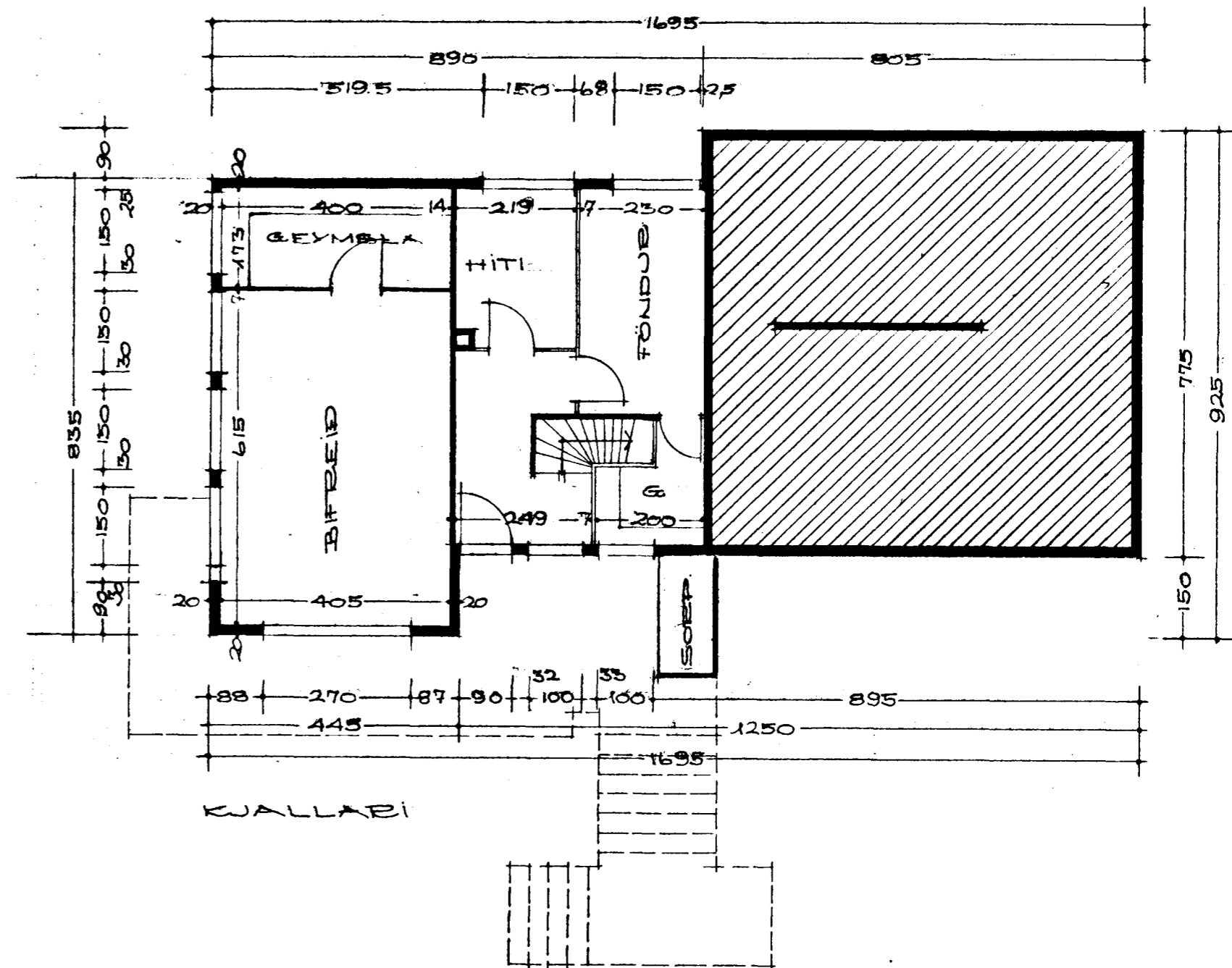
SKURÐUR



1. HÆÐ



AFSTÖÐUMYND. 1:500  
FLATARMÁL HÚSS: 131,34 M²



REYKJAVÍK | SEPT. 1964

Þjartan Sveinsson

Arnandi Ágústsson  
Húsa- og  
Stofu-  
málaráðgjafi  
Gættur Halldórsson