

Atis fr. Geirs Gunnarssonar,

Hafnarfirði

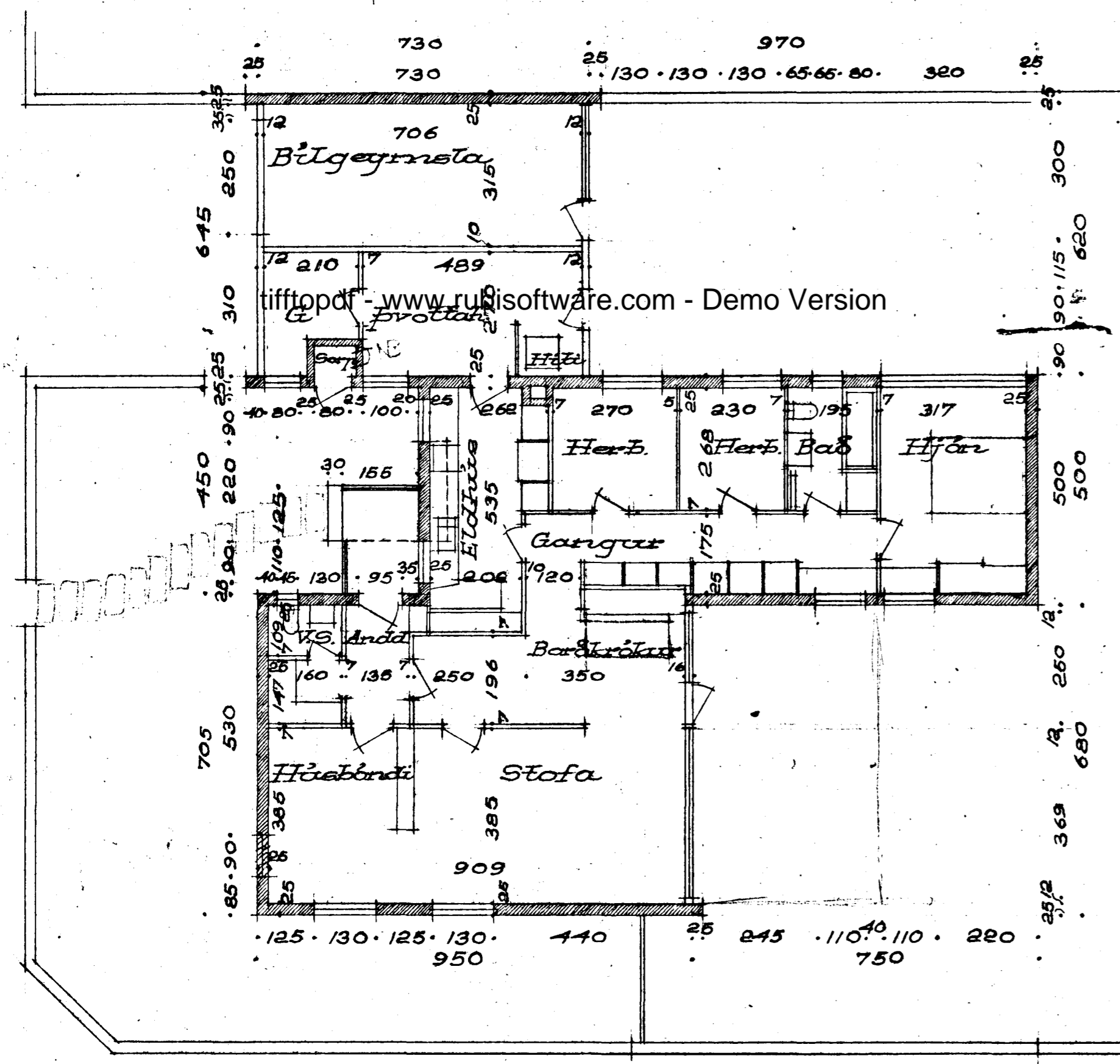
1:100

df. 22/6 1956

Reykjarnesbraut

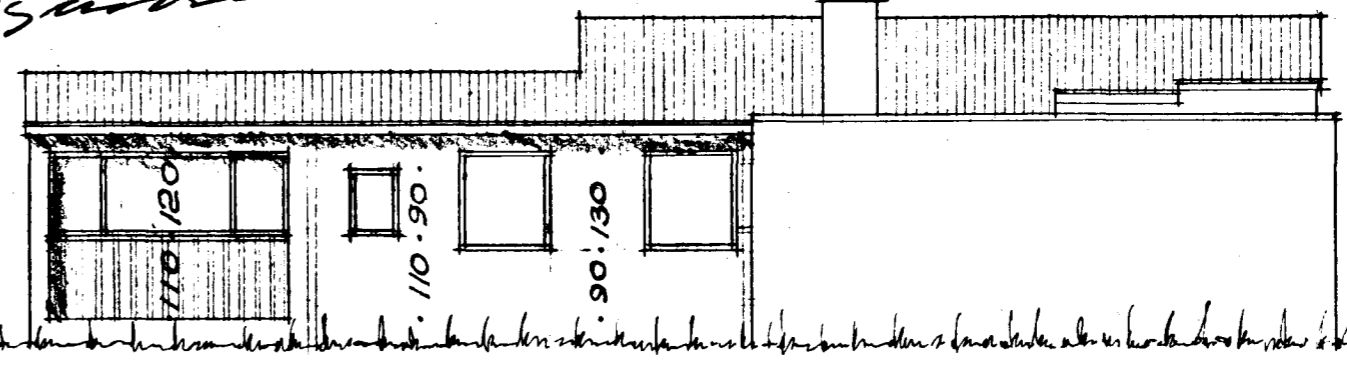
LÖB: 628,4 m<sup>2</sup>  
IBÖB: 154,75 m<sup>2</sup>  
Biltek: 24,82 m<sup>2</sup>

Afstöðumynd

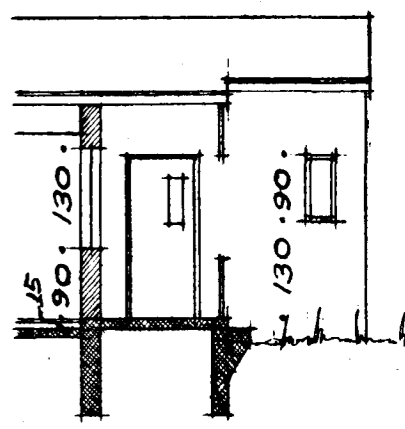


Grunnmýnd

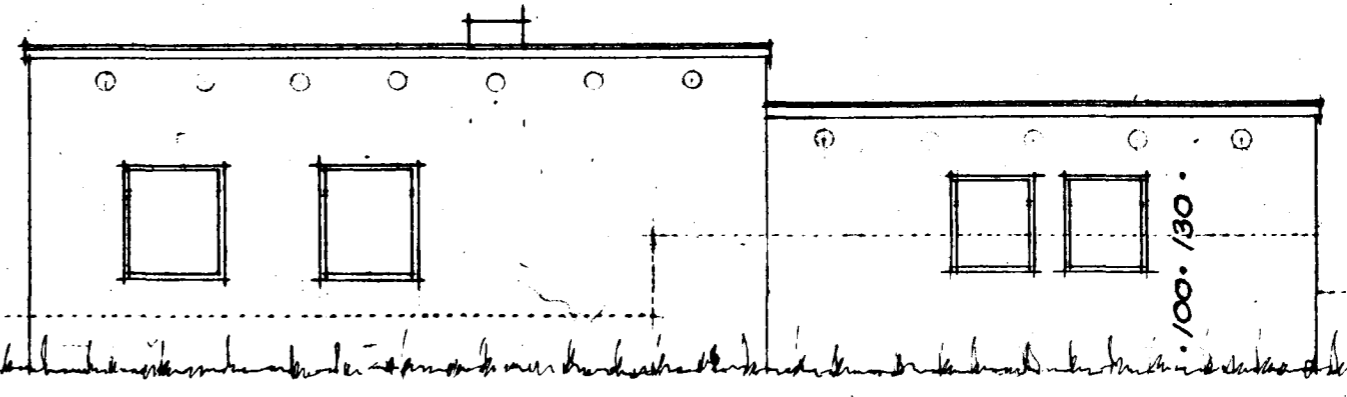
Stalheimsson  
húsaln.  
Einar Kjartan



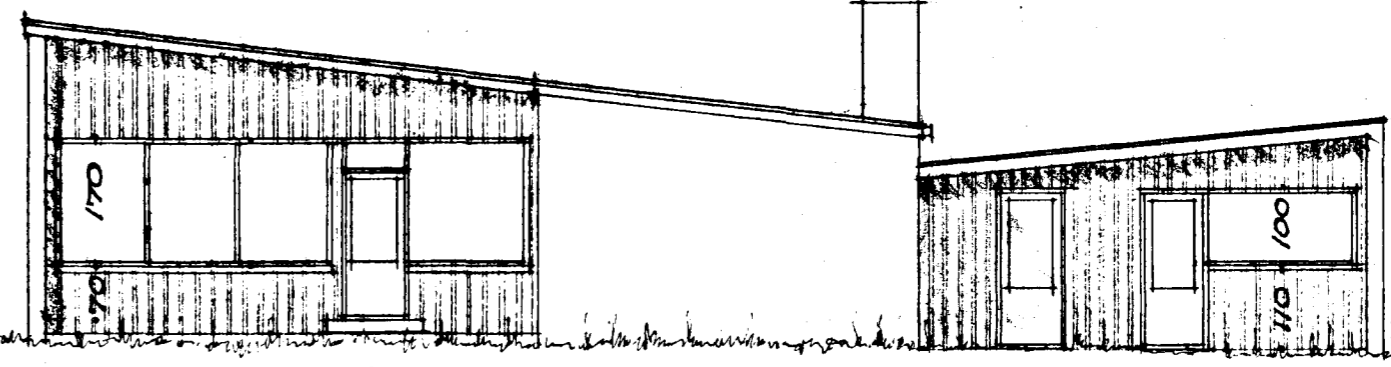
Suð-vestur



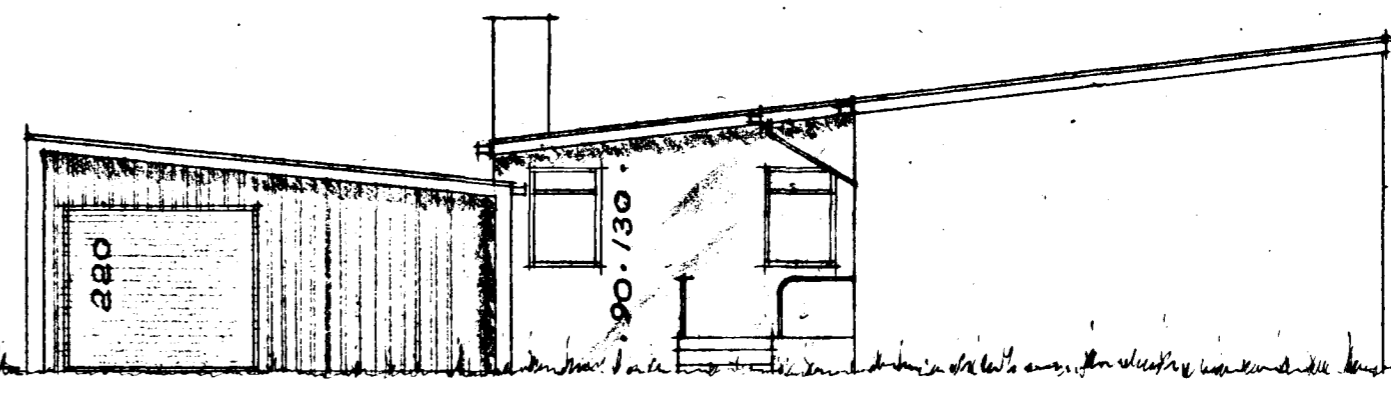
Skurður



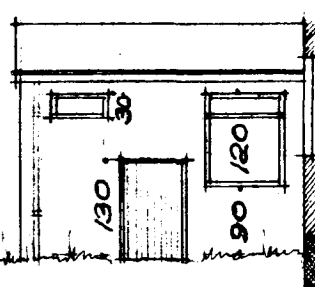
Norð-vestur



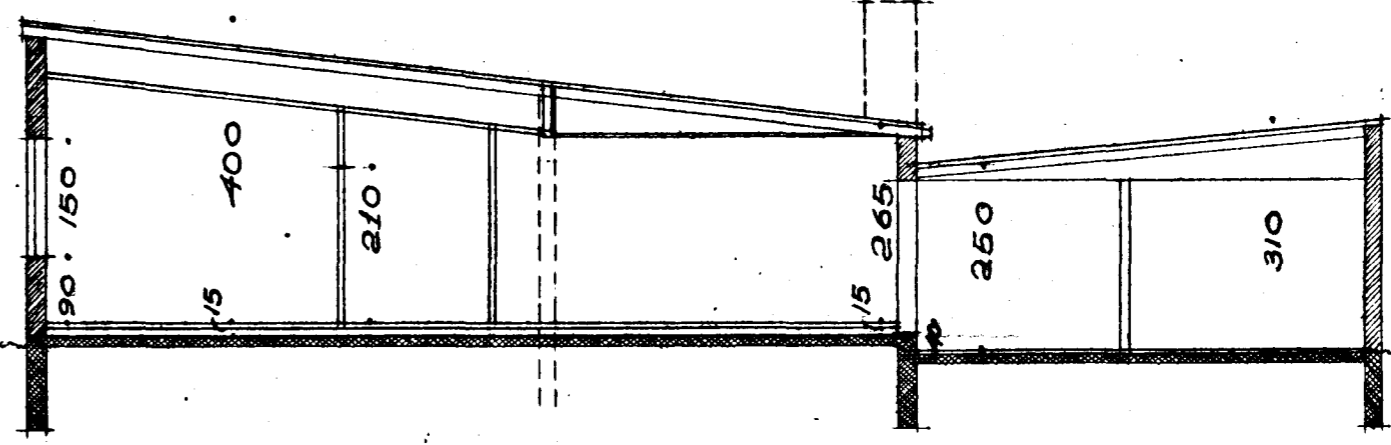
Suð-vestur



Norð-vestur



Skurður



Skurður

Reykjavík, 11. 5. 1956  
Sigr. Þ. Þorðarson  
arkitekt. Teikn. M. G.  
V.NR. 130-11, T.NR. 201