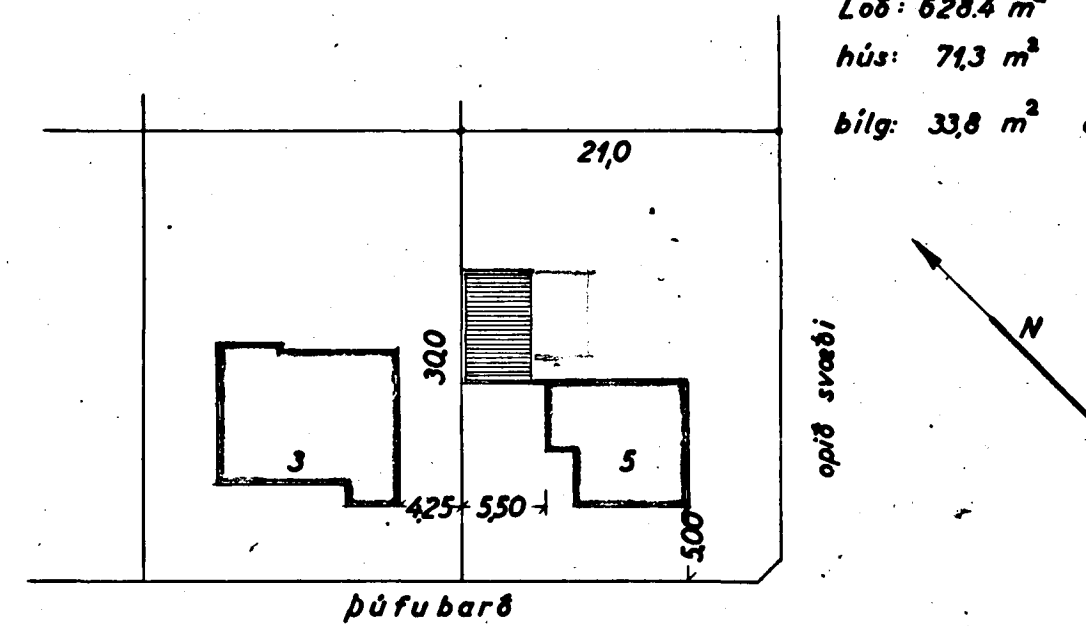


AFSTÖÐUMYND

1:500

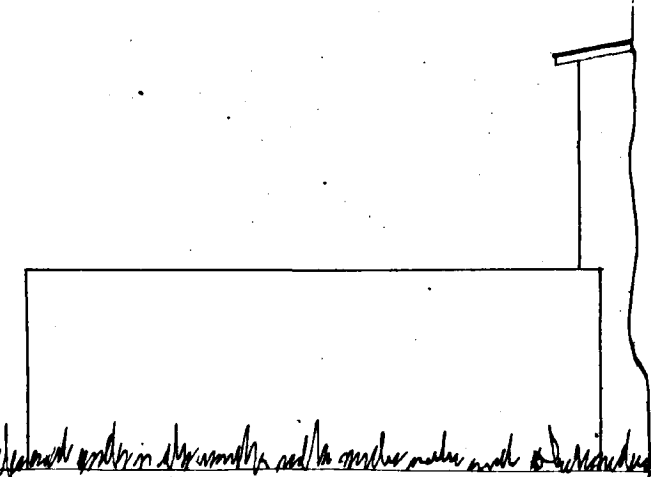
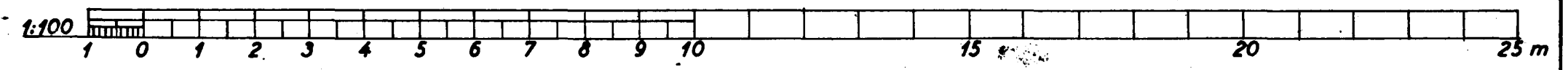
Loð: 628,4 m²
húsi: 71,3 m²
bilg: 33,8 m² 82,0 m²



Samþykkt á fundi bygginga-
nefndar þ. 2/5 1963

BYGGINGAFULLTRÚINN
fl. I HAFNARFIRÐI,
Kunst. Sigurðsson

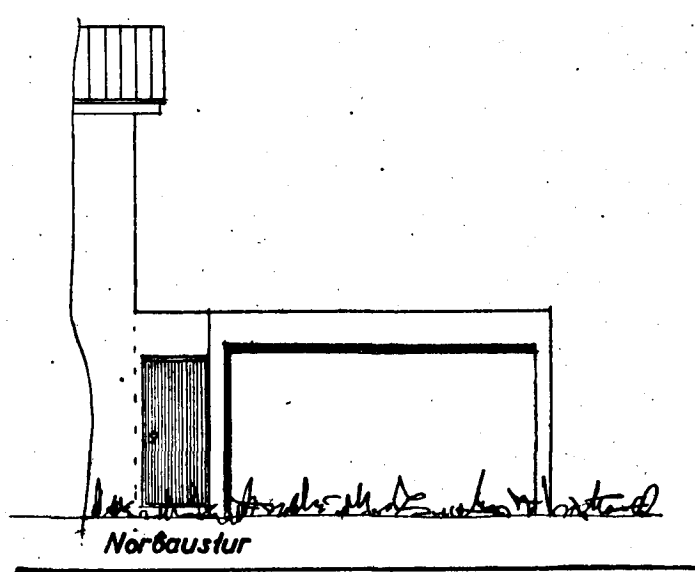
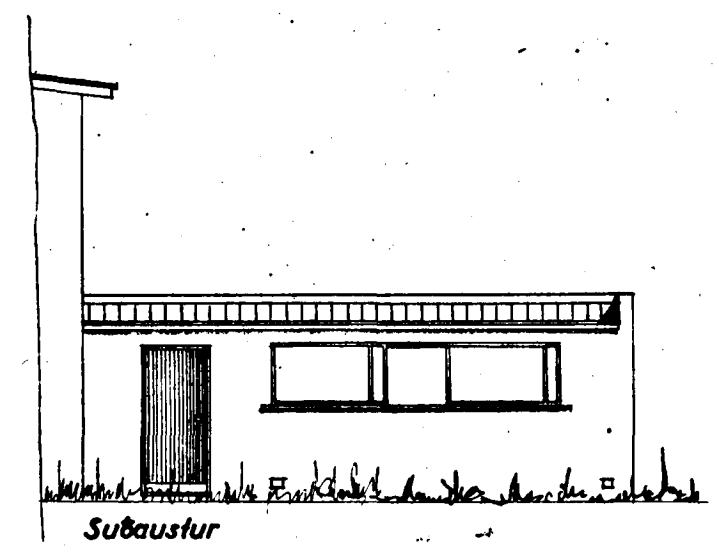
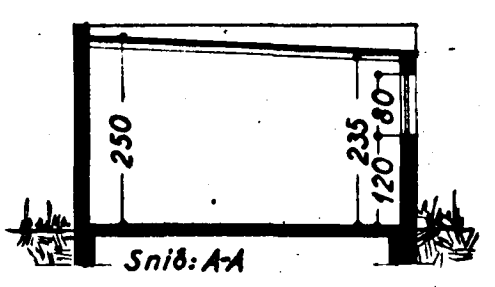
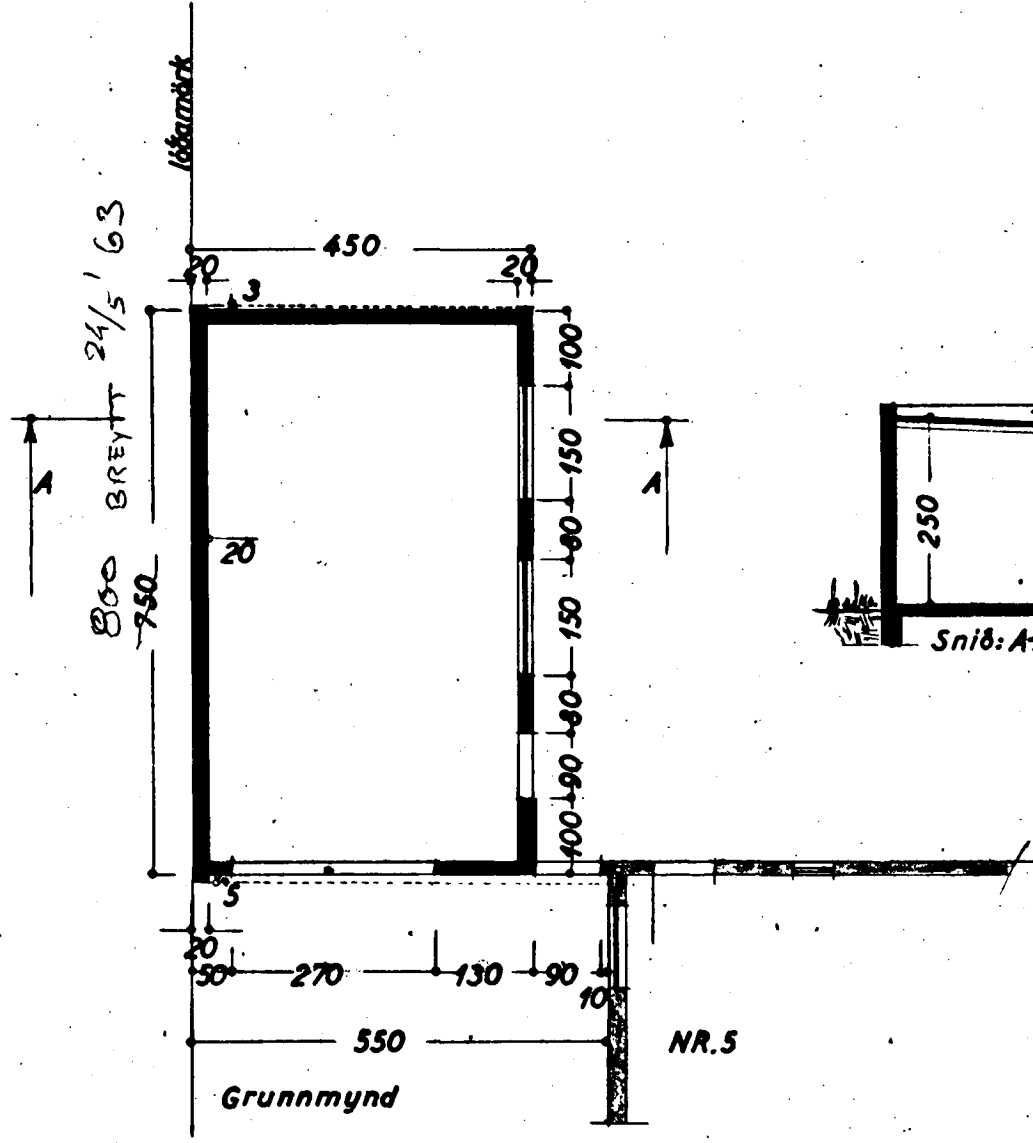
HÖSASMÍÐAMEISTARI: *Haldor Gudmundsson*
MÖRARAMEISTARI: *Johann Thorsson*



tifftopdf - www.rubissoftware.com - Demo Version

Subvestur (göfuhlið)

Norðvestur



þúfubarð nr. 5

Bilgeymsla

Grunnmynd }
Snib } 1:100
Útlit }
AFStöðumynd 1:500

Hafnarfirði í maí 1963
F. Sigurðsson