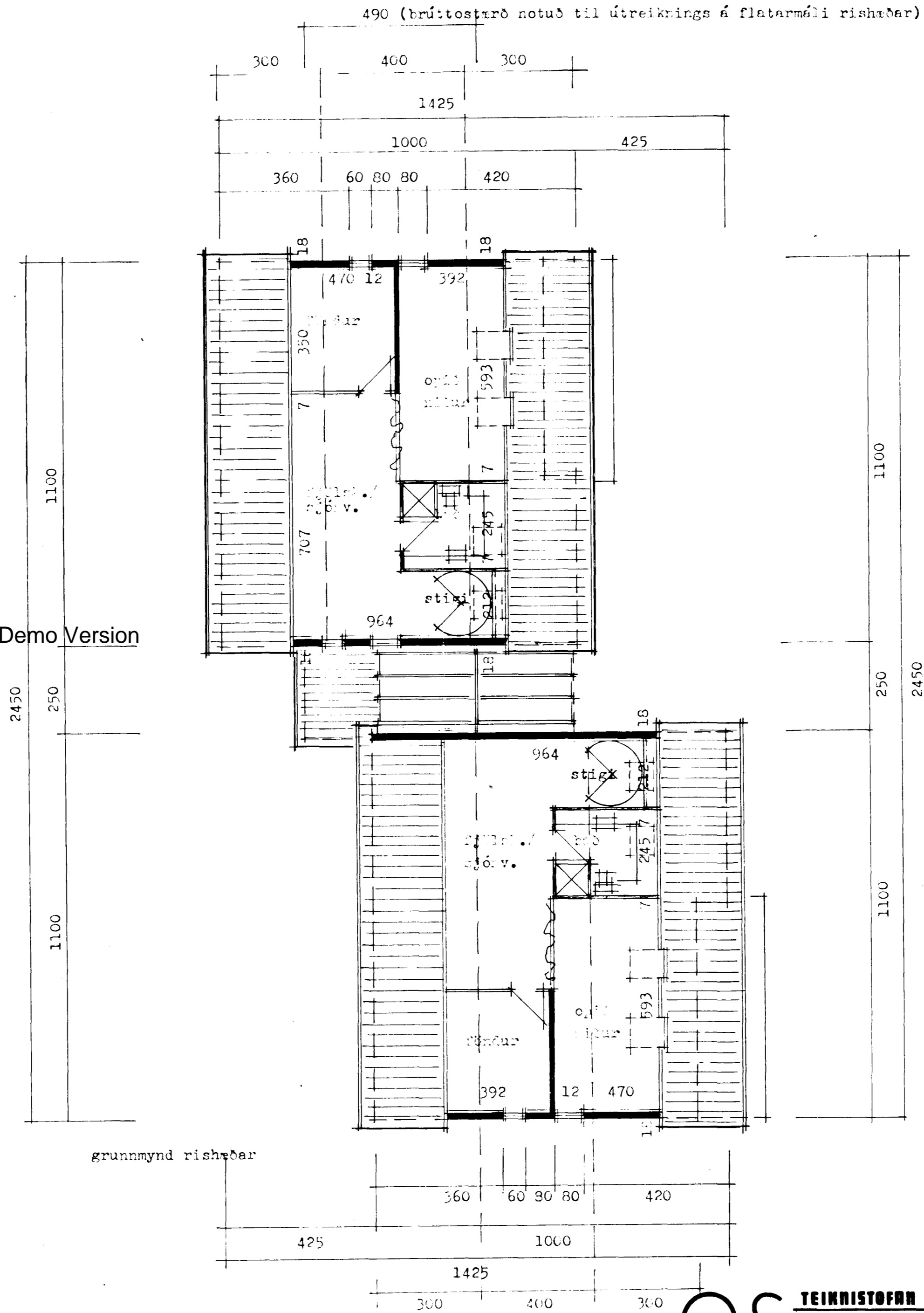


490 (brúttostíró notuð til útreiknings á flatarmáli rishæðar)



tifftopdf - www.rubissoftware.com - Demo Version

grunnmynd rishæðar

es

TEIKNISTOFN BORGARTÚNI 28 RVÍN 5.33930

EDVARD GUDMUNDSSON

SIGURDUR KJARTANSSON

DAGS. jan. 1989

BREYTT.