

Traðarberg 25-17 Hafnarfirði

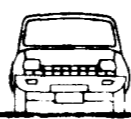
Samþykkt á fundi bygginga-  
nefndar p. 14.7.88

BYGGINGARFRUM  
HAFNARFIRÐI

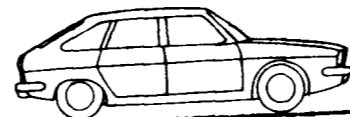
STADALHÚS

Traðarberg

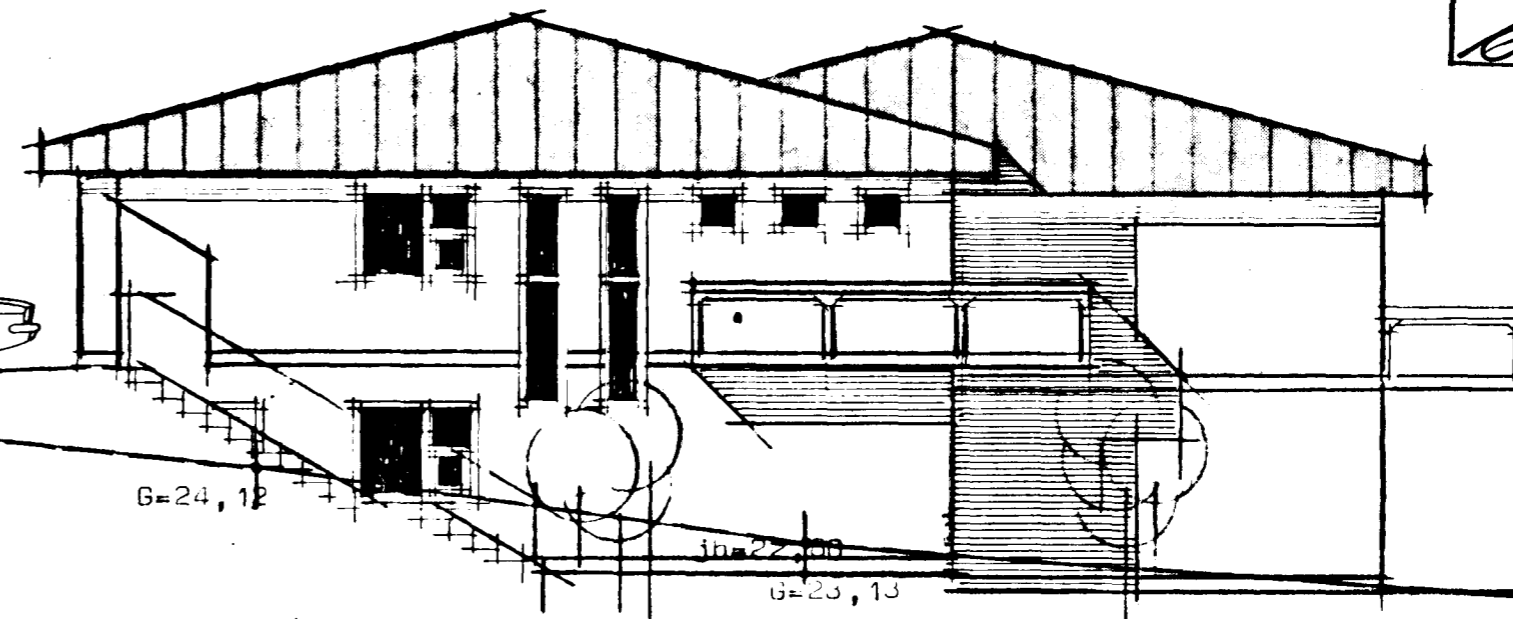
lóðamörk



G=25,12



G=24,12



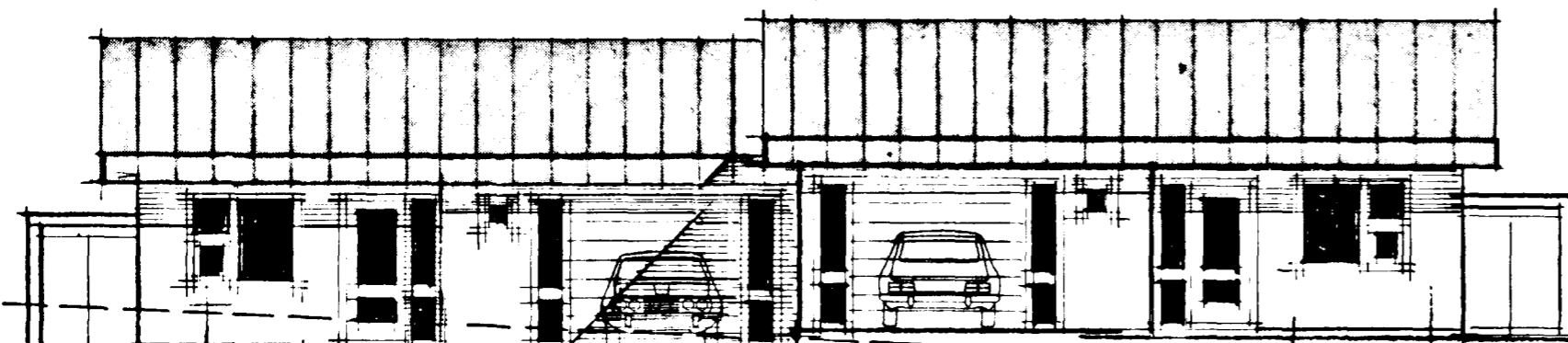
jh=22,50

G=23,13

Hallal í 160am.

Norð-vestur

G=26,14

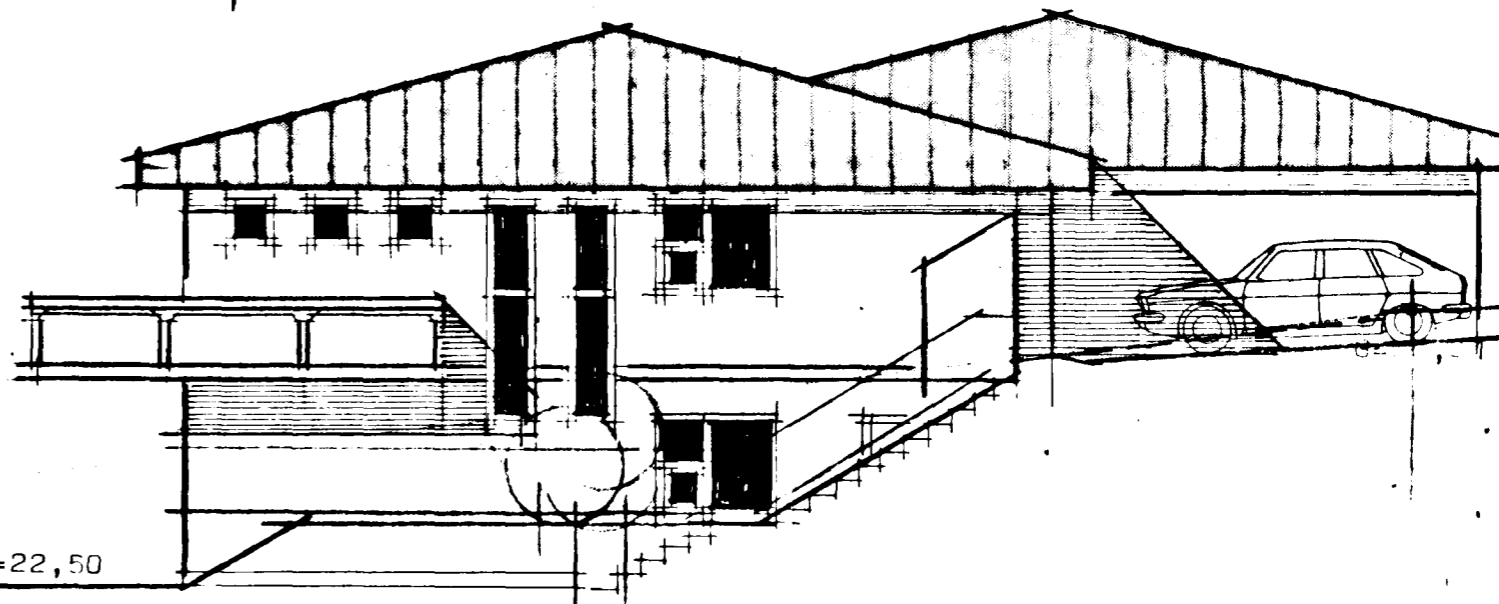


G=25,67

G=25,12

G=24,12

Norð-austur



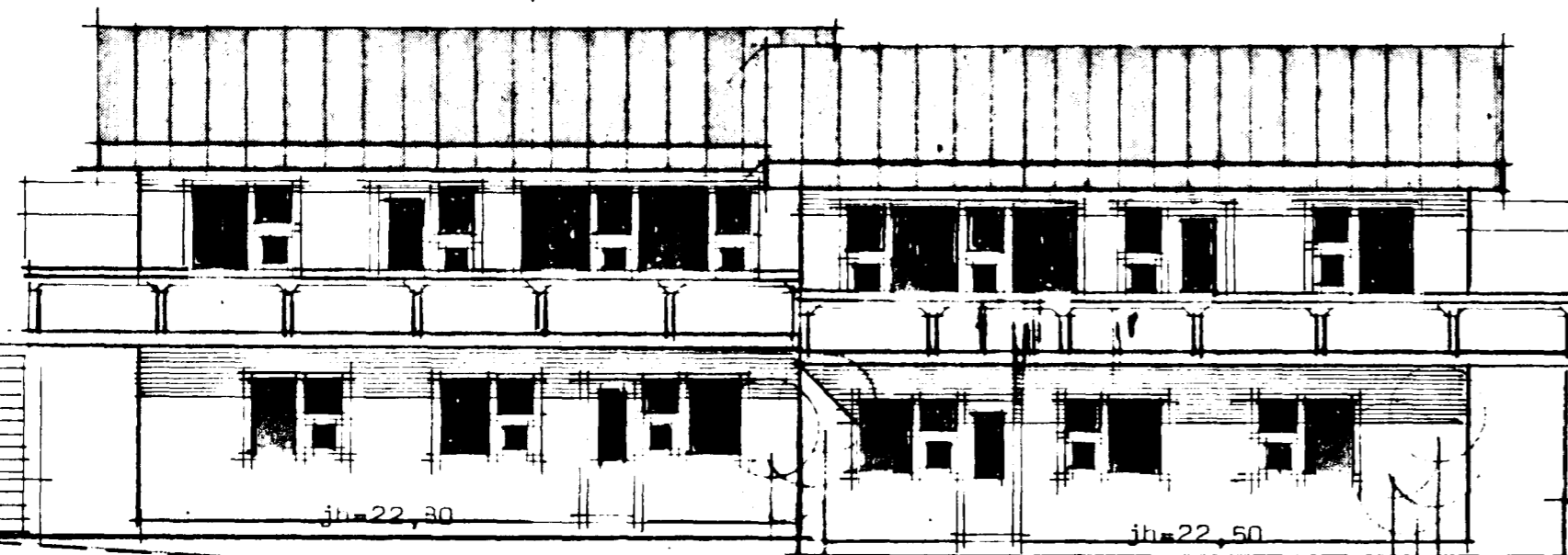
G=25,43

lóðamörk

jh=22,50

G=21,77

Suð-austur



jh=22,30

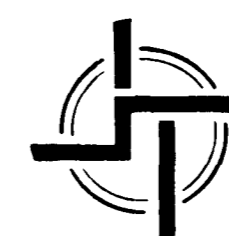
jh=22,50

Hallal í 160am.

G=21,91

G=21,77

Suð-vestur



**STADALHÚS**

TEIKNISTOFA SÍÐUMÚLA 3I SÍMI 8314I

VERKEFNI	DAGS. júlí 1988	VERK NR
Útlitsmyndir	MKV. 1:100	88-10
Traðarberg 25-27 Hafnarfirði	BR.	
	BLAD NR 1.03	

*Sigurður Guðmundsson* *Sigurður P. Kristjánsson*  
 SIGURÐUR GUÐMUNDSSON SIGURÐUR P KRISTJÁNSSON FTFI