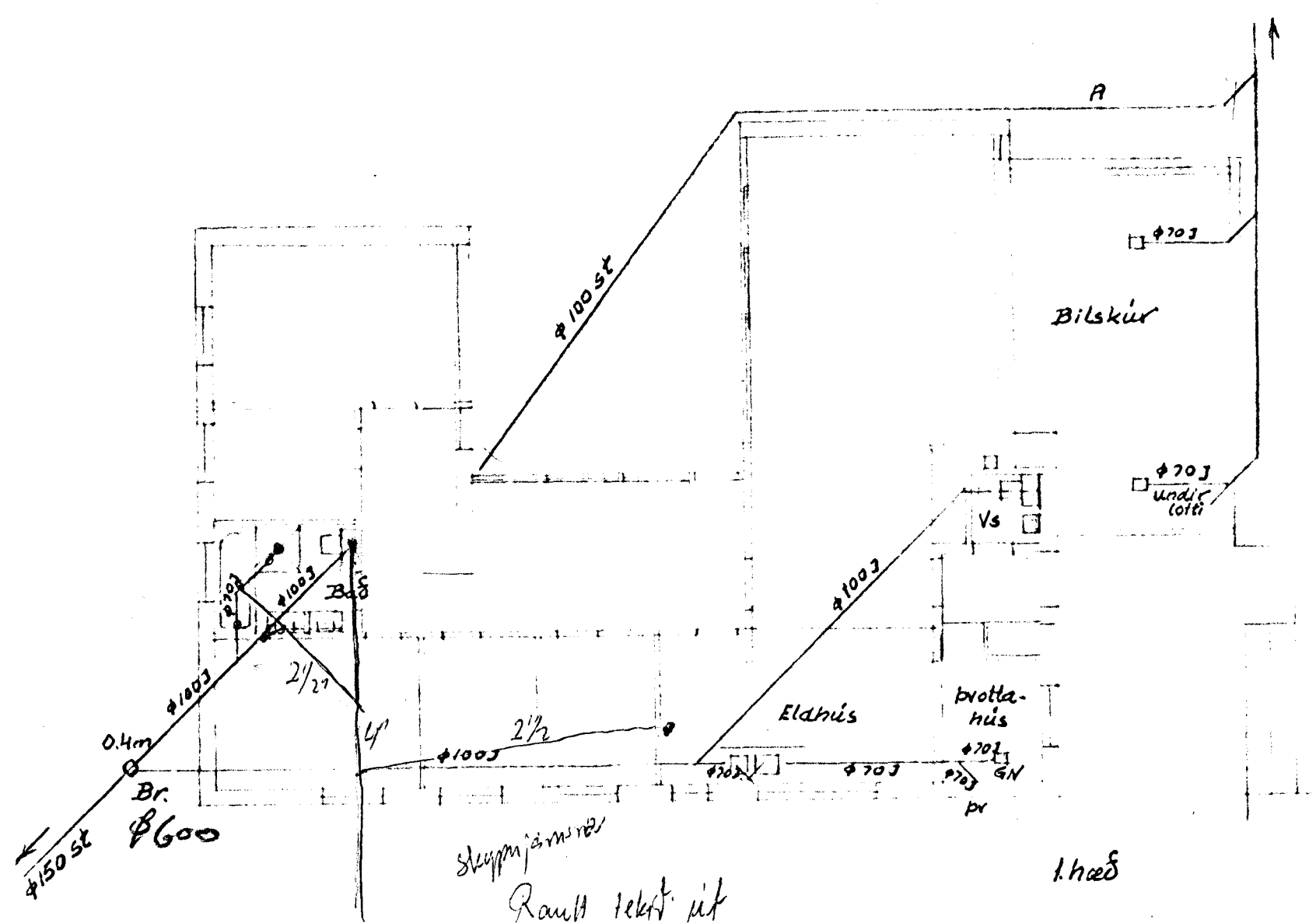
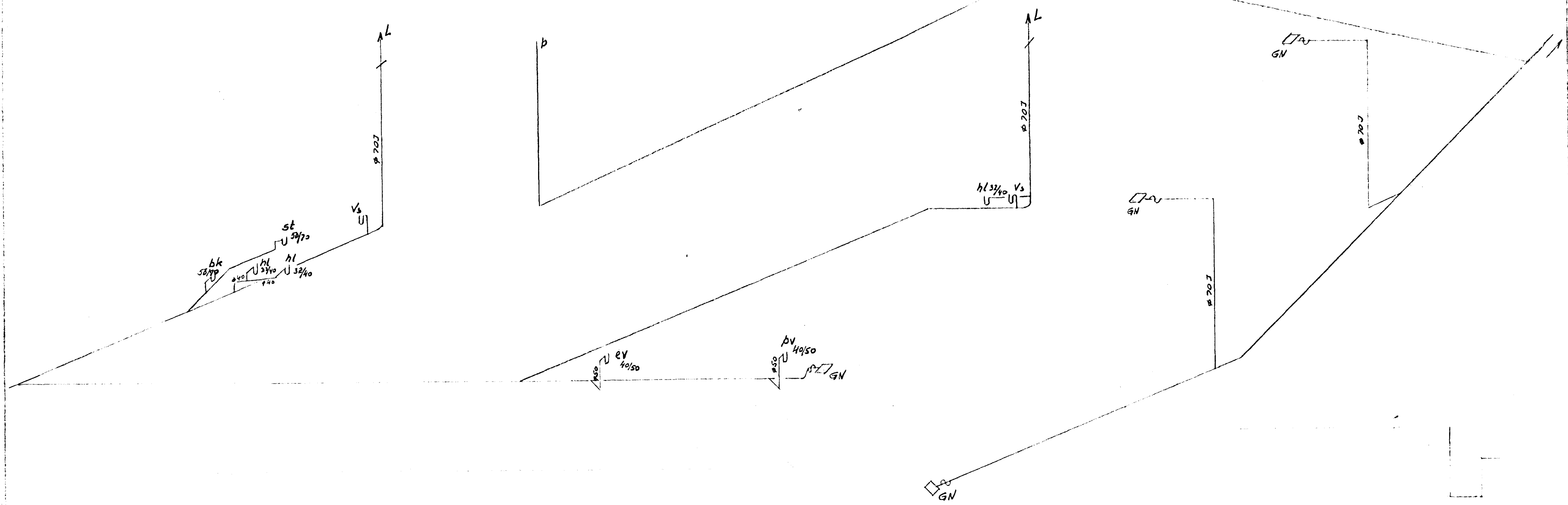
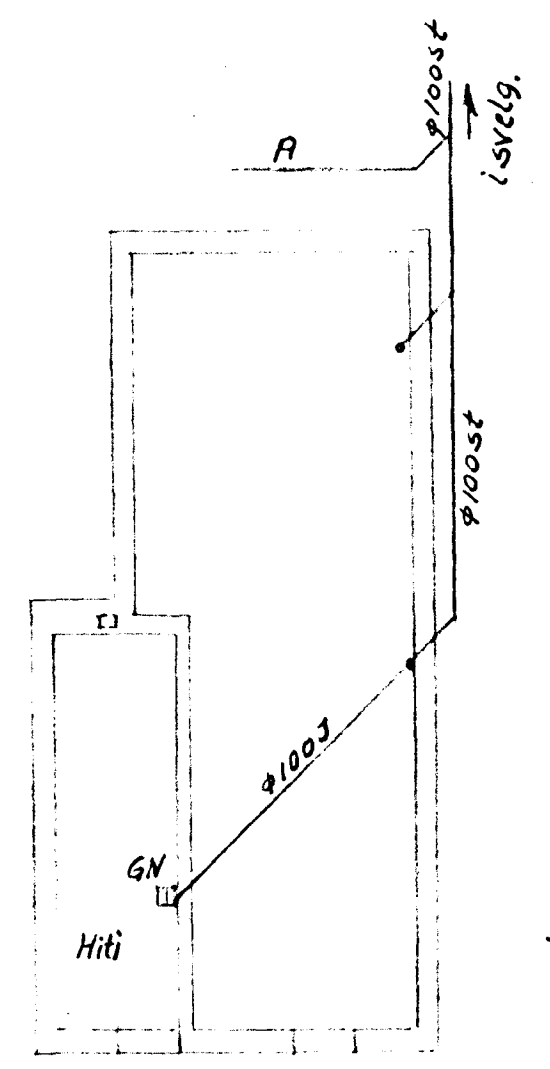


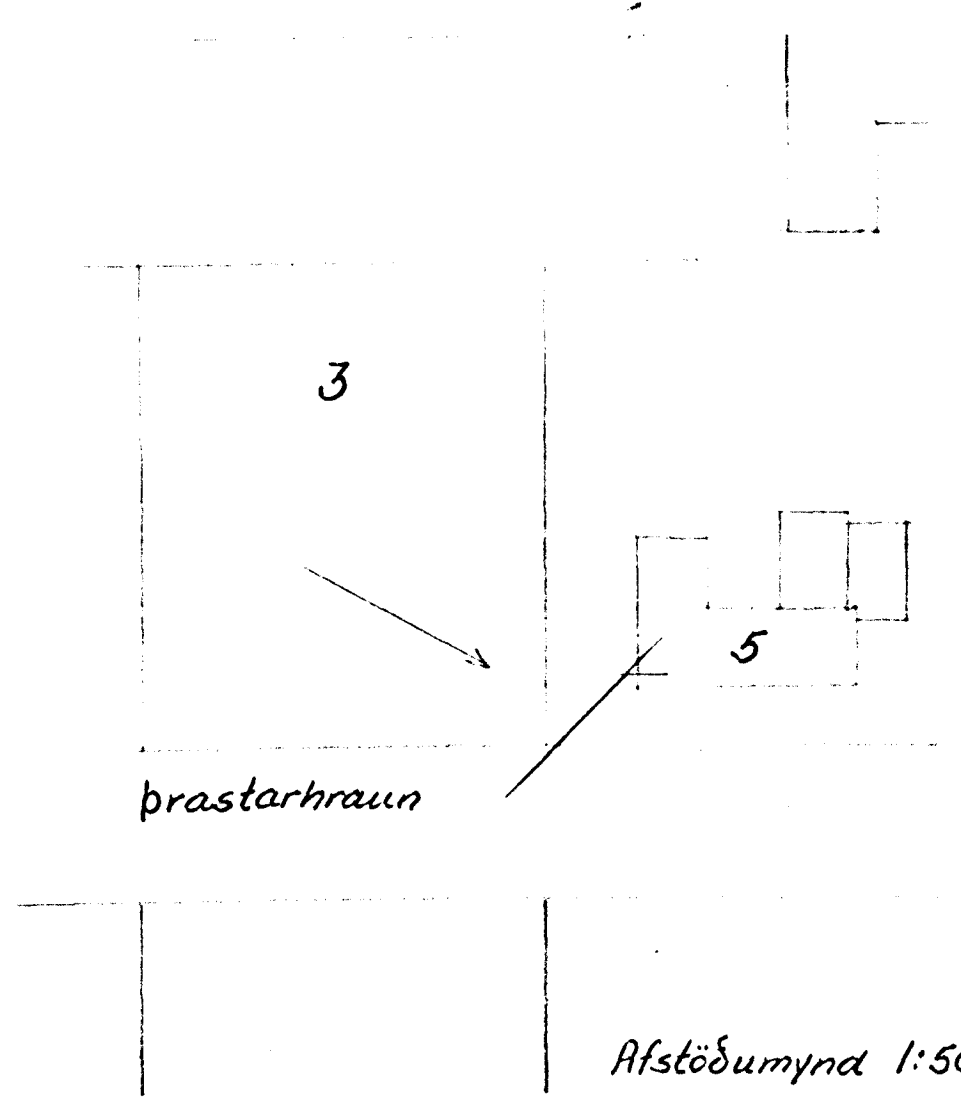
Byggingafrádráttir
í Hafnarfirði



Skoppjárnvegur
Rauhlíktítt
16/7 '64 I.br



kjallari



prastahraun

Afstöðumynd 1:500

Ettri og frágangur lagna
sé í samræmi holræsareglugerð

prastahraun 5 Hafnf.	M.~ 1:50 1:100	Teikn. 29/10-'63
Holræsi	12-37-1	Lín. Agnar Lóega