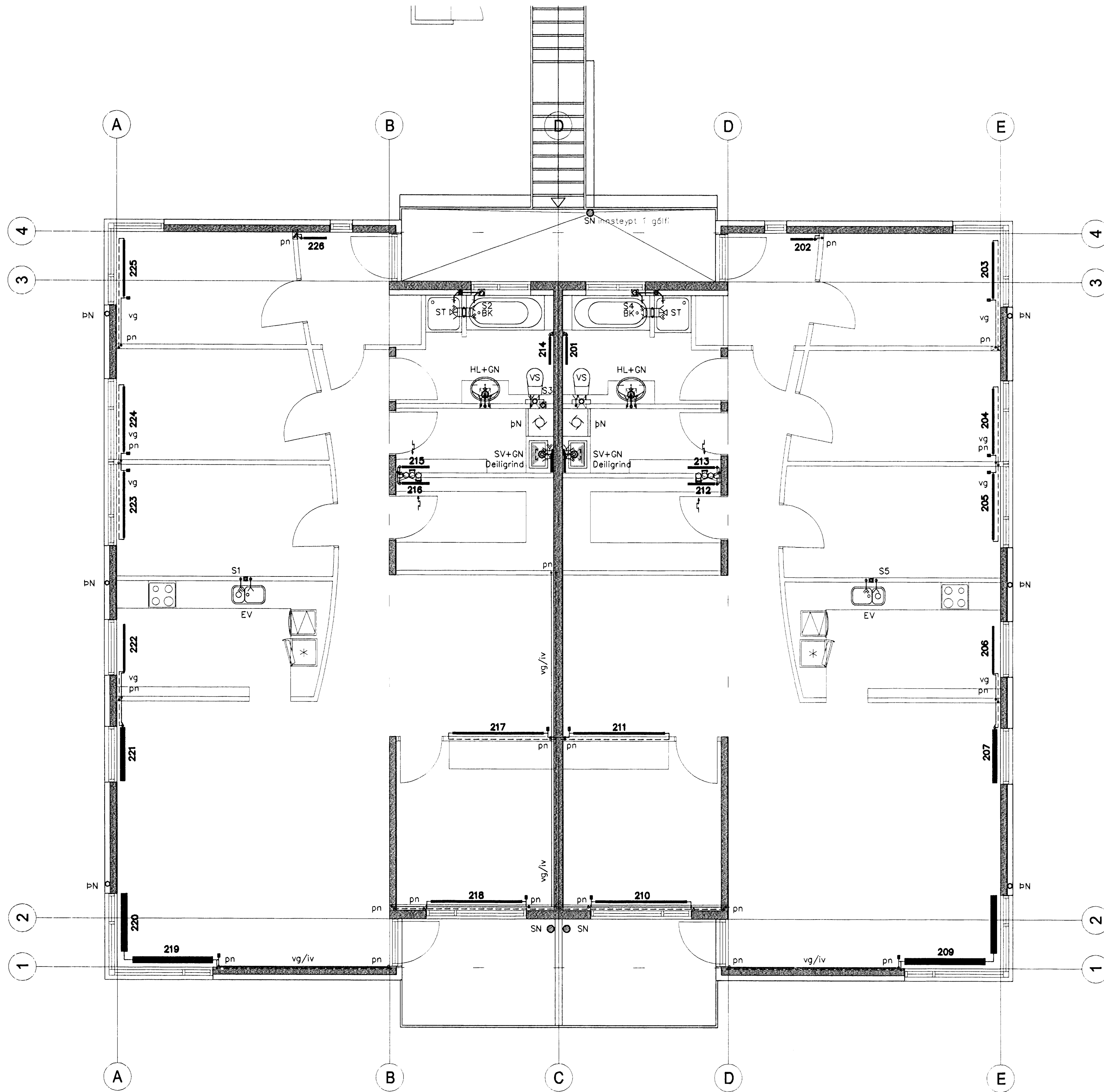


GRUNNMYND 2.HÆÐ OG LOFT 1:50

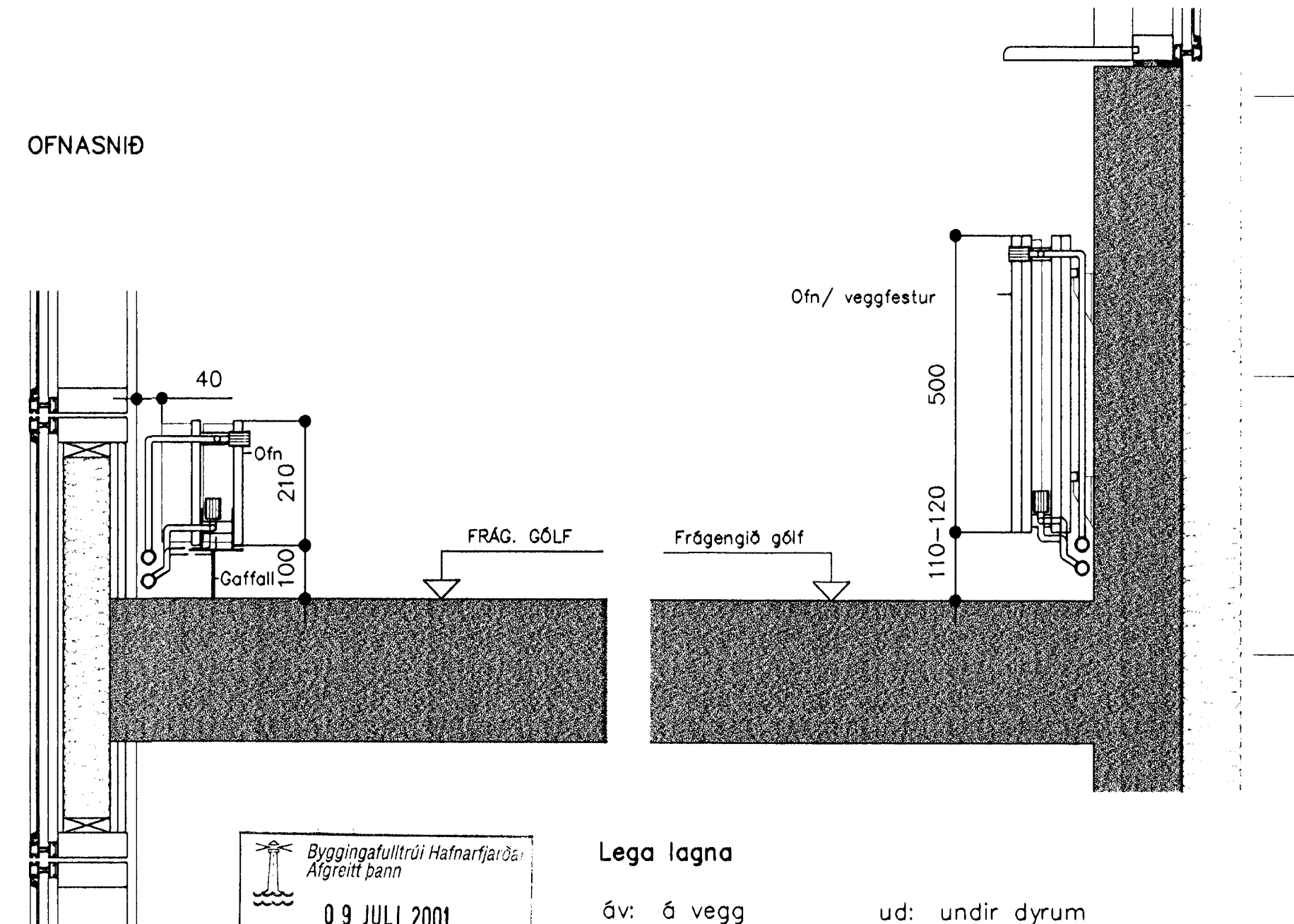


OFNASKRÁ

Önar skulu vera vottaðir af Rannsóknarstofnun Byggingaráæðarinnar samkvæmt IST EN-442  
Ofnlokar= Helmeler - Önar delta-t=40°C - Önatengi = 10mm

| númer                 | rými                | wött/klst | ofnategund                      | festing | stútar        | ofnloki            | tala        | stíll-<br>fjöldi |
|-----------------------|---------------------|-----------|---------------------------------|---------|---------------|--------------------|-------------|------------------|
| 201                   | Bað                 | 729       | P22-500/600                     | Veggf.  | A+B+C+D       | RTL                | -           | 1                |
| 202                   | Anddyri             | 607       | P22-500/500                     | Veggf.  | A+B+C+D       | RTL                | -           | 1                |
| 203                   | Herbergi 1          | 1458      | P22-500/1200                    | Veggf.  | A+B+C+D       | F-exakt            | 4,0         | 1                |
| 204                   | Herbergi 2          | 1260      | P21-500/1400                    | Veggf.  | A+B+C+D       | F-exakt            | 4,0         | 1                |
| 205                   | Herbergi 3          | 1260      | P21-500/1400                    | Veggf.  | A+B+C+D       | F-exakt            | 4,0         | 1                |
| 206                   | Eldhús              | 900       | P21-500/1000                    | Veggf.  | A+B+C+D       | RTL                | -           | 1                |
| 207                   | Stofa               | 1097      | VK+C+V-210/1150                 | Gólf.   | A+B           | RTL                | -           | 1                |
| 208                   | Stofa               | 1145      | VK+C+V-210/1200                 | Gólf.   | C+D           | -                  | -           | 1                |
| 209                   | Stofa               | 1622      | VK+C+V-210/1700                 | Gólf.   | A+B+C+D       | F-exakt            | 4,0         | 1                |
| 210                   | Herbergi 4          | 1263      | P11-500/2000                    | Veggf.  | A+B+C+D       | F-exakt            | 4,0         | 1                |
| 211                   | Fjóskeyduherbergi   | 1263      | P11-500/2000                    | Veggf.  | A+B+C+D       | F-exakt            | 4,0         | 1                |
| 212                   | Geymsla             | 379       | P11-500/600                     | Veggf.  | A+B+C+D       | RTL                | -           | 1                |
| 213                   | Þvottur             | 379       | P11-500/600                     | Veggf.  | A+B+C+D       | RTL                | -           | 1                |
| 214                   | Bað 2               | 729       | P22-500/600                     | Veggf.  | A+B+C+D       | RTL                | -           | 1                |
| 215                   | Þvottur 2           | 379       | P11-500/600                     | Veggf.  | A+B+C+D       | RTL                | -           | 1                |
| 216                   | Geymsla 2           | 379       | P11-500/600                     | Veggf.  | A+B+C+D       | RTL                | -           | 1                |
| 217                   | Fjóskeyduherbergi 2 | 1263      | P11-500/2000                    | Veggf.  | A+B+C+D       | F-exakt            | 4,0         | 1                |
| 218                   | Herbergi 5          | 1263      | P11-500/2000                    | Veggf.  | A+B+C+D       | F-exakt            | 4,0         | 1                |
| 219                   | Stofa 2             | 1622      | VK+C+V-210/1700                 | Gólf.   | A+B+C+D       | F-exakt            | 4,0         | 1                |
| 220                   | Stofa 2             | 1145      | VK+C+V-210/1200                 | Gólf.   | A+B           | -                  | -           | 1                |
| 221                   | Stofa 2             | 1097      | VK+C+V-210/1150                 | Gólf.   | C+D           | RTL                | -           | 1                |
| 222                   | Eldhús              | 900       | P21-500/1000                    | Veggf.  | A+B+C+D       | RTL                | -           | 1                |
| 223                   | Herbergi 6          | 1260      | P21-500/1400                    | Veggf.  | A+B+C+D       | F-exakt            | 4,0         | 1                |
| 224                   | Herbergi 7          | 1260      | P21-500/1400                    | Veggf.  | A+B+C+D       | F-exakt            | 4,0         | 1                |
| 225                   | Herbergi 8          | 1458      | P22-500/1200                    | Veggf.  | A+B+C+D       | F-exakt            | 4,0         | 1                |
| 226                   | Anddyri 2           | 607       | P22-500/500                     | Veggf.  | A+B+C+D       | RTL                | -           | 1                |
| <b>Samtals</b>        |                     |           | <b>Orkugjafi alla wött/klst</b> |         | <b>26,724</b> | <b>Fjöldi ofna</b> | <b>alls</b> | <b>26</b>        |
| <b>Ofnlokar alls:</b> |                     |           | <b>Á framrás</b>                |         | <b>12</b>     | <b>Á bakrás</b>    |             | <b>12</b>        |

OFNASNIÐ

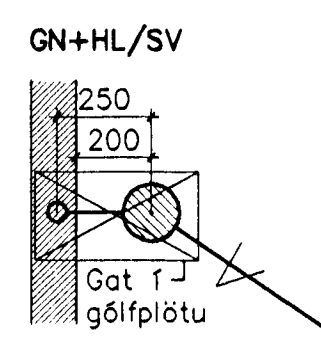


Byggingafræðingur  
Alfreitur Þórný  
09 JULI 2001  
V.C.

**Legna lagna**  
 óv: á vegg  
 úv: undir lofti  
 íg: í gólfrauf  
 ív: í vegggrauf  
 pn: pípa fer niður  
 pu: pípa fer upp  
 ud: undir dyrum  
 ul: undir lofti  
 vg: við gólf  
 vl: við loft  
 yd: yfir dyrum  
 yg: yfir glugga

BATTERIÐ

VERTI  
MOTT.  
SÍÐAR  
5.7.2001



Rúmmyndir og teksti: sjá teikningu PR01

| Breytingar |       |      | ÞRÁSTARÁS 12 HF.                        |                |
|------------|-------|------|---|----------------|
| Nr.        | Dags. | Nafn |   |                |
|            |       |      | Verkfæðistofa Þránn & Benedikt          |                |
|            |       |      | Laugavegi 178, 105 Rvk                  |                |
|            |       |      | Sími: 553 1770, 568 7775, Fax: 568-7701 |                |
|            |       |      | Netfang: post@islandia.is               |                |
|            |       |      | Lagnir inni                             | HBS   T.BD   S |
|            |       |      |   | M 1:50         |
|            |       |      |   | Nr. P201       |
|            |       |      |   | Dags. Júl 01   |
|            |       |      |   | 08012-3609     |