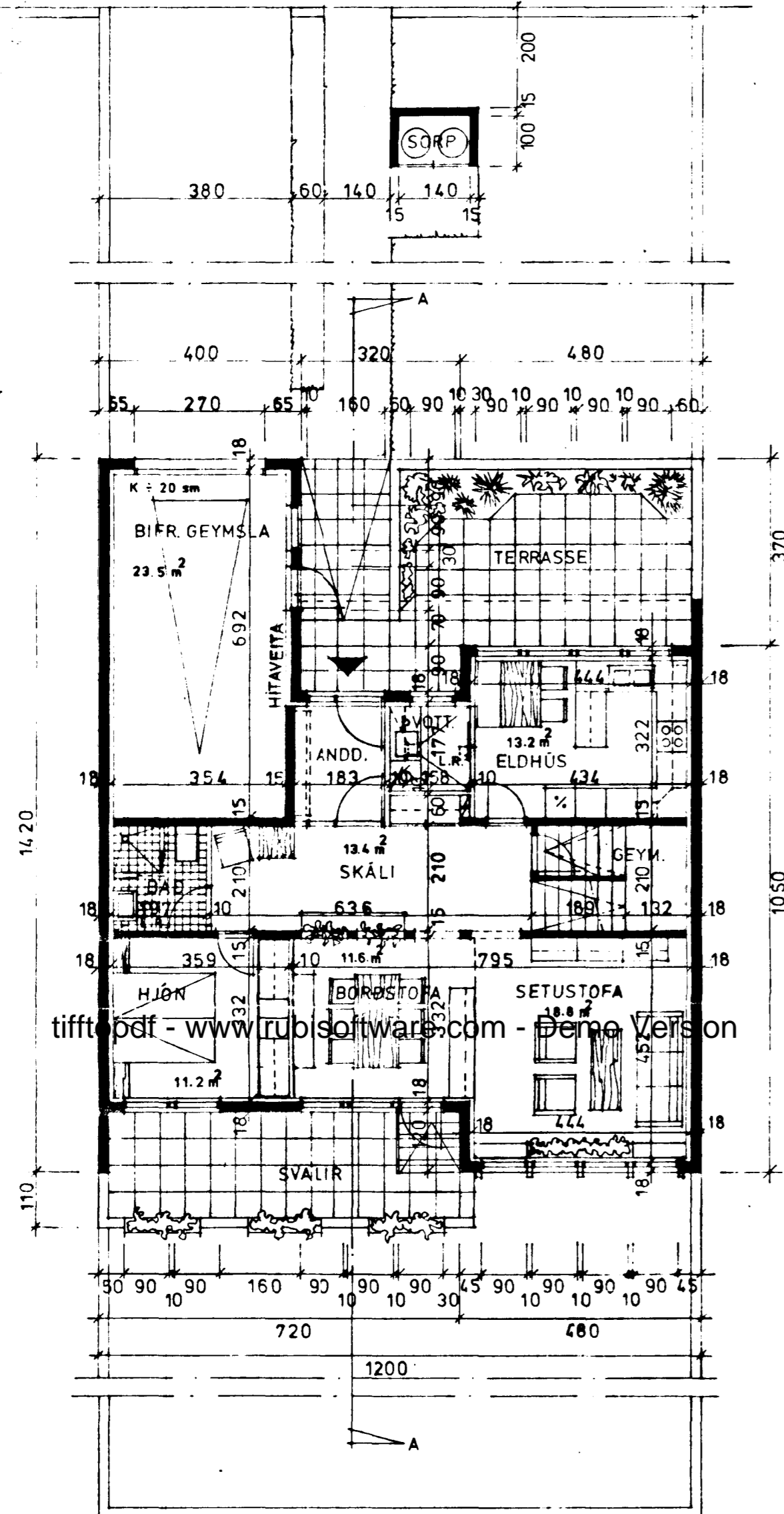


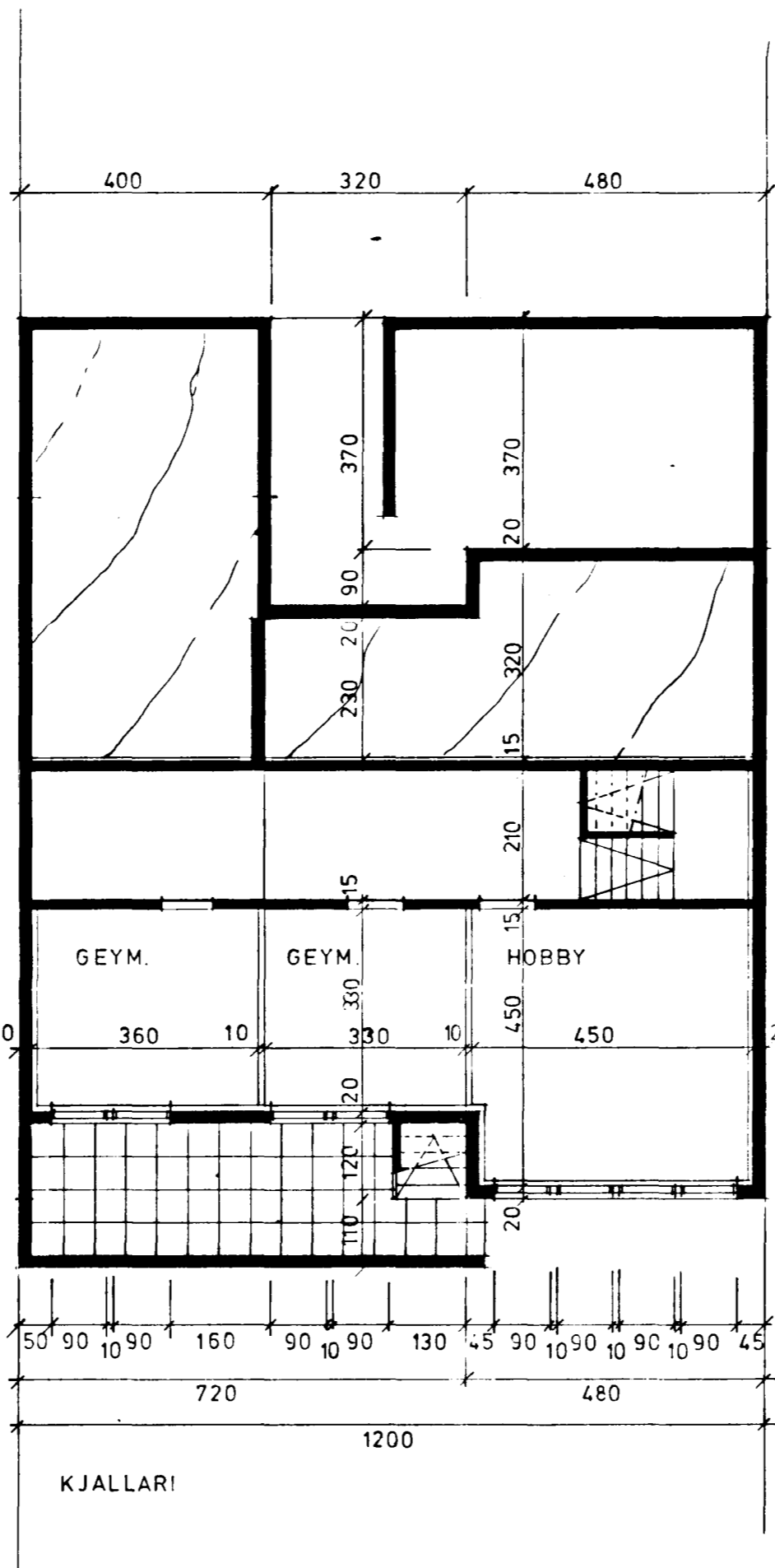
Ganga skal frá önnu  
eldstæði í samráði við  
stjórnvaldsstjóra



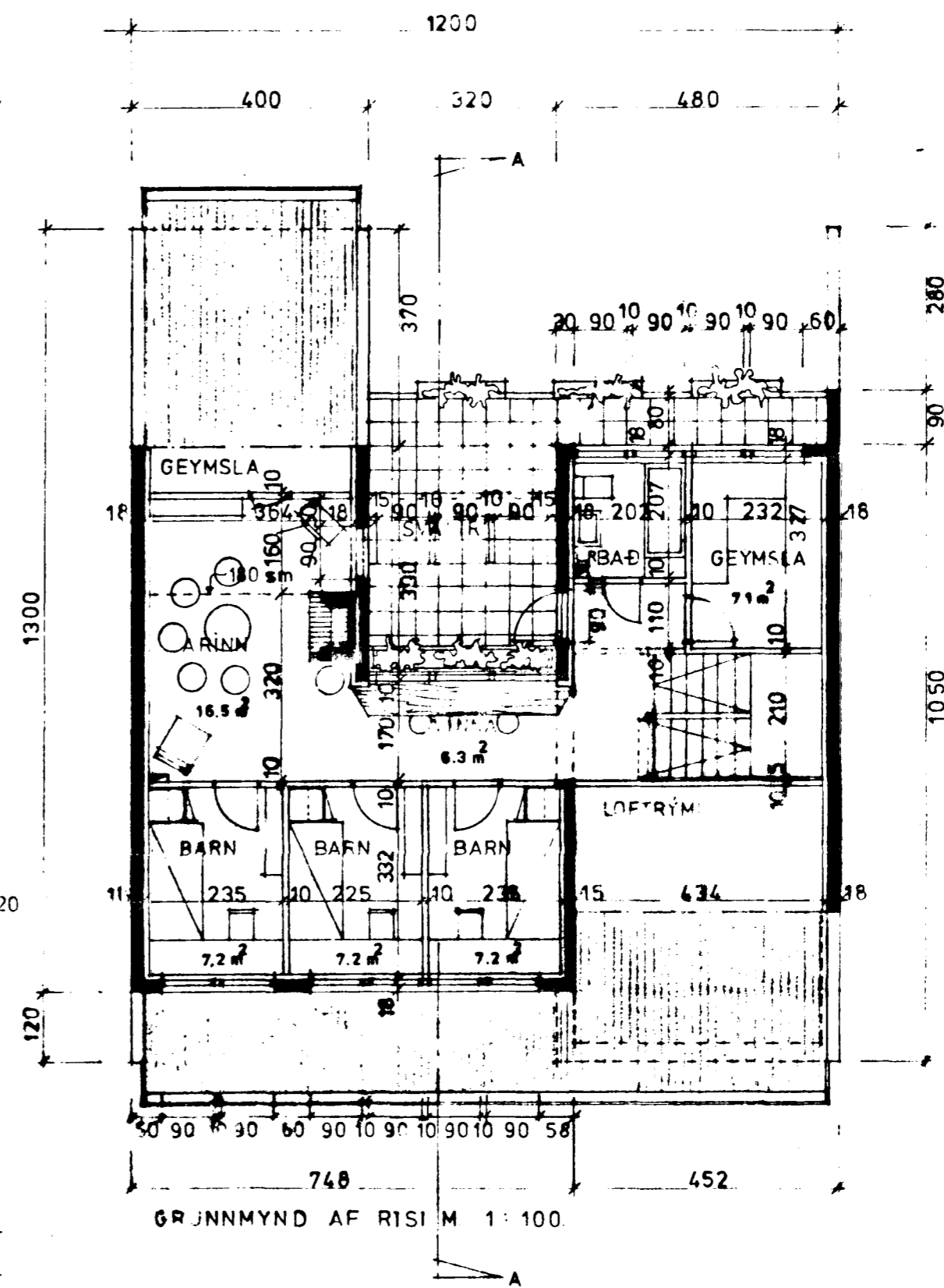
GRUNNMYND HÆÐAR M. 1:100.

KÖLNUNARTÖLUR SÉU  
SAMKV. ISL. ST. 66.

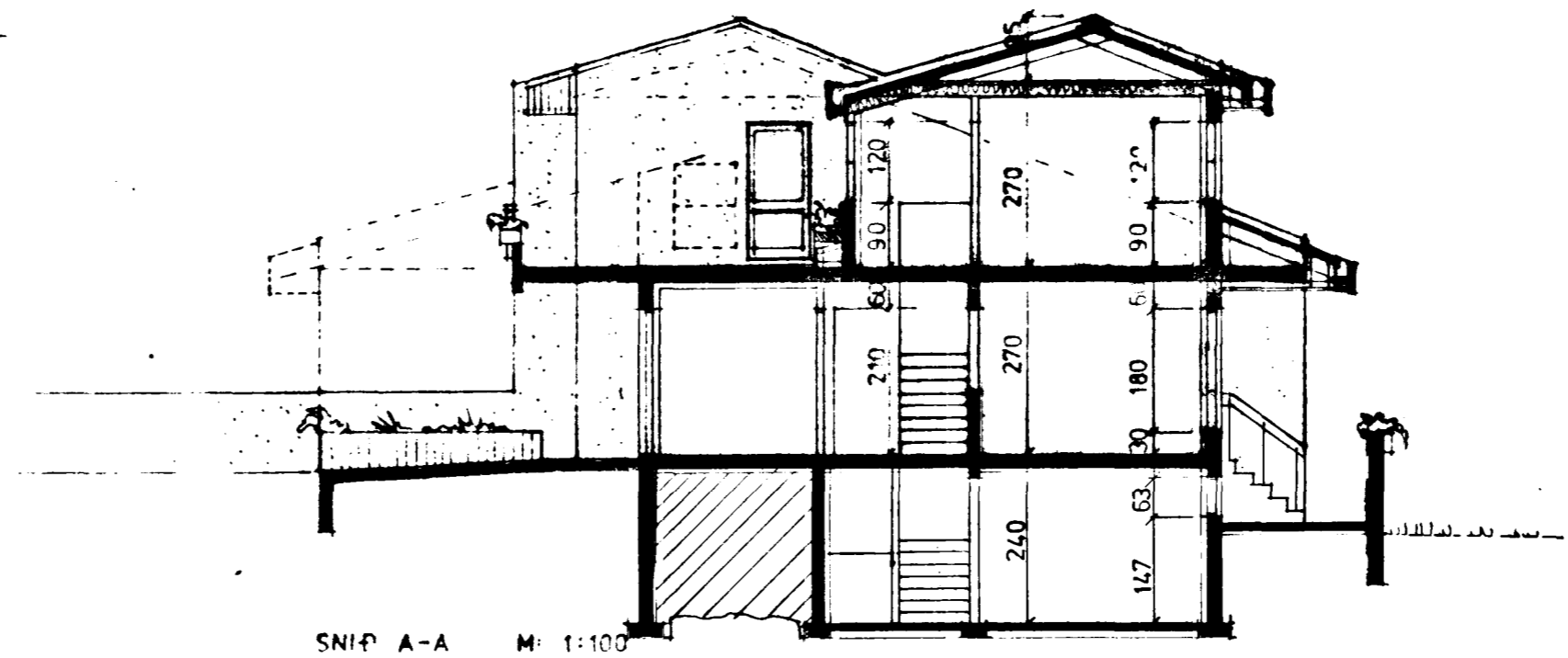
BRUTTÓ:	NETTÓ:
KJALLARI: 76.5 m <sup>2</sup>	1. HÆÐ: 82.0 m <sup>2</sup>
1. HÆÐ: 101. m <sup>2</sup>	RIS: 55.6 m <sup>2</sup>
RIS: 97.5 m <sup>2</sup>	137.6 m <sup>2</sup>
BÍFRG: 28.3 m <sup>2</sup>	
RÚMMÁL: 625.4 m <sup>3</sup> + KJ. 179.0 m <sup>3</sup> = 804.4 m <sup>3</sup>	



KJALLARI



GRUNNMYND AF RISI M. 1:100.



SNIP A-A M. 1:100

31-7-1980  
BREYTT: 8-11-1979  
OKT 1979

*Óli Þórðarson*