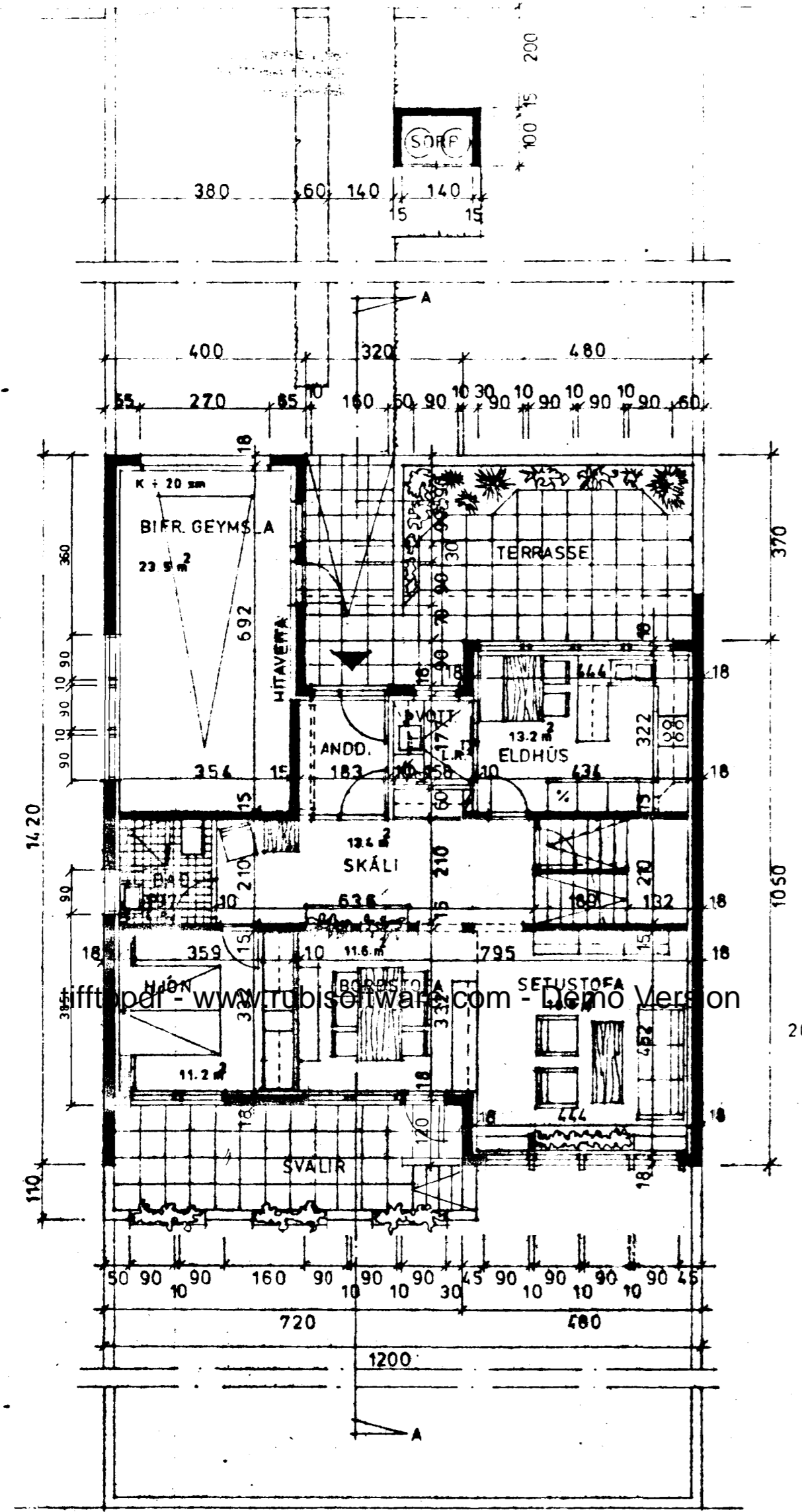


Samþykkt á fundi bygginga-  
nefndar þ. 20. 8. 1980  
BYGGINGAFULLTRÚINN  
Í HAFNARFIRÐI

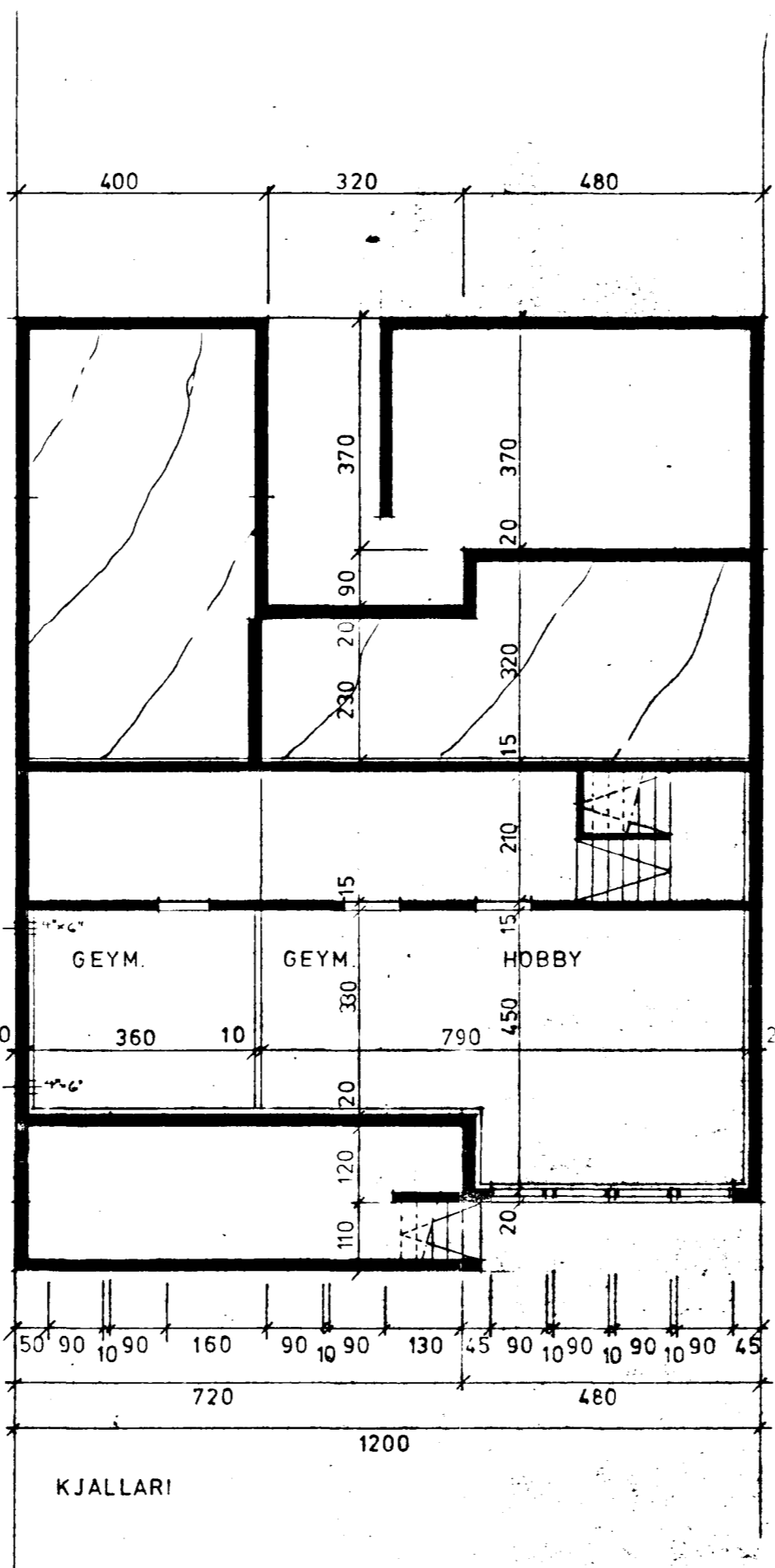
Gæma skal frá önnu  
eldstæði í samráði við  
slökkviliðsfora



GRUNNMYND HÆÐAR M. 1:100.

KÖLNUNARTÖLUR SÉU  
SAMKV. ISL. ST. 66.

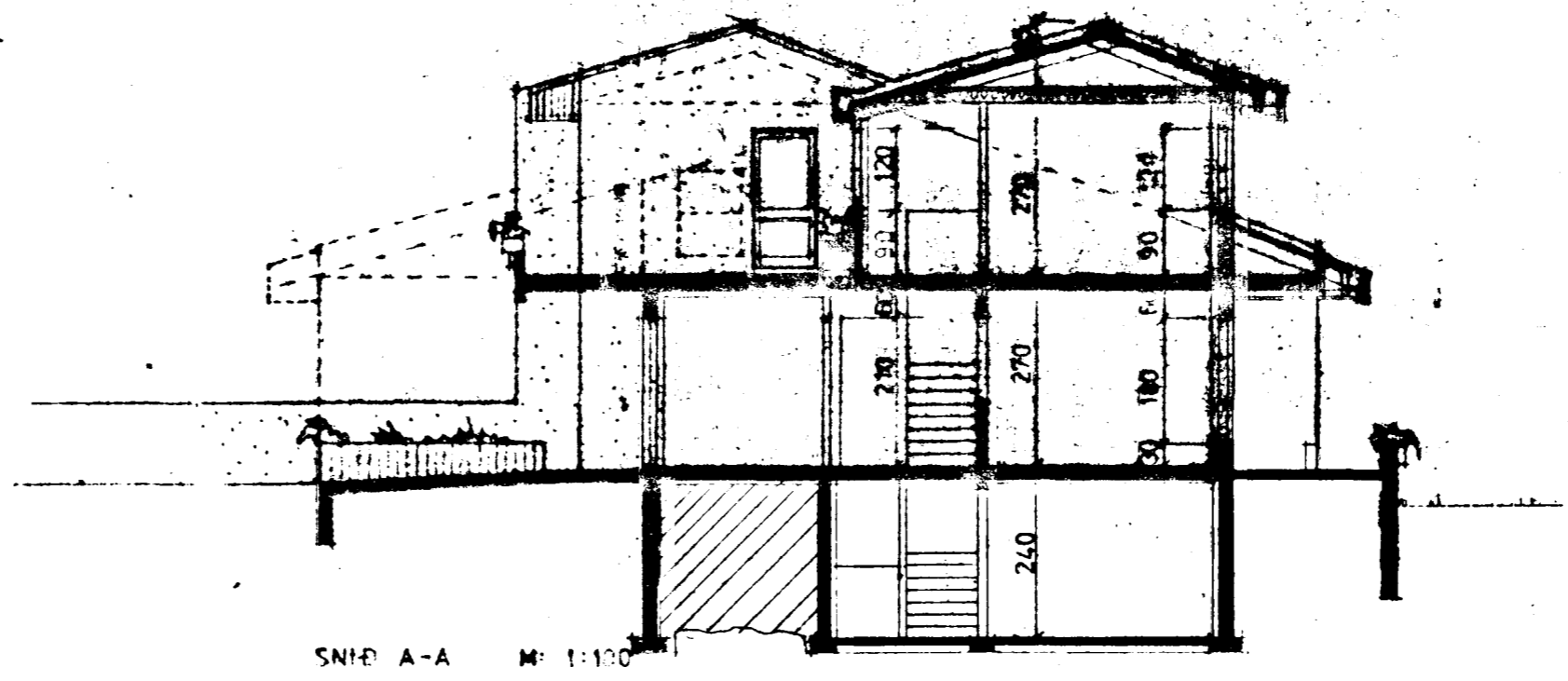
BRUTTÓ:	NETTÓ:
KJALLARI: 76.5 m <sup>2</sup>	1. HÆÐ: 82.0 m <sup>2</sup>
1. HÆÐ: 101. m <sup>2</sup>	RIS: 55.6 m <sup>2</sup>
RIS: 97.5 m <sup>2</sup>	137.6 m <sup>2</sup>
BIFRG: 28.3 m <sup>2</sup>	
RÜMMÁL: 625.4 m <sup>3</sup> + KJ. 179.0 m <sup>3</sup> = 804.4 m <sup>3</sup>	



KJALLARI



GRUNNMYND AF RISI M. 1:100



SNID A-A M: 1:100

31-7-1980  
RÆTT: 6-11-1979  
OKT. 1979

*Óli Þórsson*